

## VTUA AD 2.1 AERODROME LOCATION INDICATOR AND NAME

## VTUA - BURIRAM / BURI RAM AIRPORT

## VTUA AD 2.2 AERODROME GEOGRAPHICAL AND ADMINISTRATIVE DATA

1	ARP coordinates and site at AD	151336.33N 1031504.46E
2	Direction and distance from (city)	30 KM from city
3	Elevation/Reference temperature	594 FT / 28°C
4	Geoid Undulation at AD ELEV PSN	-89 FT
5	MAG VAR/Annual change	1°01' W (2022) / 0°05' W
6	AD Administration, address, telephone, telefax, telex, AFS	Director of Buri Ram Airport Buri Ram Airport 143 Moo 12, Tambon Ronthong, Amphoe Satuk, Buri Ram Province 31150 Thailand Tel: +664 466 6341 Fax: +664 466 6340 AFS: VTUOYDYX
7	Types of traffic permitted (IFR/VFR)	IFR/VFR
8	Remarks	Operator: Department of Airports

## VTUA AD 2.3 OPERATIONAL HOURS

1	Aerodrome Operator	2300-1300
2	Customs and immigration	On request
3	Health and sanitation	On request
4	AIS Briefing Office	NIL
5	ATS Reporting Office (ARO)	2300-1300
6	MET Briefing Office	NIL
7	ATS	2300-1300
8	Fuelling	NIL
9	Handling	NIL
10	Security	NIL
11	De-icing	NIL
12	Remarks	ATS Reporting Office (ARO): Located at Ubon Ratchathani Air Traffic Control Centre (1st floor of tower building) Tel: +664 525 6407, +668 9488 2157 Fax: +664 524 0798 Ext. 7874

## VTUA AD 2.4 HANDLING SERVICES AND FACILITIES

1	Cargo-handling facilities	NIL
2	Fuel/oil types	NIL
3	Fuelling facilities/capacity	NIL
4	De-icing facilities	NIL
5	Hangar space for visiting aircraft	NIL
6	Repair facilities for visiting aircraft	NIL

7	Remarks	NIL
---	---------	-----

**VTUA AD 2.5 PASSENGER FACILITIES**

1	Hotels	In the city
2	Restaurants	In the city
3	Transportation	Limousine and Car rental from the airport
4	Medical facilities	First aid at AD and hospital in the city
5	Bank and Post Office	In the city
6	Tourist Office	NIL
7	Remarks	NIL

**VTUA AD 2.6 RESCUE AND FIRE FIGHTING SERVICES**

1	AD category for fire fighting	Category 6
2	Rescue equipment	Yes
3	Capability for removal of disabled aircraft	NIL
4	Remarks	NIL

**VTUA AD 2.7 SEASONAL AVAILABILITY - CLEARING**

1	Types of clearing equipment	NIL
2	Clearance priorities	NIL
3	Remarks	The aerodrome is available all seasons.

**VTUA AD 2.8 APRONS, TAXIWAYS AND CHECK LOCATIONS/POSITIONS DATA**

1	Apron surface and strength	Surface: Concrete Strength: PCN 64/R/C/X/T
2	Taxiway width, surface and strength	Taxiway A Width: 23 M Surface: Asphaltic concrete Strength: PCN 59/F/C/X/T Taxiway B Width: 23 M Surface: Asphaltic concrete Strength: PCN 42/F/C/X/T
3	Altimeter checkpoint location and elevation	Location: At apron Elevation: 599 FT (182.46 M)
4	VOR checkpoints	NIL
5	INS checkpoints	NIL
6	Remarks	NIL

**VTUA AD 2.9 SURFACE MOVEMENT GUIDANCE AND CONTROL SYSTEM AND MARKINGS**

1	Use of aircraft stand ID signs, TWY guide lines and visual docking/parking guidance system of aircraft stands	Aircraft stand ID signs: Marked Taxiway guide lines: Yes Nose-wheel guide lines at apron VDGS of aircraft stands: NIL Aircraft parking shall follow marshaller strictly
---	---	---

2	RWY and TWY markings and LGT	RWY marking: RWY Designation, THR, TDZ, RCL, Aiming Point and Side Stripe RWY LGT: THR, RWY Edge and RWY End TWY markings: CL, Edge and RWY Holding Position TWY LGT: Taxiway Edge
3	Stop bars	NIL
4	Remarks	NIL

VTUA AD 2.10 AERODROME OBSTACLES

In approach/TKOF areas			In circling areas and at AD		Remarks
1			2		
RWY/Area affected	Obstacle type Elevation Markings/LGT	Coordinates	Obstacle type Elevation Markings/LGT	Coordinates	
a	b	c	a	b	
NIL	NIL	NIL	Apron Flood Light (1) HGT 210 M MSL LGTD	151336.30N 1031451.20E	NIL
			Apron Flood Light (2) HGT 210 M MSL LGTD	151337.90N 1031452.40E	
			Apron Flood Light (3) HGT 206 M MSL LGTD	151339.50N 1031453.50E	
			Apron Flood Light (4) HGT 206 M MSL LGTD	151341.10N 1031454.70E	
			Apron Flood Light (5) HGT 206 M MSL LGTD	151342.70N 1031455.80E	
			Apron Flood Light (6) HGT 208 M MSL LGTD	151344.40N 1031457.00E	
			Apron Flood Light (7) HGT 206 M MSL LGTD	151346.10N 1031458.20E	

VTUA AD 2.11 METEOROLOGICAL INFORMATION PROVIDED

1	Associated MET Office	Aeronautical Meteorological Station-Buri Ram, Lower Northeastern Meteorological Center, Thai Meteorological Department (TMD)
2	Hours of service MET Office outside hours	2200-1300 NIL
3	Office responsible for TAF preparation Periods of validity	Supply TAF from Lower Northeastern Meteorological Center 24 HR
4	Type of landing forecast Interval of issuance	TREND 1 HR
5	Briefing/consultation provided	Personal Consultation Tel: +669 8282 4412
6	Flight documentation Language(s) used	NIL
7	Charts and other information available for briefing or consultation	S, U85, Daily Weather Forecast, satellite and radar images

8	Supplementary equipment available for providing information	Automated Weather Observation System (AWOS)
9	ATS units provided with information	Buri Ram TWR
10	Additional information (limitation of service, etc.)	NIL

**VTUA AD 2.12 RUNWAY PHYSICAL CHARACTERISTICS**

Designations RWY NR	TRUE BRG	Dimensions of RWY(M)	Strength (PCN) and surface of RWY and SWY	THR coordinates RWY end coordinates THR geoid undulation	THR elevation and highest elevation of TDZ of precision APP RWY
1	2	3	4	5	6
04	035.10°	2100x45	PCN 59/F/C/X/T Asphaltic concrete	151318.37N 1031451.46E -89 FT	THR 594 FT
22	215.10°	2100x45	PCN 59/F/C/X/T Asphaltic concrete	151414.27N 1031531.92E -90 FT	THR 566 FT

Slope of RWY-SWY	SWY dimensions (M)	CWY dimensions (M)	Strip dimensions (M)	RESA dimensions (M)	Location and description of arresting system	OFZ	Remarks
7	8	9	10	11	12	13	14
1.5%	NIL	NIL	2220x300	430x90	NIL	NIL	NIL
1.5%	NIL	NIL	2220x300	630x90	NIL	NIL	NIL

**VTUA AD 2.13 DECLARED DISTANCES**

RWY Designator	TORA (M)	TODA (M)	ASDA (M)	LDA (M)	Remarks
1	2	3	4	5	6
04	2100	2100	2100	2100	NIL
22	2100	2100	2100	2100	NIL

**VTUA AD 2.14 APPROACH AND RUNWAY LIGHTING**

RWY Designator	APCH LGT type LEN INTST	THR LGT colour WBAR	VASIS (MEHT) PAPI	TDZ, LGT LEN	RWY Centre Line LGT Length, spacing, colour, INTST	RWY edge LGT LEN, spacing, colour INTST	RWY End LGT colour WBAR	SWY LGT LEN (M) colour	Remarks
1	2	3	4	5	6	7	8	9	10
04	SALS 420 M LIH	Green WBAR	PAPI LEFT 3° (50.67 FT)	NIL	NIL	2100 M 60 M White, FM 1500 M - 2100 M Yellow, 5 steps LIH	Red NIL	NIL	NIL
22	NIL	Green NIL	PAPI LEFT 3° (60.09 FT)	NIL	NIL	2100 M 60 M White, FM 1500 M - 2100 M Yellow, 5 steps LIH	Red NIL	NIL	RTIL

**VTUA AD 2.15 OTHER LIGHTING, SECONDARY POWER SUPPLY**

1	ABN/IBN location, characteristics and hours of operation	ABN: At tower building, FLG W G EV 3 SEC. IBN: NIL
2	LDI location and LGT Anemometer location and LGT	LDI: NIL Anemometer: NIL WDI: <ol style="list-style-type: none"> <li>1. Wind cone at 300 M from THR 04 off set right side 80 M from RCL, illuminated.</li> <li>2. Wind cone at 830 M from THR 04 off set left side 80 M from RCL, illuminated.</li> <li>3. Wind cone at 300 M from THR 22 off set left side 80 M from RCL, illuminated.</li> </ol>
3	TWY edge and centre line lighting	TWY edge: All TWY TWY centre line: NIL
4	Secondary power supply/switch-over time	Secondary power supply to all lighting at the Air Field Lighting (AFL) building. Switch-over time: 15 SEC.
5	Remarks	NIL

**VTUA AD 2.16 HELICOPTER LANDING AREA**

1	Coordinates TLOF or THR of FATO Geoid undulation	NIL
2	TLOF and/or FATO elevation M/FT	NIL
3	TLOF and FATO area dimensions, surface, strength, marking	NIL
4	True and MAG BRG of FATO	NIL
5	Declared distance available	NIL
6	APP and FATO lighting	NIL
7	Remarks	NIL

**VTUA AD 2.17 ATS AIRSPACE**

1	Designation and lateral limits	A circle of 5 NM Radius centred on BRM DVOR/DME (151422.43N1031531.59E)
2	Vertical limits	2000 FT/AGL
3	Airspace classification	C
4	ATS unit call sign Language(s)	Buri Ram Tower English, Thai
5	Transition altitude	11000 FT
6	Remarks	NIL

**VTUA AD 2.18 ATS COMMUNICATION FACILITIES**

Service designation	Call sign	Frequency	Hours of operation	Remarks
1	2	3	4	5
APP	Buri Ram Approach	125.55 MHZ 121.5 MHZ <sup>1)</sup>	As AD OPR HR	<sup>1)</sup> Emergency frequency
TWR	Buri Ram Tower	118.05 MHZ 236.6 MHZ 121.5 MHZ <sup>1)</sup>	As AD OPR HR	
ATIS	Buri Ram Airport	127.05 MHZ	As AD OPR HR	

**VTUA AD 2.19 RADIO NAVIGATION AND LANDING AIDS**

Type of aid, MAG VAR, CAT of ILS/MLS (For VOR/ILS/MLS, give declination)	ID	Frequency	Hours of operation	Position of transmitting antenna coordinates	Elevation of DME transmitting antenna	Remarks
1	2	3	4	5	6	7
NDB	BR	303 KHZ	H24	151419.18N 1031509.15E		Coverage 50 NM clockwise orbit data refer from commissioning checked as follows: – Bearing 001°-360° at altitude 1 700 FT
DVOR/DME	BRM	117.2 MHZ CH119X	H24	151422.43N 1031531.59E		DVOR/DME restriction due to mountainous terrain surround DVOR/DME station, coverage check does not provide adequate signal clockwise orbit 40 NM at required altitude in various areas as follows: – Radial 091°-140° altitude should not below 3 500 FT – Radial 141°-240° altitude should not below 5 000 FT – Radial 241°-280° altitude should not below 4 000 FT – Radial 281°-090° altitude should not below 2 500 FT
LOC RWY04 ILS CAT I	IBRM	109.3 MHZ	H24	151427.29N 1031541.27E		LOC: Designated operation coverage 18 NM, ALT 7000 FT AMSL.
GP		332 MHZ	H24	151327.74N 1031454.49E		GP: 3 DEG, RDH 50 FT
DME	IBRM	CH30X (109.3 MHZ)	H24	151429.12N 1031539.63E	543.43 FT	DME: Paired with LOC FREQ.

**VTUA AD 2.20 LOCAL AERODROME REGULATIONS**

All aircraft code letter C and higher are not allowed to turn on runway. The turn shall be made on the runway turn pad only. Any breach done by the aircraft operator shall be recorded and reported to The Civil Aviation Authority of Thailand/The Headquarter of that operator shall be liable for the compensation caused by such violation.

**VTUA AD 2.21 NOISE ABATEMENT PROCEDURES**

NIL

**VTUA AD 2.22 FLIGHT PROCEDURES**

**1. IFR DEPARTURES OTHER THAN VIA SID**

IFR departure procedures described below are determined for the purpose of case when an instrument departure via SID is impossible or undesirable.

**2. VISUAL DEPARTURES**

Visual departures during take-off and initial climb-out are permitted during the daytime and Visual Meteorological Conditions (VMC). ATC clearance to execute a visual departure may be issued upon request of the pilot or upon initiative of the ATC and accepted by the pilot.

To execute a visual departure

- meteorological conditions in the direction of take-off and the following climb-out shall enable visual reference to terrain up to Minimum Sector Altitude (MSA) or Minimum Flight Altitude (MFA) stated in ATC clearance,
- the pilot shall be responsible for obstacle clearance until such specified altitude,
- the pilot prior to take-off shall agree to execute this procedure,
- the ATC clearance shall be readback,

**3. OMNIDIRECTIONAL DEPARTURES**

Omnidirectional departures during take-off and initial climb-out are permitted during the day and night. ATC clearance to execute an omnidirectional departure may be issued upon request of the pilot or upon initiative of the ATC and accepted by the pilot.

To execute an omnidirectional departure:

- the pilot shall be maintaining a minimum climb gradient up to specific altitude as published shown as below,
- the pilot shall be responsible for adherence to such obtained ATC clearance,
- the pilot prior to take-off shall agree to execute this procedure,
- The ATC clearance shall be readback,

- Runway 04:

BURIRAM OMNI 04 Departure: Required climb gradient 201 ft per NM (3.3%) until 2,100 ft.

Ground speed	Knot	65	75	100	150	200	250	300
Rate of climb 3.3%	(ft/min)	217	251	334	501	668	835	1003

No turn before DER.

After departure climb straight ahead until 1,000 ft (or altitude assigned by ATC between 1,000 ft - 1,900 ft), then comply with ATC clearance issued (or as directed by ATC).

- Runway 22:

BURIRAM OMNI 22 Departure: Required climb gradient 201 ft per NM (3.3%) until 2,100 ft.

Ground speed	Knot	65	75	100	150	200	250	300
Rate of climb 3.3%	(ft/min)	217	251	334	501	668	835	1003

No turn before DER.

After departure climb straight ahead until 1,500 ft (or altitude assigned by ATC between 1,500 ft - 1,900 ft), then comply with ATC clearance issued (or as directed by ATC).

**VTUA AD 2.23 ADDITIONAL INFORMATION**

- Birds concentration on and in the vicinity of an aerodrome.

VTUA AD 2.24 CHARTS RELATED TO AN AERODROME

Chart name	Page
Aerodrome Chart - ICAO	AD 2-VTUA-2-1
Aircraft Parking/Docking Chart - ICAO	AD 2-VTUA-2-3
Aerodrome Ground Movement Chart - ICAO	AD 2-VTUA-2-5
Aerodrome Obstacle Chart - ICAO Type A - RWY 04/22	AD 2-VTUA-3-1
Instrument Approach Chart - ICAO - NDB RWY 04	AD 2-VTUA-8-1
Instrument Approach Chart - ICAO - VOR RWY 04	AD 2-VTUA-8-3
Instrument Approach Chart - ICAO - VOR RWY 04 (Fix and point list table)	AD 2-VTUA-8-4
Instrument Approach Chart - ICAO - VOR RWY 22	AD 2-VTUA-8-5
Instrument Approach Chart - ICAO - VOR RWY 22 (Fix and point list table)	AD 2-VTUA-8-6
Instrument Approach Chart - ICAO - ILS or LOC y RWY 04	AD 2-VTUA-8-7
Instrument Approach Chart - ICAO - ILS or LOC y RWY 04 (Fix and point list table)	AD 2-VTUA-8-8
Instrument Approach Chart - ICAO - ILS or LOC z RWY 04	AD 2-VTUA-8-9
Instrument Approach Chart - ICAO - ILS or LOC z RWY 04 (Tabular description)	AD 2-VTUA-8-10
Instrument Approach Chart - ICAO - ILS or LOC z RWY 04 (Fix and point list table)	AD 2-VTUA-8-11
Instrument Approach Chart - ICAO - ILS or LOC z RWY 04 (Waypoint list table)	AD 2-VTUA-8-12
Instrument Approach Chart - ICAO - RNP RWY 04	AD 2-VTUA-8-13
Instrument Approach Chart - ICAO - RNP RWY 04 (Tabular description)	AD 2-VTUA-8-14
Instrument Approach Chart - ICAO - RNP RWY 04 (Waypoint list table)	AD 2-VTUA-8-15
Instrument Approach Chart - ICAO - RNP RWY 22	AD 2-VTUA-8-17
Instrument Approach Chart - ICAO - RNP RWY 22 (Tabular description)	AD 2-VTUA-8-18
Instrument Approach Chart - ICAO - RNP RWY 22 (Waypoint list table)	AD 2-VTUA-8-19



**AERODROME CHART - ICAO**

**15 13 36.33N  
103 15 04.46E**

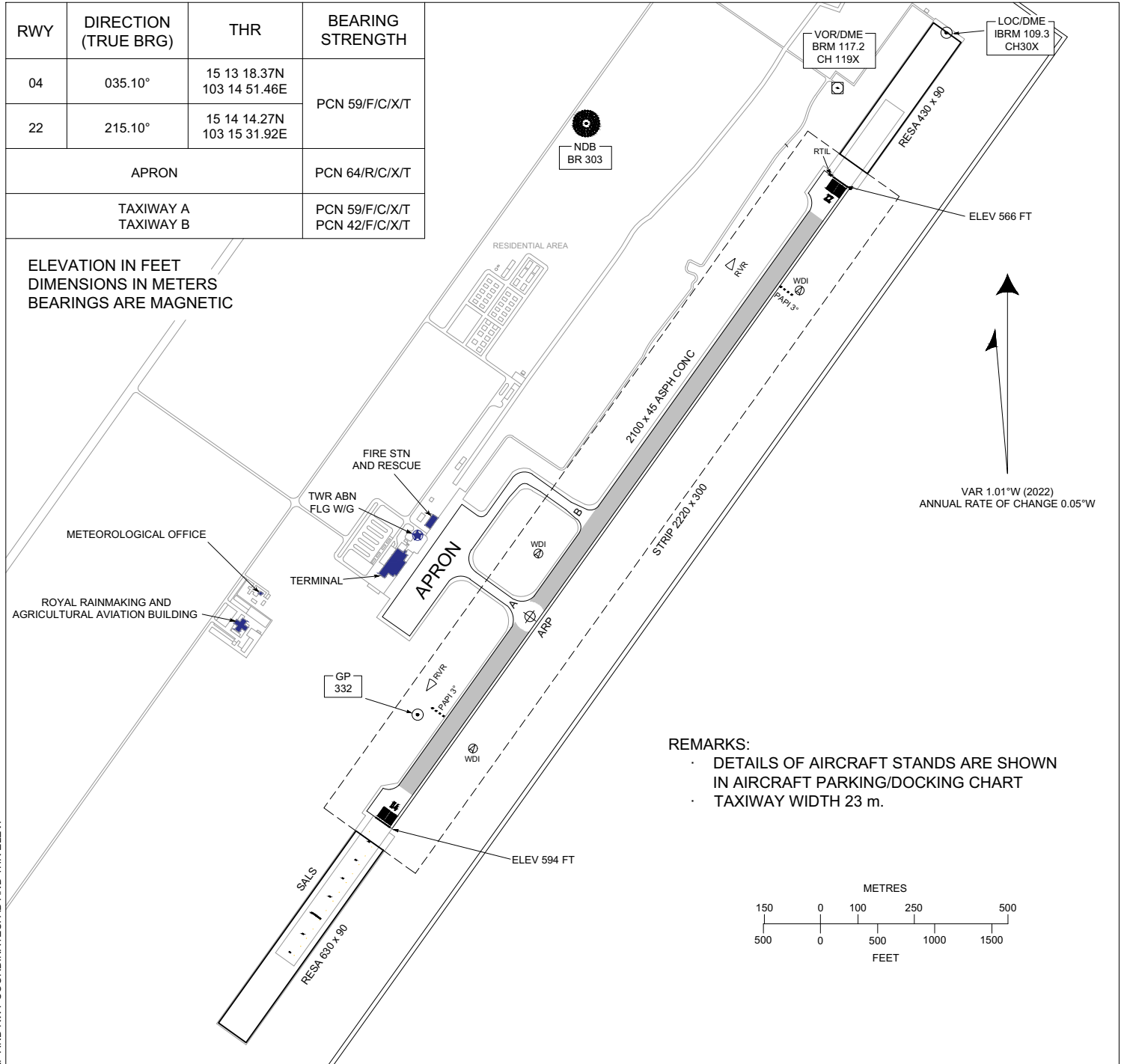
**ELEV 594 FT**

**TWR 118.05  
236.6**

**BURI RAM / Buri Ram**

RWY	DIRECTION (TRUE BRG)	THR	BEARING STRENGTH
04	035.10°	15 13 18.37N 103 14 51.46E	PCN 59/F/C/X/T
22	215.10°	15 14 14.27N 103 15 31.92E	
APRON			PCN 64/R/C/X/T
TAXIWAY A TAXIWAY B			PCN 59/F/C/X/T PCN 42/F/C/X/T

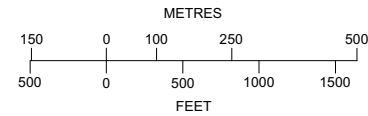
ELEVATION IN FEET  
DIMENSIONS IN METERS  
BEARINGS ARE MAGNETIC



VAR 1.01°W (2022)  
ANNUAL RATE OF CHANGE 0.05°W

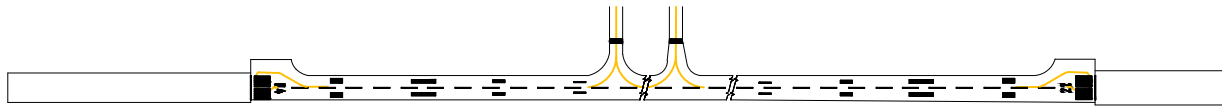
**REMARKS:**

- DETAILS OF AIRCRAFT STANDS ARE SHOWN IN AIRCRAFT PARKING/DOCKING CHART
- TAXIWAY WIDTH 23 m.

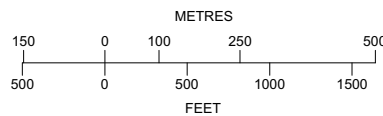
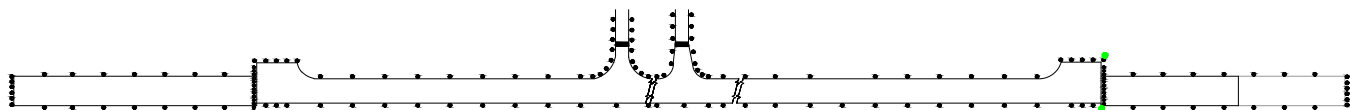


CHANGE: REVISED CHART. MAG VAR. ANNUAL RATE OF CHANGE. APR AND RWY COORDINATES. AD AND THR ELEV.

**MARKING AIDS RWY 04/22 AND EXIT TWY**



**LIGHTING AIDS RWY 04/22 AND EXIT TWY**



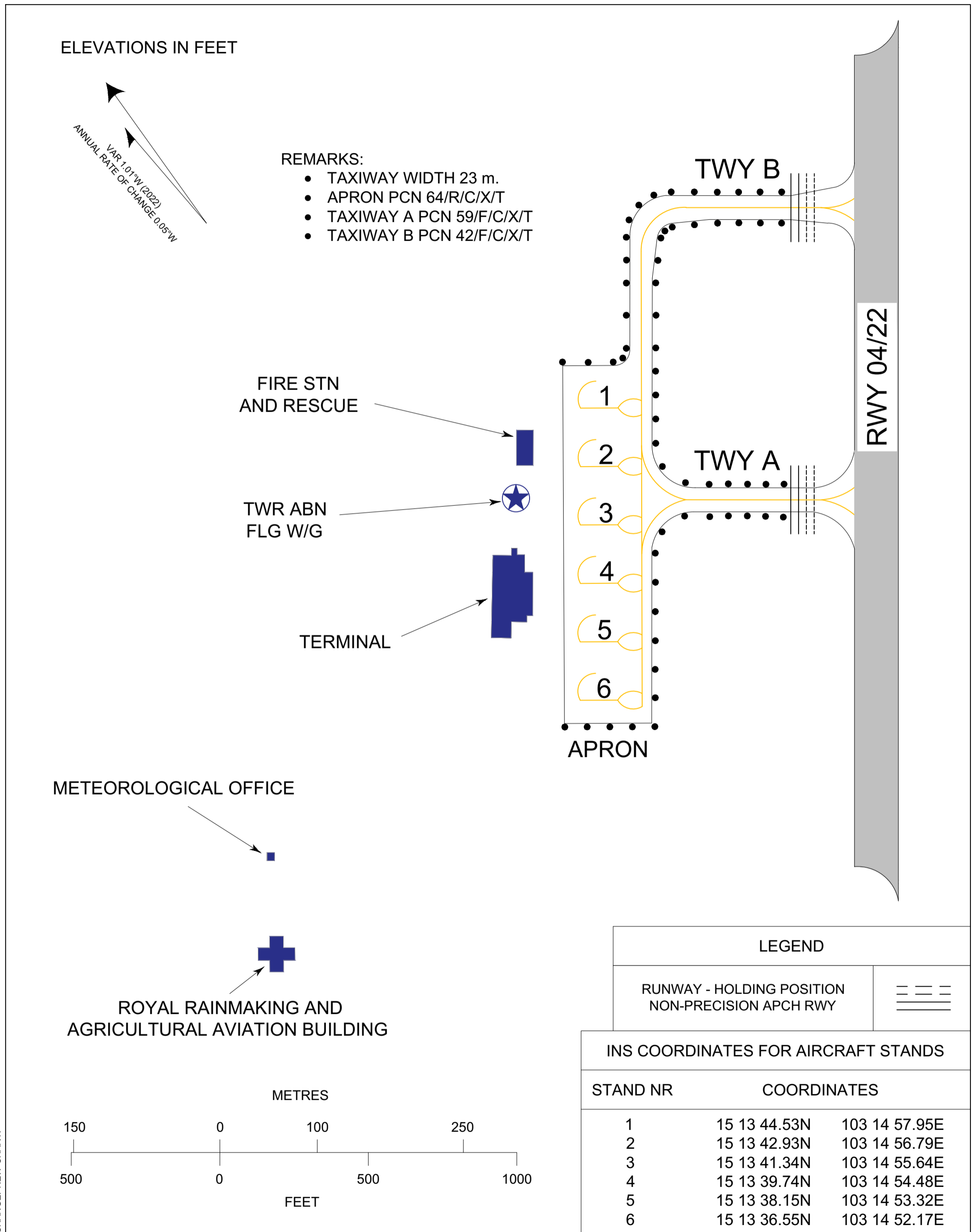
**INTENTIONALLY BLANK**

**AIRCRAFT PARKING/  
DOCKING CHART - ICAO**

**APRON ELEV  
599 FT**

**TWR 118.05  
236.6**

**BURI RAM / Buri Ram**



**INTENTIONALLY BLANK**

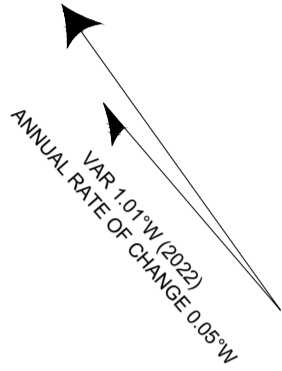
**AERODROME GROUND  
MOVEMENT CHART - ICAO**

**APRON ELEV  
599 FT**

**TWR 118.05  
236.6**

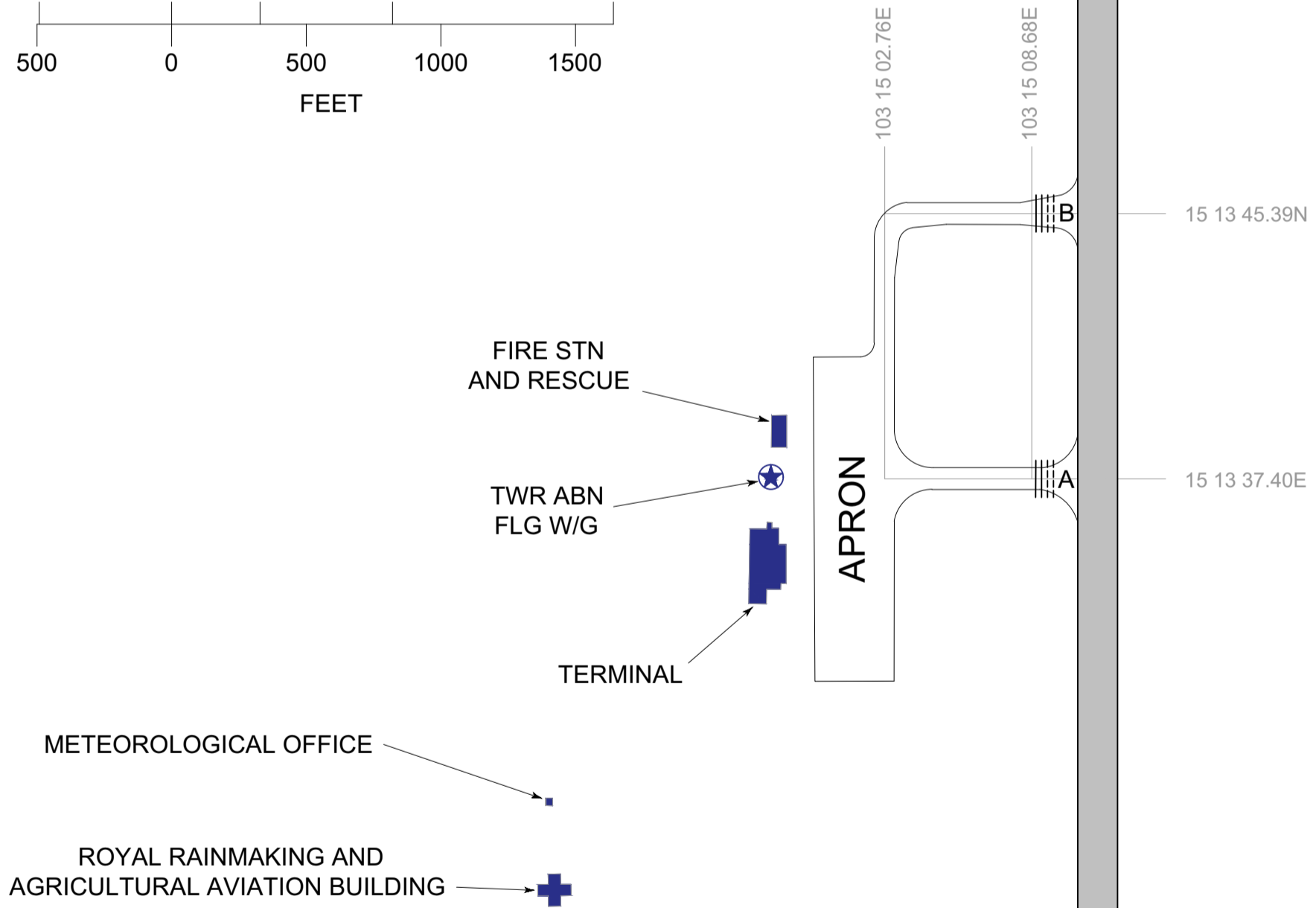
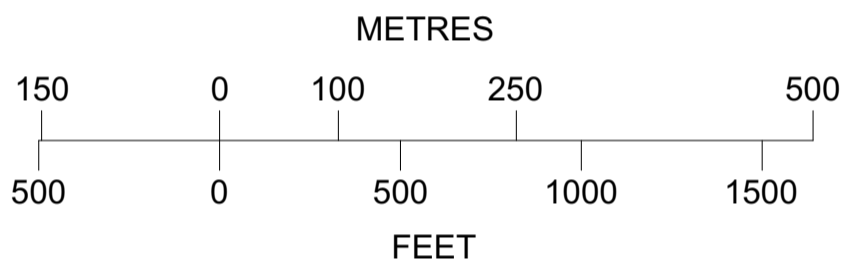
**BURI RAM / Buri Ram**

ELEVATIONS IN FEET  
DIMENSIONS IN METRES  
BEARINGS ARE MAGNETIC



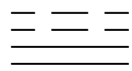
**REMARKS:**

- DETAILS OF AIRCRAFT STANDS ARE SHOWN IN AIRCRAFT PARKING/DOCKING CHART
- TAXIWAY WIDTH 23 m.
- APRON PCN 64/R/C/X/T
- TAXIWAY A PCN 59/F/C/X/T
- TAXIWAY B PCN 42/F/C/X/T
- TAXIWAY EDGE LIGHTS ON ALL TAXIWAYS



**LEGEND**

RUNWAY - HOLDING POSITION  
NON-PRECISION APCH RWY



CHANGE: NEW CHART.

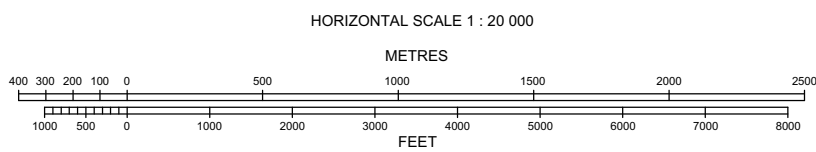
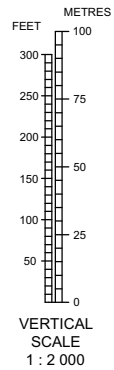
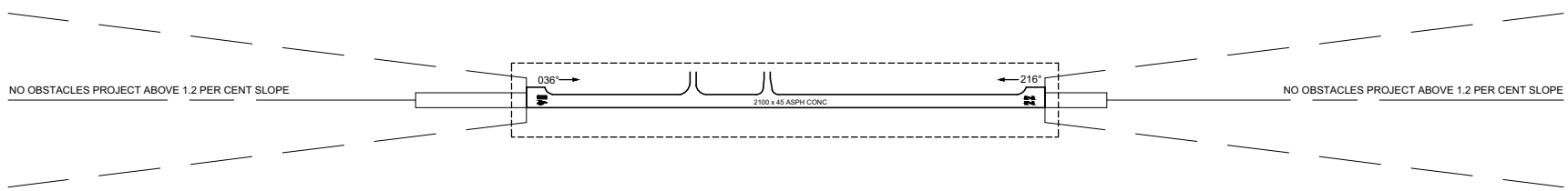
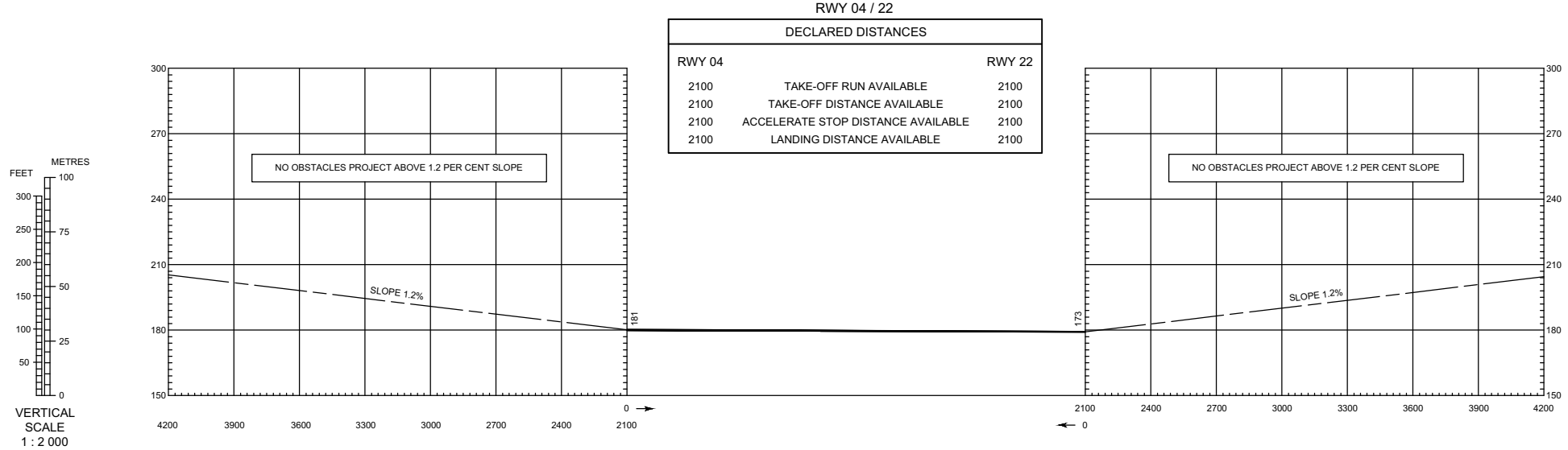
**INTENTIONALLY BLANK**

**AERODROME OBSTACLE CHART - ICAO**  
TYPE A (OPERATING LIMITATIONS)

**BURI RAM / Buri Ram Airport**

**DIMENSIONS AND ELEVATIONS IN METRES**

MAGNETIC VARIATION 1.01°W (2022)  
ANNUAL RATE OF CHANGE 0.05°W



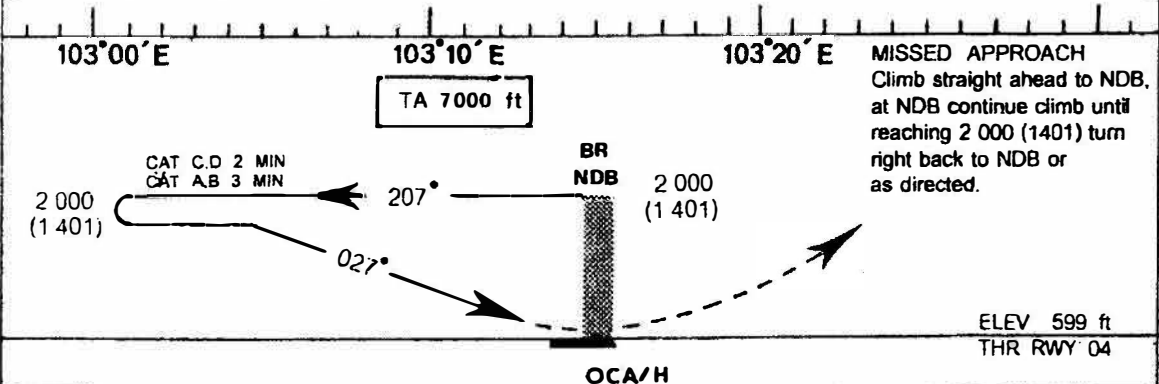
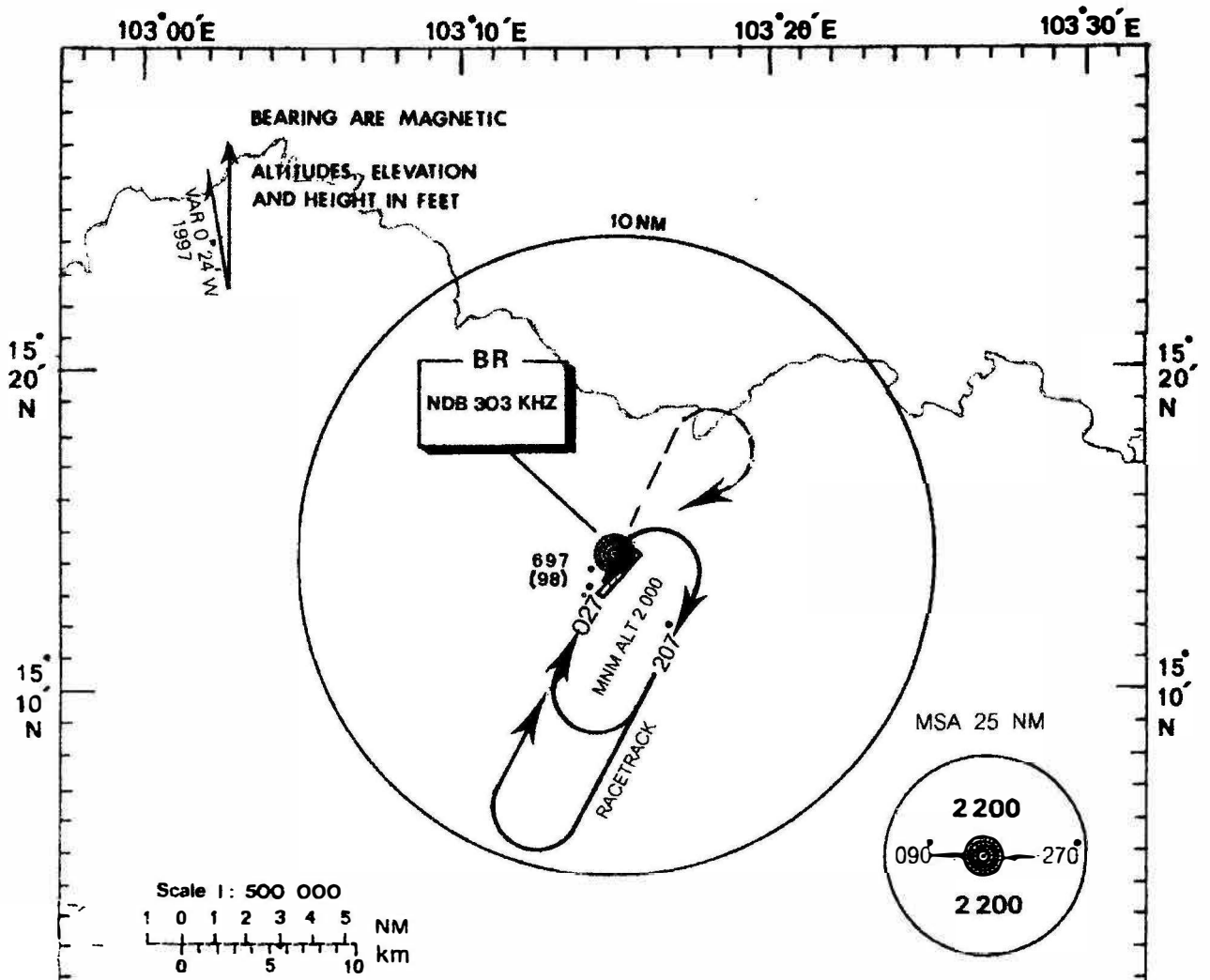
ORDER OF ACCURACY  
HORIZONTAL 0.5 m  
VERTICAL 0.5 m

CHANGE: NEW CHART.

**INTENTIONALLY BLANK**



<b>INSTRUMENT</b>	<b>AERODROME ELEV 599 ft</b>	APP : 125.55	<b>BURI RUM / Buri Rum</b>
<b>APPROACH</b>	<b>HEIGHT RELATED TO</b>	TWR : 118.05, 236.6	<b>NDB</b>
<b>CHART-ICAO</b>	<b>AERODROME ELEV</b>	ATIS : 127.05	<b>RWY 04</b>



CHANGE: ATIS FREQUENCY.

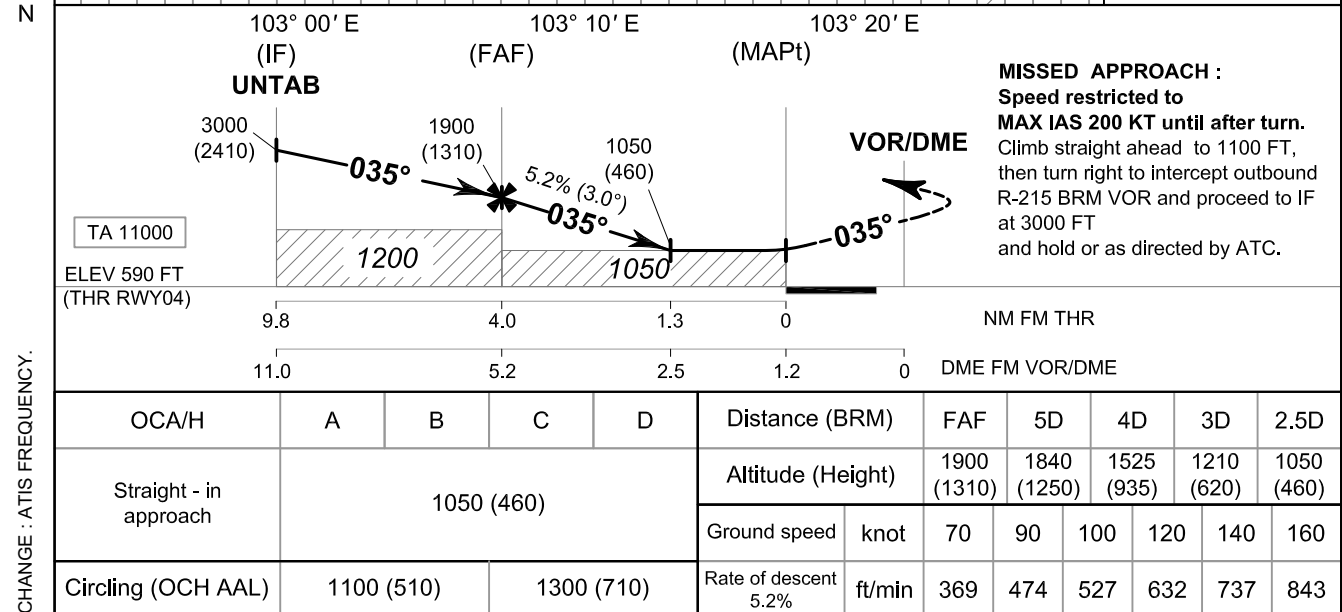
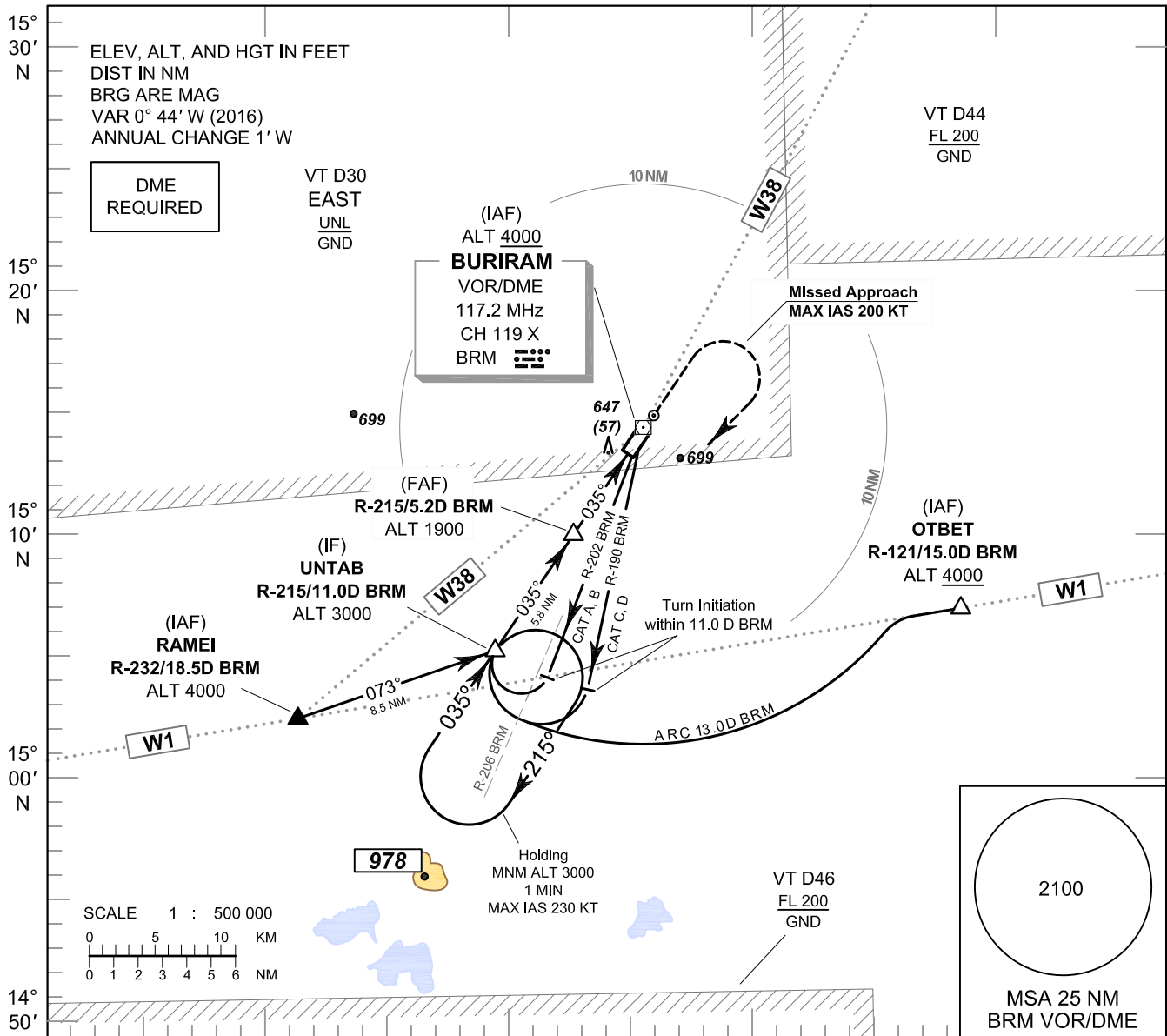
<b>Cat of Aircraft</b>	<b>A</b>	<b>B</b>	<b>C</b>	<b>D</b>
<b>Straight-in Approach</b>	999 (400)			
<b>Circling</b>	1009 (410)		1300 (701)	

**INTENTIONALLY BLANK**

**INSTRUMENT APPROACH CHART - ICAO** **AERODROME ELEV 590 FT**  
**HEIGHTS RELATED TO THR RWY04 - ELEV 590 FT**

APP : 125.55  
TWR : 118.05, 236.6  
ATIS : 127.05

**BURI RAM / Buri ram (VTUO)**  
**VOR RWY04**



**INSTRUMENT** AERODROME ELEV 590 FT  
**APPROACH** HEIGHTS RELATED TO  
**CHART - ICAO** THR RWY04 - ELEV 590 FT

**BURI RAM / Buri ram (VTUU)**

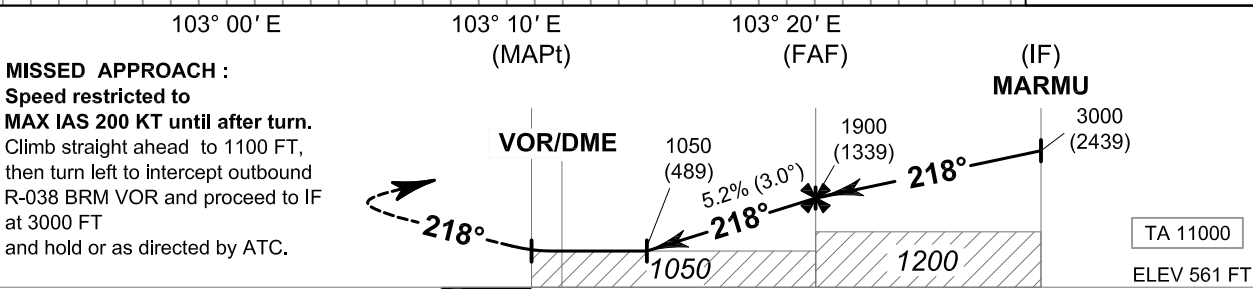
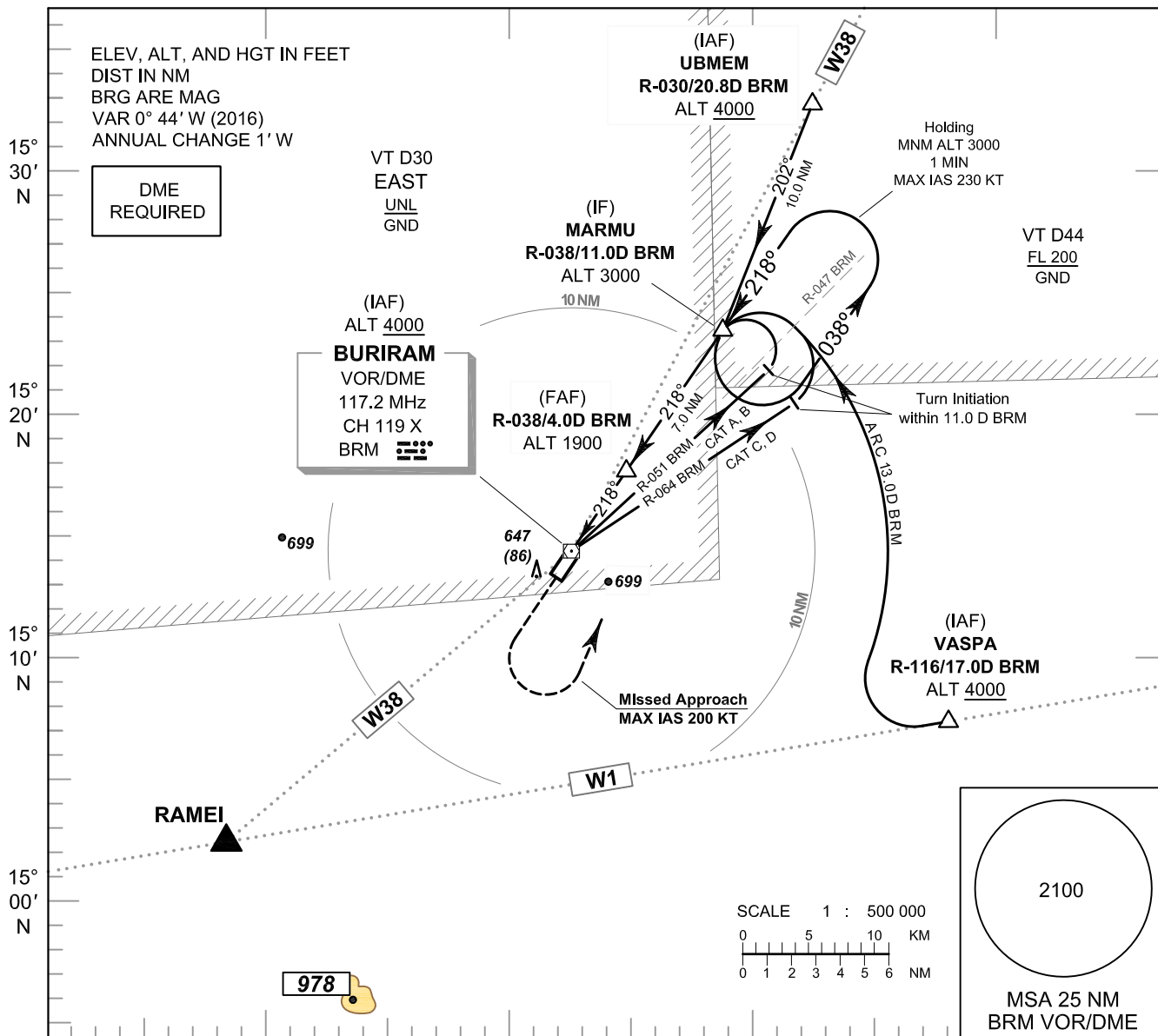
**VOR RWY04**

FIX/POINT		COORDINATES	
(IAF) VOR	BRM	15° 14' 22.43" N	103° 15' 31.59" E
(IAF) RAMEI	R-232 / 18.5 D BRM	15° 02' 40.15" N	103° 00' 40.02" E
(IAF) OTBET	R-121 / 15.0 D BRM	15° 06' 41.69" N	103° 28' 52.23" E
(IF) UNTAB	R-215 / 11.0 D BRM	15° 05' 17.27" N	103° 09' 03.46" E
(FAF)	R-215 / 5.2 D BRM	15° 10' 02.55" N	103° 12' 26.48" E
(MAPt)	R-215 / 1.2 D BRM	15° 13' 20.79" N	103° 14' 47.67" E

**INSTRUMENT APPROACH CHART - ICAO** **AERODROME ELEV 590 FT**  
**HEIGHTS RELATED TO THR RWY22 - ELEV 561 FT**

APP : 125.55  
TWR : 118.05, 236.6  
ATIS : 127.05

**BURI RAM / Buri ram (VTUU)**  
**VOR RWY22**



CHANGE : ATIS FREQUENCY.

		NM FM THR		0	0.1	1.4	4.1	11.1				
		DME FM VOR/DME		0	1.3	4.0	11.0					
Straight - in approach	OCA/H	A	B	C	D	Distance (BRM)	1.3D	2D	3D	FAF		
	Altitude (Height)	1050 (489)				1050 (489)	1275 (714)	1590 (1029)	1900 (1339)			
Circling (OCH AAL)	Ground speed					knot	70	90	100	120	140	160
	Rate of descent 5.2%					ft/min	369	474	527	632	737	843

**INSTRUMENT** AERODROME ELEV 590 FT  
**APPROACH** HEIGHTS RELATED TO  
**CHART - ICAO** THR RWY22 - ELEV 561 FT

**BURI RAM / Buri ram (VTUA)**

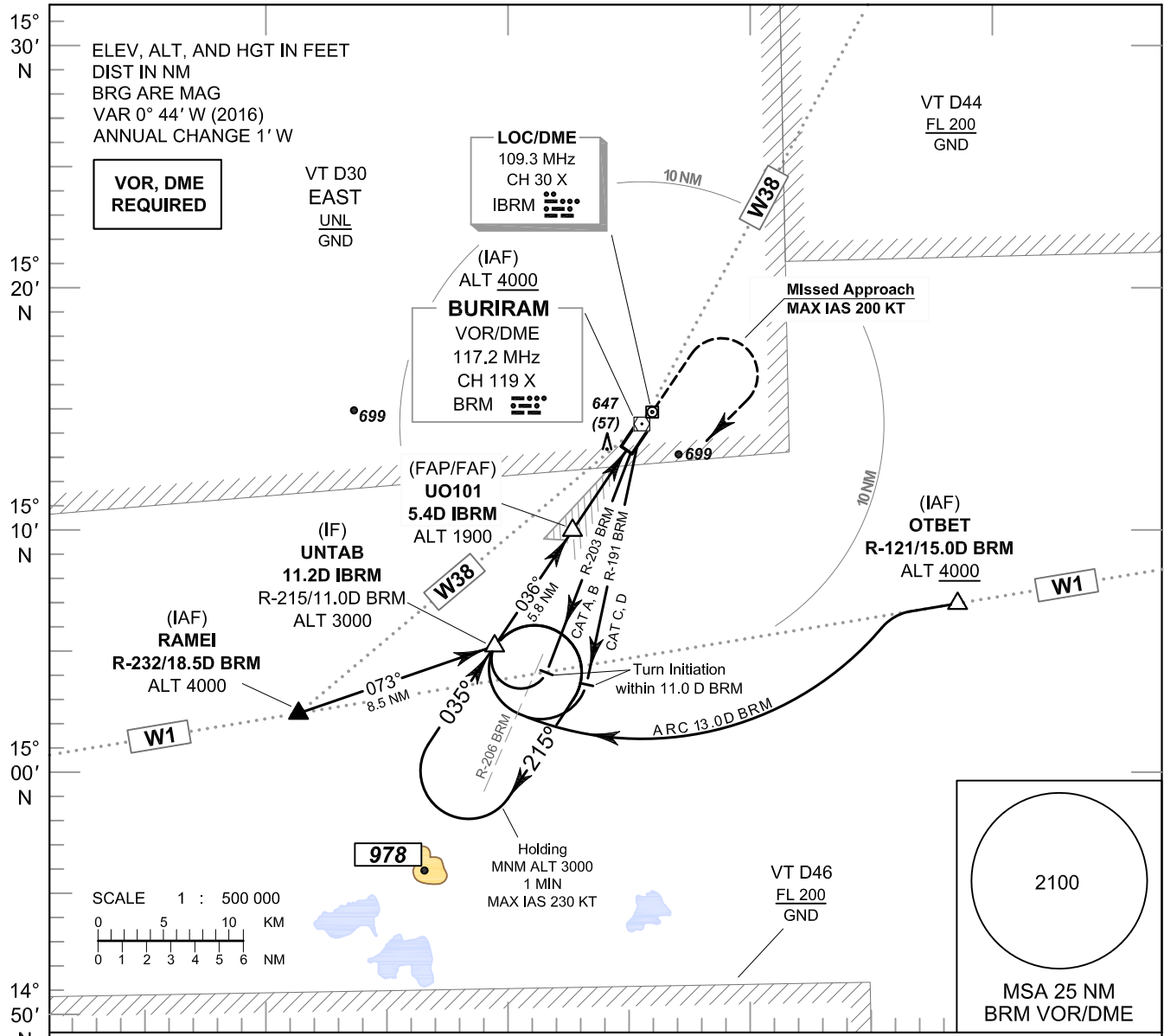
**VOR RWY22**

FIX/POINT		COORDINATES	
(IAF) VOR	BRM	15° 14' 22.43" N	103° 15' 31.59" E
(IAF) VASPA	R-116 / 17.0 D BRM	15° 07' 03.23" N	103° 31' 24.45" E
(IAF) UBMEM	R-030 / 20.8 D BRM	15° 32' 32.62" N	103° 26' 07.39" E
(IF) MARMU	R-038 / 11.0 D BRM	15° 23' 10.05" N	103° 22' 24.90" E
(FAF)	R-038 / 4.0 D BRM	15° 17' 34.32" N	103° 18' 01.82" E
(MAPt)	R-218 / 0.1 D BRM	15° 14' 17.63" N	103° 15' 27.84" E

**INSTRUMENT APPROACH CHART - ICAO** **AERODROME ELEV 590 FT**  
**HEIGHTS RELATED TO THR RWY04 - ELEV 590 FT**

APP : 125.55  
TWR : 118.05, 236.6  
ATIS : 127.05

**BURI RAM / Buri ram (VTUU)**  
**ILS or LOC y RWY04**



		103° 00' E	103° 10' E	103° 20' E									
		(IF) UNTAB	(FAP/FAF) UO101	MAPt (LOC only)									
		3000 (2410)	1900 (1310)	1050 (460)									
		RDH 50 FT	GP 3.0° (5.2%)	LOC/DME									
		TA 11000	036°	036°									
		ELEV 590 FT (THR RWY04)	1200	1050									
			9.8	4.0	1.3	0							
			11.2	5.4	2.7	1.4							
							NM FM THR						
							DME FM LOC/DME						
OCA/H		A	B	C	D	GS OUT	Distance (IBRM)	FAF	5D	4D	3D	2.7D	
Straight-in approach		CAT I		820 (230) 840 (250)			Altitude (Height)	1900 (1310)	1775 (1185)	1460 (870)	1145 (555)	1050 (460)	
LOC only		1050 (460)				Ground speed	knot	70	90	100	120	140	160
Circling (OCH AAL)		1100 (510)		1300 (710)		Rate of descent 5.2%	ft/min	369	474	527	632	737	843

CHANGE : ATIS FREQUENCY.

**INSTRUMENT** AERODROME ELEV 590 FT  
**APPROACH** HEIGHTS RELATED TO  
**CHART - ICAO** THR RWY04 - ELEV 590 FT

**BURI RAM / Buri ram (VTUU)**  
**ILS or LOC y RWY04**

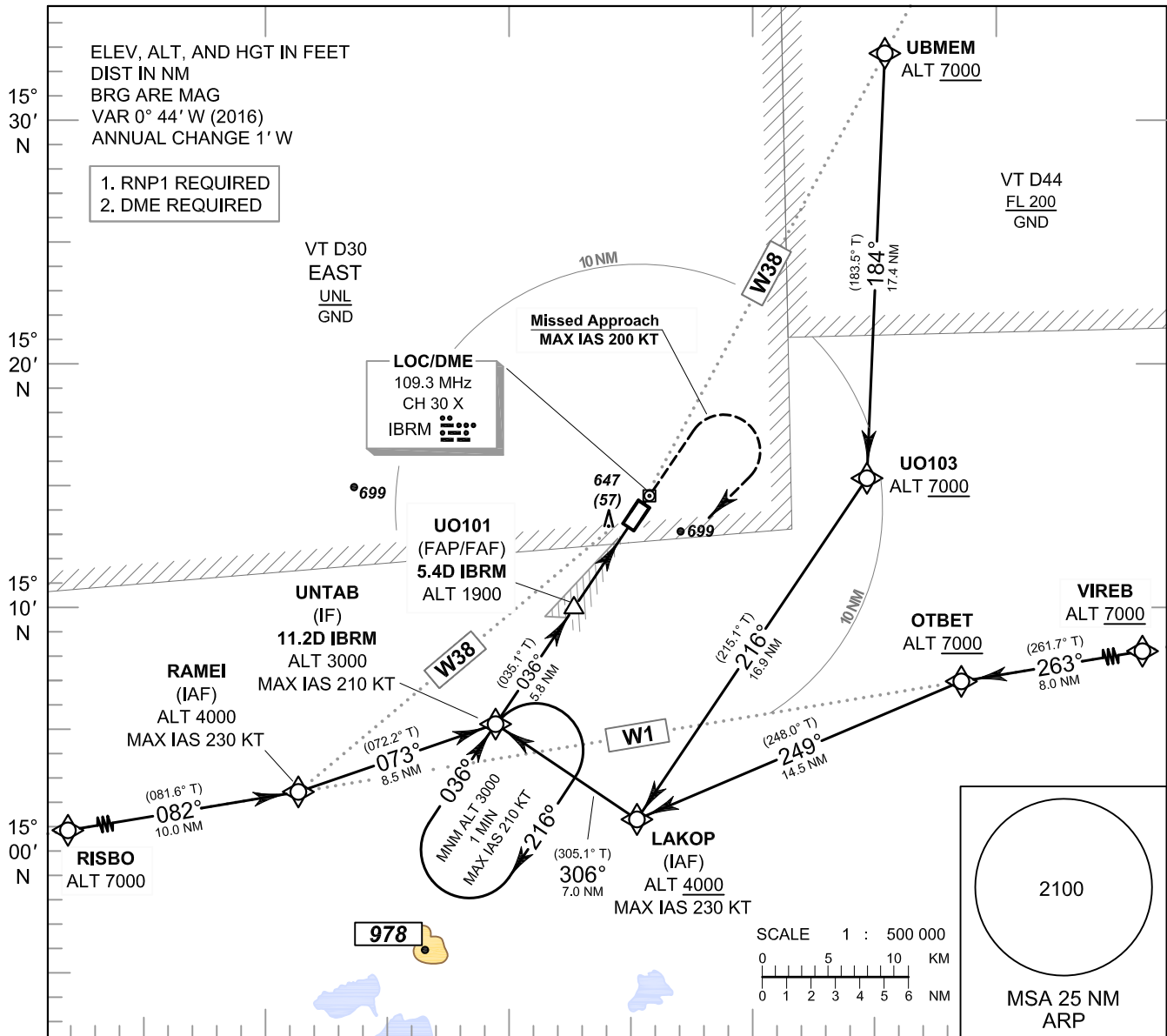
FIX/POINT		COORDINATES	
(IAF) VOR	BRM	15° 14' 22.43" N	103° 15' 31.59" E
(IAF) RAMEI	R-232 / 18.5 D BRM	15° 02' 40.15" N	103° 00' 40.02" E
(IAF) OTBET	R-121 / 15.0 D BRM	15° 06' 41.69" N	103° 28' 52.23" E
(IF) UNTAB	11.2 D IBRM	15° 05' 17.27" N	103° 09' 03.46" E
(FAP/FAF) UO101	5.4 D IBRM	15° 10' 01.26" N	103° 12' 28.77" E
MAPt (LOC only) THR RWY04	1.4 D IBRM	15° 13' 18.31" N	103° 14' 51.34" E



**INSTRUMENT AERODROME ELEV 590 FT**  
**APPROACH HEIGHTS RELATED TO**  
**CHART - ICAO THR RWY04 - ELEV 590 FT**

APP : 125.55  
TWR : 118.05, 236.6  
ATIS : 127.05

**BURI RAM / Buri ram (VTUO)**  
**ILS or LOC z RWY04**



		103° 00' E	103° 10' E	103° 20' E									
		UNTAB (IF)	UO101 (FAP/FAF)	MAPt (LOC only)									
		3000 (2410)	1900 (1310)	1050 (460)									
		RDH 50 FT											
		TA 11000											
		ELEV 590 FT (THR RWY04)											
		9.8	4.0	1.3	0	NM FM THR							
		11.2	5.4	2.7	1.4	DME FM LOC/DME							
CHANGE : ATIS FREQUENCY	OCA/H	A	B	C	D	GS OUT	Distance (IBRM)	FAF	5D	4D	3D	2.7D	
	Straight - in approach	CAT I	820 (230)	840 (250)			Altitude (Height)	1900 (1310)	1775 (1185)	1460 (870)	1145 (555)	1050 (460)	
	LOC only	1050 (460)				Ground speed	knot	70	90	100	120	140	160
	Circling (OCH AAL)	1100 (510)	1300 (710)		Rate of descent 5.2%	ft/min	369	474	527	632	737	843	

**MISSED APPROACH :**  
Speed restricted to MAX IAS 200 KT until after turn.  
Climb on track 036° to 1100 FT, then turn right direct to IF at 3000 FT and hold or as directed by ATC.

**INSTRUMENT AERODROME ELEV 590 FT**  
**APPROACH HEIGHTS RELATED TO**  
**CHART - ICAO THR RWY04 - ELEV 590 FT**

**BURI RAM / Buri ram (VTUU)**  
**ILS or LOC z RWY04**

**TABULAR DESCRIPTION**

ILS or LOC z RWY04											
Serial Number	Path Descriptor	Waypoint Identifier	Flyover	Course ° M (° T)	Magnetic Variation	Distance (NM)	Turn Direction	Altitude (FT)	Speed (KT)	VPA/ RDH	Navigation Specification
010	IF	RISBO	-	-	+0.77	-	-	@7000	-	-	RNP 1
020	TF	RAMEI (IAF)	-	082°(081.6°)	+0.77	10.0	L	@4000	-230	-	RNP 1
030	TF	UNTAB (IF)	-	073°(072.2°)	+0.77	8.5	-	@3000	-210	-	RNP 1
010	IF	VIREB	-	-	+0.77	-	-	+7000	-	-	RNP 1
020	TF	OTBET	-	263°(261.7°)	+0.77	8.0	L	+7000	-	-	RNP 1
030	TF	LAKOP (IAF)	-	249°(248.0°)	+0.77	14.5	R	+4000	-230	-	RNP 1
040	TF	UNTAB (IF)	-	306°(305.1°)	+0.77	7.0	-	@3000	-210	-	RNP 1
010	IF	UBMEM	-	-	+0.77	-	-	+7000	-	-	RNP 1
020	TF	UO103	-	184°(183.5°)	+0.77	17.4	R	+7000	-	-	RNP 1
030	TF	LAKOP (IAF)	-	216°(215.1°)	+0.77	16.9	R	+4000	-230	-	RNP 1
040	TF	UNTAB (IF)	-	306°(305.1°)	+0.77	7.0	-	@3000	-210	-	RNP 1
010	IF	UNTAB (IF)	-	-	+0.77	-	-	@3000	-210	-	RNP 1
TRANSITION TO ILS or LOC											
020	TF	UO101 (FAF)	-	036°(035.1°)	+0.77	5.8	-	@1900	-	-	ILS
030	TF	UO102 (MAPt)	Y	036°(035.1°)	+0.77	4.0	-	@640	-	-3.0/50	ILS
040	CA	-	-	036°(035.1°)	+0.77	-	-	+1100	-200	-	RNP 1
050	DF	UNTAB (IF)	-	-	+0.77	-	R	+3000	-200	-	RNP 1
060	HM	UNTAB (IF)	Y	036°(035.1°)	+0.77	1 minute	R	+3000	-210	-	RNP 1

**INSTRUMENT** AERODROME ELEV 590 FT  
**APPROACH** HEIGHTS RELATED TO  
**CHART - ICAO** THR RWY04 - ELEV 590 FT

**BURI RAM / Buri ram (VTUA)**  
**ILS or LOC z RWY04**

FIX/POINT		COORDINATES	
(IF) UNTAB	11.2 D IBRM	15° 05' 17.27" N	103° 09' 03.46" E
(FAP/FAF) UO101	5.4 D IBRM	15° 10' 01.26" N	103° 12' 28.77" E
MAPt (LOC only) THR RWY04	1.4 D IBRM	15° 13' 18.31" N	103° 14' 51.34" E
LOC/DME	IBRM	15° 14' 27.29" N	103° 15' 41.27" E

**INSTRUMENT** AERODROME ELEV 590 FT  
**APPROACH** HEIGHTS RELATED TO  
**CHART - ICAO** THR RWY04 - ELEV 590 FT

**BURI RAM / Buri ram (VTUA)**  
**ILS or LOC z RWY04**

**WAYPOINT LIST**

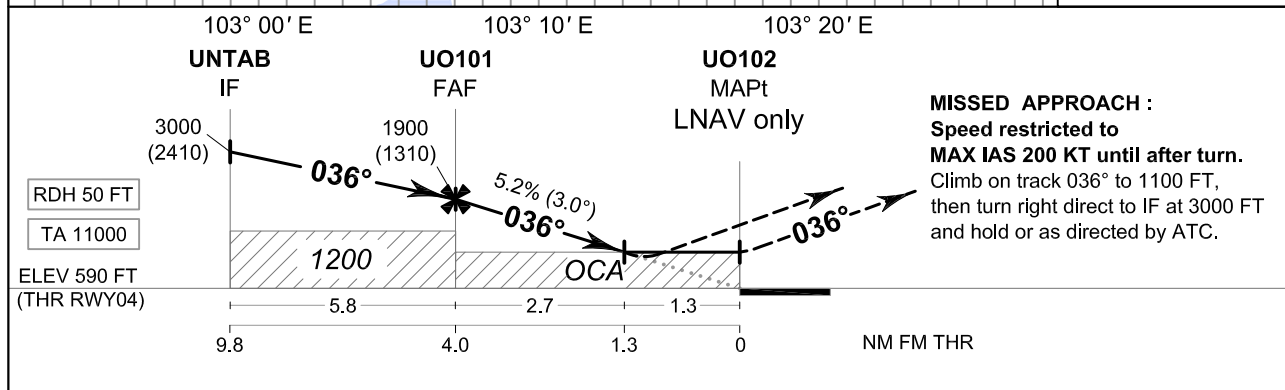
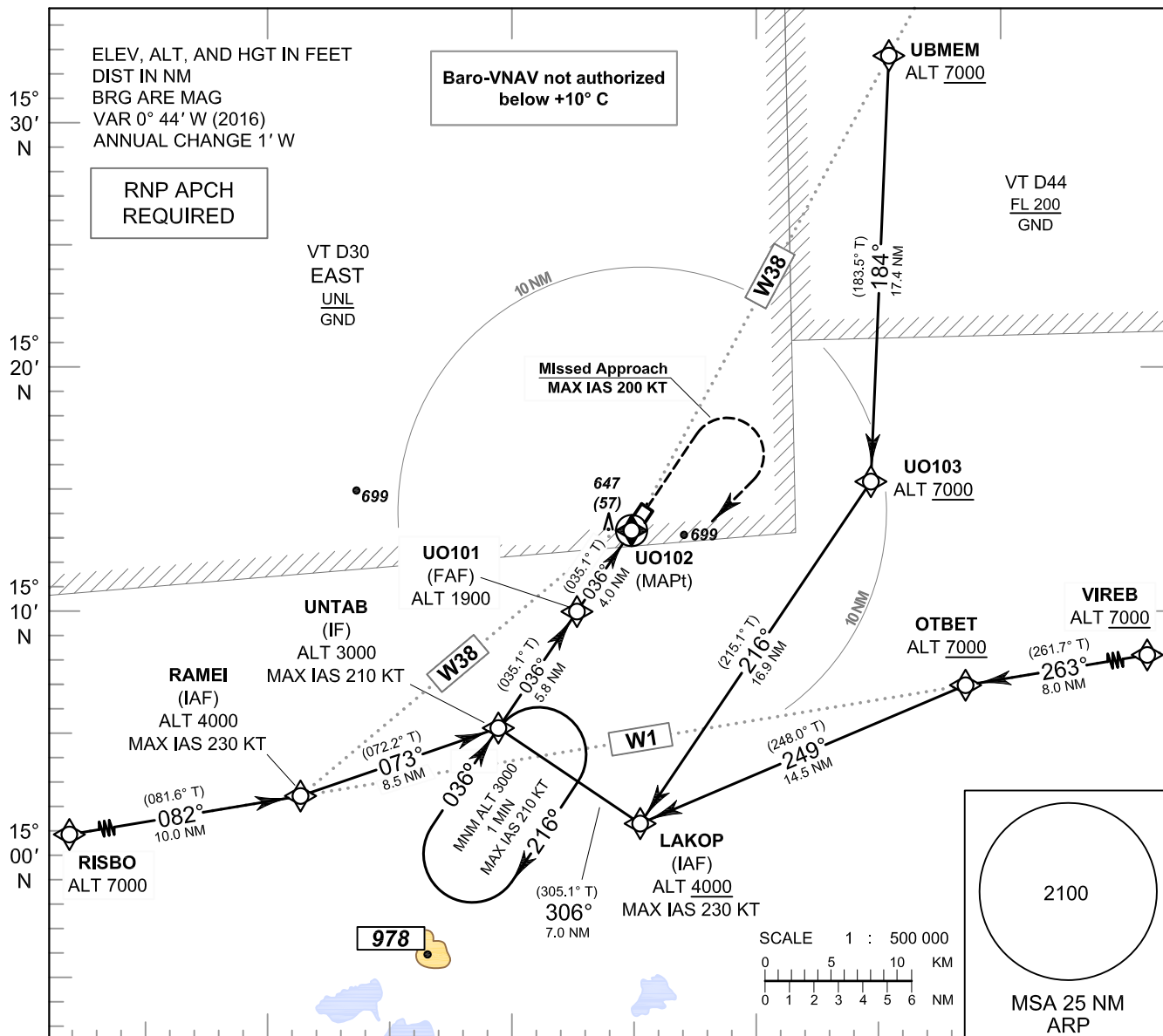
<b>ILS or LOC z RWY04</b>	
Waypoint Identifier	Coordinates
RISBO	15° 01' 11.70" N 102° 50' 26.73" E
RAMEI	15° 02' 40.15" N 103° 00' 40.02" E
VIREB	15° 07' 51.06" N 103° 37' 03.27" E
OTBET	15° 06' 41.69" N 103° 28' 52.23" E
UBMEM	15° 32' 32.62" N 103° 26' 07.39" E
UO103	15° 15' 07.45" N 103° 25' 01.52" E
LAKOP	15° 01' 14.86" N 103° 14' 58.67" E
UNTAB	15° 05' 17.27" N 103° 09' 03.46" E
UO101	15° 10' 01.26" N 103° 12' 28.77" E
UO102	15° 13' 18.31" N 103° 14' 51.34" E

**INSTRUMENT APPROACH CHART - ICAO**  
**AERODROME ELEV 590 FT**  
**HEIGHTS RELATED TO THR RWY04 - ELEV 590 FT**

APP : 125.55  
 TWR : 118.05, 236.6  
 ATIS : 127.05

**BURI RAM / Buri ram (VTUO)**

**RNP RWY04**



**MISSED APPROACH :**  
 Speed restricted to MAX IAS 200 KT until after turn.  
 Climb on track 036° to 1100 FT, then turn right direct to IF at 3000 FT and hold or as directed by ATC.

CHANGE : ATIS FREQUENCY.

OCA/H	A	B	C	D	NM to NEXT WPT	FAF	3NM	2NM	1.3NM				
LNAV/VNAV	900 (310)				Altitude (Height)	1900 (1310)	1590 (1000)	1270 (680)	1050 (460)				
LNAV	1050 (460)				Ground speed	knot	70	90	100	120	140	160	
Circling (OCH AAL)	1100 (510)		1300 (710)		Rate of descent	5.2%	ft/min	369	474	527	632	737	843

**INSTRUMENT AERODROME ELEV 590 FT**  
**APPROACH HEIGHTS RELATED TO**  
**CHART - ICAO THR RWY04 - ELEV 590 FT**

**BURI RAM / Buri ram (VTUA)**  
**RNP RWY04**

**TABULAR DESCRIPTION**

RNP RWY04											
Serial Number	Path Descriptor	Waypoint Identifier	Flyover	Course ° M (° T)	Magnetic Variation	Distance (NM)	Turn Direction	Altitude (FT)	Speed (KT)	VPA/TCH	Navigation Specification
010	IF	RISBO	-	-	+0.77	-	-	@7000	-	-	RNP APCH
020	TF	RAMEI (IAF)	-	082°(081.6°)	+0.77	10.0	L	@4000	-230	-	RNP APCH
030	TF	UNTAB (IF)	-	073°(072.2°)	+0.77	8.5	-	@3000	-210	-	RNP APCH
010	IF	VIREB	-	-	+0.77	-	-	+7000	-	-	RNP APCH
020	TF	OTBET	-	263°(261.7°)	+0.77	8.0	L	+7000	-	-	RNP APCH
030	TF	LAKOP (IAF)	-	249°(248.0°)	+0.77	14.5	R	+4000	-230	-	RNP APCH
040	TF	UNTAB (IF)	-	306°(305.1°)	+0.77	7.0	-	@3000	-210	-	RNP APCH
010	IF	UBMEM	-	-	+0.77	-	-	+7000	-	-	RNP APCH
020	TF	UO103	-	184°(183.5°)	+0.77	17.4	R	+7000	-	-	RNP APCH
030	TF	LAKOP (IAF)	-	216°(215.1°)	+0.77	16.9	R	+4000	-230	-	RNP APCH
040	TF	UNTAB (IF)	-	306°(305.1°)	+0.77	7.0	-	@3000	-210	-	RNP APCH
010	IF	UNTAB (IF)	-	-	+0.77	-	-	@3000	-210	-	RNP APCH
020	TF	UO101 (FAF)	-	036°(035.1°)	+0.77	5.8	-	@1900	-	-	RNP APCH
030	TF	UO102 (MAPt)	Y	036°(035.1°)	+0.77	4.0	-	@640	-	-3.0/50	RNP APCH
040	CA	-	-	036°(035.1°)	+0.77	-	-	+1100	-200	-	RNP APCH
050	DF	UNTAB (IF)	-	-	+0.77	-	R	+3000	-200	-	RNP APCH
060	HM	UNTAB (IF)	Y	036°(035.1°)	+0.77	1 minute	R	+3000	-210	-	RNP APCH

CHANGE: CHART TITLE.

**INSTRUMENT** AERODROME ELEV 590 FT  
**APPROACH** HEIGHTS RELATED TO  
**CHART - ICAO** THR RWY04 - ELEV 590 FT

**BURI RAM / Buri ram (VTUA)**  
**RNP RWY04**

**WAYPOINT LIST**

RNP RWY04	
Waypoint Identifier	Coordinates
RISBO	15° 01' 11.70" N 102° 50' 26.73" E
RAMEI	15° 02' 40.15" N 103° 00' 40.02" E
VIREB	15° 07' 51.06" N 103° 37' 03.27" E
OTBET	15° 06' 41.69" N 103° 28' 52.23" E
UBMEM	15° 32' 32.62" N 103° 26' 07.39" E
UO103	15° 15' 07.45" N 103° 25' 01.52" E
LAKOP	15° 01' 14.86" N 103° 14' 58.67" E
UNTAB	15° 05' 17.27" N 103° 09' 03.46" E
UO101	15° 10' 01.26" N 103° 12' 28.77" E
UO102	15° 13' 18.31" N 103° 14' 51.34" E

CHANGE: CHART TITLE.

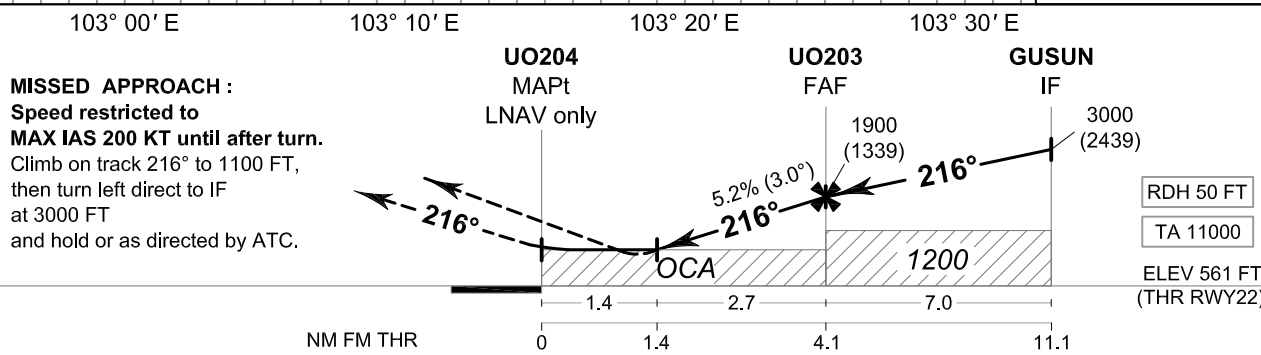
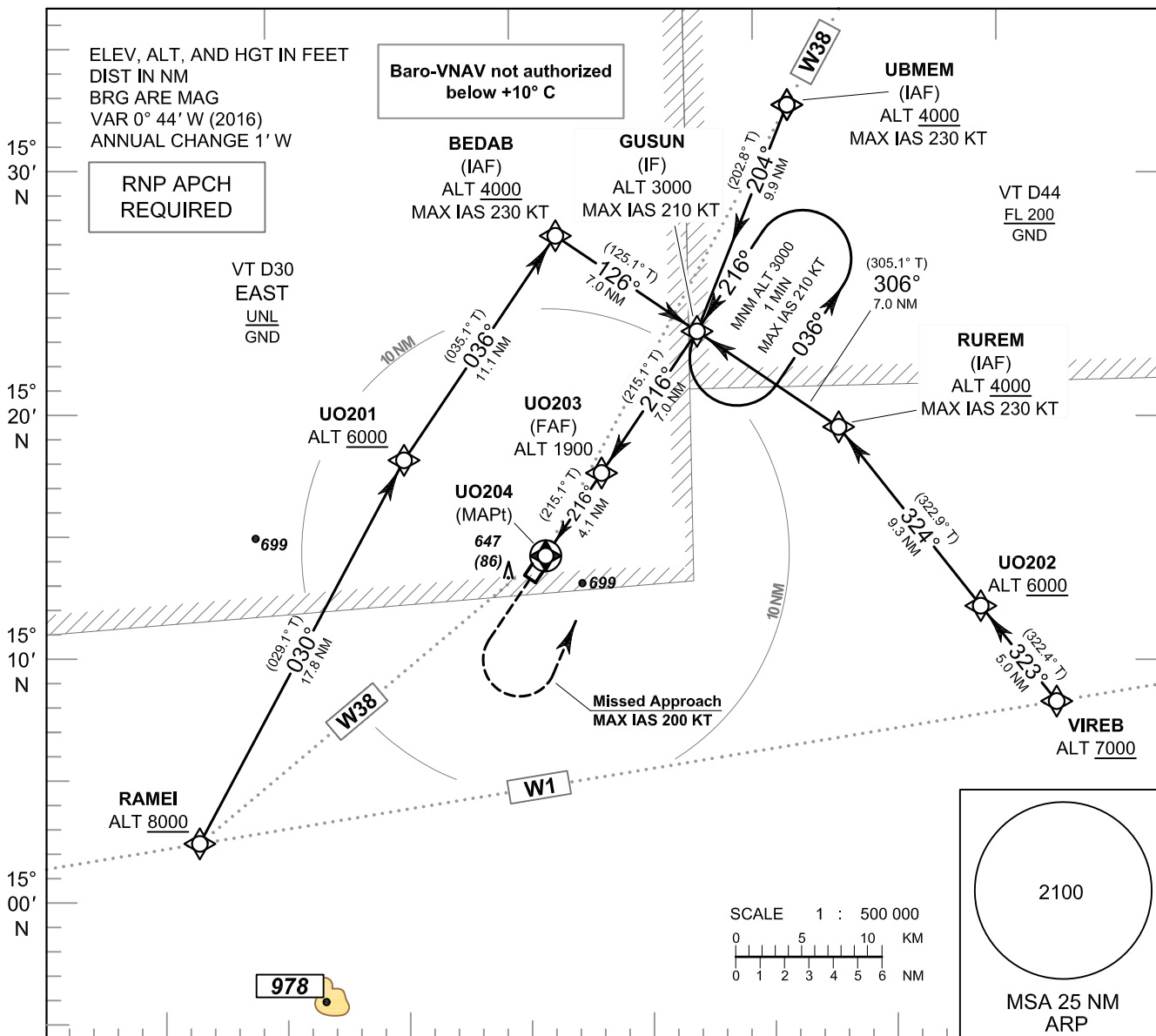
**INTENTIONALLY BLANK**



**INSTRUMENT APPROACH CHART - ICAO** **AERODROME ELEV 590 FT**  
HEIGHTS RELATED TO  
THR RWY22 - ELEV 561 FT

APP : 125.55  
TWR : 118.05, 236.6  
ATIS : 127.05

**BURI RAM / Buri ram (VTUU)**  
**RNP RWY22**



CHANGE : ATIS FREQUENCY.

OCA/H	A	B	C	D	NM to NEXT WPT	1.4 NM	2 NM	3 NM	FAF				
LNAV/VNAV	850 (289)				Altitude (Height)	1050 (489)	1245 (684)	1560 (999)	1900 (1339)				
LNAV	1050 (489)				Ground speed	knot	70	90	100	120	140	160	
Circling (OCH AAL)	1100 (510)		1300 (710)		Rate of descent	5.2%	ft/min	369	474	527	632	737	843

**INSTRUMENT AERODROME ELEV 590 FT**  
**APPROACH HEIGHTS RELATED TO**  
**CHART - ICAO THR RWY22 - ELEV 561 FT**

**BURI RAM / Buri ram (VTUA)**  
**RNP RWY22**

**TABULAR DESCRIPTION**

RNP RWY22											
Serial Number	Path Descriptor	Waypoint Identifier	Flyover	Course ° M (° T)	Magnetic Variation	Distance (NM)	Turn Direction	Altitude (FT)	Speed (KT)	VPA/TCH	Navigation Specification
010	IF	UBMEM (IAF)	-	-	+0.77	-	-	+4000	-230	-	RNP APCH
020	TF	GUSUN (IF)	-	204°(202.8°)	+0.77	9.9	-	@3000	-210	-	RNP APCH
010	IF	RAMEI	-	-	+0.77	-	-	+8000	-	-	RNP APCH
020	TF	UO201	-	030°(029.1°)	+0.77	17.8	R	+6000	-	-	RNP APCH
030	TF	BEDAB (IAF)	-	036°(035.1°)	+0.77	11.1	R	+4000	-230	-	RNP APCH
040	TF	GUSUN (IF)	-	126°(125.1°)	+0.77	7.0	-	@3000	-210	-	RNP APCH
010	IF	VIREB	-	-	+0.77	-	-	+7000	-	-	RNP APCH
020	TF	UO202	-	323°(322.4°)	+0.77	5.0	R	+6000	-	-	RNP APCH
030	TF	RUREM (IAF)	-	324°(322.9°)	+0.77	9.3	L	+4000	-230	-	RNP APCH
040	TF	GUSUN (IF)	-	306°(305.1°)	+0.77	7.0	-	@3000	-210	-	RNP APCH
010	IF	GUSUN (IF)	-	-	+0.77	-	-	@3000	-210	-	RNP APCH
020	TF	UO203 (FAF)	-	216°(215.1°)	+0.77	7.0	-	@1900	-	-	RNP APCH
030	TF	UO204 (MAPt)	Y	216°(215.1°)	+0.77	4.1	-	@611	-	-3.0/50	RNP APCH
040	CA	-	-	216°(215.1°)	+0.77	-	-	+1100	-200	-	RNP APCH
050	DF	GUSUN (IF)	-	-	+0.77	-	L	+3000	-200	-	RNP APCH
060	HM	GUSUN (IF)	Y	216°(215.1°)	+0.77	1 minute	L	+3000	-210	-	RNP APCH

CHANGE: CHART TITLE.

**INSTRUMENT** AERODROME ELEV 590 FT  
**APPROACH** HEIGHTS RELATED TO  
**CHART - ICAO** THR RWY22 - ELEV 561 FT

**BURI RAM / Buri ram (VTUA)**  
**RNP RWY22**

**WAYPOINT LIST**

RNP RWY22	
Waypoint Identifier	Coordinates
UBMEM	15° 32' 32.62" N 103° 26' 07.39" E
RAMEI	15° 02' 40.15" N 103° 00' 40.02" E
UO201	15° 18' 16.76" N 103° 09' 36.36" E
BEDAB	15° 27' 24.34" N 103° 16' 12.84" E
VIREB	15° 07' 51.06" N 103° 37' 03.27" E
UO202	15° 11' 50.96" N 103° 33' 53.10" E
RUREM	15° 19' 19.03" N 103° 28' 04.00" E
GUSUN	15° 23' 21.76" N 103° 22' 08.54" E
UO203	15° 17' 36.46" N 103° 17' 58.27" E
UO204	15° 14' 14.36" N 103° 15' 31.92" E

CHANGE: CHART TITLE.

**INTENTIONALLY BLANK**