

VTUN AD 2.1 AERODROME LOCATION INDICATOR AND NAME

VTUN - NAKHON RATCHASIMA / KHORAT AIRPORT

VTUN AD 2.2 AERODROME GEOGRAPHICAL AND ADMINISTRATIVE DATA

1	ARP coordinates and site at AD	145604N 1020444E
2	Direction and distance from (city)	020/5 KM from Nakhon Ratchasima
3	Elevation/Reference temperature	222 M(729) /35°C
4	Geoid Undulation at AD ELEV PSN	NIL
5	MAG VAR/Annual change	NIL
6	AD Administration, address, telephone, telefax, telex, AFS	Wing 1, Khorat AFB Royal Thai Air Force Nakhon Ratchasima Province Thailand Tel: +662 534 6000 Ext. 40554-5 Fax: +668 7248 6083 AFS: VTUNYXYX
7	Types of traffic permitted (IFR/VFR)	IFR/VFR
8	Remarks	Operator: Royal Thai Air Force

VTUN AD 2.3 OPERATIONAL HOURS

1	Aerodrome Operator	0100-0900 MON-FRI
2	Customs and immigration	NIL
3	Health and sanitation	0100-0900 MON-FRI
4	AIS Briefing Office	0100-0900 MON-FRI
5	ATS Reporting Office (ARO)	NIL
6	MET Briefing Office	0100-0900 MON-FRI
7	ATS	H24
8	Fuelling	0100-0900 MON-FRI
9	Handling	0100-0900 MON-FRI
10	Security	H24
11	De-icing	NIL
12	Remarks	NIL

VTUN AD 2.4 HANDLING SERVICES AND FACILITIES

1	Cargo-handling facilities	NIL
2	Fuel/oil types	JP8, Octane 100/130, Oil
3	Fuelling facilities/capacity	4JP8 trucks 20,000 L and 1 Octain trucks 6,000 L
4	De-icing facilities	NIL
5	Hangar space for visiting aircraft	NIL
6	Repair facilities for visiting aircraft	NIL
7	Remarks	NIL

VTUN AD 2.5 PASSENGER FACILITIES

1	Hotels	Near the AD and in the city
2	Restaurants	In the city
3	Transportation	Car hire from and to the city
4	Medical facilities	First aid at Aerodrome, hospital in the city
5	Bank and Post Office	In the city
6	Tourist Office	Office in the city
7	Remarks	NIL

VTUN AD 2.6 RESCUE AND FIRE FIGHTING SERVICES

1	AD category for fire fighting	Category 6
2	Rescue equipment	One Helicopter
3	Capability for removal of disabled aircraft	NIL
4	Remarks	NIL

VTUN AD 2.7 SEASONAL AVAILABILITY - CLEARING

1	Types of clearing equipment	NIL
2	Clearance priorities	NIL
3	Remarks	The aerodrome is available all seasons.

VTUN AD 2.8 APRONS, TAXIWAYS AND CHECK LOCATIONS/POSITIONS DATA

1	Apron surface and strength	Surface: Concrete Strength: PCN 50/R/B/W/T
2	Taxiway width, surface and strength	Width: 23 M Surface: Concrete Strength: TWY A: PCN 46/R/B/W/T TWY B: PCN 46/R/B/W/T TWY C: PCN 53/R/B/W/T TWY D: PCN 47/R/B/W/T TWY E: PCN 47/R/B/W/T TWY J: PCN 39/R/B/W/T TWY G: PCN 39/R/B/W/T
3	Altimeter checkpoint location and elevation	Elevation: 221 M (727 FT)
4	VOR checkpoints	NIL
5	INS checkpoints	NIL
6	Remarks	NIL

VTUN AD 2.9 SURFACE MOVEMENT GUIDANCE AND CONTROL SYSTEM AND MARKINGS

1	Use of aircraft stand ID signs, TWY guide lines and visual docking/parking guidance system of aircraft stands	NIL
2	RWY and TWY markings and LGT	RWY and TWY: Marked and lighted
3	Stop bars	NIL
4	Remarks	NIL

VTUN AD 2.10 AERODROME OBSTACLES

In approach/TKOF areas			In circling areas and at AD		Remarks
1			2		
RWY/Area affected	Obstacle type Elevation Markings/LGT	Coordinates	Obstacle type Elevation Markings/LGT	Coordinates	
a	b	c	a	b	
NIL	Radio mast HGT 183 M painted red/white LGTD on top	145610N 1020020E	Radio mast HGT 131 M painted red/white LGTD on top Radio mast HGT 86 M painted red/white LGTD on top	145640N 1020820E 145237N 1020435E	NIL

VTUN AD 2.11 METEOROLOGICAL INFORMATION PROVIDED

1	Associated MET Office	Khorat
2	Hours of service MET Office outside hours	H24
3	Office responsible for TAF preparation Periods of validity	00, 065, 12
4	Type of landing forecast Interval of issuance	Trend 2 HR
5	Briefing/consultation provided	Personal Consultation
6	Flight documentation Language(s) used	English
7	Charts and other information available for briefing or consultation	NIL
8	Supplementary equipment available for providing information	Telefax Self-Briefing Terminal
9	ATS units provided with information	Khorat TWR Khorat APP
10	Additional information (limitation of service, etc.)	NIL

VTUN AD 2.12 RUNWAY PHYSICAL CHARACTERISTICS

Designations RWY NR	TRUE BRG	Dimensions of RWY(M)	Strength (PCN) and surface of RWY and SWY	THR coordinates RWY end coordinates THR geoid undulation	THR elevation and highest elevation of TDZ of precision APP RWY
1	2	3	4	5	6
06	062.5°	3000x45	PCN 59/R/B/W/T Concrete	145541.63N 1020358.39E	222 M/729 FT
24	242.5°	3000x45	PCN 59/R/B/W/T Concrete	145627.20N 1020527.42E	210 M/686 FT

Slope of RWY-SWY	SWY dimensions (M)	CWY dimensions (M)	Strip dimensions (M)	OFZ	Remarks
7	8	9	10	11	12
498%	300x45	NIL	NIL	NIL	NIL
498%	300x45	NIL	NIL	NIL	NIL

VTUN AD 2.13 DECLARED DISTANCES

RWY Designator	TORA (M)	TODA (M)	ASDA (M)	LDA (M)	Remarks
1	2	3	4	5	6
06	3000	3000	3300	3000	NIL
24	3000	3000	3300	3000	NIL

VTUN AD 2.14 APPROACH AND RUNWAY LIGHTING

RWY Designator	APCH LGT type LEN INTST	THR LGT colour WBAR	VASIS (MEHT) PAPI	TDZ, LGT LEN	RWY Centre Line LGT Length, spacing, colour, INTST	RWY edge LGT LEN, spacing, colour INTST	RWY End LGT colour WBAR	SWY LGT LEN (M) colour	Remarks
1	2	3	4	5	6	7	8	9	10
06	SALS 420 M	Green	PAPI Both 3°	NIL	NIL	3000 M 45 M White, LIH	Red	NIL	NIL
24	SALS 420 M	Green	PAPI Both 3.02°	NIL	NIL	3000 M 45 M White, LIH	Red	NIL	NIL

VTUN AD 2.15 OTHER LIGHTING, SECONDARY POWER SUPPLY

1	ABN/IBN location, characteristics and hours of operation	ABN: Alternating white and green lights installed on The top of water tank tower.
2	LDI location and LGT Anemometer location and LGT	NIL
3	TWY edge and centre line lighting	EDGE: ALL TWY
4	Secondary power supply/switch-over time	NIL
5	Remarks	NIL

VTUN AD 2.16 HELICOPTER LANDING AREA

1	Coordinates TLOF or THR of FATO Geoid undulation	NIL
2	TLOF and/or FATO elevation M/FT	NIL
3	TLOF and FATO area dimensions, surface, strength, marking	NIL
4	True and MAG BRG of FATO	NIL
5	Declared distance available	NIL
6	APP and FATO lighting	NIL
7	Remarks	NIL

VTUN AD 2.17 ATS AIRSPACE

1	Designation and lateral limits	A circle of 10 NM radius centred on 1456.1N 10204.8E
2	Vertical limits	3000 FT/AGL
3	Airspace classification	C
4	ATS unit call sign Language(s)	Khorat Tower English, Thai
5	Transition altitude	11000 FT
6	Remarks	NIL

VTUN AD 2.18 ATS COMMUNICATION FACILITIES

Service designation	Call sign	Frequency	Hours of operation	Remarks
1	2	3	4	5
APP	Khorat Approach	349.0 MHZ 129.75 MHZ	H24	Secondary Operation
ASR	Khorat Arrival	349.0 MHZ 129.75 MHZ	0100-0900 weekdays MON-FRI (Except public holiday or on request 1 HR prior notice required to ATC)	Radar Approach Primary Operation during weekdays.
ASR	Khorat Departure	285.0 MHZ 134.1 MHZ		
SRA	Final Controller	382.4 MHZ		
TWR	Khorat Tower	240.5 MHZ 122.2 MHZ *121.5 MHZ *243.0 MHZ	H24	*Emergency Freq.
GND	Khorat Ground	257.8 MHZ 121.75 MHZ		
ATIS	Khorat AD	134.8 MHZ 390.6 MHZ	2300-1100	

VTUN AD 2.19 RADIO NAVIGATION AND LANDING AIDS

Type of aid, MAG VAR CAT of ILS/MLS (For VOR/ILS/MLS, give declination)	ID	Frequency	Hours of operation	Position of transmitting antenna coordinates	Elevation of DME transmitting antenna	Remarks
1	2	3	4	5	6	7
TACAN	KRT	CH125X	2300-1100	145606.0N 1020421.8E	NIL	315 M (Centre line of RWY)
DVOR/DME	KRT	113.7 MHZ CH84X	H24	145502.35N 1020823.32E		DVOR/DME restriction due to mountainous terrain surround DVOR/DME station, coverage check does not provide adequate signal clockwise orbit 40 NM at required altitude in various areas as follows: <ul style="list-style-type: none"> - Radial 081°-280° altitude should not below 5 000 FT - Radial 281°-080° altitude should not below 3 500 FT
ILS (CAT I) LOC GP/DME	IKRT	109.9 MHZ CH36X	MON-FRI 2300-1100	145535.31N 1020346.04E		PAPI, runway 24 not coincident with ILS gild slope starting from 0.8 DME or 900 ft (MSL)
GP		333.8 MHZ	MON-FRI 2300-1100	145620.02N 1020522.05E		Military used and/or civil aircraft used in military services only
LLZ		109.9 MHZ CH36X	MON-FRI 2300-1100	145533.78N 1020346.80E		

VTUN AD 2.20 LOCAL AERODROME REGULATIONS

1. VFR REPORTING POINTS AND LOCAL PROCEDURES

Reporting points for VFR flight

In order to expedite and maintain an orderly flow of air traffic into Khorat Airport, the procedures of inbound traffic for VFR flight, conventional and prop-jet aircraft be set up as follows:

- a) Aircraft entering to land from R-271 – R-090 of Khorat Airport, shall report over Ban Khok Sung District, designated as NOVEMBER (1503.9N10200.1E) which is approximately 8 NM on R-355 of KRT TACAN. When reaching NOVEMBER the aircraft will be instructed to join aerodrome traffic circuit accordingly.
- b) Aircraft entering to land from R-091 – R-270 of Khorat Airport, shall report over Ban Nong kok Chai District, designated as SIERRA (1446.0N10205.0E) which is approximately 10 NM on R-180 of KRT TACN. When reaching SIERRA the aircraft will be instructed to join aerodrome traffic circuit accordingly.

VTUN AD 2.21 NOISE ABATEMENT PROCEDURES

NIL

VTUN AD 2.22 FLIGHT PROCEDURES

NIL

VTUN AD 2.23 ADDITIONAL INFORMATION

- Runway 06/24 RAG installed details as follows:

BAK14: 1,415 FT from threshold runway 06 / 1,252 FT from threshold runway 24 Operating cable height above runway 3 inches.

NET BARRIER: 115 FT from threshold into overrun runway 06 / 82 FT from threshold into overrun runway 24 height 3.70 M.

VTUN AD 2.24 CHARTS RELATED TO AN AERODROME

Chart name	Page
Instrument Approach Chart - ICAO - ILS or LOC RWY 24	AD 2-VTUN-8-1
Instrument Approach Chart - ICAO - ILS or LOC RWY 24 (Fix and point list table)	AD 2-VTUN-8-2

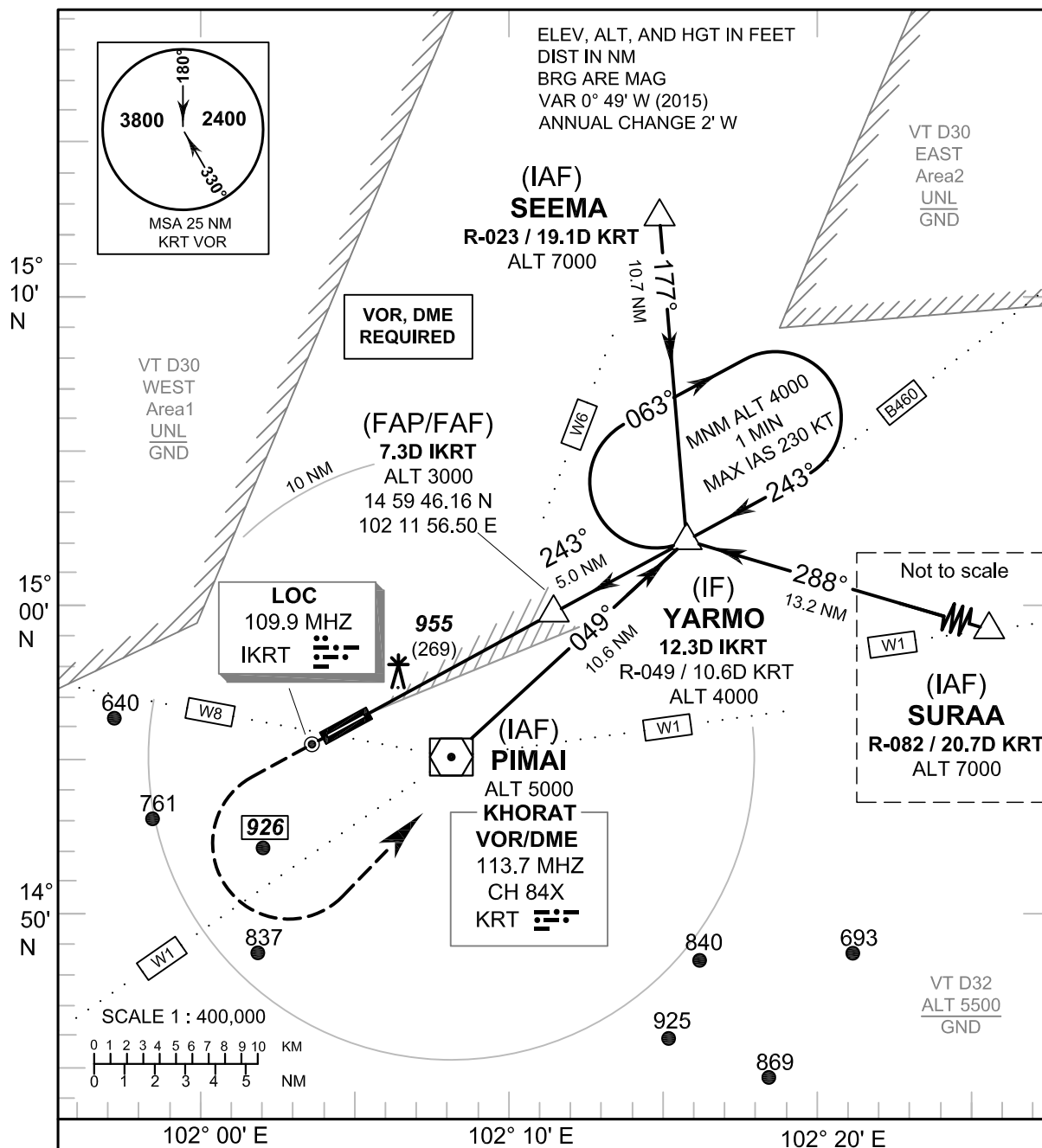
INTENTIONALLY BLANK

INTENTIONALLY BLANK

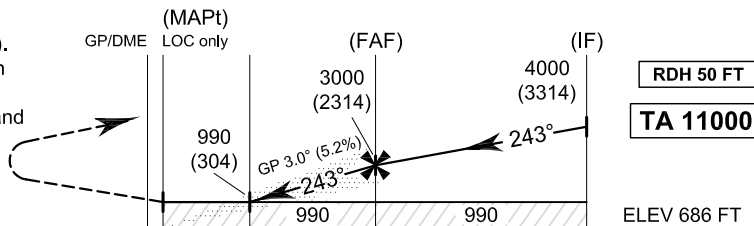
INSTRUMENT AERODROME ELEV 729 FT
APPROACH HEIGHTS RELATED TO
CHART - ICAO THR RWY24 - ELEV 686 FT

APP : 129.75, 349.0
 TWR : 122.2, 240.5
 GND : 121.75, 257.8
 ATIS : 390.6

NAKHON RATCHASIMA /
Khorat (VTUN)
ILS or LOC RWY24



Missed Approach :
No turn before MAPt (for LOC only).
 Climb straight ahead to 2600 FT, then turn left to intercept R-049 KRT VOR and proceed to YARMO at 4000 FT and hold or as directed by ATC.



DME FM GP/DME 0 0.2 1.0 7.3 12.3 (THR RWY24)
 NM FM THR 0 0.8 7.1 12.1

CHANGE: DME REVISED.

OCA/H		A	B	C	D	GS OUT	Distance (IKRT)	1 D	2 D	3 D	4 D	5 D	6 D	FAF
Straight-in Approach	CAT I	900 (214)						Altitude (Height)	990 (304)	1305 (619)	1620 (934)	1935 (1249)	2255 (1569)	2570 (1884)
		LOC only		990 (304)			Ground Speed	knot	70	90	100	120	140	160
Circling (OCH AAL)		1400 (671)	1700 (971)			Rate of Descent 3.0°	ft/min	372	478	531	637	743	849	

MILITARY USE ONLY

**INSTRUMENT
APPROACH
CHART - ICAO**

**AERODROME ELEV 729 FT
HEIGHTS RELATED TO
THR RWY24 - ELEV 686 FT**

**NAKHON RATCHASIMA /
Khorat (VTUN)
ILS or LOC RWY24**

Fix / Point		Coordinates	
(IAF) PIMAI	KRT	14° 55' 02.35" N	102° 08' 23.32" E
(IAF) SEEMA	R-023 / 19.1 D KRT	15° 12' 50.38" N	102° 15' 45.08" E
(IAF) SURAA	R-082 / 20.7 D KRT	14° 58' 09.11" N	102° 29' 32.61" E
(IF) YARMO	12.3D IKRT	15° 02' 06.14" N	102° 16' 30.61" E
(FAP/FAF)	7.3D IKRT	14° 59' 46.16" N	102° 11' 56.50" E
MAPt (LOC only) @ THR RWY24	0.2D IKRT	14° 56' 27.20" N	102° 05' 27.42" E
LOC	IKRT	14° 55' 35.31" N	102° 03' 46.04" E
GP/DME	IKRT	14° 56' 20.02" N	102° 05' 22.05" E
VOR	KRT	14° 55' 02.35" N	102° 08' 23.32" E

CHANGE: DME REVISED.

MILITARY USE ONLY