

VTUK AD 2.1 AERODROME LOCATION INDICATOR AND NAME

VTUK - KHON KAEN / KHON KAEN AIRPORT

VTUK AD 2.2 AERODROME GEOGRAPHICAL AND ADMINISTRATIVE DATA

1	ARP coordinates and site at AD	162759.86N 1024701.26E
2	Direction and distance from (city)	APRX 8 KM SE from the city
3	Elevation/Reference temperature	681 FT/37°C
4	Geoid Undulation at AD ELEV PSN	-99 FT
5	MAG VAR/Annual change	1.10°W(2022)/0.05°W
5	AD Administration, address, telephone, telefax, telex, AFS	Director of Khon Kaen Airport Khon Kaen Airport 68/24 Moo 5, Tambon Banped Amphoe Muang Khon Kaen Province 40000, Thailand Tel: +664 346 8170-5 Fax: +664 346 8186 AFS: VTUKYDYX
6	Types of traffic permitted (IFR/VFR)	IFR/VFR
7	Remarks	Operator: Department of Airports

VTUK AD 2.3 OPERATIONAL HOURS

1	Aerodrome Operator	2300-1500
2	Customs and immigration	2300-1500 Other than this period on request
3	Health and sanitation	2300-1500 Other than this period on request
4	AIS Briefing Office	NIL
5	ATS Reporting Office (ARO)	2300-1500
6	MET Briefing Office	NIL
7	ATS	2300-1500
8	Fuelling	2400-1300 Other than this period on request
9	Handling	NIL
10	Security	NIL
11	De-icing	NIL
12	Remarks	ATS Reporting Office (ARO): Located at Udon Thani Air Traffic Control Centre (1st floor of tower building) Tel: +664 223 0124 +669 2262 3477 Fax: +664 224 2797

VTUK AD 2.4 HANDLING SERVICES AND FACILITIES

1	Cargo-handling facilities	NIL
2	Fuel/oil types	JET A-1
3	Fuelling facilities/capacity	1 JET A-1 Refueller @ 12,000 L 1 JET A-1 Refueller @ 8,000 L 1 AVGAS Refueller @ 3,000 L
4	De-icing facilities	NIL
5	Hangar space for visiting aircraft	NIL
6	Repair facilities for visiting aircraft	NIL
7	Remarks	NIL

VTUK AD 2.5 PASSENGER FACILITIES

1	Hotels	In the city
2	Restaurants	Available at the airport and in the city
3	Transportation	Taxi and Car Rental and Bus
4	Medical facilities	NIL
5	Bank and Post Office	Bank: open from 0030-1300 Post office: open from 0330-1330
6	Tourist Office	NIL
7	Remarks	NIL

VTUK AD 2.6 RESCUE AND FIRE FIGHTING SERVICES

1	AD category for fire fighting	Category 8
2	Rescue equipment	Yes
3	Capability for removal of disabled aircraft	NIL
4	Remarks	NIL

VTUK AD 2.7 SEASONAL AVAILABILITY - CLEARING

1	Types of clearing equipment	NIL
2	Clearance priorities	NIL
3	Remarks	The aerodrome is available all seasons.

VTUK AD 2.8 APRONS, TAXIWAYS AND CHECK LOCATIONS/POSITIONS DATA

1	Apron surface and strength	Surface: Concrete Strength: PCN 65/R/C/X/T
2	Taxiway width, surface and strength	Width: 23 M Surface: Asphaltic concrete Strength: PCN 65/F/C/X/T
3	Altimeter checkpoint location and elevation	NIL
4	VOR checkpoints	NIL
5	INS checkpoints	NIL
6	Remarks	NIL

VTUK AD 2.9 SURFACE MOVEMENT GUIDANCE AND CONTROL SYSTEM AND MARKINGS

1	Use of aircraft stand ID signs, TWY guide lines and visual docking/parking guidance system of aircraft stands	Aircraft stand ID signs: Marked TWY guide lines: Yes Nose-wheel guide lines at apron VDGS of aircraft stand: Stand number 2 and 3
2	RWY and TWY markings and LGT	RWY marking: RWY Designation, THR, TDZ, RCL, Aiming Point and Side Stripe RWY LGT: THR, RWY Edge and RWY End TWY marking: CL, Edge and RWY Holding Position TWY LGT: TWY Edge
3	Stop bars	NIL
4	Remarks	NIL

VTUK AD 2.10 AERODROME OBSTACLES

In approach/TKOF areas			In circling areas and at AD		Remarks
1			2		3
RWY/Area affected	Obstacle type Elevation Markings/LGT	Coordinates	Obstacle type Elevation Markings/LGT	Coordinates	
a	b	c	a	b	
NIL	NIL	NIL	NIL	NIL	NIL

VTUK AD 2.11 METEOROLOGICAL INFORMATION PROVIDED

1	Associated MET Office	Upper Northeastern Meteorological Center, Thai Meteorological Department (TMD)
2	Hours of service MET Office outside hours	H24 NIL
3	Office responsible for TAF preparation Periods of validity	Upper Northeastern Meteorological Center 24 HR
4	Type of landing forecast Interval of issuance	TREND 1 HR
5	Briefing/consultation provided	Personal Consultation Tel: +664 346 8224 Fax: +664 346 8086
6	Flight documentation Language(s) used	Charts, Tabular forms and Abbreviated Plain Language Texts English
7	Charts and other information available for briefing or consultation	S, U85, U70, U50, U40, U30, U25, U20, SWH, SWM, SWL, P85, P70, P50, P40, P30, P25, P20, P15, satellite and radar images
8	Supplementary equipment available for providing information	Automated Weather Observation System (AWOS), Low Level Wind Shear Alert System (LLWAS) and Weather Radar
9	ATS units provided with information	Khon Kaen TWR
10	Additional information (limitation of service, etc.)	NIL

VTUK AD 2.12 RUNWAY PHYSICAL CHARACTERISTICS

Designations RWY NR	TRUE BRG	Dimensions of RWY(M)	Strength (PCN) and surface of RWY and SWY	THR coordinates RWY end coordinates THR geoid undulation	THR elevation and highest elevation of TDZ of precision APP RWY
1	2	3	4	5	6
03	032.83°	3050x45	PCN 65/F/C/X/T Asphaltic concrete	162722.22N 1024636.09E -99 FT	THR 604 FT
21	212.83°	3050x45	PCN 65/F/C/X/T Asphaltic concrete	162837.47N 1024726.40E -99 FT	THR 674 FT

Slope of RWY-SWY	SWY dimensions (M)	CWY dimensions (M)	Strip dimensions (M)	RESA dimensions (M)	Location and description of arresting system	OFZ	Remarks
7	8	9	10	11	12	13	14
+0.80%	NIL	NIL	3170x280	NIL	NIL	NIL	THR displaced by 150 M
-0.60%	NIL	NIL	3170x280	NIL	NIL	NIL	THR displaced by 150 M

VTUK AD 2.13 DECLARED DISTANCES

RWY Designator	TORA (M)	TODA (M)	ASDA (M)	LDA (M)	Remarks
1	2	3	4	5	6
03	3050	3050	3050	2900	THR displaced by 150 M
21	3050	3050	3050	2900	THR displaced by 150 M

VTUK AD 2.14 APPROACH AND RUNWAY LIGHTING

RWY Designator	APCH LGT type LEN INTST	THR LGT colour WBAR	VASIS (MEHT) PAPI	TDZ, LGT LEN	RWY Centre Line LGT Length, spacing, colour, INTST	RWY edge LGT LEN, spacing, colour INTST	RWY End LGT colour WBAR	SWY LGT LEN (M) colour	Remarks
1	2	3	4	5	6	7	8	9	10
03	RTIL	Green WBAR	PAPI Left 3°	NIL	NIL	3050 M 60 M White, LIH	Red	NIL	NIL
21	RTIL	Green WBAR	PAPI Left 3°	NIL	NIL	3050 M 60 M White, LIH	Red	NIL	NIL

VTUK AD 2.15 OTHER LIGHTING, SECONDARY POWER SUPPLY

1	ABN/IBN location, characteristics and hours of operation	ABN: At Tower Building, FLG W G EV 7 SEC IBN: NIL
2	LDI location and LGT Anemometer location and LGT	LDI: NIL Anemometer: NIL
3	TWY edge and centre line lighting	TWY Edge: All TWY TWY Centre Line: NIL

4	Secondary power supply/switch-over time	Secondary power supply to all lighting at the Air Field Lighting (AFL) building. Switch-over time: 15 SEC
5	Remarks	Flares 2 HR PN

VTUK AD 2.16 HELICOPTER LANDING AREA

1	Coordinates TLOF or THR of FATO Geoid undulation	NIL
2	TLOF and/or FATO elevation M/FT	NIL
3	TLOF and FATO area dimensions, surface, strength, marking	NIL
4	True and MAG BRG of FATO	NIL
5	Declared distance available	NIL
6	APP and FATO lighting	NIL
7	Remarks	NIL

VTUK AD 2.17 ATS AIRSPACE

1	Designation and lateral limits	A circle of 5 NM radius centred on KKN DVOR/DME (162814.73N1024716.07E)
2	Vertical limits	2000 FT/AGL
3	Airspace classification	C
4	ATS unit call sign Language(s)	KHON KAEN TOWER English, Thai
5	Transition altitude	11000 FT
6	Remarks	NIL

VTUK AD 2.18 ATS COMMUNICATION FACILITIES

Service designation	Call sign	Frequency	Hours of operation	Remarks
1	2	3	4	5
APP	Khon Kaen Approach	123.4 MHZ 240.0 MHZ 121.5 MHZ ¹⁾	As AD OPR HR	¹⁾ Emergency frequency
TWR	Khon Kaen Tower	122.25 MHZ 236.6 MHZ 121.5 MHZ ¹⁾	As AD OPR HR	
GND	Khon Kaen Ground	121.9 MHZ	As AD OPR HR	
ATIS	Khon Kaen Airport	126.85 MHZ	As AD OPR HR	

VTUK AD 2.19 RADIO NAVIGATION AND LANDING AIDS

Type of aid, MAG VAR CAT of ILS/MLS (For VOR/ILS/MLS, give declination)	ID	Frequency	Hours of operation	Position of transmitting antenna coordinates	Elevation of DME transmitting antenna	Remarks
1	2	3	4	5	6	7
NDB	KN	393 KHZ	H24	162743.41N 1024704.18E	NIL	NIL
DVOR/DME	KKN	114.9 MHZ CH96X	H24	162814.73N 1024716.07E	NIL	DVOR/DME restriction due to terrain surround DVOR/DME station, coverage check does not provide adequate signal 40 NM at required altitude in various areas as follows: <ul style="list-style-type: none"> - Radial 001°-080° altitude should not below 2 500 FT - Radial 081°-220° altitude should not below 2 000 FT - Radial 221°-360° altitude should not below 3 500 FT

VTUK AD 2.20 LOCAL AERODROME REGULATIONS

1. 180 DEGREES TURN ON THE RUNWAY

To prevent runway pavement damage which may result in the closure of the aerodrome if such damage is severe, aircraft code letter C or higher shall make 180 degrees turn at the runway turn pads located on both end of runway. Any breach done by the aircraft operator shall be recorded and reported to The Civil Aviation Authority of Thailand (CAAT)/ The Headquarter of that operator shall be liable for the compensation caused by such violation.

VTUK AD 2.21 NOISE ABATEMENT PROCEDURES

NIL

VTUK AD 2.22 FLIGHT PROCEDURES

1. VFR Procedures

Details of VFR entry and exit procedures, see charts.

2. Take-off and Landing when VTD65 Active

During military air exercise taking place on exercise area Nam Phong Range (VTD65), all aircraft departing/arriving VTUK shall comply with the following instructions:

- a) Pilot might be requested to take-off RWY 21 and landing RWY 03.
- b) If unable to comply with RWY restriction, pilot shall inform ATC immediately and expect delay.

3. IFR DEPARTURES OTHER THAN VIA SID

IFR departure procedures described below are determined for the purpose of case when an instrument departure via SID is impossible or undesirable.

4. VISUAL DEPARTURES

Visual departures during take-off and initial climb-out are permitted during the daytime and Visual Meteorological Conditions (VMC). ATC clearance to execute a visual departure may be issued upon request of the pilot or upon initiative of the ATC and accepted by the pilot.

To execute a visual departure

- meteorological conditions in the direction of take-off and the following climb-out shall enable visual reference to terrain up to Minimum Sector Altitude (MSA) or Minimum Flight Altitude (MFA) stated in ATC clearance,
- the pilot shall be responsible for obstacle clearance until such specified altitude,
- the pilot prior to take-off shall agree to execute this procedure,
- the ATC clearance shall be readback,

5. OMNIDIRECTIONAL DEPARTURES

Omnidirectional departures during take-off and initial climb-out are permitted during the day and night. ATC clearance to execute an omnidirectional departure may be issued upon request of the pilot or upon initiative of the ATC and accepted by the pilot.

To execute an omnidirectional departure:

- the pilot shall be maintaining a minimum climb gradient up to specific altitude as published shown as below,
- the pilot shall be responsible for adherence to such obtained ATC clearance,
- the pilot prior to take-off shall agree to execute this procedure,
- The ATC clearance shall be readback,

- Runway 03:

KHONKAEN OMNI 03 Departure: Required climb gradient 201 ft per NM (3.3%) until 3,400 ft.

Ground speed	Knot	65	75	100	150	200	250	300
Rate of climb 3.3%	(ft/min)	217	251	334	501	668	835	1003

No turn before DER.

After departure climb straight ahead until 1,500 ft (or altitude assigned by ATC between 1,500 ft - 3,000 ft), then comply with ATC clearance issued (or as directed by ATC).

- Runway 21:

KHONKAEN OMNI 21 Departure: Required climb gradient 201 ft per NM (3.3%) until 3,400 ft.

Ground speed	Knot	65	75	100	150	200	250	300
Rate of climb 3.3%	(ft/min)	217	251	334	501	668	835	1003

No turn before DER.

After departure climb straight ahead until 1,500 ft (or altitude assigned by ATC between 1,500 ft - 3,000 ft), then comply with ATC clearance issued (or as directed by ATC).

VTUK AD 2.23 ADDITIONAL INFORMATION

1. BIRD CONCENTRATIONS

Bird concentrations in the vicinity of an aerodrome.

VTUK AD 2.24 CHARTS RELATED TO AN AERODROME

Chart name	Page
Aerodrome Chart - ICAO	AD 2-VTUK-2-1
Aircraft Parking/Docking Chart - ICAO	AD 2-VTUK-2-3
Standard Departure Chart - Instrument (SID) - ICAO - RNAV RWY 03 - AKRET1A ALGIT1A EMRUT1A NEMTE1A ONUVI1A SEDNO1C	AD 2-VTUK-6-1
Standard Departure Chart - Instrument (SID) - ICAO - RNAV RWY 03 - AKRET1A ALGIT1A EMRUT1A NEMTE1A ONUVI1A SEDNO1C (Tabular description)	AD 2-VTUK-6-2
Standard Departure Chart - Instrument (SID) - ICAO - RNAV RWY 03 - AKRET1A ALGIT1A EMRUT1A NEMTE1A ONUVI1A SEDNO1C (Waypoint list table)	AD 2-VTUK-6-3
Standard Departure Chart - Instrument (SID) - ICAO - RNAV RWY 21 - AKRET1B ALGIT1B EMRUT1B NEMTE1B ONUVI1B SEDNO1D	AD 2-VTUK-6-5
Standard Departure Chart - Instrument (SID) - ICAO - RNAV RWY 21 - AKRET1B ALGIT1B EMRUT1B NEMTE1B ONUVI1B SEDNO1D (Tabular description)	AD 2-VTUK-6-6
Standard Departure Chart - Instrument (SID) - ICAO - RNAV RWY 21 - AKRET1B ALGIT1B EMRUT1B NEMTE1B ONUVI1B SEDNO1D (Waypoint list table)	AD 2-VTUK-6-7
Instrument Approach Chart - ICAO - NDB z RWY 03	AD 2-VTUK-8-1
Instrument Approach Chart - ICAO - NDB RWY 21	AD 2-VTUK-8-3
Instrument Approach Chart - ICAO - VOR RWY 03	AD 2-VTUK-8-5
Instrument Approach Chart - ICAO - VOR RWY 03 (Fix and point list table)	AD 2-VTUK-8-6
Instrument Approach Chart - ICAO - VOR RWY 21	AD 2-VTUK-8-7
Instrument Approach Chart - ICAO - VOR RWY 21 (Fix and point list table)	AD 2-VTUK-8-8
Instrument Approach Chart - ICAO - RNP RWY 03	AD 2-VTUK-8-9
Instrument Approach Chart - ICAO - RNP RWY 03 (Tabular description)	AD 2-VTUK-8-10
Instrument Approach Chart - ICAO - RNP RWY 03 (Waypoint list table)	AD 2-VTUK-8-11
Instrument Approach Chart - ICAO - RNP RWY 21	AD 2-VTUK-8-13
Instrument Approach Chart - ICAO - RNP RWY 21 (Tabular description)	AD 2-VTUK-8-14
Instrument Approach Chart - ICAO - RNP RWY 21 (Waypoint list table)	AD 2-VTUK-8-15
VFR ENTRY PROCEDURE CHART - RWY 03/21 (NORTH)	AD 2-VTUK-9-1
VFR ENTRY PROCEDURE CHART - RWY 03/21 (NORTH) (Tabular description)	AD 2-VTUK-9-2
VFR ENTRY PROCEDURE CHART - RWY 03/21 (SOUTH)	AD 2-VTUK-9-3
VFR ENTRY PROCEDURE CHART - RWY 03/21 (SOUTH) (Tabular description)	AD 2-VTUK-9-4
VFR EXIT PROCEDURE CHART - RWY 03 (NORTH)	AD 2-VTUK-9-5
VFR EXIT PROCEDURE CHART - RWY 03 (NORTH) (Tabular description)	AD 2-VTUK-9-6
VFR EXIT PROCEDURE CHART - RWY 03 (SOUTH)	AD 2-VTUK-9-7
VFR EXIT PROCEDURE CHART - RWY 03 (SOUTH) (Tabular description)	AD 2-VTUK-9-8
VFR EXIT PROCEDURE CHART - RWY 21 (NORTH)	AD 2-VTUK-9-9
VFR EXIT PROCEDURE CHART - RWY 21 (NORTH) (Tabular description)	AD 2-VTUK-9-10
VFR EXIT PROCEDURE CHART - RWY 21 (SOUTH)	AD 2-VTUK-9-11
VFR EXIT PROCEDURE CHART - RWY 21 (SOUTH) (Tabular description)	AD 2-VTUK-9-12

AERODROME CHART - ICAO

**16 27 59.86N
102 47 01.26E**

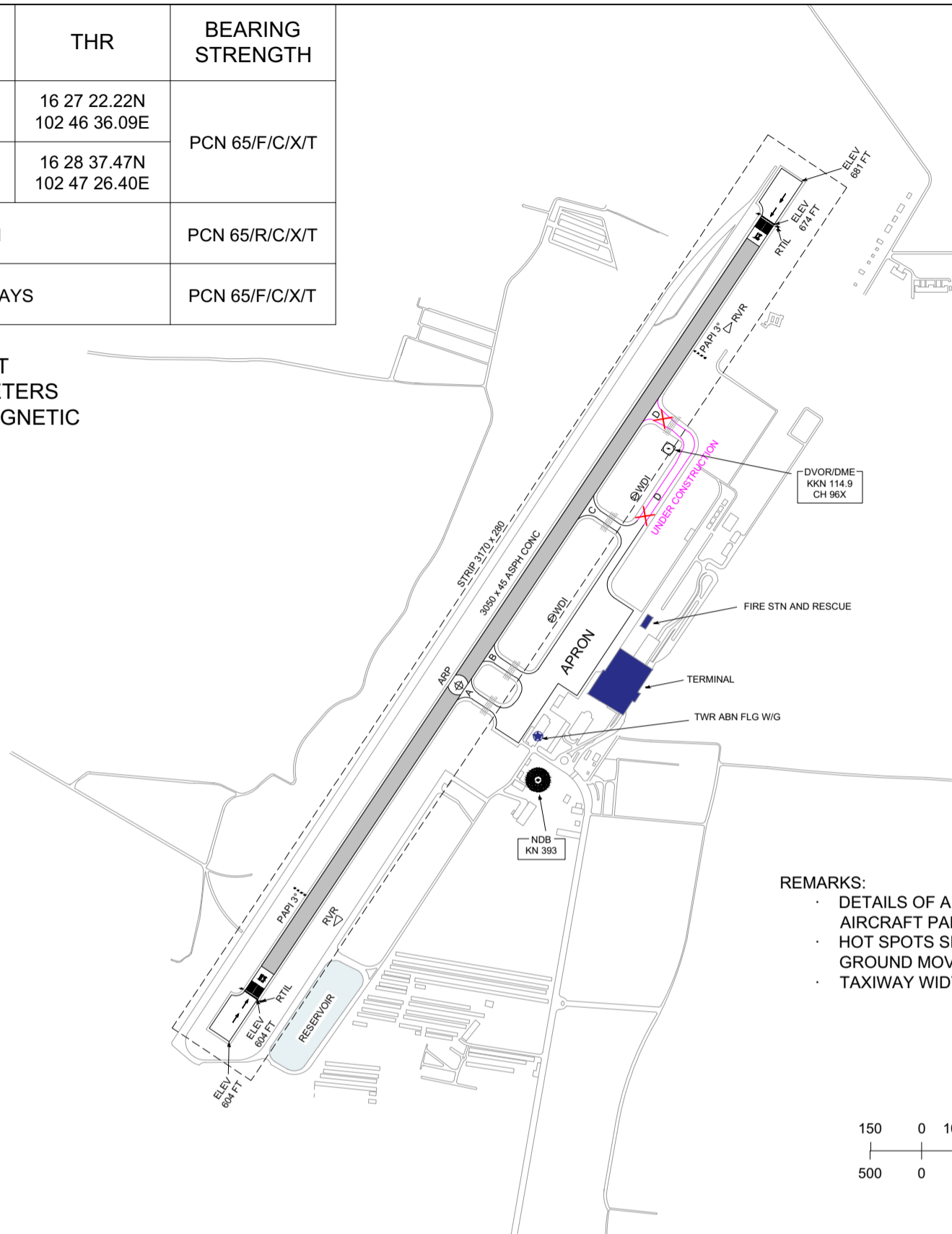
ELEV 681 FT

**TWR 122.25, 236.6
GND 121.9**

KHON KAEN / Khon Kaen

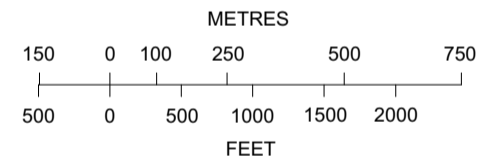
RWY	DIRECTION (TRUE BRG)	THR	BEARING STRENGTH
03	032.83°	16 27 22.22N 102 46 36.09E	PCN 65/F/C/X/T
21	212.83°	16 28 37.47N 102 47 26.40E	
APRON			PCN 65/R/C/X/T
ALL TAXIWAYS			PCN 65/F/C/X/T

ELEVATION IN FEET
DIMENSIONS IN METERS
BEARINGS ARE MAGNETIC

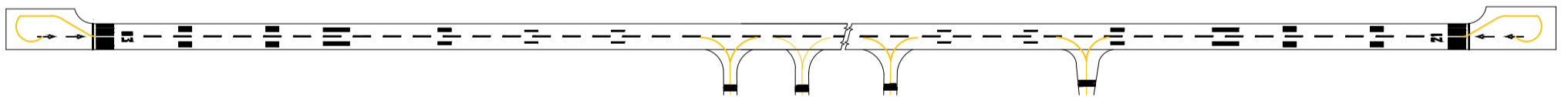


REMARKS:

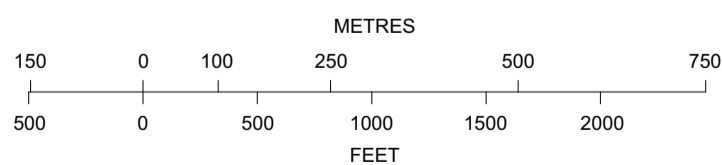
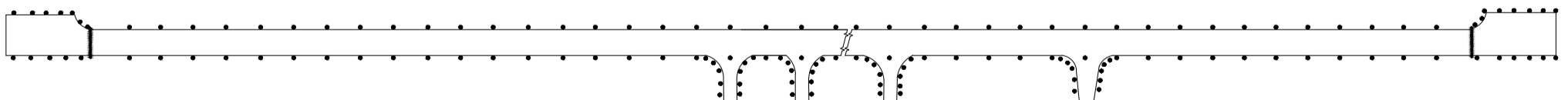
- DETAILS OF AIRCRAFT STANDS ARE SHOWN IN AIRCRAFT PARKING/DOCKING CHART
- HOT SPOTS SHOWN IN AERODROME GROUND MOVEMENT CHART
- TAXIWAY WIDTH 23 m.



MARKING AIDS RWY 03/21 AND EXIT TWY



LIGHTING AIDS RWY 03/21 AND EXIT TWY



CHANGE: REVISED CHART. MAG VAR. ANNUAL RATE OF CHANGE. RWY COORDINATES. AD AND THR ELEV.

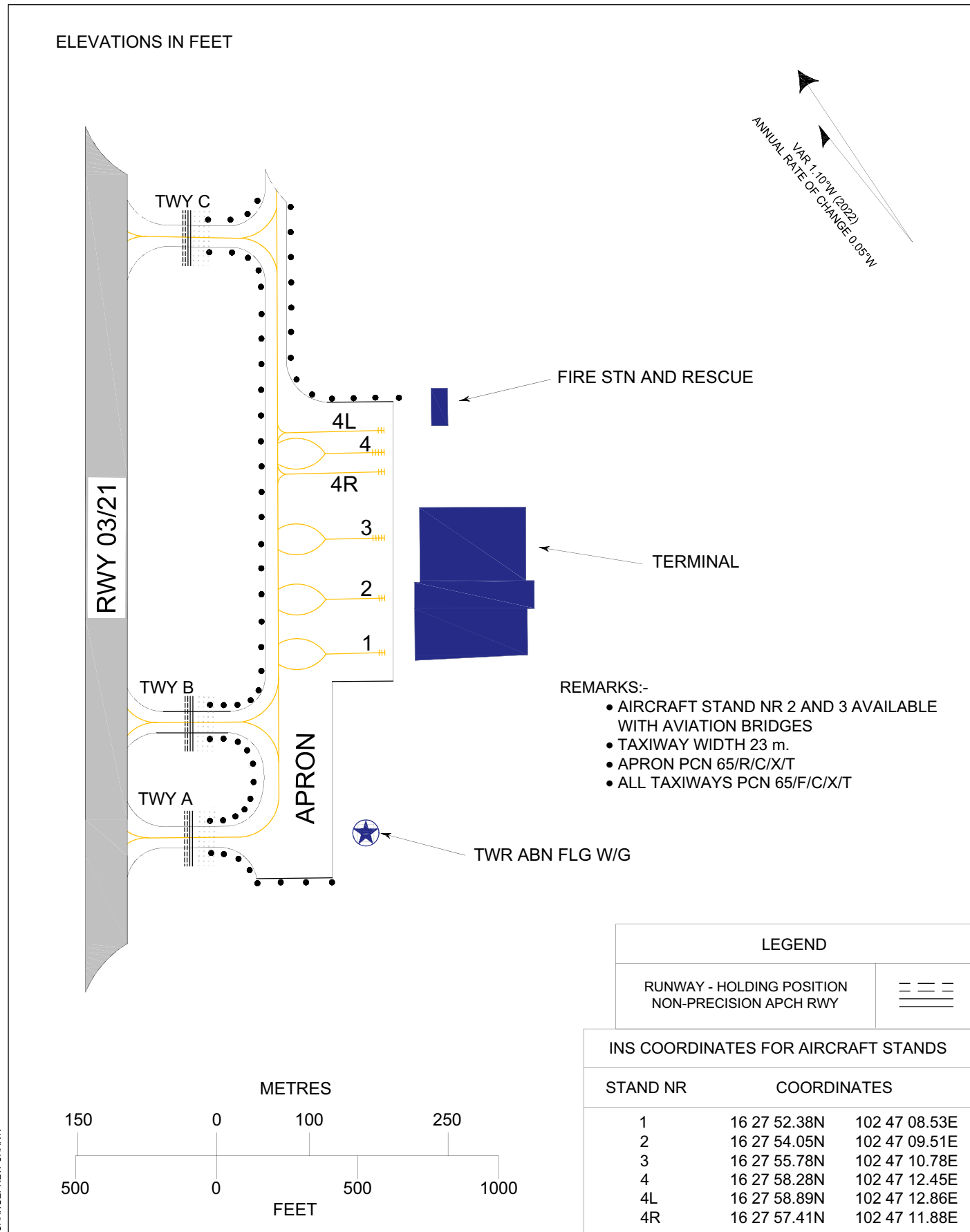
INTENTIONALLY BLANK

**AIRCRAFT PARKING/
DOCKING CHART - ICAO**

**APRON ELEV
638 FT**

**TWR 122.25, 236.6
GND 121.9**

KHON KAEN / Khon Kaen



INTENTIONALLY BLANK

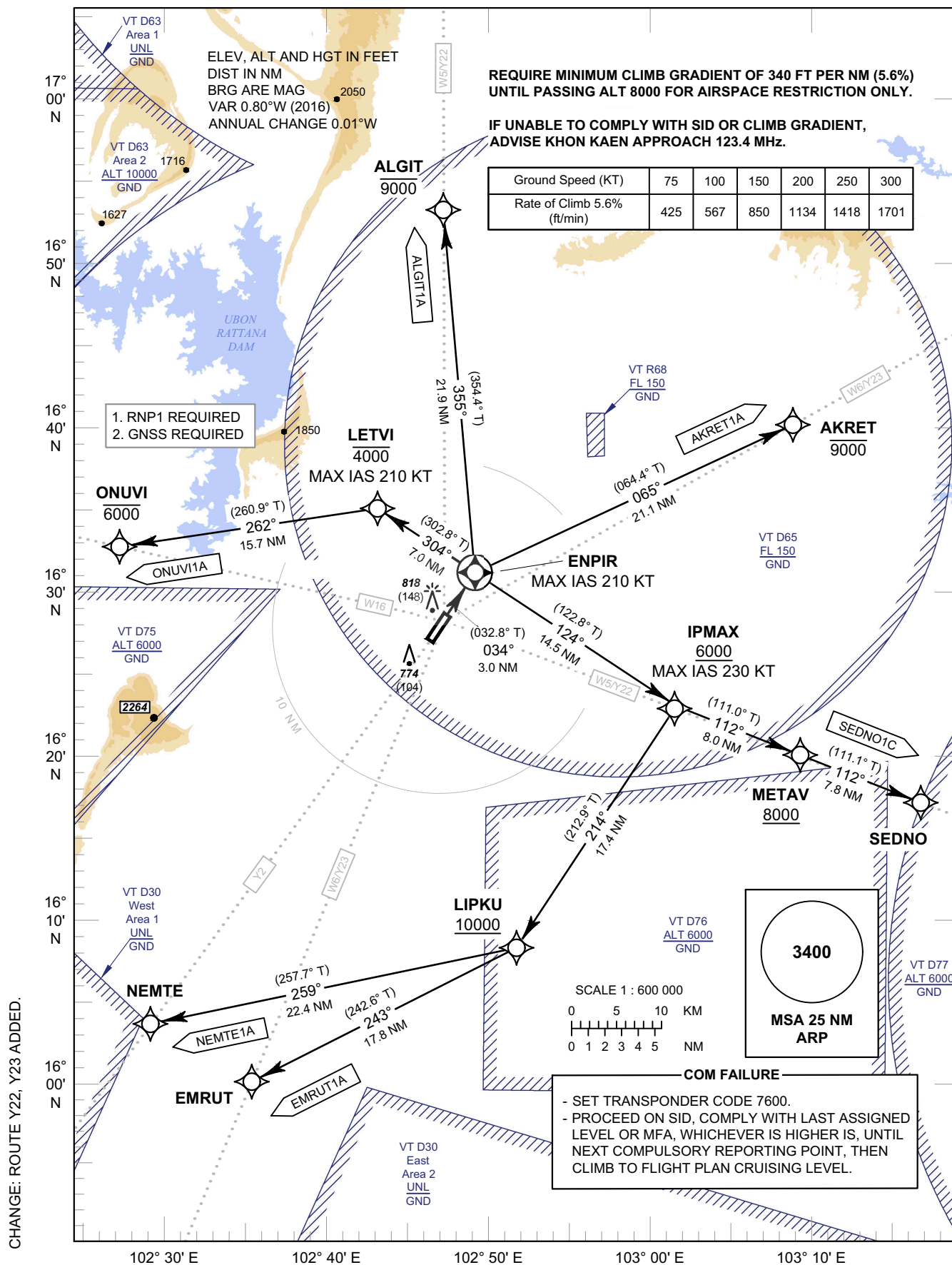
**STANDARD DEPARTURE CHART -
INSTRUMENT (SID) - ICAO**

TRANSITION ALTITUDE
11000 FT

APP : 123.4 , 240.0
TWR : 122.25 , 236.6
GND : 121.9
ATIS : 126.85

**KHON KAEN /
Khon Kaen (VTUK)**
RNAV RWY03

AKRET1A ALGIT1A EMRUT1A
NEMTE1A ONUVI1A SEDNO1C



STANDARD DEPARTURE CHART -
INSTRUMENT (SID) - ICAO

KHON KAEN /
Khon Kaen (VTUK)

RNAV RWY03

AKRET1A ALGIT1A EMRUT1A
NEMTE1A ONUVI1A SEDNO1C

TABULAR DESCRIPTION

RNAV RWY03											
Serial Number	Path Descriptor	Waypoint Identifier	Flyover	Course ° M (° T)	Magnetic Variation	Distance (NM)	Turn Direction	Altitude (FT)	Speed (KT)	VPA/TCH	Navigation Specification
ALGIT1A											
010	-	DER RWY03	-	-	+0.84	-	-	-	-	-	RNP1
020	CF	ENPIR	Y	034°(032.8°)	+0.84	3.0	-	-	-210	-	RNP1
030	TF	ALGIT	-	355°(354.4°)	+0.84	21.9	-	-9000	-	-	RNP1
AKRET1A											
010	-	DER RWY03	-	-	+0.84	-	-	-	-	-	RNP1
020	CF	ENPIR	Y	034°(032.8°)	+0.84	3.0	-	-	-210	-	RNP1
030	TF	AKRET	-	065°(064.4°)	+0.84	21.1	-	-9000	-	-	RNP1
EMRUT1A											
010	-	DER RWY03	-	-	+0.84	-	-	-	-	-	RNP1
020	CF	ENPIR	Y	034°(032.8°)	+0.84	3.0	R	-	-210	-	RNP1
030	TF	IPMAX	-	124°(122.8°)	+0.84	14.5	R	+6000	-230	-	RNP1
040	TF	LIPKU	-	214°(212.9°)	+0.84	17.4	R	+10000	-	-	RNP1
050	TF	EMRUT	-	243°(242.6°)	+0.84	17.8	-	-	-	-	RNP1
NEMTE1A											
010	-	DER RWY03	-	-	+0.84	-	-	-	-	-	RNP1
020	CF	ENPIR	Y	034°(032.8°)	+0.84	3.0	R	-	-210	-	RNP1
030	TF	IPMAX	-	124°(122.8°)	+0.84	14.5	R	+6000	-230	-	RNP1
040	TF	LIPKU	-	214°(212.9°)	+0.84	17.4	R	+10000	-	-	RNP1
050	TF	NEMTE	-	259°(257.7°)	+0.84	22.4	-	-	-	-	RNP1
SEDNO1C											
010	-	DER RWY03	-	-	+0.84	-	-	-	-	-	RNP1
020	CF	ENPIR	Y	034°(032.8°)	+0.84	3.0	-	-	-210	-	RNP1
030	TF	IPMAX	-	124°(122.8°)	+0.84	14.5	-	+6000	-230	-	RNP1
040	TF	METAV	-	112°(111.0°)	+0.84	8.0	-	+8000	-	-	RNP1
050	TF	SEDNO	-	112°(111.1°)	+0.84	7.8	-	-	-	-	RNP1
ONUVI1A											
010	-	DER RWY03	-	-	+0.84	-	-	-	-	-	RNP1
020	CF	ENPIR	Y	034°(032.8°)	+0.84	3.0	-	-	-210	-	RNP1
030	TF	LETVI	-	304°(302.8°)	+0.84	7.0	-	-4000	-210	-	RNP1
040	TF	ONUVI	-	262°(260.9°)	+0.84	15.7	-	-6000	-	-	RNP1

CHANGE: REVISED CHART.

**STANDARD DEPARTURE CHART -
INSTRUMENT (SID) - ICAO**

**KHON KAEN /
Khon Kaen (VTUK)**

RNAV RWY03

AKRET1A ALGIT1A EMRUT1A
NEMTE1A ONUVI1A SEDNO1C

WAYPOINT LIST

RNAV RWY03	
Waypoint Identifier	Coordinates
DER RWY03	16° 28' 37.46" N 102° 47' 26.33" E
AKRET	16° 40' 16.00" N 103° 08' 55.51" E
ALGIT	16° 52' 59.94" N 102° 46' 54.83" E
EMRUT	16° 00' 19.64" N 102° 35' 33.26" E
ENPIR	16° 31' 09.32" N 102° 49' 07.92" E
IPMAX	16° 23' 15.12" N 103° 01' 48.22" E
LETVI	16° 34' 57.96" N 102° 43' 00.52" E
LIPKU	16° 08' 34.73" N 102° 51' 59.03" E
METAV	16° 20' 22.00" N 103° 09' 34.14" E
NEMTE	16° 03' 44.79" N 102° 29' 12.78" E
ONUVI	16° 32' 28.21" N 102° 26' 55.02" E
SEDNO	16° 17' 33.31" N 103° 17' 07.18" E

CHANGE: NEW CHART.

INTENTIONALLY BLANK

**STANDARD DEPARTURE CHART -
INSTRUMENT (SID) - ICAO**

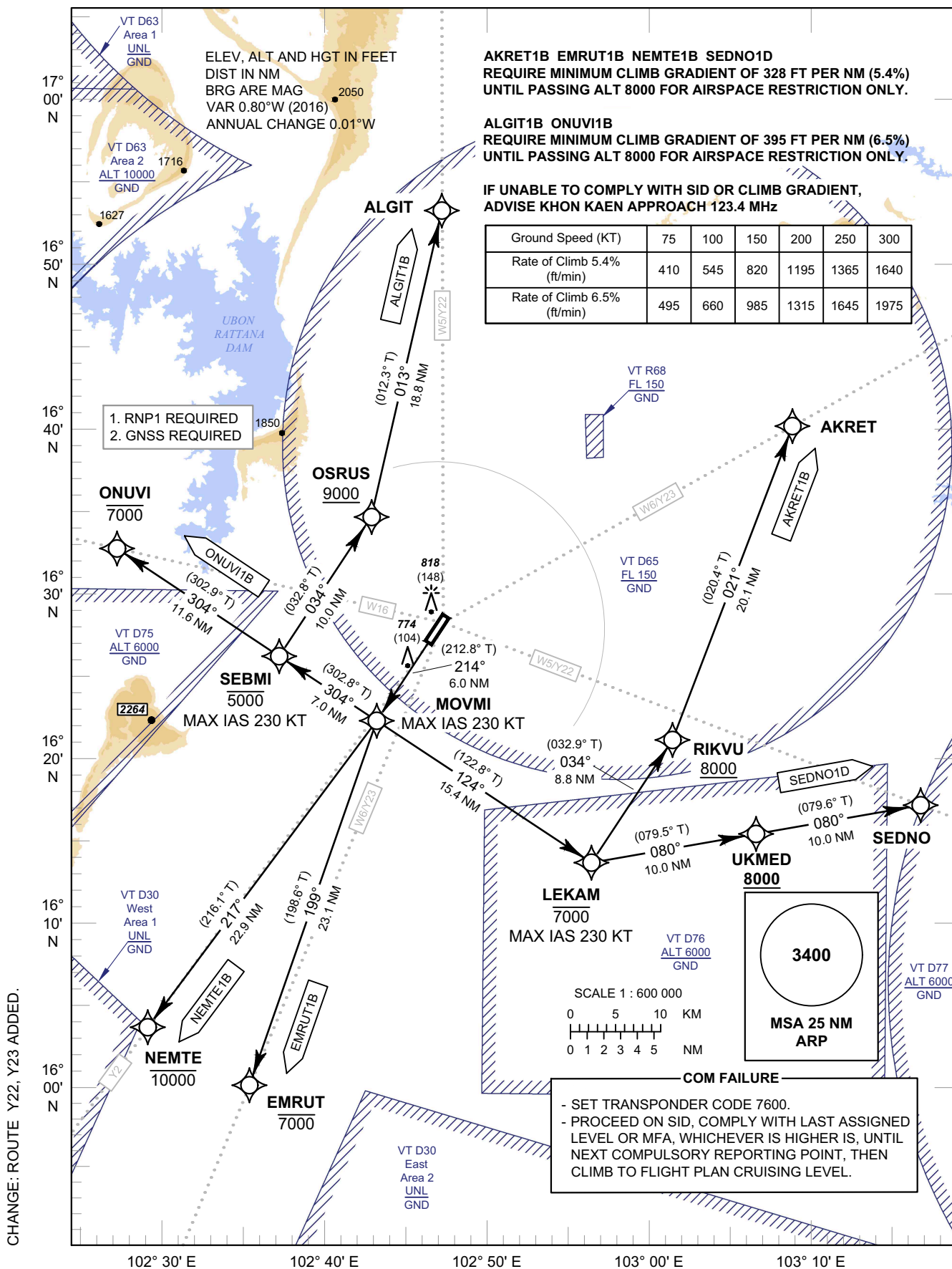
TRANSITION ALTITUDE
11000 FT

APP : 123.4 , 240.0
TWR : 122.25 , 236.6
GND : 121.9
ATIS : 126.85

**KHON KAEN /
Khon Kaen (VTUK)**

RNAV RWY21

AKRET1B ALGIT1B EMRUT1B
NEMTE1B ONUVI1B SEDNO1D



STANDARD DEPARTURE CHART -
INSTRUMENT (SID) - ICAO

KHON KAEN /
Khon Kaen (VTUK)

RNAV RWY21

AKRET1B ALGIT1B EMRUT1B
NEMTE1B ONUVI1B SEDNO1D

TABULAR DESCRIPTION

RNAV RWY21											
Serial Number	Path Descriptor	Waypoint Identifier	Flyover	Course ° M (° T)	Magnetic Variation	Distance (NM)	Turn Direction	Altitude (FT)	Speed (KT)	VPA/ TCH	Navigation Specification
AKRET1B											
010	-	DER RWY21	-	-	+ 0.84	-	-	-	-	-	RNP1
020	CF	MOVMI	-	214°(212.8°)	+ 0.84	6.0	-	-	- 230	-	RNP1
030	TF	LEKAM	-	124°(122.8°)	+ 0.84	15.4	-	-7000	- 230	-	RNP1
040	TF	RIKVU	-	034°(032.9°)	+ 0.84	8.8	-	+8000	-	-	RNP1
050	TF	AKRET	-	021°(020.4°)	+ 0.84	20.1	-	-	-	-	RNP1
ALGIT1B											
010	-	DER RWY21	-	-	+ 0.84	-	-	-	-	-	RNP1
020	CF	MOVMI	-	214°(212.8°)	+ 0.84	6.0	-	-	- 230	-	RNP1
030	TF	SEBMI	-	304°(302.8°)	+ 0.84	7.0	-	-5000	- 230	-	RNP1
040	TF	OSRUS	-	034°(032.8°)	+ 0.84	10.0	-	+9000	-	-	RNP1
040	TF	ALGIT	-	013°(012.3°)	+ 0.84	18.8	-	-	-	-	RNP1
EMRUT1B											
010	-	DER RWY21	-	-	+ 0.84	-	-	-	-	-	RNP1
020	CF	MOVMI	-	214°(212.8°)	+ 0.84	6.0	-	-	- 230	-	RNP1
030	TF	EMRUT	-	199°(198.6°)	+ 0.84	23.1	-	-7000	-	-	RNP1
NEMTE1B											
010	-	DER RWY21	-	-	+ 0.84	-	-	-	-	-	RNP1
020	CF	MOVMI	-	214°(212.8°)	+ 0.84	6.0	-	-	- 230	-	RNP1
030	TF	NEMTE	-	217°(216.1°)	+ 0.84	22.9	-	-10000	-	-	RNP1
ONUVI1B											
010	-	DER RWY21	-	-	+ 0.84	-	-	-	-	-	RNP1
020	CF	MOVMI	-	214°(212.8°)	+ 0.84	6.0	-	-	- 230	-	RNP1
030	TF	SEBMI	-	304°(302.8°)	+ 0.84	7.0	-	-5000	- 230	-	RNP1
040	TF	ONUVI	-	304°(302.9°)	+ 0.84	11.6	-	-7000	-	-	RNP1
SEDNO1D											
010	-	DER RWY21	-	-	+ 0.84	-	-	-	-	-	RNP1
020	CF	MOVMI	-	214°(212.8°)	+ 0.84	6.0	-	-	- 230	-	RNP1
030	TF	LEKAM	-	124°(122.8°)	+ 0.84	15.4	-	-7000	- 230	-	RNP1
040	TF	UKMED	-	080°(079.5°)	+ 0.84	10.0	-	+8000	-	-	RNP1
050	TF	SEDNO	-	080°(079.6°)	+ 0.84	10.0	-	-	-	-	RNP1

CHANGE : SEBMI ALT.

**STANDARD DEPARTURE CHART -
INSTRUMENT (SID) - ICAO**

**KHON KAEN /
Khon Kaen (VTUK)**

RNAV RWY21

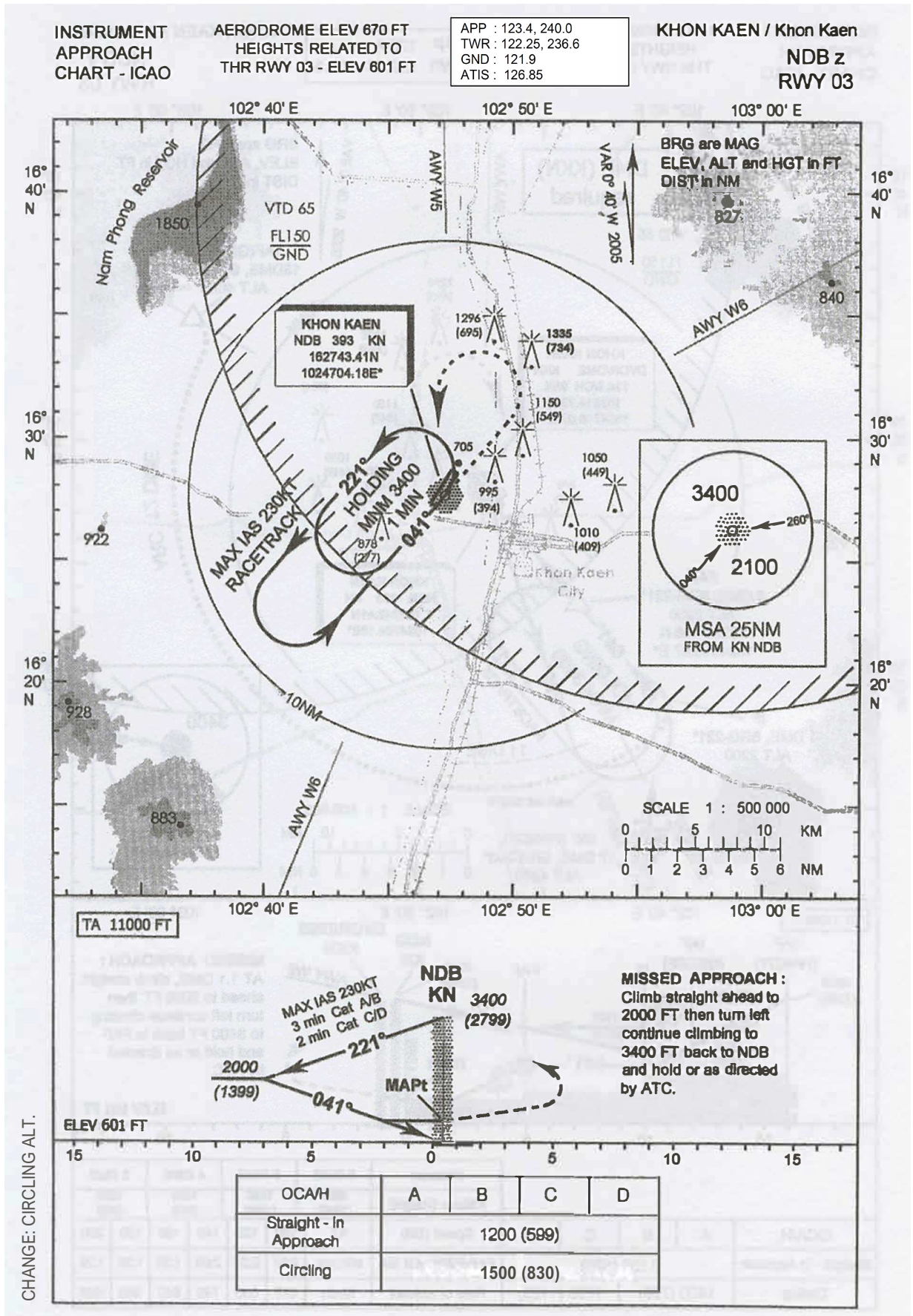
AKRET1B ALGIT1B EMRUT1B
NEMTE1B ONUVI1B SEDNO1D

WAYPOINT LIST

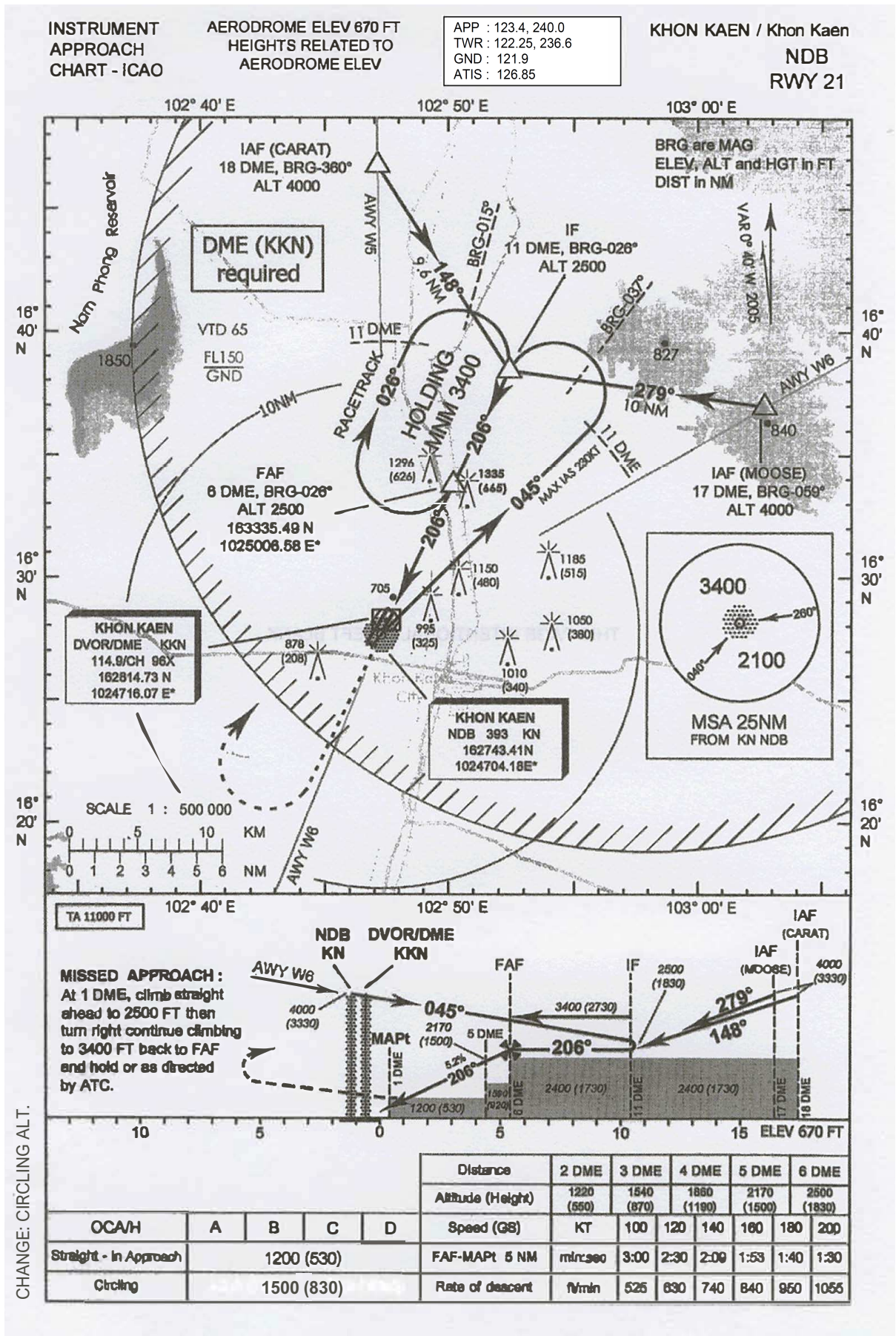
RNAV RWY21	
Waypoint Identifier	Coordinates
DER RWY21	16° 27' 22.26" N 102° 46' 36.04" E
AKRET	16° 40' 16.00" N 103° 08' 55.51" E
ALGIT	16° 52' 59.94" N 102° 46' 54.83" E
EMRUT	16° 00' 19.64" N 102° 35' 33.26" E
LEKAM	16° 13' 55.19" N 102° 56' 40.12" E
MOVMI	16° 22' 18.49" N 102° 43' 13.03" E
NEMTE	16° 03' 44.79" N 102° 29' 12.78" E
ONUVI	16° 32' 28.21" N 102° 26' 55.02" E
OSRUS	16° 34' 33.39" N 102° 42' 44.08" E
RIKVU	16° 21' 20.39" N 103° 01' 38.23" E
SEBMI	16° 26' 06.97" N 102° 37' 05.78" E
SEDNO	16° 17' 33.31" N 103° 17' 07.18" E
UKMED	16° 15' 44.50" N 103° 06' 53.56" E

CHANGE: NEW CHART.

INTENTIONALLY BLANK



INTENTIONALLY BLANK



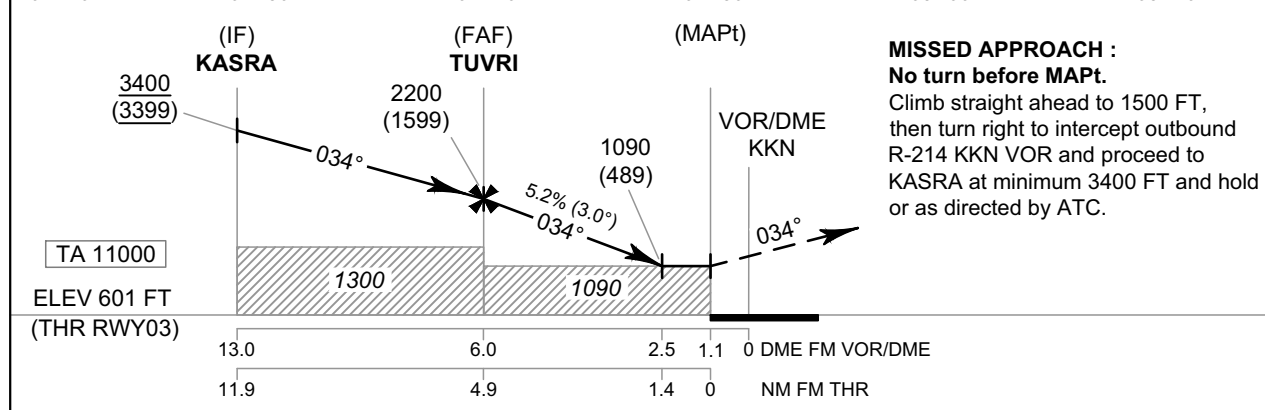
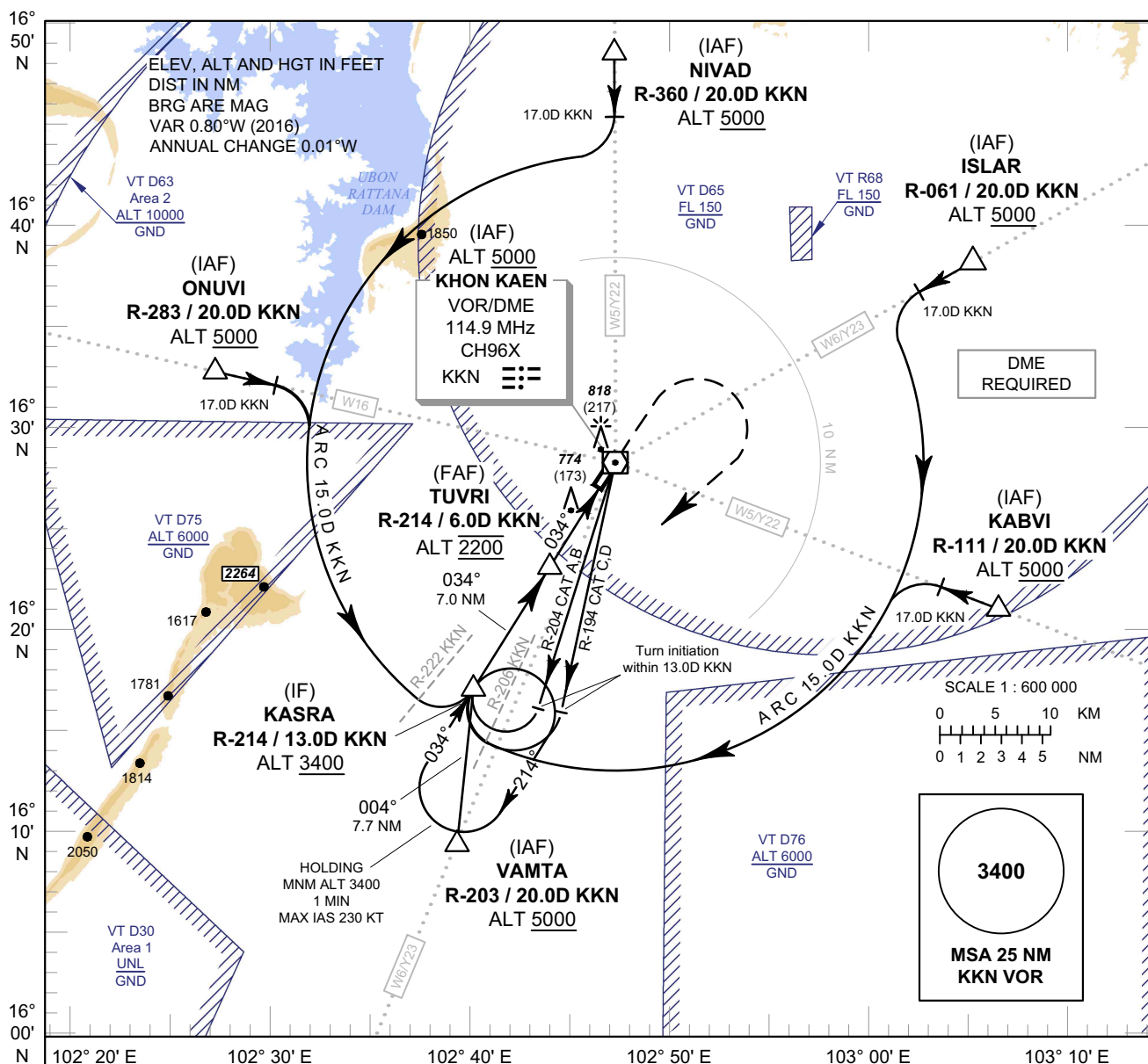
INTENTIONALLY BLANK

**INSTRUMENT
APPROACH
CHART - ICAO**

AERODROME ELEV 670 FT
HEIGHTS RELATED TO
THR RWY03 - ELEV 601 FT

APP : 123.4 , 240.0
TWR : 122.25 , 236.6
GND : 121.9
ATIS : 126.85

**KHON KAEN /
Khon Kaen (VTUK)**
VOR RWY03



OCA/H	A	B	C	D	Distance (KKN)	FAF	5 D	4 D	3 D	2.5 D		
Straight-in Approach	1090 (489)				Altitude (Height)	2200 (1599)	1885 (1284)	1565 (964)	1250 (649)	1090 (489)		
					Ground Speed	knot	70	90	100	120	140	160
Circling (OCH AAL)	1500 (830)				Rate of Descent 5.2%	ft/min	369	474	527	632	737	843

CHANGE: ROUTE Y22, Y23 ADDED.

**INSTRUMENT
APPROACH
CHART - ICAO**

**AERODROME ELEV 670 FT
HEIGHTS RELATED TO
THR RWY03 - ELEV 601 FT**

**KHON KAEN /
Khon Kaen (VTUK)
VOR RWY03**

Fix / Point		Coordinates	
(IAF) ISLAR	R-061 / 20.0D KKN	16° 38' 15.95" N	103° 05' 18.75" E
(IAF) KABVI	R-111 / 20.0D KKN	16° 21' 16.12" N	103° 06' 46.71" E
(IAF) NIVAD	R-360 / 20.0D KKN	16° 48' 19.55" N	102° 46' 59.27" E
(IAF) ONUVI	R-283 / 20.0D KKN	16° 32' 28.21" N	102° 26' 55.02" E
(IAF) VAMTA	R-203 / 20.0D KKN	16° 09' 38.08" N	102° 39' 27.17" E
(IF) KASRA	R-214 / 13.0D KKN	16° 17' 18.69" N	102° 39' 52.88" E
(FAF) TUVRI	R-214 / 6.0D KKN	16° 23' 11.98" N	102° 43' 51.41" E
(MAPt) UK903	R-214 / 1.1D KKN	16° 27' 20.26" N	102° 46' 39.23" E
(IAF) VOR	KKN	16° 28' 14.73" N	102° 47' 16.07" E

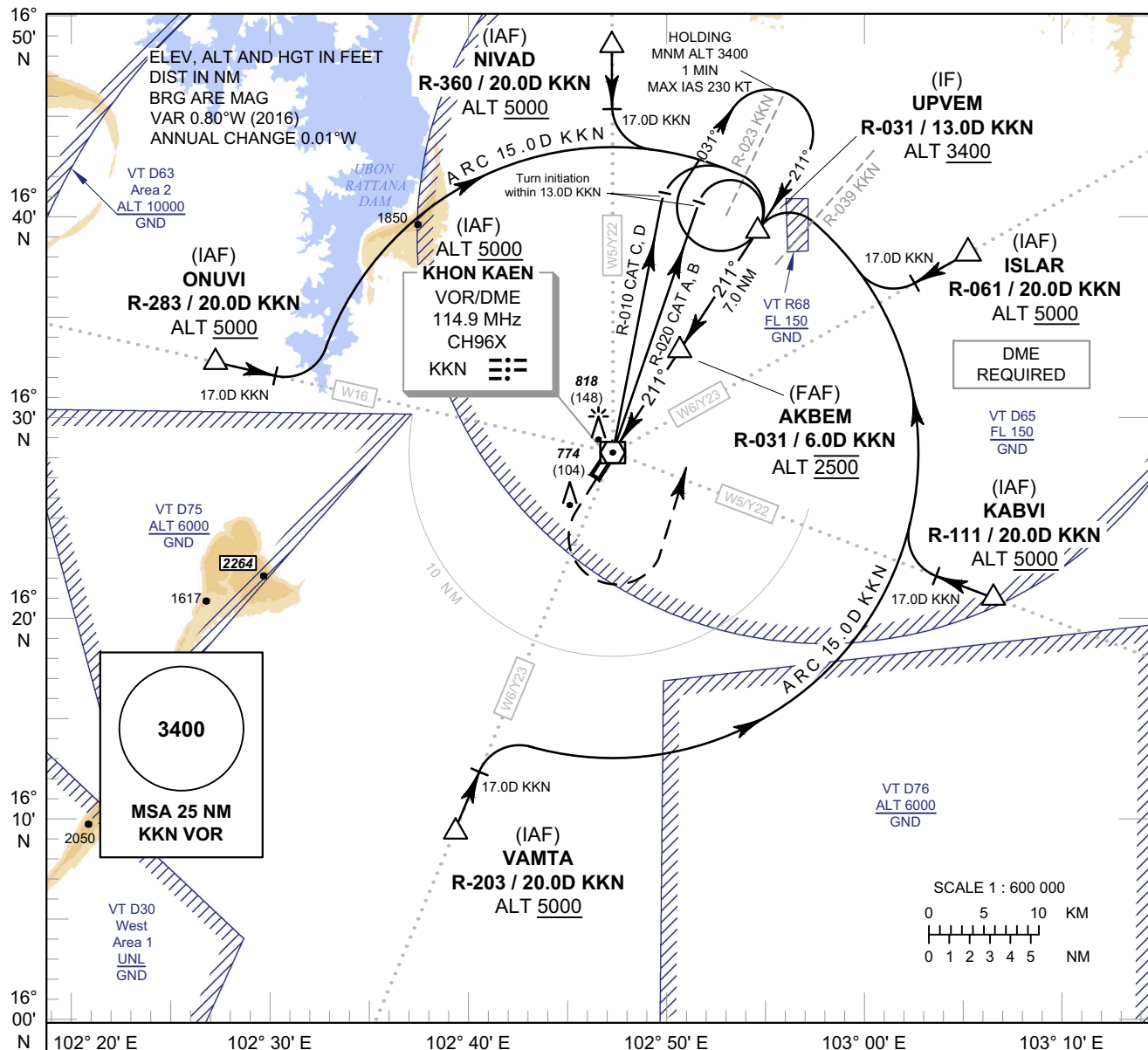
CHANGE: REVISED CHART.

**INSTRUMENT
APPROACH
CHART - ICAO**

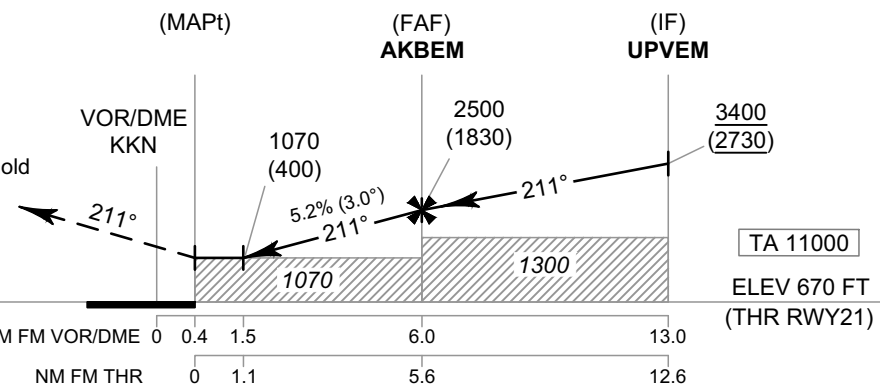
**AERODROME ELEV 670 FT
HEIGHTS RELATED TO
THR RWY21 - ELEV 670 FT**

APP : 123.4 , 240.0
TWR : 122.25 , 236.6
GND : 121.9
ATIS : 126.85

**KHON KAEN /
Khon Kaen (VTUK)
VOR RWY21**



MISSED APPROACH :
No turn before MAPt.
Climb straight ahead to 1500 FT,
then turn left to intercept outbound
R-031 KKN VOR and proceed to
UPVEM at minimum 3400 FT and hold
or as directed by ATC.



OCA/H	A	B	C	D	Distance (KKN)	1.5 D	2 D	3 D	4 D	5 D	FAF	
Straight-in Approach	1070 (400)				Altitude (Height)	1070 (400)	1225 (555)	1540 (870)	1855 (1185)	2175 (1505)	2500 (1830)	
					Ground Speed	knot	70	90	100	120	140	160
Circling (OCH AAL)	1500 (830)				Rate of Descent 5.2%	ft/min	369	474	527	632	737	843

CHANGE: ROUTE Y22, Y23 ADDED.

**INSTRUMENT
APPROACH
CHART - ICAO**

**AERODROME ELEV 670 FT
HEIGHTS RELATED TO
THR RWY21 - ELEV 670 FT**

**KHON KAEN /
Khon Kaen (VTUK)
VOR RWY21**

FIX/POINT		COORDINATES	
(IAF) ISLAR	R-061 / 20.0D KKN	16° 38' 15.95" N	103° 05' 18.75" E
(IAF) KABVI	R-111 / 20.0D KKN	16° 21' 16.12" N	103° 06' 46.71" E
(IAF) VAMTA	R-203 / 20.0D KKN	16° 09' 38.08" N	102° 39' 27.17" E
(IAF) ONUVI	R-283 / 20.0D KKN	16° 32' 28.21" N	102° 26' 55.02" E
(IAF) NIVAD	R-360 / 20.0D KKN	16° 48' 19.55" N	102° 46' 59.27" E
(IF) UPVEM	R-031 / 13.0D KKN	16° 39' 33.86" N	102° 54' 00.59" E
(FAF) AKBEM	R-031 / 6.0D KKN	16° 33' 28.20" N	102° 50' 22.67" E
(MAPt) UK921	R-031 / 0.4D KKN	16° 28' 35.98" N	102° 47' 28.71" E
(IAF) VOR	KKN	16° 28' 14.73" N	102° 47' 16.07" E

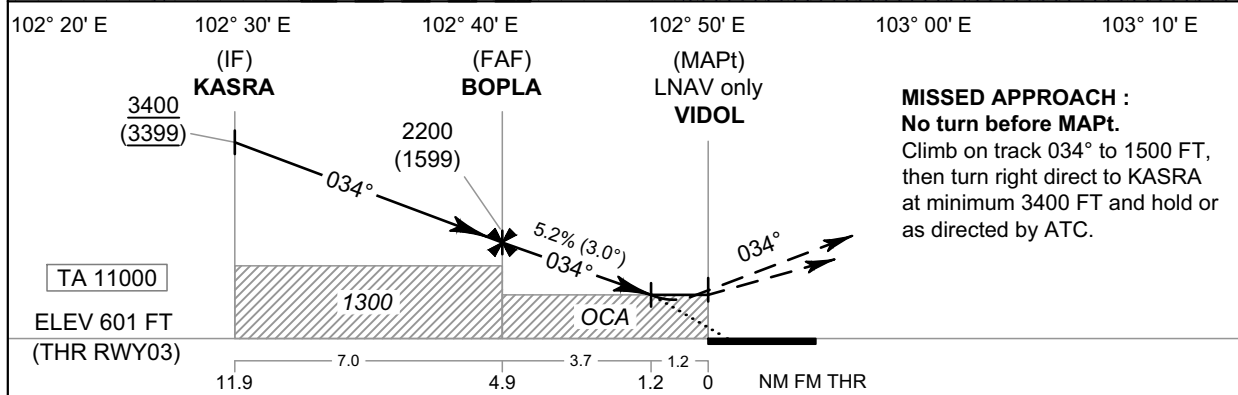
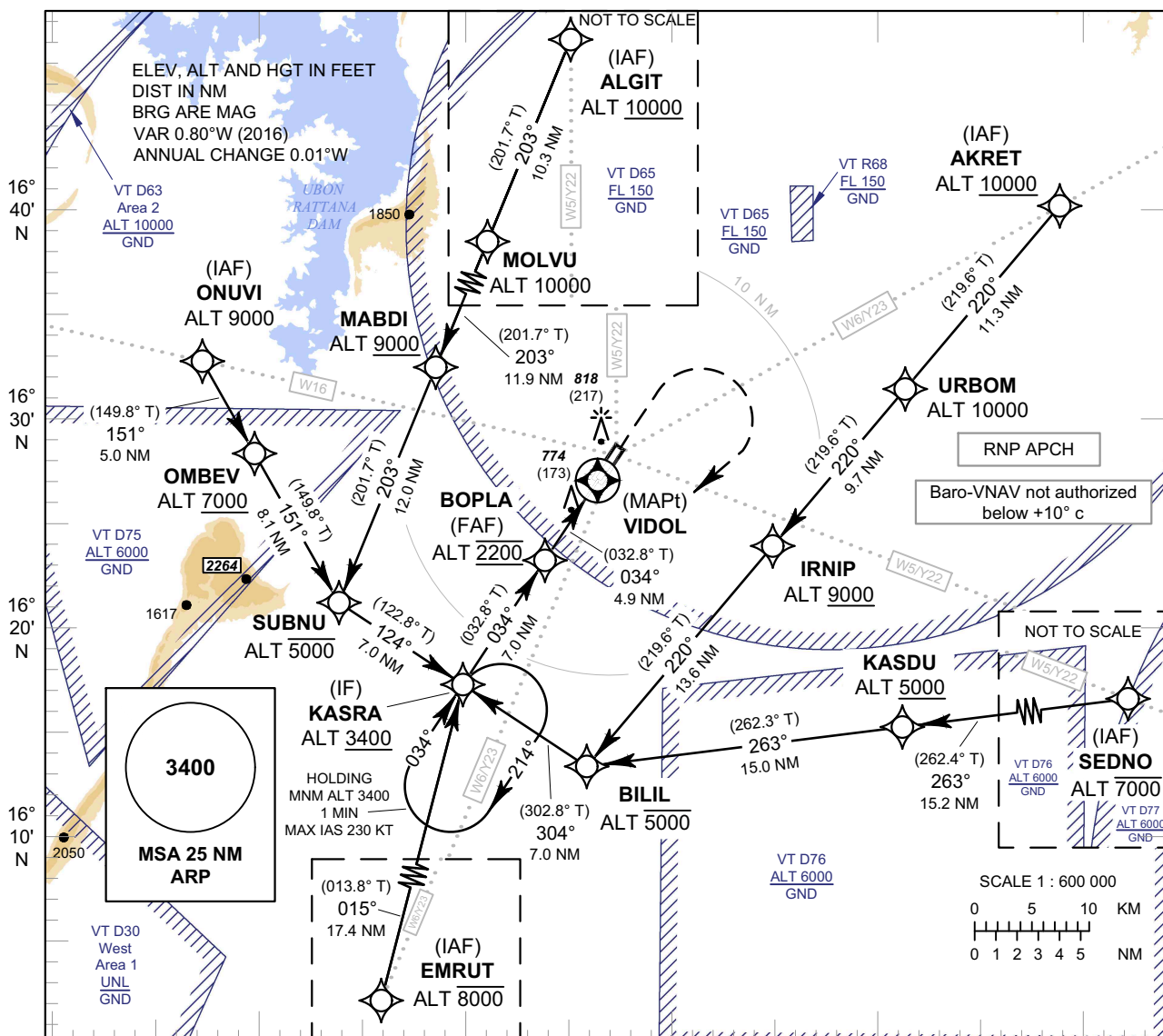
CHANGE: REVISED CHART.

**INSTRUMENT
APPROACH
CHART - ICAO**

**AERODROME ELEV 670 FT
HEIGHTS RELATED TO
THR RWY03 - ELEV 601 FT**

APP : 123.4 , 240.0
TWR : 122.25 , 236.6
GND : 121.9
ATIS : 126.85

**KHON KAEN /
Khon Kaen (VTUK)
RNP RWY03**



CHANGE: ROUTE Y22, Y23 ADDED.

OCA/H	A	B	C	D	NM to NEXT WPT	FAF	4 NM	3 NM	2 NM	1.2NM		
LNAV / VNAV	960 (359)				Altitude (Height)	2200 (1599)	1915 (1314)	1600 (999)	1280 (679)	1030 (429)		
LNAV	1090 (489)				Ground Speed	knot	70	90	100	120	140	160
Circling (OCH AAL)	1500 (830)				Rate of Descent	ft/min	369	474	527	632	737	843

**INSTRUMENT
APPROACH
CHART - ICAO**

**AERODROME ELEV 670 FT
HEIGHTS RELATED TO
THR RWY03 - ELEV 601 FT**

**KHON KAEN /
Khon Kaen (VTUK)
RNP RWY03**

TABULAR DESCRIPTION

RNP RWY03											
Serial Number	Path Descriptor	Waypoint Identifier	Flyover	Course ° M (° T)	Magnetic Variation	Distance (NM)	Turn Direction	Altitude (FT)	Speed (KT)	VPA/ TCH	Navigation Specification
010	IF	(IAF) AKRET	-	-	+ 0.84	-	-	+10000	-	-	RNP APCH
020	TF	URBOM	-	220°(219.6°)	+ 0.84	11.3	-	@10000	-	-	RNP APCH
030	TF	IRNIP	-	220°(219.6°)	+ 0.84	9.7	-	+9000	-	-	RNP APCH
040	TF	BILIL	-	220°(219.6°)	+ 0.84	13.6	-	-5000	-	-	RNP APCH
050	TF	(IF) KASRA	-	304°(302.8°)	+ 0.84	7.0	-	+3400	-	-	RNP APCH
010	IF	(IAF) SEDNO	-	-	+ 0.84	-	-	-7000	-	-	RNP APCH
020	TF	KASDU	-	263°(262.4°)	+ 0.84	15.2	-	+5000	-	-	RNP APCH
030	TF	BILIL	-	263°(262.3°)	+ 0.84	15.0	-	-5000	-	-	RNP APCH
040	TF	(IF) KASRA	-	304°(302.8°)	+ 0.84	7.0	-	+3400	-	-	RNP APCH
010	IF	(IAF) EMRUT	-	-	+ 0.84	-	-	-8000	-	-	RNP APCH
020	TF	(IF) KASRA	-	015°(013.8°)	+ 0.84	17.4	-	+3400	-	-	RNP APCH
010	IF	(IAF) ONUVI	-	-	+ 0.84	-	-	@9000	-	-	RNP APCH
020	TF	OMBEV	-	151°(149.8°)	+ 0.84	5	-	+ 7000	-	-	RNP APCH
030	TF	SUBNU	-	151°(149.8°)	+ 0.84	8.1	-	-5000	-	-	RNP APCH
040	TF	(IF) KASRA	-	124°(122.8°)	+ 0.84	7.0	-	+3400	-	-	RNP APCH
010	IF	(IAF) ALGIT	-	-	+ 0.84	-	-	+10000	-	-	RNP APCH
020	TF	MOLVU	-	203°(201.7°)	+ 0.84	10.3	-	@10000	-	-	RNP APCH
030	TF	MABDI	-	203°(201.7°)	+ 0.84	11.9	-	+ 9000	-	-	RNP APCH
040	TF	SUBNU	-	203°(201.7°)	+ 0.84	12.0	-	-5000	-	-	RNP APCH
050	TF	(IF) KASRA	-	124°(122.8°)	+ 0.84	7.0	-	+3400	-	-	RNP APCH
010	IF	(IF) KASRA	-	-	+ 0.84	-	-	+3400	-	-	RNP APCH
020	TF	(FAF) BOPLA	-	034°(032.8°)	+ 0.84	7.0	-	@2200	-	-	RNP APCH
030	TF	(MAPt @ THR03) VIDOL	Y	034°(032.8°)	+ 0.84	4.9	-	@651	-	-3.0/50	RNP APCH
040	CA	-	-	-	+ 0.84	-	-	+1500	-	-	RNP APCH
050	DF	(IF) KASRA	-	034°(032.8°)	+ 0.84	-	R	+3400	-	-	RNP APCH
060	HM	(IF) KASRA	Y	034°(032.8°)	+ 0.84	1 minute	R	+3400	-	-	RNP APCH

CHANGE : KASRA ALT.

**INSTRUMENT
APPROACH
CHART - ICAO**

**AERODROME ELEV 670 FT
HEIGHTS RELATED TO
THR RWY03 - ELEV 601 FT**

**KHON KAEN /
Khon Kaen (VTUK)
RNP RWY03**

WAYPOINT LIST

RNP RWY03	
Waypoint Identifier	Coordinates
AKRET	16° 40' 16.00" N 103° 08' 55.51" E
ALGIT	16° 52' 59.94" N 102° 46' 54.83" E
BILIL	16° 13' 30.10" N 102° 45' 59.70" E
BOPLA	16° 23' 14.18" N 102° 43' 50.23" E
EMRUT	16° 00' 19.64" N 102° 35' 33.26" E
IRNIP	16° 24' 01.90" N 102° 55' 00.02" E
KASDU	16° 15' 31.42" N 103° 01' 26.79" E
KASRA	16° 17' 18.69" N 102° 39' 52.88" E
MABDI	16° 32' 18.99" N 102° 38' 22.37" E
MOLVU	16° 43' 23.43" N 102° 42' 56.51" E
OMBEV	16° 28' 07.88" N 102° 29' 32.12" E
ONUVI	16° 32' 28.21" N 102° 26' 55.02" E
SEDNO	16° 17' 33.31" N 103° 17' 07.18" E
SUBNU	16° 21' 07.11" N 102° 33' 45.75" E
URBOM	16° 31' 31.58" N 103° 01' 25.31" E
VIDOL	16° 27' 22.26" N 102° 46' 36.04" E

CHANGE: NEW CHART.

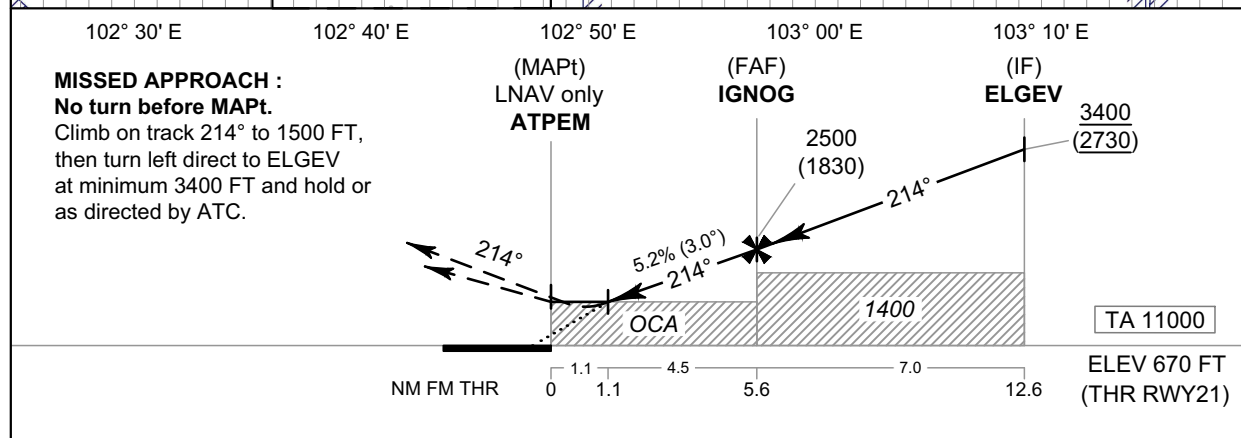
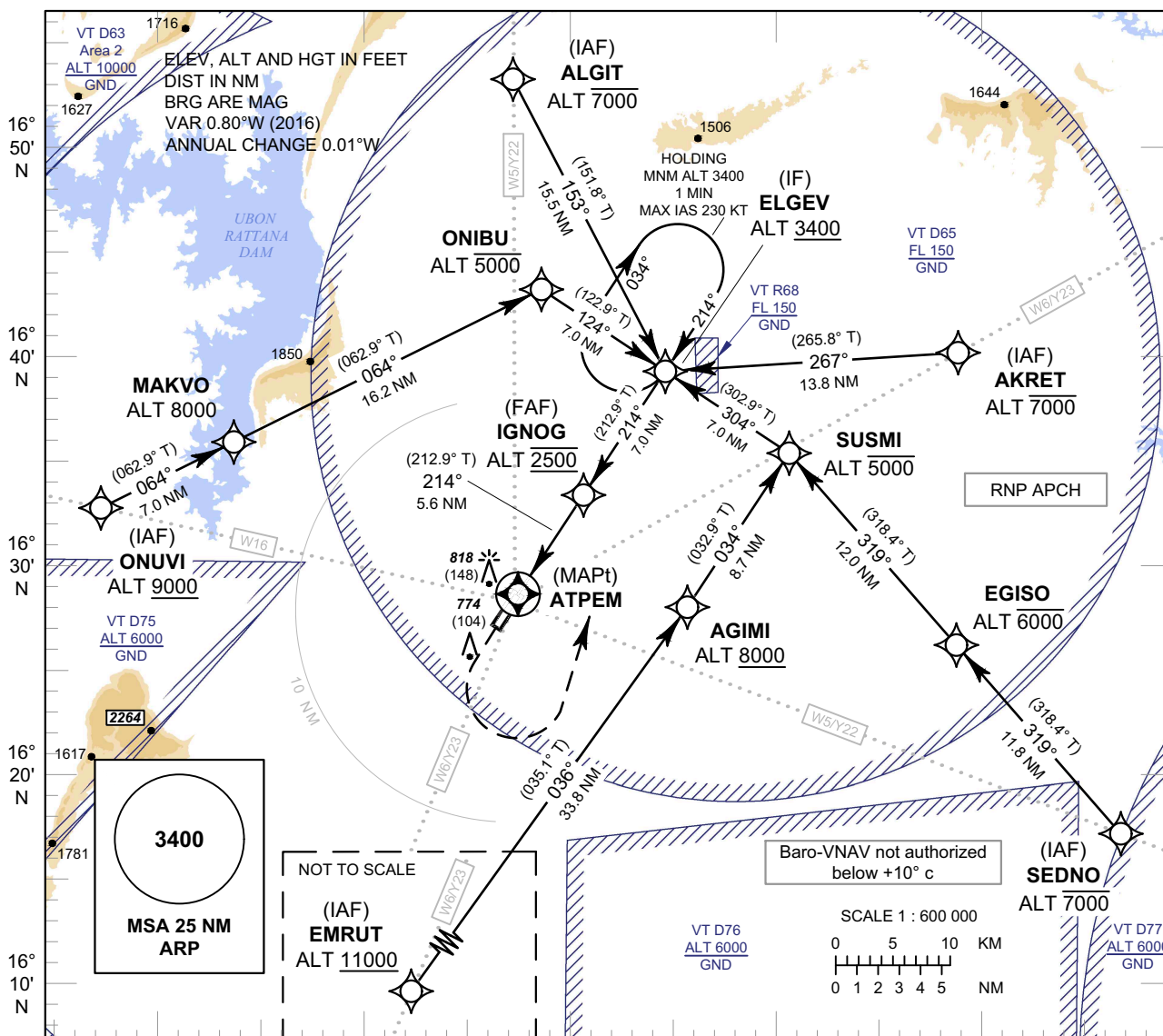
INTENTIONALLY BLANK

**INSTRUMENT
APPROACH
CHART - ICAO**

**AERODROME ELEV 670 FT
HEIGHTS RELATED TO
THR RWY21 - ELEV 670 FT**

APP : 123.4 , 240.0
TWR : 122.25 , 236.6
GND : 121.9
ATIS : 126.85

**KHON KAEN /
Khon Kaen (VTUK)
RNP RWY21**



CHANGE: ROUTE Y22, Y23 ADDED.

OCA/H	A	B	C	D	NM to NEXT WPT	1.1 NM	2 NM	3 NM	4 NM	5 NM	FAF	
LNAV / VNAV	1000 (330)				Altitude (Height)	1070 (400)	1350 (680)	1665 (995)	1985 (1315)	2300 (1630)	2500 (1830)	
LNAV	1070 (400)				Ground Speed	knot	70	90	100	120	140	160
Circling (OCH AAL)	1500 (830)				Rate of Descent	ft/min	369	474	527	632	737	843

**INSTRUMENT
APPROACH
CHART - ICAO**

**AERODROME ELEV 670 FT
HEIGHTS RELATED TO
THR RWY21 - ELEV 670 FT**

**KHON KAEN /
Khon Kaen (VTUK)
RNP RWY21**

TABULAR DESCRIPTION

RNP RWY21											
Serial Number	Path Descriptor	Waypoint Identifier	Flyover	Course ° M (° T)	Magnetic Variation	Distance (NM)	Turn Direction	Altitude (FT)	Speed (KT)	VPA/ TCH	Navigation Specification
010	IF	(IAF) EMRUT	-	-	+ 0.84	-	-	+11000	-	-	RNP APCH
020	TF	AGIMI	-	036°(035.1°)	+ 0.84	33.8	-	+8000	-	-	RNP APCH
030	TF	SUSMI	-	034°(032.9°)	+ 0.84	8.7	-	-5000	-	-	RNP APCH
040	TF	(IF) ELGEV	-	304°(302.9°)	+ 0.84	7.0	-	+3400	-	-	RNP APCH
010	IF	(IAF) SEDNO	-	-	+ 0.84	-	-	-7000	-	-	RNP APCH
020	TF	EGISO	-	319°(318.4°)	+ 0.84	11.8	-	-6000	-	-	RNP APCH
030	TF	SUSMI	-	319°(318.4°)	+ 0.84	12.0	-	-5000	-	-	RNP APCH
040	TF	(IF) ELGEV	-	304°(302.9°)	+ 0.84	7.0	-	+3400	-	-	RNP APCH
010	IF	(IAF) AKRET	-	-	+ 0.84	-	-	-7000	-	-	RNP APCH
020	TF	(IF) ELGEV	-	267°(265.8°)	+ 0.84	13.8	-	+3400	-	-	RNP APCH
010	IF	(IAF) ALGIT	-	-	+ 0.84	-	-	-7000	-	-	RNP APCH
020	TF	(IF) ELGEV	-	153°(151.8°)	+ 0.84	15.5	-	+3400	-	-	RNP APCH
010	IF	(IAF) ONUVI	-	-	+ 0.84	-	-	+9000	-	-	RNP APCH
020	TF	MAKVO	-	064°(064.9°)	+ 0.84	7.0	-	@8000	-	-	RNP APCH
030	TF	ONIBU	-	064°(062.9°)	+ 0.84	16.2	-	-5000	-	-	RNP APCH
040	TF	(IF) ELGEV	-	124°(122.9°)	+ 0.84	7.0	-	+3400	-	-	RNP APCH
010	IF	(IF) ELGEV	-	-	+ 0.84	-	-	+3400	-	-	RNP APCH
020	TF	(FAF) IGNOG	-	214°(212.9°)	+ 0.84	7.0	-	@2500	-	-	RNP APCH
030	TF	(MAPt @ THR21) ATPEM	Y	214°(212.9°)	+ 0.84	5.6	-	@720	-	-3.0/50	RNP APCH
040	CA	-	-	-	+ 0.84	-	-	+1500	-	-	RNP APCH
050	DF	(IF) ELGEV	-	214°(212.9°)	+ 0.84	-	L	+3400	-	-	RNP APCH
060	HM	(IF) ELGEV	Y	214°(212.9°)	+ 0.84	1 minute	R	+3400	-	-	RNP APCH

CHANGE: REVISED CHART.

**INSTRUMENT
APPROACH
CHART - ICAO**

**AERODROME ELEV 670 FT
HEIGHTS RELATED TO
THR RWY21 - ELEV 670 FT**

**KHON KAEN /
Khon Kaen (VTUK)
RNP RWY21**

WAYPOINT LIST

RNP RWY21	
Waypoint Identifier	Coordinates
AGIMI	16° 28' 05.65" N 102° 55' 45.34" E
AKRET	16° 40' 16.00" N 103° 08' 55.51" E
ALGIT	16° 52' 59.94" N 102° 46' 54.83" E
ATPEM	16° 28' 37.46" N 102° 47' 26.33" E
EGISO	16° 26' 25.36" N 103° 08' 58.18" E
ELGEV	16° 39' 14.85" N 102° 54' 33.11" E
EMRUT	16° 00' 19.64" N 102° 35' 33.26" E
IGNOG	16° 33' 20.92" N 102° 50' 36.01" E
MAKVO	16° 35' 40.27" N 102° 33' 24.33" E
ONIBU	16° 43' 03.71" N 102° 48' 25.59" E
ONUVI	16° 32' 28.21" N 102° 26' 55.02" E
SEDNO	16° 17' 33.31" N 103° 17' 07.18" E
SUSMI	16° 35' 25.80" N 103° 00' 40.39" E

CHANGE: NEW CHART.

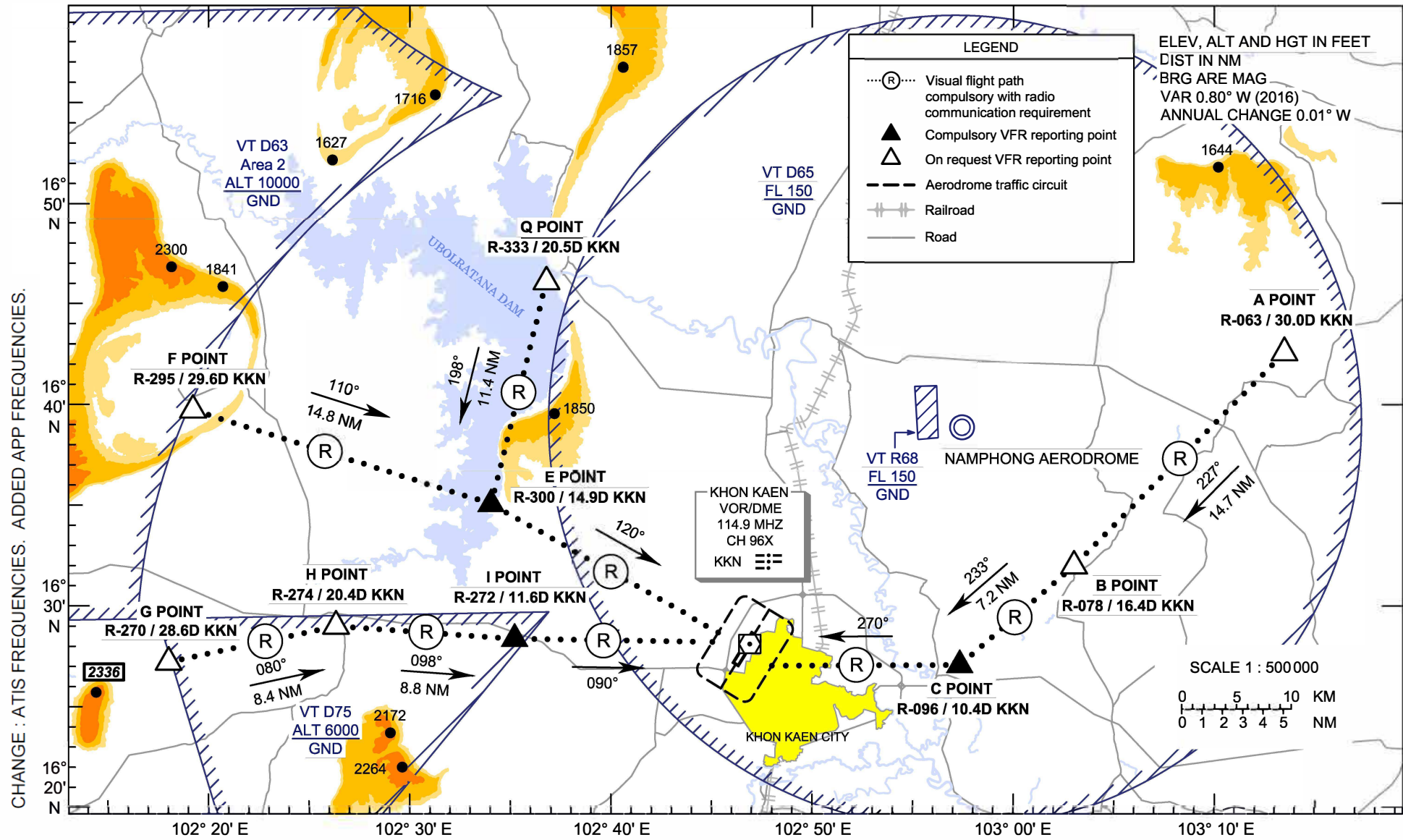
INTENTIONALLY BLANK

**VFR ENTRY
PROCEDURE
CHART**

**AERODROME ELEV 670 FT
HEIGHTS RELATED TO
AERODROME ELEV**

APP : 123.4, 240.0
TWR : 122.25, 236.6
GND : 121.9
ATIS : 126.85

**KHON KAEN /
Khon Kaen (VTUK)
RWY03/21
(NORTH)**



**VFR ENTRY
PROCEDURE
CHART**

**AERODROME ELEV 670 FT
HEIGHTS RELATED TO
AERODROME ELEV**

**KHON KAEN /
Khon Kaen (VTUK)
RWY03/21
(NORTH)**

ARR-RWY03/21 (From North)

Inbound via Q POINT then heading 198° to E POINT and heading 120° to over aerodrome. Join aerodrome traffic circuit when directed by ATC.

ARR-RWY03/21 (From North-West)

Inbound via F POINT then heading 110° to E POINT and heading 120° to over aerodrome. Join aerodrome traffic circuit when directed by ATC.

ARR-RWY03/21 (From West)

Inbound via G POINT then heading 080° to H POINT, heading 098° to I POINT, and heading 090° to over aerodrome. Join aerodrome traffic circuit when directed by ATC.

ARR-RWY03/21 (From North-East)

Inbound via A POINT with recommended altitude at or above 2000 ft then heading 227° to B POINT, heading 233° to C POINT, and heading 270° to over aerodrome. Join aerodrome traffic circuit when directed by ATC.

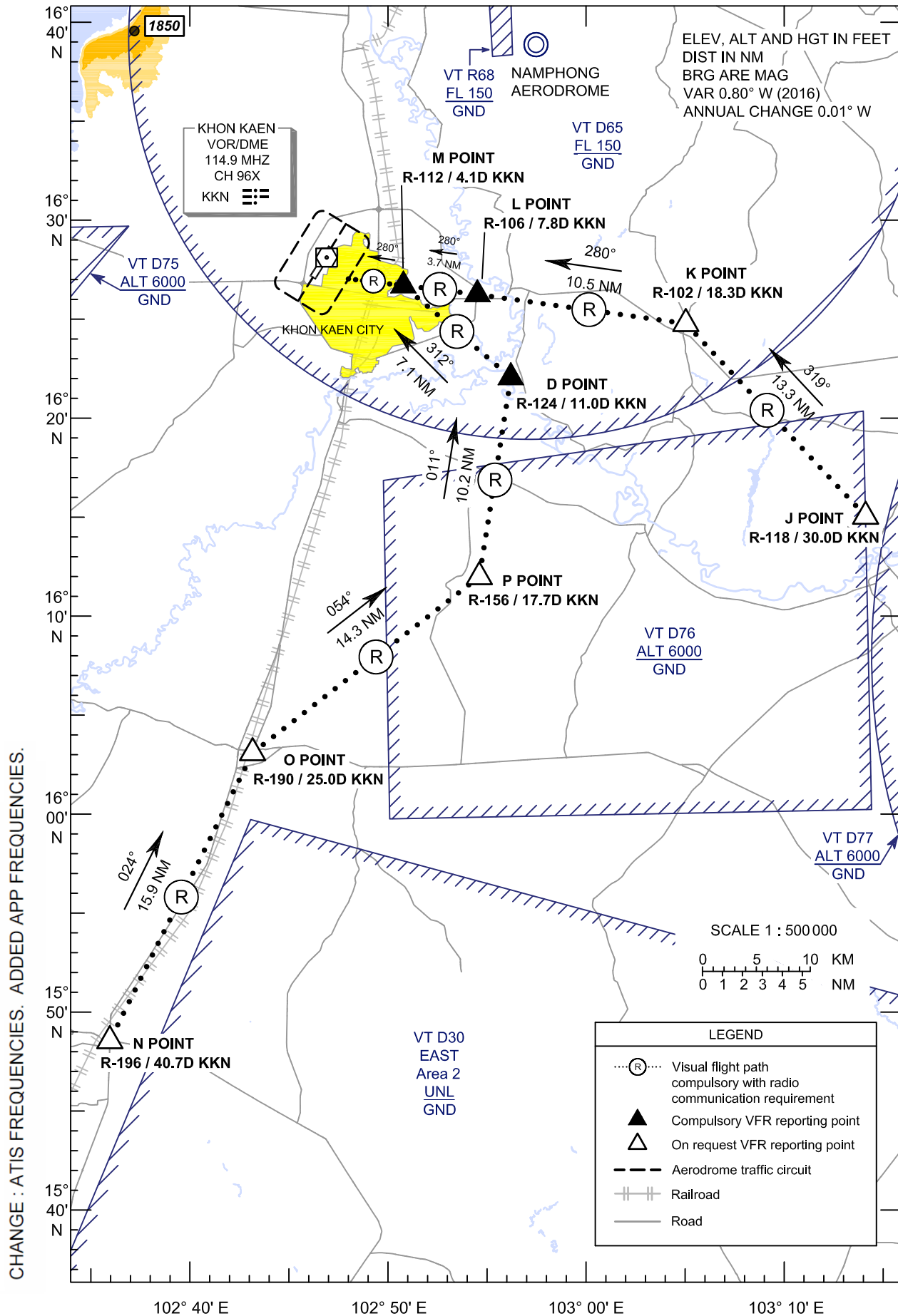
Reporting points	Landmark	Radial / DME from KKN VOR	Coordinates	
			Latitude	Longitude
"A" or ALPHA Point	Ban Nong Chum Sang Temple	R-063 / 30.0D	16° 42' 06.00" N	103° 14' 58.00" E
"B" or BRAVO Point	Sam Sung Police Station	R-078 / 16.4D	16° 31' 47.02" N	103° 03' 58.55" E
"C" or CHARLIE Point	White Pagoda	R-096 / 10.4D	16° 27' 19.00" N	102° 58' 03.40" E
"E" or ECHO Point	Sa Wang Cherng Khao Temple	R-300 / 14.9D	16° 35' 27.07" N	102° 33' 41.30" E
"F" or FOXTROT Point	Phu Wiang Hill	R-295 / 29.6D	16° 40' 20.37" N	102° 19' 07.91" E
"G" or GOLF Point	Ei San Temple (Road Intersection)	R-270 / 28.6D	16° 27' 51.90" N	102° 17' 29.80" E
"H" or HOTEL Point	Nhong Reua (Road Intersection)	R-274 / 20.4D	16° 29' 29.60" N	102° 26' 06.20" E
"I" or INDIA Point	Khon Kaen 4 Power Plant	R-272 / 11.6D	16° 28' 26.70" N	102° 35' 12.40" E
"Q" or QUEBEC Point	Au Bon Rat Dam	R-333 / 20.5D	16° 46' 20.20" N	102° 37' 11.90" E
KHON KAEN VOR/DME (KKN)	KHON KAEN VOR/DME Station	-	16° 28' 14.73" N	102° 47' 16.07" E

CHANGE: NEW CHART.

VFR ENTRY PROCEDURE CHART
AERODROME ELEV 670 FT
 HEIGHTS RELATED TO
 AERODROME ELEV

APP : 123.4, 240.0
 TWR : 122.25, 236.6
 GND : 121.9
 ATIS : 126.85

**KHON KAEN /
 Khon Kaen (VTUK)
 RWY03/21
 (SOUTH)**



**VFR ENTRY
PROCEDURE
CHART**

**AERODROME ELEV 670 FT
HEIGHTS RELATED TO
AERODROME ELEV**

**KHON KAEN /
Khon Kaen (VTUK)
RWY03/21
(SOUTH)**

ARR-RWY03/21 (From East)

Inbound via J POINT then heading 319° to K POINT, heading 280° to L POINT, heading 280° to M POINT, and heading 280° to over aerodrome. Join aerodrome traffic circuit when directed by ATC.

ARR-RWY03/21 (From South)

Inbound via N POINT then heading 024° to O POINT, heading 054° to P POINT, heading 011° to D POINT, heading 312° to M POINT, and heading 280° to over aerodrome. Join aerodrome traffic circuit when directed by ATC.

Reporting points	Landmark	Radial / DME from KKN VOR	Coordinates	
			Latitude	Longitude
"D" or DELTA Point	Wang Yang Weir	R-124 / 11.0D	16° 22' 07.00" N	102° 56' 50.60" E
"J" or JULIETT Point	Ma Ha Sa Ra Kham University	R-118 / 30.0D	16° 14' 33.17" N	103° 15' 03.57" E
"K" or KILO Point	Chiang Yeun	R-102 / 18.3D	16° 24' 35.30" N	103° 05' 53.00" E
"L" or LIMA Point	Bridge	R-106 / 7.8D	16° 26' 13.03" N	102° 55' 04.32" E
"M" or MIKE Point	Beung Thung Sang Park	R-112 / 4.1D	16° 26' 47.42" N	102° 51' 15.09" E
"N" or NOVEMBER Point	Mueang Pol	R-196 / 40.7D	15° 48' 44.90" N	102° 36' 26.90" E
"O" or OSCAR Point	Ban Phai (Road Intersection)	R-190 / 25.0D	16° 03' 27.30" N	102° 42' 57.50" E
"P" or PAPA Point	Khon Sak Creek	R-156 / 17.7D	16° 12' 04.70" N	102° 54' 53.80" E
KHON KAEN VOR/DME (KKN)	KHON KAEN VOR/DME Station	-	16° 28' 14.73" N	102° 47' 16.07" E

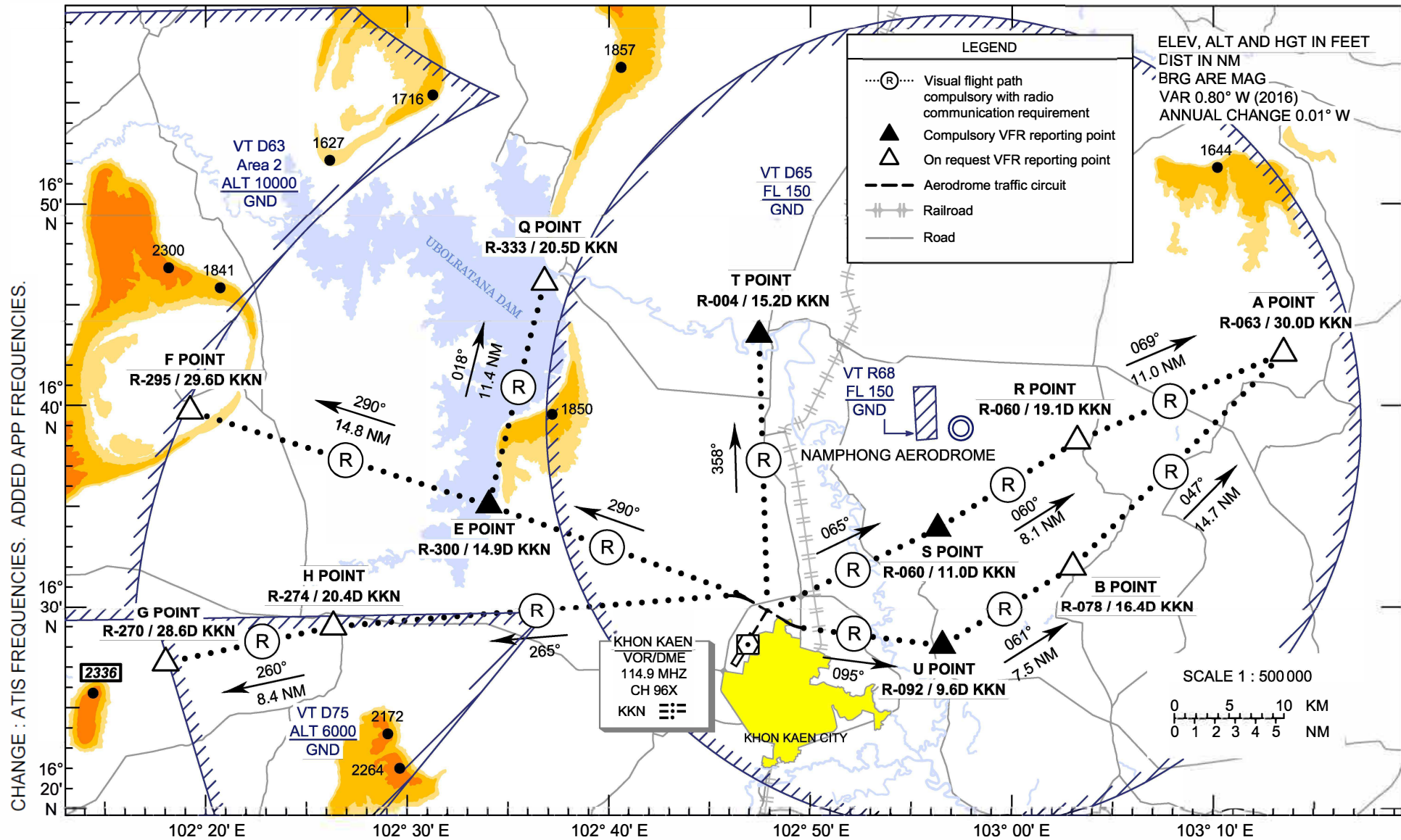
CHANGE: NEW CHART.

**VFR EXIT
PROCEDURE
CHART**

**AERODROME ELEV 670 FT
HEIGHTS RELATED TO
AERODROME ELEV**

APP : 123.4, 240.0
TWR : 122.25, 236.6
GND : 121.9
ATIS : 126.85

**KHON KAEN /
Khon Kaen (VTUK)
RWY03
(NORTH)**



**VFR EXIT
PROCEDURE
CHART**

AERODROME ELEV 670 FT
HEIGHTS RELATED TO
AERODROME ELEV

**KHON KAEN /
Khon Kaen (VTUK)
RWY03
(NORTH)**

DEP-RWY03 (North)

After departure climb to altitude 500 ft then heading 358° to T POINT.

DEP-RWY03 (North)

After departure turn left proceed westbound (heading 300°) until 2.5 DME then heading 290° to E POINT, and heading 018° to Q POINT.

DEP-RWY03 (North-East)

After departure turn right proceed eastbound (heading 120°) until 2.5 DME then heading 095° to U POINT, heading 061° to B POINT, and heading 047° to A POINT with recommended altitude at or above 2000 ft.

DEP-RWY03 (North-East)

After departure climb to altitude 500 ft then heading 065° to S POINT, heading 060° to R POINT, and heading 069° to A POINT with recommended altitude at or above 2000 ft.

DEP-RWY03 (North-West)

After departure turn left proceed westbound (heading 300°) until 2.5 DME then heading 290° to E POINT, and heading 290° to F POINT.

DEP-RWY03 (West)

After departure turn left proceed westbound (heading 300°) until 2.5 DME then heading 265° to H POINT, and heading 260° to G POINT.

Reporting points	Landmark	Radial / DME from KKN VOR	Coordinates	
			Latitude	Longitude
"A" or ALPHA Point	Ban Nong Chum Sang Temple	R-063 / 30.0D	16° 42' 06.00" N	103° 14' 58.00" E
"B" or BRAVO Point	Sam Sung Police Station	R-078 / 16.4D	16° 31' 47.02" N	103° 03' 58.55" E
"E" or ECHO Point	Sa Wang Cherng Khao Temple	R-300 / 14.9D	16° 35' 27.07" N	102° 33' 41.30" E
"F" or FOXTROT Point	Phu Wiang Hill	R-295 / 29.6D	16° 40' 20.37" N	102° 19' 07.91" E
"G" or GOLF Point	Ei San Temple (Road Intersection)	R-270 / 28.6D	16° 27' 51.90" N	102° 17' 29.80" E
"H" or HOTEL Point	Nhong Reua (Road Intersection)	R-274 / 20.4D	16° 29' 29.60" N	102° 26' 06.20" E
"Q" or QUEBEC Point	Au Bon Rat Dam	R-333 / 20.5D	16° 46' 20.20" N	102° 37' 11.90" E
"U" or UNIFORM Point	Pho Tha Ram Temple	R-092 / 9.6D	16° 28' 01.00" N	102° 57' 13.00" E
"R" or ROMEO Point	Nhong Krung Yai Village	R-060 / 19.1D	16° 37' 59.60" N	103° 04' 19.60" E
"S" or SIERRA Point	Phra That Kham Kaen	R-060 / 11.0D	16° 33' 49.00" N	102° 57' 06.00" E
"T" or TANGO Point	Bridge	R-004 / 15.2D	16° 43' 31.00" N	102° 48' 09.00" E
KHON KAEN VOR/DME (KKN)	KHON KAEN VOR/DME Station	-	16° 28' 14.73" N	102° 47' 16.07" E

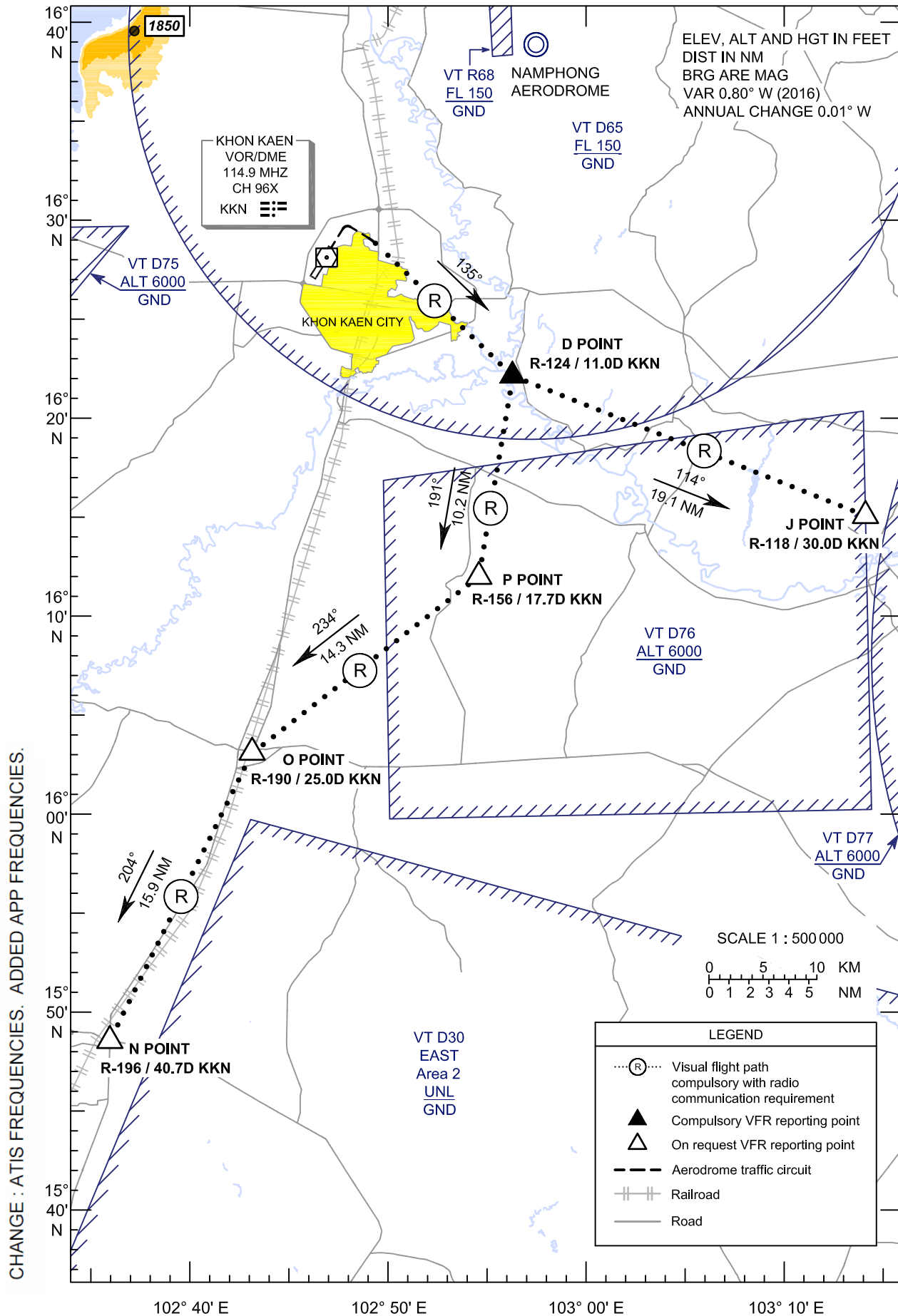
CHANGE: NEW CHART.

VFR EXIT
PROCEDURE
CHART

AERODROME ELEV 670 FT
HEIGHTS RELATED TO
AERODROME ELEV

APP : 123.4, 240.0
TWR : 122.25, 236.6
GND : 121.9
ATIS : 126.85

**KHON KAEN /
Khon Kaen (VTUK)
RWY03
(SOUTH)**



**VFR EXIT
PROCEDURE
CHART**

**AERODROME ELEV 670 FT
HEIGHTS RELATED TO
AERODROME ELEV**

**KHON KAEN /
Khon Kaen (VTUK)
RWY03
(SOUTH)**

DEP-RWY03 (South-East)

After departure turn right proceed eastbound (heading 120°) until 2.5 DME then heading 135° to D POINT, and heading 114° to J POINT.

DEP-RWY03 (South)

After departure turn right proceed eastbound (heading 120°) until 2.5 DME then heading 135° to D POINT, heading 191° to P POINT, heading 234° to O POINT, and heading 204° to N POINT.

Reporting points	Landmark	Radial / DME from KKN VOR	Coordinates	
			Latitude	Longitude
"D" or DELTA Point	Wang Yang Weir	R-124 / 11.0D	16° 22' 07.00" N	102° 56' 50.60" E
"J" or JULIETT Point	Ma Ha Sa Ra Kham University	R-118 / 30.0D	16° 14' 33.17" N	103° 15' 03.57" E
"N" or NOVEMBER Point	Mueang Pol	R-196 / 40.7D	15° 48' 44.90" N	102° 36' 26.90" E
"O" or OSCAR Point	Ban Phai (Road Intersection)	R-190 / 25.0D	16° 03' 27.30" N	102° 42' 57.50" E
"P" or PAPA Point	Khon Sak Creek	R-156 / 17.7D	16° 12' 04.70" N	102° 54' 53.80" E
KHON KAEN VOR/DME (KKN)	KHON KAEN VOR/DME Station	-	16° 28' 14.73" N	102° 47' 16.07" E

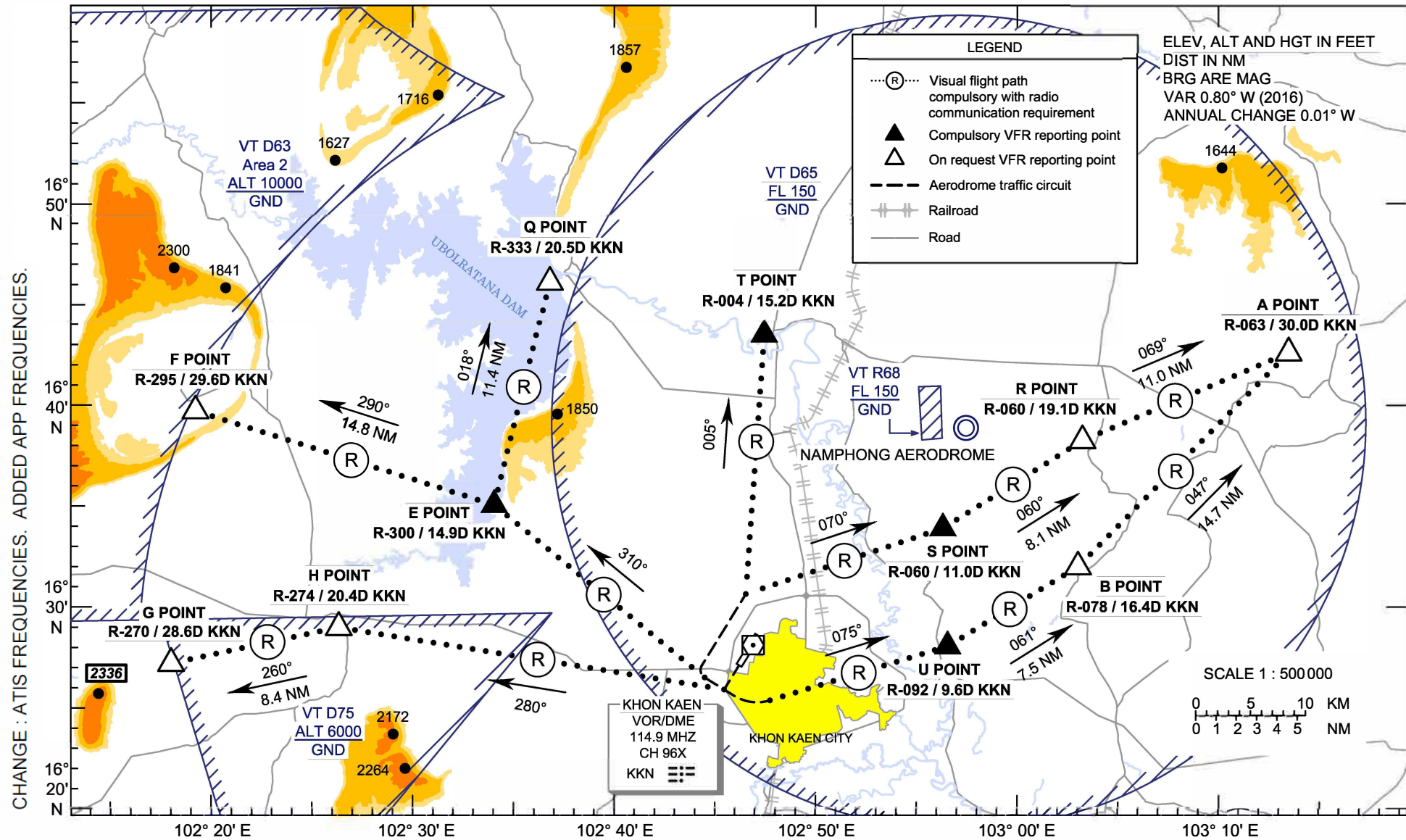
CHANGE: NEW CHART.

**VFR EXIT
PROCEDURE
CHART**

**AERODROME ELEV 670 FT
HEIGHTS RELATED TO
AERODROME ELEV**

APP : 123.4, 240.0
TWR : 122.25, 236.6
GND : 121.9
ATIS : 126.85

**KHON KAEN /
Khon Kaen (VTUK)
RWY21
(NORTH)**



**VFR EXIT
PROCEDURE
CHART**

**AERODROME ELEV 670 FT
HEIGHTS RELATED TO
AERODROME ELEV**

**KHON KAEN /
Khon Kaen (VTUK)
RWY21
(NORTH)**

DEP-RWY21 (North)

After departure turn right proceed westbound (heading 300°) until 2.5 DME then turn right to join right downwind then heading 005° to T POINT.

DEP-RWY21 (North)

After departure turn right proceed westbound (heading 300°) until 2.5 DME then heading 310° to E POINT, and heading 018° to Q POINT.

DEP-RWY21 (North-East)

After departure turn left proceed eastbound (heading 120°) until 2.5 DME then heading 075° to U POINT, heading 061° to B POINT, and heading 047° to A POINT with recommended altitude at or above 2000 ft.

DEP-RWY21 (North-East)

After departure turn right proceed westbound (heading 300°) until 2.5 DME then turn right to join right downwind then heading 070° to S POINT, heading 060° to R POINT, and heading 069° to A POINT with recommended altitude at or above 2000 ft.

DEP-RWY21 (North-West)

After departure turn right proceed westbound (heading 300°) until 2.5 DME then heading 310° to E POINT, and heading 290° to F POINT.

DEP-RWY21 (West)

After departure climb to altitude 500 ft then heading 280° to H POINT, and heading 260° to G POINT.

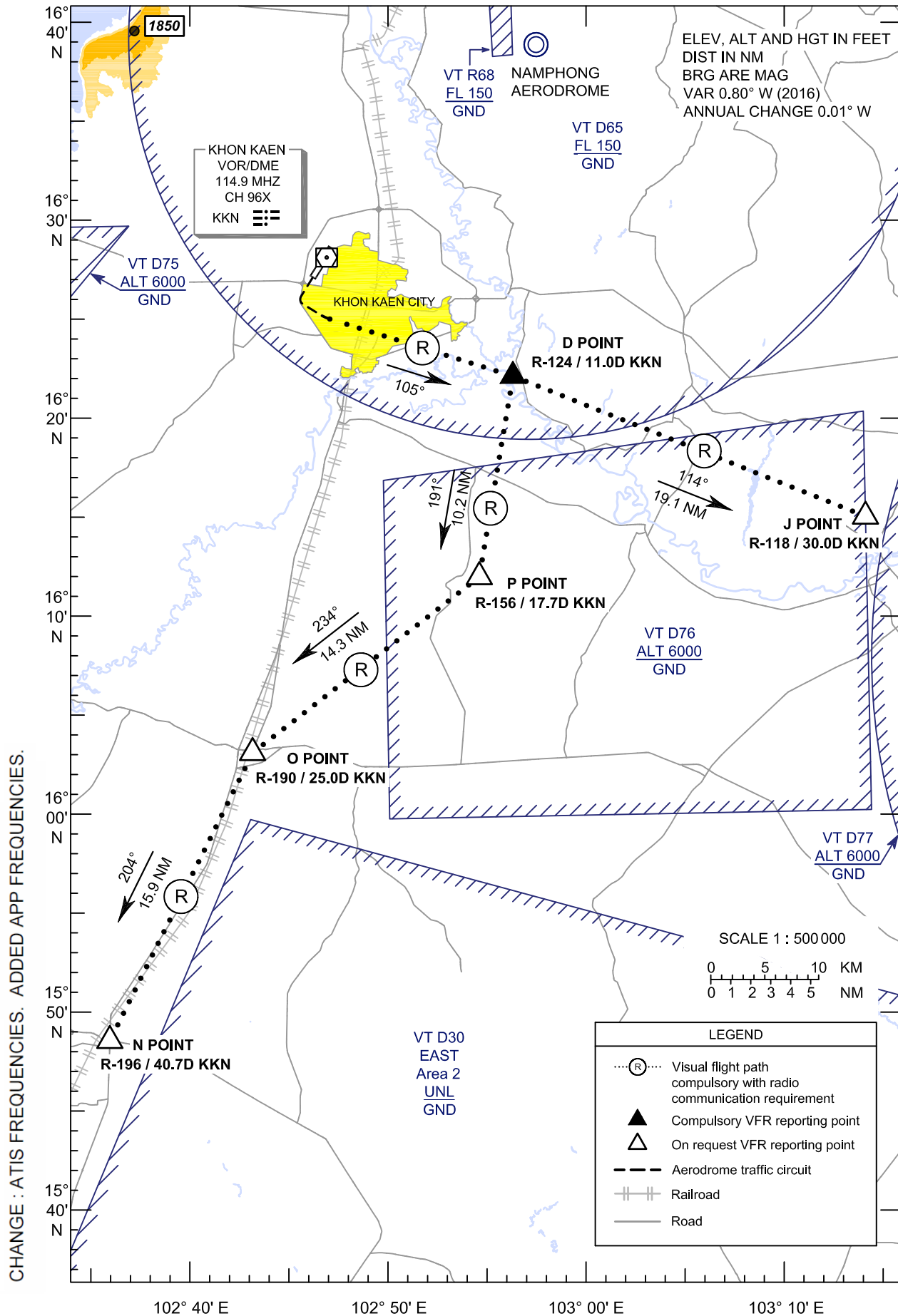
Reporting points	Landmark	Radial / DME from KKN VOR	Coordinates	
			Latitude	Longitude
"A" or ALPHA Point	Ban Nong Chum Sang Temple	R-063 / 30.0D	16° 42' 06.00" N	103° 14' 58.00" E
"B" or BRAVO Point	Sam Sung Police Station	R-078 / 16.4D	16° 31' 47.02" N	103° 03' 58.55" E
"E" or ECHO Point	Sa Wang Cherng Khao Temple	R-300 / 14.9D	16° 35' 27.07" N	102° 33' 41.30" E
"F" or FOXTROT Point	Phu Wiang Hill	R-295 / 29.6D	16° 40' 20.37" N	102° 19' 07.91" E
"G" or GOLF Point	Ei San Temple (Road Intersection)	R-270 / 28.6D	16° 27' 51.90" N	102° 17' 29.80" E
"H" or HOTEL Point	Nhong Reua (Road Intersection)	R-274 / 20.4D	16° 29' 29.60" N	102° 26' 06.20" E
"Q" or QUEBEC Point	Au Bon Rat Dam	R-333 / 20.5D	16° 46' 20.20" N	102° 37' 11.90" E
"U" or UNIFORM Point	Pho Tha Ram Temple	R-092 / 9.6D	16° 28' 01.00" N	102° 57' 13.00" E
"R" or ROMEO Point	Nhong Krung Yai Village	R-060 / 19.1D	16° 37' 59.60" N	103° 04' 19.60" E
"S" or SIERRA Point	Phra That Kham Kaen	R-060 / 11.0D	16° 33' 49.00" N	102° 57' 06.00" E
"T" or TANGO Point	Bridge	R-004 / 15.2D	16° 43' 31.00" N	102° 48' 09.00" E
KHON KAEN VOR/DME (KKN)	KHON KAEN VOR/DME Station	-	16° 28' 14.73" N	102° 47' 16.07" E

CHANGE: NEW CHART.

VFR EXIT PROCEDURE CHART
AERODROME ELEV 670 FT
HEIGHTS RELATED TO AERODROME ELEV

APP : 123.4, 240.0
TWR : 122.25, 236.6
GND : 121.9
ATIS : 126.85

**KHON KAEN /
Khon Kaen (VTUK)
RWY21
(SOUTH)**



**VFR EXIT
PROCEDURE
CHART**

**AERODROME ELEV 670 FT
HEIGHTS RELATED TO
AERODROME ELEV**

**KHON KAEN /
Khon Kaen (VTUK)
RWY21
(SOUTH)**

DEP-RWY21 (South-East)

After departure turn left proceed eastbound (heading 120°) until 2.5 DME then heading 105° to D POINT, and heading 114° to J POINT.

DEP-RWY21 (South)

After departure turn left proceed eastbound (heading 120°) until 2.5 DME then heading 105° to D POINT, heading 191° to P POINT, heading 234° to O POINT, and heading 204° to N POINT.

Reporting points	Landmark	Radial / DME from KKN VOR	Coordinates	
			Latitude	Longitude
"D" or DELTA Point	Wang Yang Weir	R-124 / 11.0D	16° 22' 07.00" N	102° 56' 50.60" E
"J" or JULIETT Point	Ma Ha Sa Ra Kham University	R-118 / 30.0D	16° 14' 33.17" N	103° 15' 03.57" E
"N" or NOVEMBER Point	Mueang Pol	R-196 / 40.7D	15° 48' 44.90" N	102° 36' 26.90" E
"O" or OSCAR Point	Ban Phai (Road Intersection)	R-190 / 25.0D	16° 03' 27.30" N	102° 42' 57.50" E
"P" or PAPA Point	Khon Sak Creek	R-156 / 17.7D	16° 12' 04.70" N	102° 54' 53.80" E
KHON KAEN VOR/DME (KKN)	KHON KAEN VOR/DME Station	-	16° 28' 14.73" N	102° 47' 16.07" E

CHANGE: NEW CHART.