

## VTSY AD 2.1 AERODROME LOCATION INDICATOR AND NAME

## VTSY - YALA/BETONG AIRPORT

## VTSY AD 2.2 AERODROME GEOGRAPHICAL AND ADMINISTRATIVE DATA

1	ARP coordinates and site at AD	054719.64N 1010849.77E
2	Direction and distance from (city)	10 KM NE from city
3	Elevation/Reference temperature	225.25 M (738 FT)
4	Geoid Undulation at AD ELEV PSN	-9 M (-30 FT)
5	MAG VAR/Annual change	0.27°W (2020) / 0.03°W
6	AD Administration, address, telephone, telefax, telex, AFS	Director of Betong Airport Betong Airport 125 Moo.8, Yarom Betong Yala 95110 Thailand
7	Types of traffic permitted (IFR/VFR)	IFR/VFR
8	Remarks	Operator: Department of Airports

## VTSY AD 2.3 OPERATIONAL HOURS

1	AD Administration	0130 - 0930
2	Customs and immigration	NIL
3	Health and sanitation	NIL
4	AIS Briefing Office	NIL
5	ATS Reporting Office (ARO)	NIL
6	MET Briefing Office	NIL
7	ATS	0130 - 0930
8	Fuelling	NIL
9	Handling	NIL
10	Security	0130 - 0930
11	De-icing	NIL
12	Remarks	NIL

## VTSY AD 2.4 HANDLING SERVICES AND FACILITIES

1	Cargo-handling facilities	NIL
2	Fuel/oil types	NIL
3	Fuelling facilities/capacity	NIL
4	De-icing facilities	NIL
5	Hangar space for visiting aircraft	NIL
6	Repair facilities for visiting aircraft	NIL
7	Remarks	NIL

**VTSY AD 2.5 PASSENGER FACILITIES**

1	Hotels	In the city
2	Restaurants	In the city
3	Transportation	NIL
4	Medical facilities	Hospital in the city
5	Bank and Post Office	In the city
6	Tourist Office	NIL
7	Remarks	NIL

**VTSY AD 2.6 RESCUE AND FIRE FIGHTING SERVICES**

1	AD category for fire fighting	Category 5
2	Rescue equipment	Accordance with AD Category 5
3	Capability for removal of disabled aircraft	NIL
4	Remarks	NIL

**VTSY AD 2.7 SEASONAL AVAILABILITY - CLEARING**

1	Types of clearing equipment	NIL
2	Clearance priorities	NIL
3	Remarks	NIL

**VTSY AD 2.8 APRONS, TAXIWAYS AND CHECK LOCATIONS DATA**

1	Apron surface and strength	Surface: Concrete Strength: PCN 23/R/D/X/T
2	Taxiway width, surface and strength	TWY A and B Width: 18 M Surface: Asphalt Strength: PCN 23/F/D/X/T
3	Altimeter checkpoint location and elevation	Location: 054714.33N 1010851.00E 054713.84N 1010849.62E 054713.34N 1010848.25E Elevation: MSL 225.109 M (738.547 FT)
4	VOR checkpoints	NIL
5	INS checkpoints	NIL
6	Remarks	NIL

**VTSY AD 2.9 SURFACE MOVEMENT GUIDANCE AND CONTROL SYSTEM AND MARKINGS**

1	Use of aircraft stand ID signs, TWY guide lines and visual docking/parking guidance system of aircraft stands	Aircraft stand ID signs: Marked TWY guide lines: Yes VDGS of aircraft stands: NIL, aircraft parking shall follow marshaller strictly.
2	RWY and TWY markings and LGT	RWY marking: RWY Designation, THR, TDZ, CL, Aiming Point and Side Stripe RWY LGT: THR, RWY Edge and RWY End TWY marking: CL, Edge, RWY Holding Position and Intermediate Holding Position TWY LGT: TWY Edge
3	Stop bars	NIL
4	Remarks	NIL

**VTSY AD 2.10 AERODROME OBSTACLES**

In approach/TKOF areas			In circling area and at AD		Remarks
1			2		
RWY/Area affected	Obstacle type Elevation Markings/LGT	Coordinates	Obstacle type Elevation Markings/LGT	Coordinates	
a	b	c	a	b	
APCH RWY 07/ TKOF RWY 25	Tree 253.63 M (HGT 28.38 M)	054711.76N 1010817.00E	NIL	NIL	NIL
	Tree 275.27 M (HGT 50.02 M)	054657.63N 1010803.25E			
	Radio Mast 387.41 M (HGT 162.16 M) Marked and LGT	054615.47N 1010356.79E			
	Radio Mast 423.26 M (HGT 198 M) Marked and LGT	054544.82N 1010404.54E			
APCH RWY 25/ TKOF RWY 07	Mountain 415 M (HGT 195.82 M)	See Aerodrome Obstacle Chart - ICAO Type A			
	Mountain 644 M (HGT 424.82 M)				
	Mountain 954 M (HGT 734.82 M)				

VTSY AD 2.11 METEOROLOGICAL INFORMATION PROVIDED

1	Associated MET Office	Aeronautical Meteorological Station-Betong, Southern East-Coast Meteorological Center, Thai Meteorological Department (TMD)
2	Hours of service MET Office outside hours	0000-1000 NIL
3	Office responsible for TAF preparation Periods of validity	Supply TAF from Southern East-Coast Meteorological Center 24 HR
4	Type of landing forecast Interval of issuance	TREND 1 HR
5	Briefing/consultation provided	Personal Consultation Tel: +668 9283 1877
6	Flight documentation Language(s) used	NIL
7	Charts and other information available for briefing or consultation	S, U85, Daily Weather Forecast, satellite and radar images
8	Supplementary equipment available for providing information	Automated Weather Observation System (AWOS)
9	ATS units provided with information	Betong TWR
10	Additional information (limitation of service, etc.)	NIL

VTSY AD 2.12 RUNWAY PHYSICAL CHARACTERISTICS

Designations RWY NR	TRUE & MAG BRG	Dimensions of RWY(M)	Strength (PCN) and surface of RWY and SWY	THR coordinates	THR elevation and highest elevation of TDZ of precision APP RWY
1	2	3	4	5	6
07 (Non-instrument runway)	070.09°	1800x30	PCN 23/F/D/X/T Asphalt	054714.13N 1010834.47E	225.25 M (738 FT)
25 (Non-instrument runway)	250.09°	1800x30	PCN 23/F/D/X/T Asphalt	054733.96N 1010929.53E	219.18 M (719 FT)

Slope of RWY-SWY	SWY dimensions (M)	CWY dimensions (M)	Strip dimensions (M)	RESA dimensions (M)	Location and description of arresting system	OFZ	Remarks
7	8	9	10	11	12	13	14
0.00% -0.63% (690M 1100M)	NIL	NIL	1920x150	240x60	NIL	NIL	NIL
0.63% 0.00% (1100M 690M)	NIL	NIL	1920x150	240x60	NIL	NIL	NIL

VTSY AD 2.13 DECLARED DISTANCES

RWY Designator	TORA (M)	TODA (M)	ASDA (M)	LDA (M)	Remarks
1	2	3	4	5	6
07	1800	1800	1800	1800	NIL
25	1800	1800	1800	1800	NIL

VTSY AD 2.14 APPROACH AND RUNWAY LIGHTING

RWY Designator	APCH LGT type LEN INTST	THR LGT colour WBAR	VASIS (MEHT) PAPI	TDZ, LGT LEN	RWY Centre Line LGT Length, spacing, colour, INTST	RWY edge LGT LEN, spacing, colour INTST	RWY End LGT colour WBAR	SWY LGT LEN (M) colour	Remarks
1	2	3	4	5	6	7	8	9	10
07	SALS 420 M LIH	Green NIL	PAPI Left 3.9° (59.42 FT)	NIL	NIL	1800 M 30 M White, LIH YCZ 600 M	Red NIL	NIL	NIL
25	NIL	Green NIL	PAPI Left 4.7° (42.78 FT)	NIL	NIL	1800 M 30 M White, LIH YCZ 600 M	Red NIL	NIL	1. RTIL 2. Due to mountainous terrains, PAPI RWY 25 is unusable beyond 3 NM and approved only for operation under VFR conditions.

VTSY AD 2.15 OTHER LIGHTING, SECONDARY POWER SUPPLY

1	ABN/IBN location, characteristics and hours of operation	ABN: On top of control tower, FLG W G EV 2 SEC IBN: NIL
2	LDI location and LGT Anemometer location and LGT	LDI: NIL Anemometer: Wind cone at 280 M from THR 07 off set left side 67 M from RCL and wind cone at 155 M from THR 25 off set left side 67 M from RCL
3	TWY edge and centre line lighting	Edge: TWY A and B Centre line: NIL
4	Secondary power supply/switch-over time	Secondary power supply to all lighting at AFL Building Switch-over time: 15 SEC
5	Remarks	NIL

VTSY AD 2.16 HELICOPTER LANDING AREA

1	Coordinates TLOF or THR of FATO	NIL
2	TLOF and/or FATO elevation M/FT	NIL
3	TLOF and FATO area dimensions, surface, strength, marking	NIL
4	True and MAG BRG of FATO	NIL
5	Declared distance available	NIL
6	APP and FATO lighting	NIL
7	Remarks	NIL

VTSY AD 2.17 ATS AIRSPACE

1	Designation and lateral limits	BETONG AERODROME TRAFFIC ZONE (ATZ), a circle radius 5 NM centred on BET DVOR/DME (054707.68N1010838.65E)
2	Vertical limits	4000 FT/AGL
3	Airspace classification	D
4	ATS unit call sign Language(s)	BETONG TOWER English, Thai
5	Transition altitude	11000 FT
6	Remarks	NIL

VTSY AD 2.18 ATS COMMUNICATION FACILITIES

Service designation	Call sign	Frequency	Hours of operation	Remarks
1	2	3	4	5
APP	Narathiwat Approach	125.55 MHZ 121.5 MHZ <sup>1)</sup>	23:00-11:00	<sup>1)</sup> Emergency frequency
TWR	Betong Tower	124.15MHZ 236.6MHZ 121.5 MHZ <sup>1)</sup> 243.0 MHZ <sup>1)</sup>	01:30-09:30	
GND	Betong Ground	122.15 MHZ 121.5 MHZ <sup>1)</sup> 243.0 MHZ <sup>1)</sup>	01:30-09:30	
ATIS	Betong Airport	128.5 MHZ	01:30-09:30	

**VTSY AD 2.19 RADIO NAVIGATION AND LANDING AIDS**

Type of aid, CAT of ILS/MLS (For VOR/ILS/MLS, give VAR)	ID	Frequency	Hours of operation	Site of transmitting antenna coordinates	Elevation of DME transmitting antenna	Remarks
1	2	3	4	5	6	7
DVOR	BET	113.1MHZ	H24	054707.68N 1010838.65E		DVOR/DME restrictions, 1. Due to mountainous terrain surround DVOR/DME station, coverage check does not provide adequate signal to 40 NM at required altitude and distance in various areas as follows: – Radial 350°-020° altitude should not below 8 000 FT – Radial 021°-040° altitude should not below 6 500 FT – Radial 041°-060° altitude should not below 9 000 FT – Radial 061°-075° altitude should not below 15 000 FT – Radial 076°-349° unable to check due to border limit
DME		78X	H24	054707.82N 1010838.27E		DME co-located with DVOR

**VTSY AD 2.20 LOCAL AERODROME REGULATIONS**

**1. 180 DEGREES TURN ON THE RUNWAY**

To prevent runway pavement damage which may result in the closure of the aerodrome if such damage is severe, all aircraft are not allowed to make 180 degrees turn on the runway. The turn shall be made on the runway turn pad located near the threshold of runway 25. Any breach done by the aircraft operator shall be recorded and reported to The Civil Aviation Authority of Thailand (CAAT)/ The Headquarter of that operator shall be liable for the compensation caused by such violation.

**VTSY AD 2.21 NOISE ABATEMENT PROCEDURES**

NIL

**VTSY AD 2.22 FLIGHT PROCEDURES**

NIL

**VTSY AD 2.23 ADDITIONAL INFORMATION**

**1. BIRD CONCENTRATIONS**

- Bird concentrations in the vicinity of an aerodrome.

**VTSY AD 2.24 CHARTS RELATED TO AN AERODROME**

Chart name	Page
Aerodrome Chart - ICAO	AD 2-VTSY-2-1
Aerodrome Obstacle Chart - ICAO Type A - RWY 07/25	AD 2-VTSY-3-1
Aerodrome Obstacle Chart - ICAO Type B	AD 2-VTSY-3-3
Standard Departure Chart - Instrument (SID) - ICAO - RNAV RWY 07 - ERVES1A PETAC1A	AD 2-VTSY-6-1
Standard Departure Chart - Instrument (SID) - ICAO - RNAV RWY 07 - ERVES1A PETAC1A (Tabular description)	AD 2-VTSY-6-2

<b>Chart name</b>	<b>Page</b>
Standard Departure Chart - Instrument (SID) - ICAO - RNAV RWY 25 - ERVES1B PETAC1B	AD 2-VTSY-6-3
Standard Departure Chart - Instrument (SID) - ICAO - RNAV RWY 25 - ERVES1B PETAC1B (Tabular description)	AD 2-VTSY-6-4
Instrument Approach Chart - ICAO - VOR a	AD 2-VTSY-8-1
Instrument Approach Chart - ICAO - VOR a (Fix and point list table)	AD 2-VTSY-8-2
Instrument Approach Chart - ICAO - RNP a	AD 2-VTSY-8-3
Instrument Approach Chart - ICAO - RNP a (Tabular description)	AD 2-VTSY-8-4



**AERODROME CHART - ICAO**

**05 47 19.64 N**  
**101 08 49.77 E**

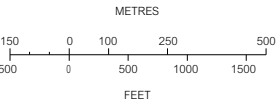
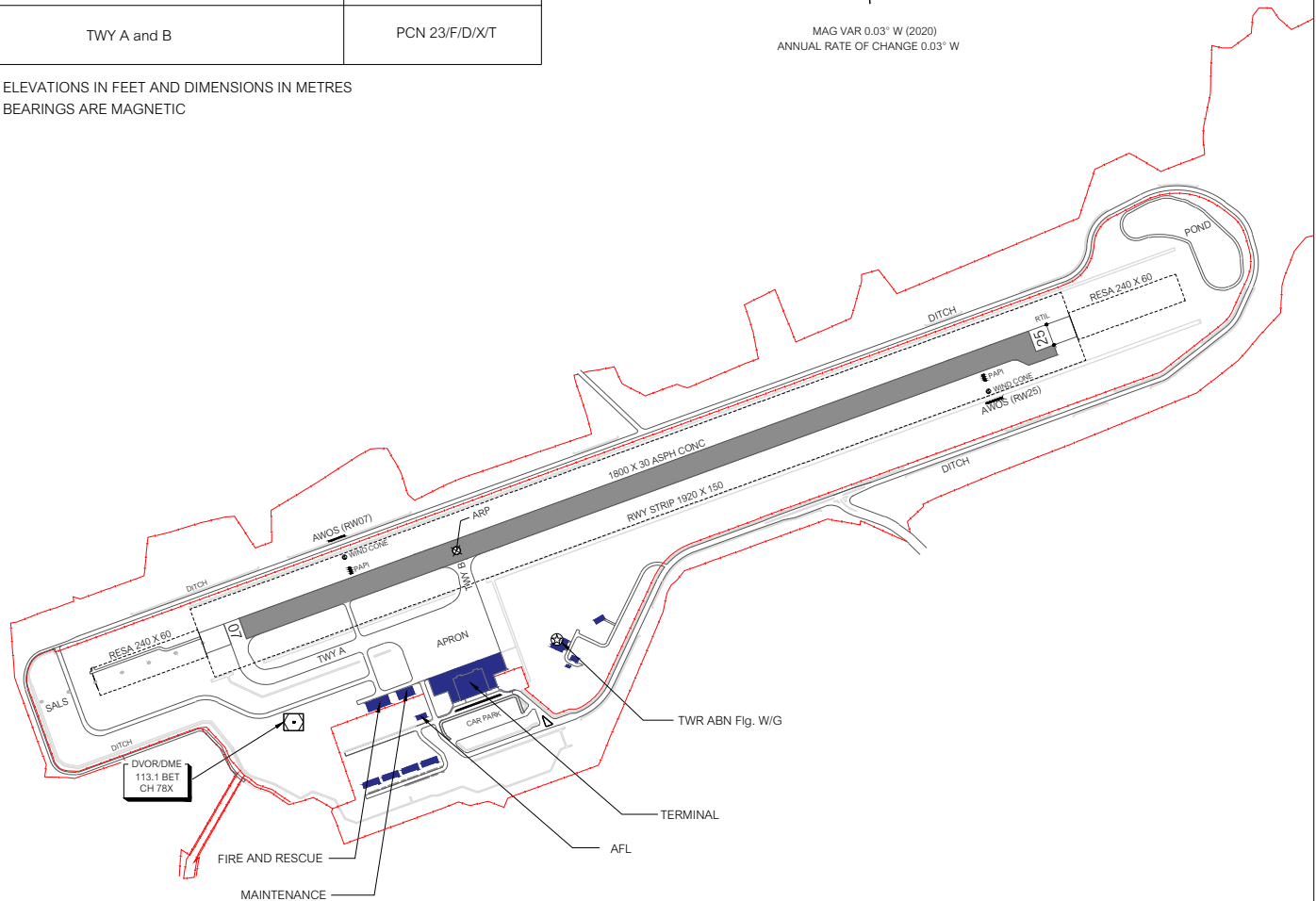
**ELEV 738 FT**  
**225 m**

**TWR 124.15**

**YALA / Betong**

RWY	DIRECTION (TRUE BRG)	THR	BEARING STRENGTH
07	70.09	05 47 14.13 N	PCN 23/F/D/X/T
		101 08 34.47 E	
25	250.09	05 47 33.96 N	
		101 09 29.53 E	
APRON			PCN 23/R/D/X/T
TWY A and B			PCN 23/F/D/X/T

ELEVATIONS IN FEET AND DIMENSIONS IN METRES  
BEARINGS ARE MAGNETIC

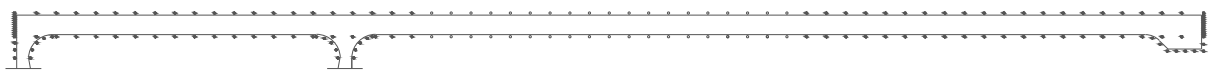


Remark : COORDINATE ARE WGS-84

MARKING AIDS RWY 07/25 AND EXIT TWY



LIGHTING AIDS RWY 07/25 AND EXIT TWY



CHANGE: PAPI 07/25, ADDED.

**INTENTIONALLY BLANK**

**AERODROME OBSTACLE CHART - ICAO**  
TYPE A (OPERATIONAL LIMITATIONS)

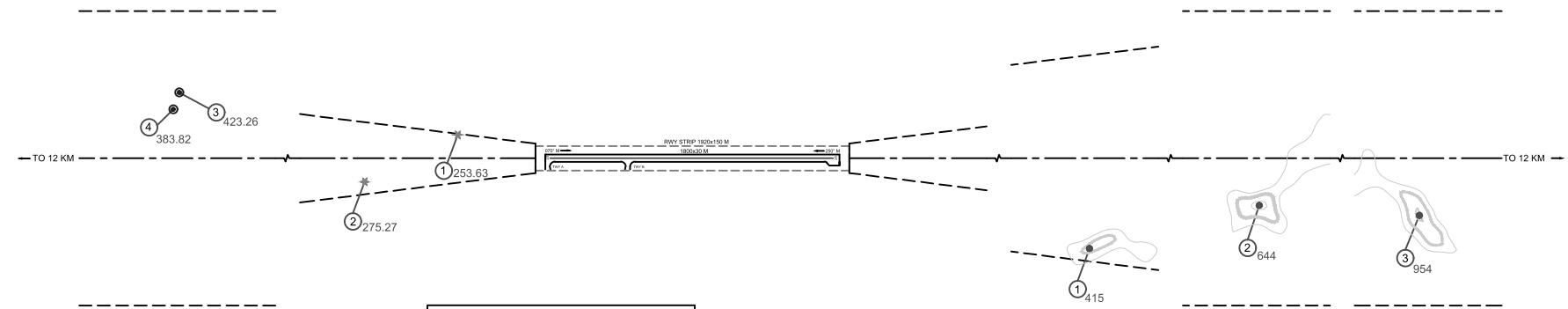
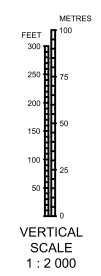
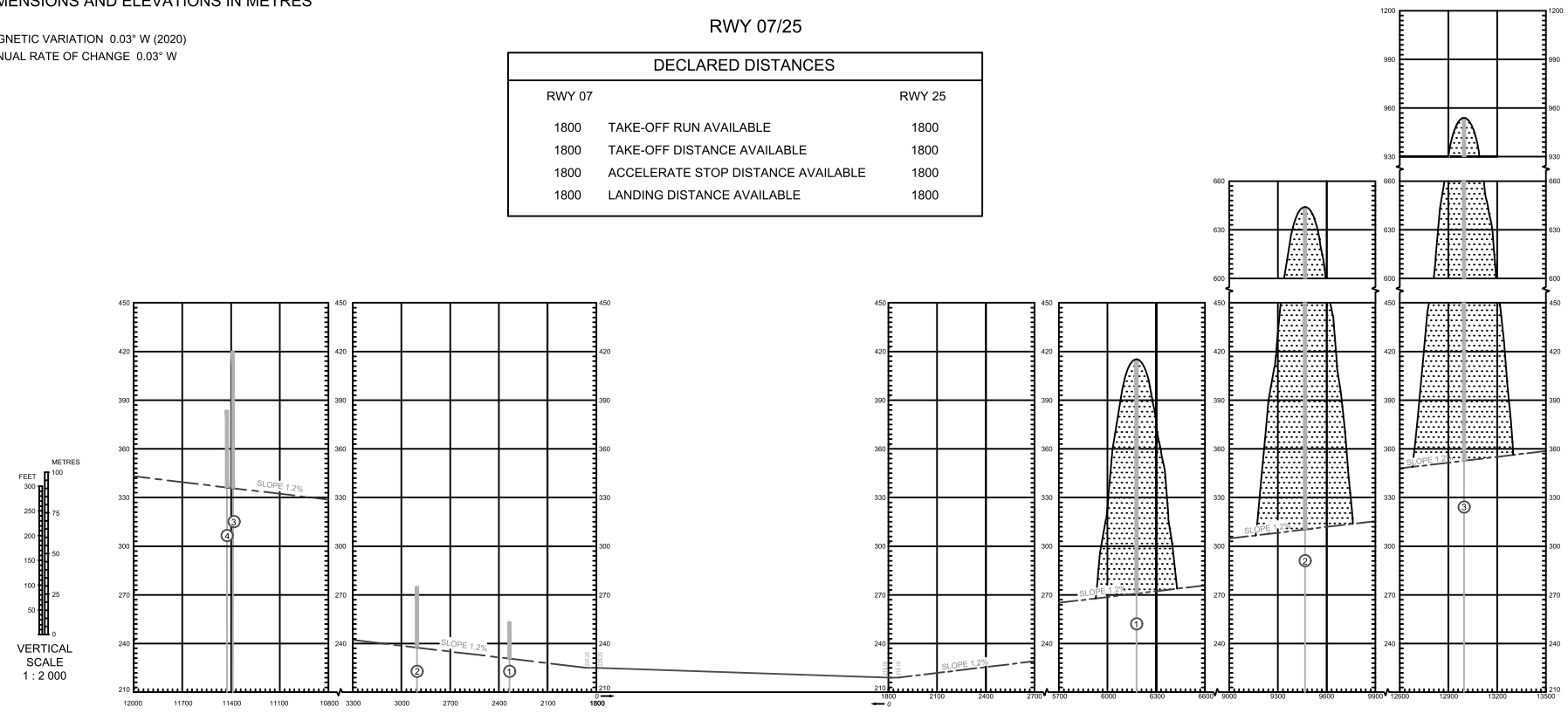
YALA / Betong Airport

DIMENSIONS AND ELEVATIONS IN METRES

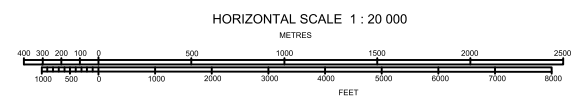
MAGNETIC VARIATION 0.03° W (2020)  
ANNUAL RATE OF CHANGE 0.03° W

RWY 07/25

DECLARED DISTANCES		
RWY 07		RWY 25
1800	TAKE-OFF RUN AVAILABLE	1800
1800	TAKE-OFF DISTANCE AVAILABLE	1800
1800	ACCELERATE STOP DISTANCE AVAILABLE	1800
1800	LANDING DISTANCE AVAILABLE	1800



LEGEND	
IDENTIFICATION NUMBER	○
POLE, TOWER, SPIRE, ANTENNA, ETC.	●
TERRAIN PENETRATING OBSTACLE PLANE	⬆
TERRAIN CONTOUR	⌒
TREE OR SHRUB	*



CHNAGE: NEW CHART.

**INTENTIONALLY BLANK**



**INTENTIONALLY BLANK**

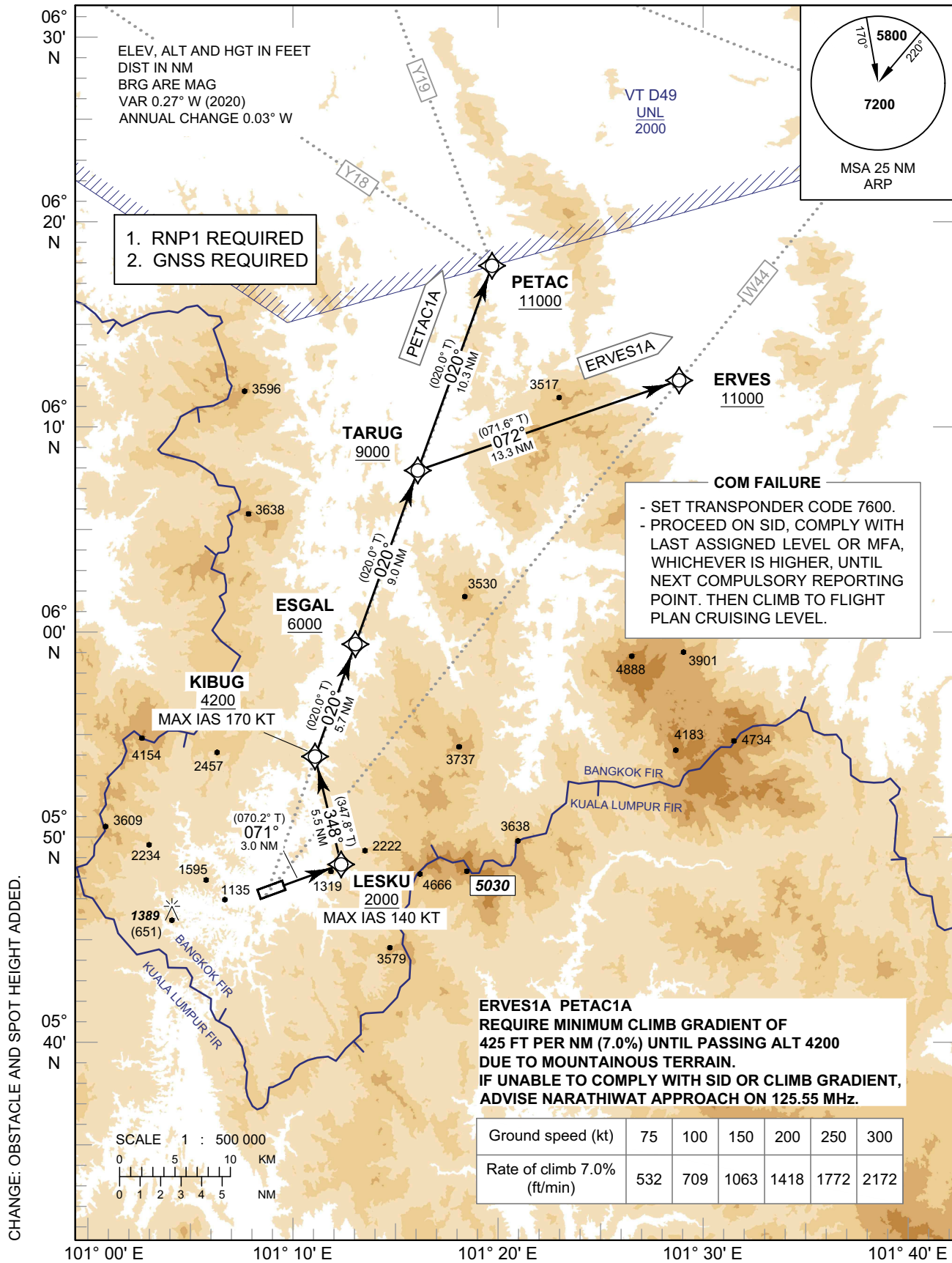
**STANDARD DEPARTURE CHART  
INSTRUMENT (SID) - ICAO**

TRANSITION ALTITUDE  
11000

APP : 125.55  
TWR : 124.15, 236.6  
GND : 122.15  
ATIS : 128.50

**YALA / Betong (VTSY)  
RNAV RWY07**

ERVES1A PETAC1A



STANDARD DEPARTURE CHART  
INSTRUMENT (SID) - ICAO

YALA / Betong (VTSY)  
RNAV RWY07

ERVES1A PETAC1A

TABULAR DESCRIPTION

RNAV RWY07											
Serial	Path	Waypoint Identifier	Flyover	Course	Magnetic	Distance	Turn	Altitude	Speed	VPA/	Navigation
Number	Descriptor			° M (° T)	Variation	(NM)	Direction	(FT)	(KT)	TCH	Specification
ERVES1A											
010	-	DER RWY07	-	-	+0.27	-	-	-	-	-	RNP 1
020	CF	LESKU	-	071°(070.2°)	+0.27	3.0	-	+2000	-140	-	RNP 1
030	TF	KIBUG	-	348°(347.8°)	+0.27	5.5	-	+4200	-170	-	RNP 1
040	TF	ESGAL	-	020°(020.0°)	+0.27	5.7	-	+6000	-	-	RNP 1
050	TF	TARUG	-	020°(020.0°)	+0.27	9.0	-	+9000	-	-	RNP 1
060	TF	ERVES	-	072°(071.6°)	+0.27	13.3	-	+11000	-	-	RNP 1
PETAC1A											
010	-	DER RWY07	-	-	+0.27	-	-	-	-	-	RNP 1
020	CF	LESKU	-	071°(070.2°)	+0.27	3.0	-	+2000	-140	-	RNP 1
030	TF	KIBUG	-	348°(347.8°)	+0.27	5.5	-	+4200	-170	-	RNP 1
040	TF	ESGAL	-	020°(020.0°)	+0.27	5.7	-	+6000	-	-	RNP 1
050	TF	TARUG	-	020°(020.0°)	+0.27	9.0	-	+9000	-	-	RNP 1
060	TF	PETAC	-	020°(020.0°)	+0.27	10.3	-	+11000	-	-	RNP 1

WAYPOINT LIST

RNAV RWY07	
Waypoint Identifier	Coordinates
DER RWY07	05° 47' 33.96" N 101° 09' 29.53" E
ERVES	06° 12' 07.88" N 101° 28' 53.20" E
ESGAL	05° 59' 24.18" N 101° 13' 06.39" E
KIBUG	05° 54' 01.26" N 101° 11' 08.97" E
LESKU	05° 48' 35.15" N 101° 12' 19.48" E
PETAC	06° 17' 39.82" N 101° 19' 45.08" E
TARUG	06° 07' 54.03" N 101° 16' 11.86" E



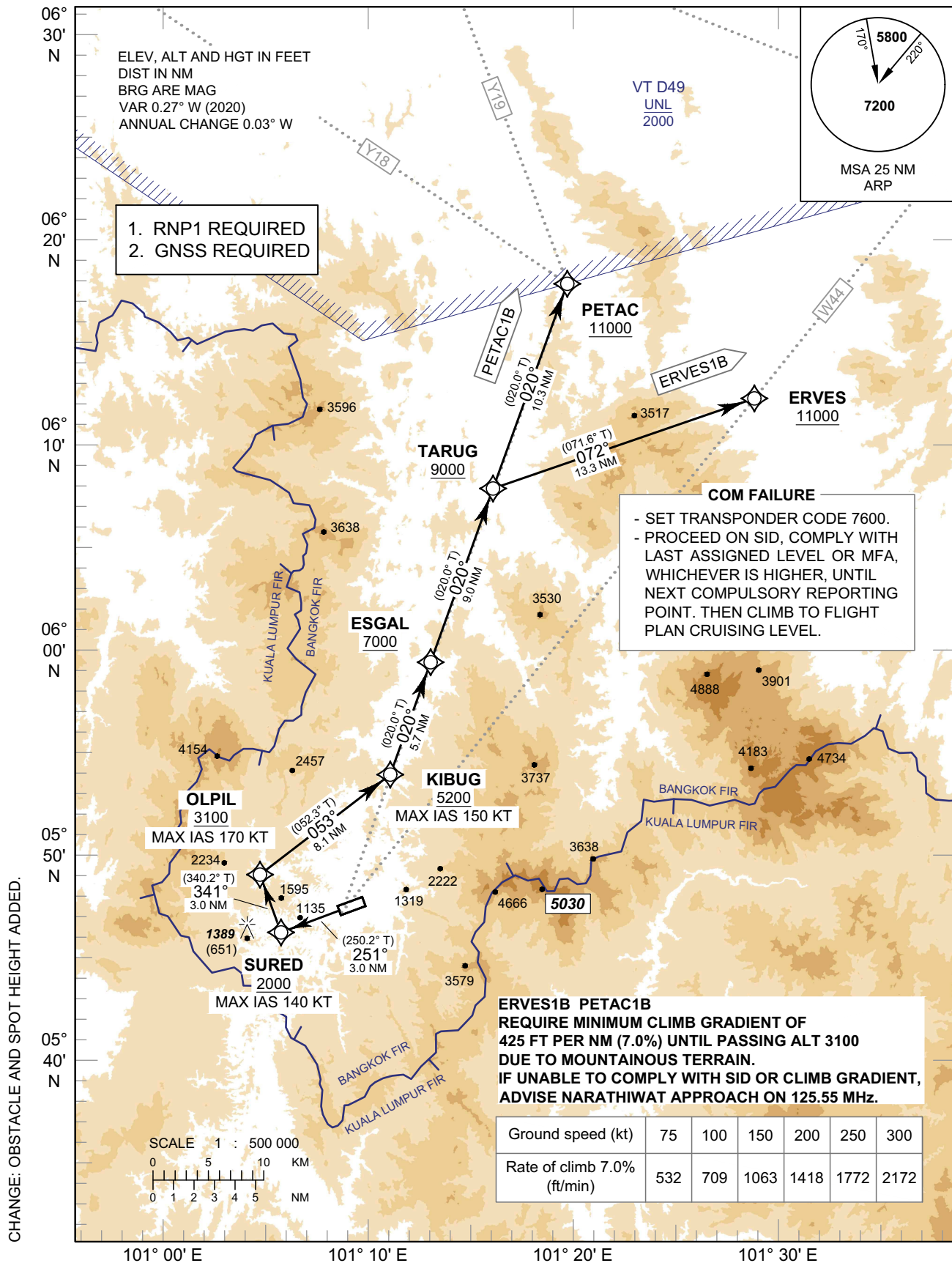
**STANDARD DEPARTURE CHART  
INSTRUMENT (SID) - ICAO**

TRANSITION ALTITUDE  
11000

APP : 125.55  
TWR : 124.15, 236.6  
GND : 122.15  
ATIS : 128.50

**YALA / Betong (VTSY)  
RNAV RWY25**

ERVES1B PETAC1B



STANDARD DEPARTURE CHART  
INSTRUMENT (SID) - ICAO

YALA / Betong (VTSY)  
RNAV RWY25

ERVES1B PETAC1B

TABULAR DESCRIPTION

RNAV RWY25											
Serial	Path	Waypoint Identifier	Flyover	Course	Magnetic	Distance	Turn	Altitude	Speed	VPA/	Navigation
Number	Descriptor			° M (° T)	Variation	(NM)	Direction	(FT)	(KT)	TCH	Specification
ERVES1B											
010	-	DER RWY25	-	-	+0.27	-	-	-	-	-	RNP 1
020	CF	SURED	-	251°(250.2°)	+0.27	3.0	-	+2000	-140	-	RNP 1
030	TF	OLPIL	-	341°(340.2°)	+0.27	3.0	-	+3100	-170	-	RNP 1
040	TF	KIBUG	-	053°(052.3°)	+0.27	8.1	-	+5200	-170	-	RNP 1
050	TF	ESGAL	-	020°(020.0°)	+0.27	5.7	-	+7000	-	-	RNP 1
060	TF	TARUG	-	020°(020.0°)	+0.27	9.0	-	+9000	-	-	RNP 1
070	TF	ERVES	-	072°(071.6°)	+0.27	13.3	-	+11000	-	-	RNP 1
PETAC1B											
010	-	DER RWY25	-	-	+0.27	-	-	-	-	-	RNP 1
020	CF	SURED	-	251°(250.2°)	+0.27	3.0	-	+2000	-140	-	RNP 1
030	TF	OLPIL	-	341°(340.2°)	+0.27	3.0	-	+3100	-170	-	RNP 1
040	TF	KIBUG	-	053°(052.3°)	+0.27	8.1	-	+5200	-170	-	RNP 1
050	TF	ESGAL	-	020°(020.0°)	+0.27	5.7	-	+7000	-	-	RNP 1
060	TF	TARUG	-	020°(020.0°)	+0.27	9.0	-	+9000	-	-	RNP 1
070	TF	PETAC	-	020°(020.0°)	+0.27	10.3	-	+11000	-	-	RNP 1

WAYPOINT LIST

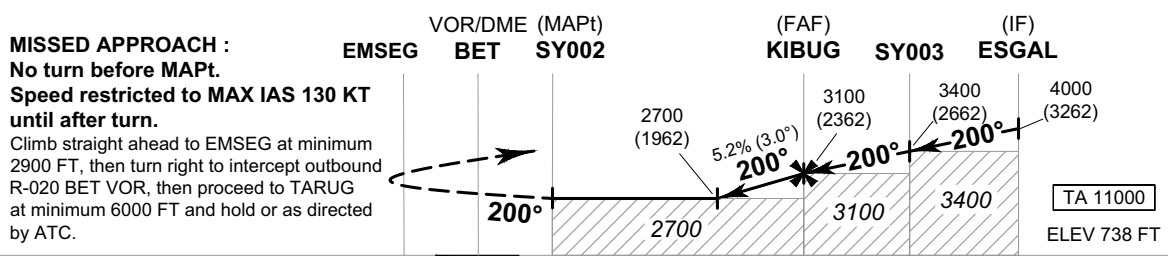
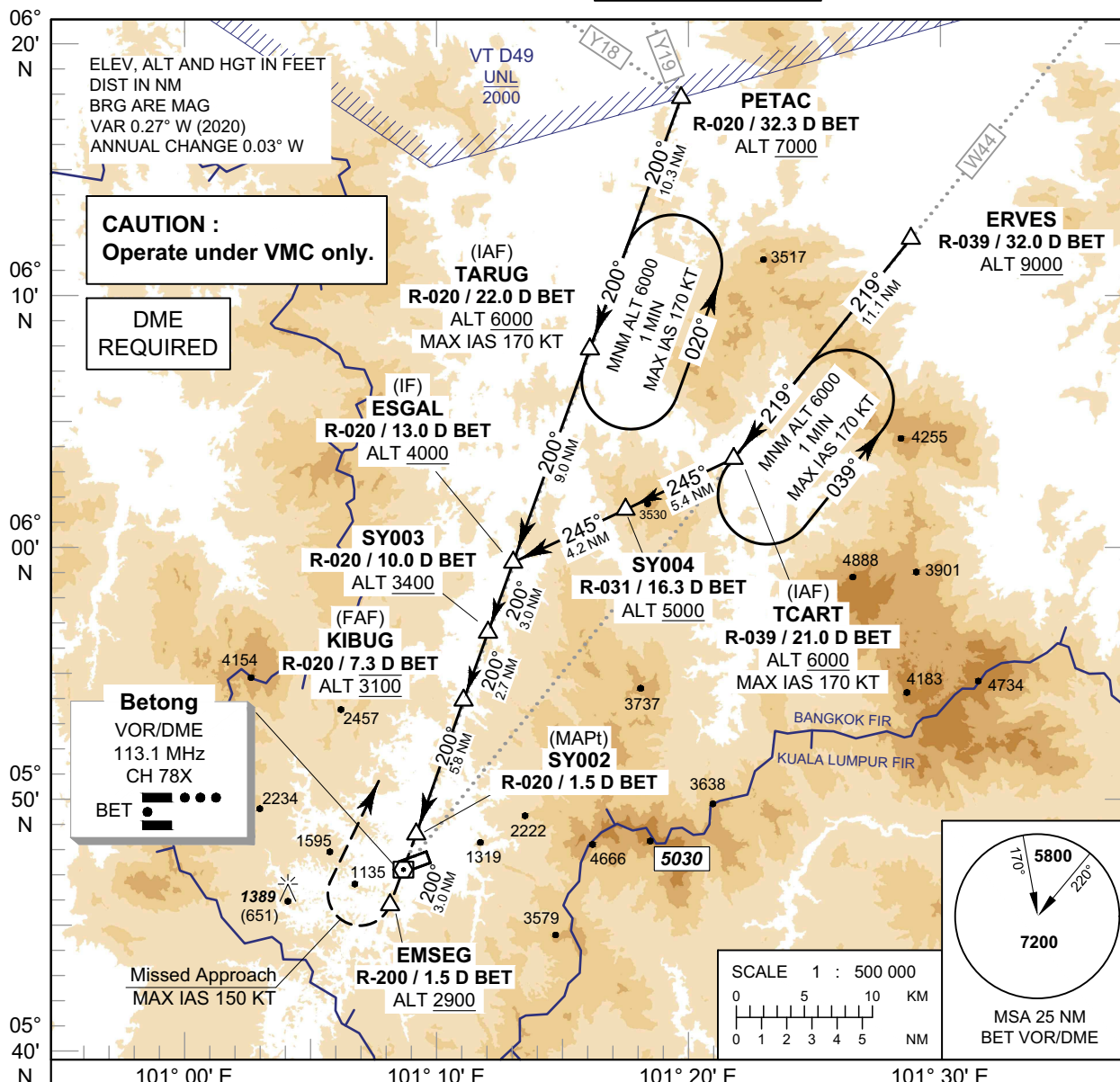
RNAV RWY25	
Waypoint Identifier	Coordinates
DER RWY25	05° 47' 14.13" N 101° 08' 34.47" E
ERVES	06° 12' 07.88" N 101° 28' 53.20" E
ESGAL	05° 59' 24.18" N 101° 13' 06.39" E
KIBUG	05° 54' 01.26" N 101° 11' 08.97" E
OLPIL	05° 49' 03.10" N 101° 04' 43.36" E
PETAC	06° 17' 39.82" N 101° 19' 45.08" E
SURED	05° 46' 12.92" N 101° 05' 44.54" E
TARUG	06° 07' 54.03" N 101° 16' 11.86" E

**INSTRUMENT  
APPROACH  
CHART - ICAO**

**AERODROME ELEV 738 FT  
HEIGHTS RELATED TO  
AERODROME ELEV**

APP : 125.55  
TWR : 124.15, 236.6  
GND : 122.15  
ATIS : 128.50

**YALA / Betong (VTSY)  
VOR a**



OCA/H	A	B	C	Distance (BET)	6.1 D	7.0 D	FAF
Straight - in approach	Not authorized			Altitude (Height)	2700 (1962)	3000 (2262)	3100 (2362)
				Ground speed	knot 70	90	100 120 140 160
Circling (OCH AAL)	2700 (1962)			Rate of descent (5.2%)	ft/min 369	474 527 632	737 843

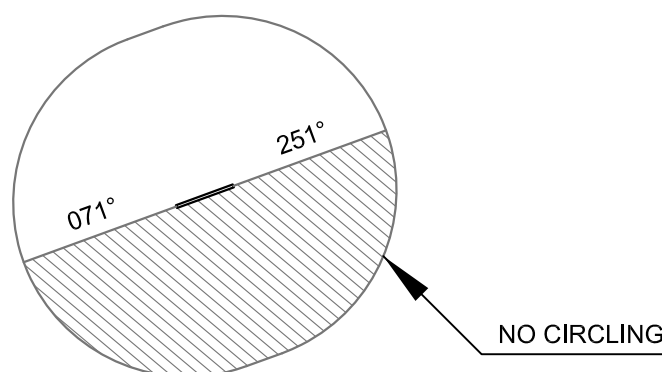
**REMARK :** 1. FOR CIRCLING RESTRICTION, SEE VERSO.  
2. TAKE CAUTION TO REMAIN WITHIN BANGKOK FIR WHILE CIRCLING AND MISSED APPROACH DUE TO PROXIMITY OF KUALA LUMPUR FIR.  
3. LANDING DISTANCE AVAILABLE (LDA) IS 1,800 m.

CHANGE: OBSTACLE AND SPOT HEIGHT ADDED.

**INSTRUMENT APPROACH CHART - ICAO**  
**AERODROME ELEV 738 FT**  
HEIGHTS RELATED TO  
AERODROME ELEV

**YALA / Betong (VTSY)**  
**VOR a**

FIX / POINT		COORDINATES	
ERVES	R-039 / 32.0 D BET	06° 12' 07.88" N	101° 28' 53.20" E
PETAC	R-020 / 32.3 D BET	06° 17' 39.82" N	101° 19' 45.08" E
(IAF) TARUG	R-020 / 22.0 D BET	06° 07' 54.03" N	101° 16' 11.86" E
(IAF) TCART	R-039 / 21.0 D BET	06° 03' 30.16" N	101° 21' 53.78" E
SY004	R-031 / 16.3 D BET	06° 01' 11.86" N	101° 16' 57.21" E
(IF) ESGAL	R-020 / 13.0 D BET	05° 59' 24.18" N	101° 13' 06.39" E
SY003	R-020 / 10.0 D BET	05° 56' 34.22" N	101° 12' 04.58" E
(FAF) KIBUG	R-020 / 7.3 D BET	05° 54' 01.26" N	101° 11' 08.97" E
(MAPt) SY002	R-020 / 1.5 D BET	05° 48' 32.67" N	101° 09' 09.54" E
VOR	BET	05° 47' 07.68" N	101° 08' 38.65" E
EMSEG	R-200 / 1.5 D BET	05° 45' 42.70" N	101° 08' 07.77" E

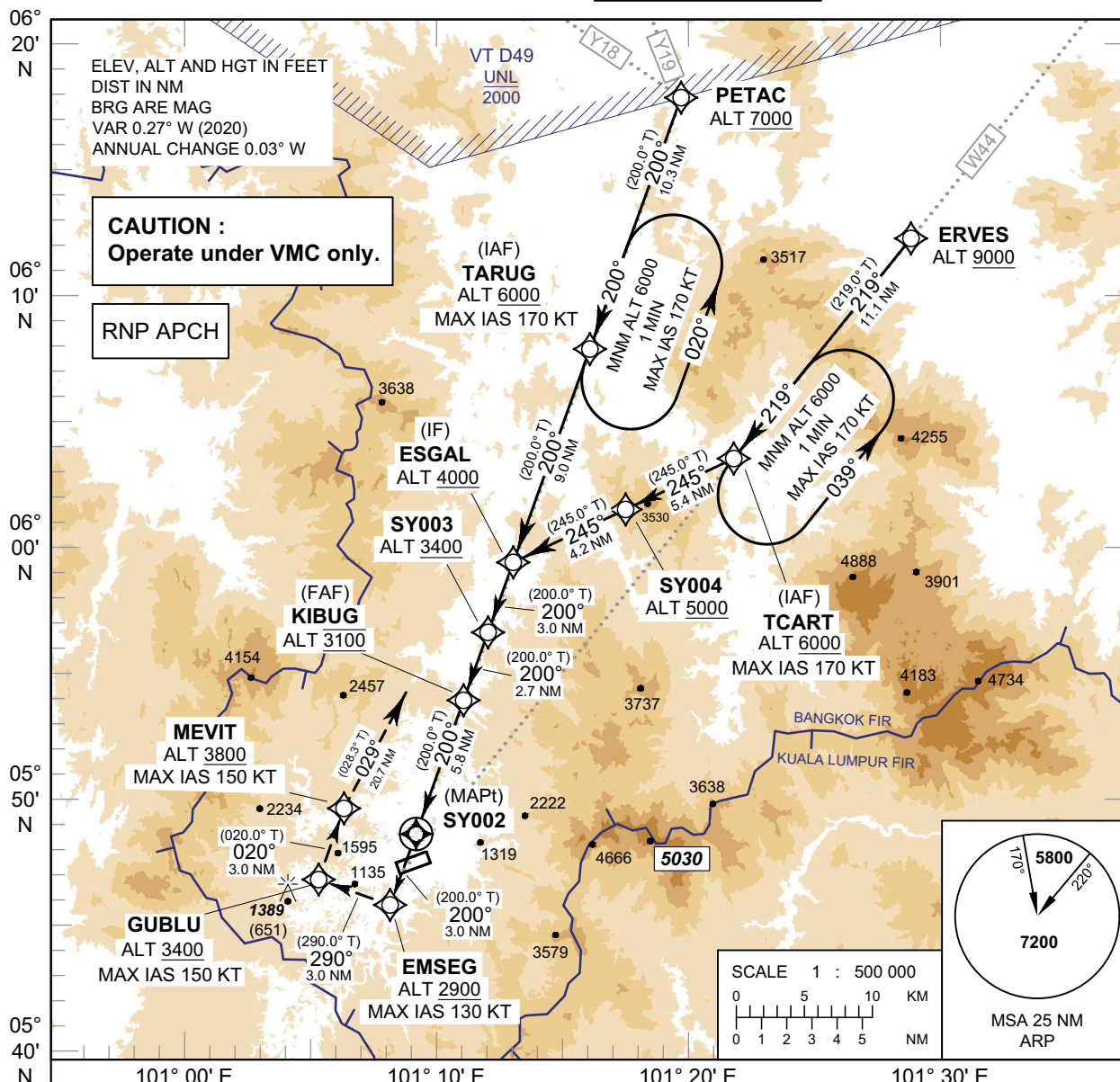


**INSTRUMENT  
APPROACH  
CHART - ICAO**

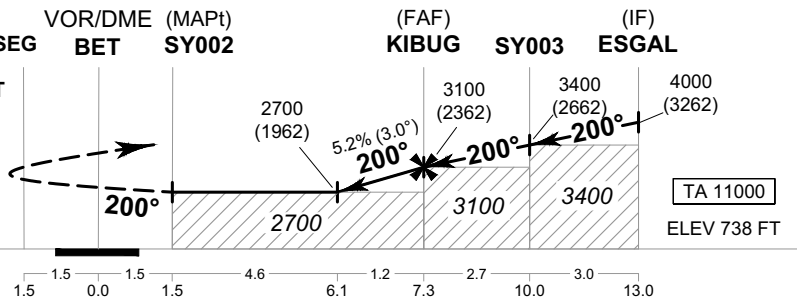
**AERODROME ELEV 738 FT  
HEIGHTS RELATED TO  
AERODROME ELEV**

APP : 125.55  
TWR : 124.15, 236.6  
GND : 122.15  
ATIS : 128.50

**YALA / Betong (VTSY)  
RNP a**



**MISSED APPROACH :**  
No turn before MAPt.  
Speed restricted to MAX IAS 130 KT until after turn.  
Climb on track 200° to EMSEG at minimum 2900 FT, then turn right to GUBLU, then turn right to MEVIT. Finally, proceed to TARUG at minimum 6000 FT and hold or as directed by ATC.



OCA/H	A	B	C	NM to NEXT WPT	6.1 NM	7.0 NM	FAF
	Not authorized			Altitude (Height)	2700 (1962)	3000 (2262)	3100 (2362)
LNAV	Not authorized						
Circling (OCH AAL)	2700 (1962)			FAF - MAPt 5.2%	ft/min	369	474
						527	632
						737	843

**REMARK :** 1. FOR CIRCLING RESTRICTION, SEE VERSO.  
2. TAKE CAUTION TO REMAIN WITHIN BANGKOK FIR WHILE CIRCLING AND MISSED APPROACH DUE TO PROXIMITY OF KUALA LUMPUR FIR.  
3. LANDING DISTANCE AVAILABLE (LDA) IS 1,800 m.

CHANGE: OBSTACLE AND SPOT HEIGHT ADDED.

**INSTRUMENT APPROACH CHART - ICAO**  
**AERODROME ELEV 738 FT**  
**HEIGHTS RELATED TO AERODROME ELEV**

**YALA / Betong (VTSY)**  
**RNP a**

**TABULAR DESCRIPTION**

RNP a											
Serial Number	Path Descriptor	Waypoint Identifier	Flyover	Course ° M (° T)	Magnetic Variation	Distance (NM)	Turn Direction	Altitude (FT)	Speed (KT)	VPA/ TCH	Navigation Specification
010	IF	ERVES	-	-	+0.27	-	-	+9000	-	-	RNP APCH
020	TF	TCART (IAF)	-	219°(219.0°)	+0.27	11.1	-	+6000	-170	-	RNP APCH
030	TF	SY004	-	245°(245.0°)	+0.27	5.4	-	+5000	-	-	RNP APCH
040	TF	ESGAL (IF)	-	245°(245.0°)	+0.27	4.2	-	+4000	-	-	RNP APCH
010	IF	PETAC	-	-	+0.27	-	-	+7000	-	-	RNP APCH
020	TF	TARUG (IAF)	-	200°(200.0°)	+0.27	10.3	-	+6000	-170	-	RNP APCH
030	TF	ESGAL (IF)	-	200°(200.0°)	+0.27	9.0	-	+4000	-	-	RNP APCH
010	IF	ESGAL (IF)	-	-	+0.27	-	-	+4000	-	-	RNP APCH
020	TF	SY003	-	200°(200.0°)	+0.27	3.0	-	+3400	-	-	RNP APCH
030	TF	KIBUG (FAF)	-	200°(200.0°)	+0.27	2.7	-	@3100	-	-	RNP APCH
040	TF	SY002 (MAPt)	Y	200°(200.0°)	+0.27	5.8	-	@2700	-	-	RNP APCH
050	CF	EMSEG	-	200°(200.0°)	+0.27	3.0	-	+2900	-130	-	RNP APCH
060	TF	GUBLU	-	290°(290.0°)	+0.27	3.0	-	+3400	-150	-	RNP APCH
070	TF	MEVIT	-	020°(020.0°)	+0.27	3.0	-	+3800	-150	-	RNP APCH
080	TF	TARUG (IAF)	-	029°(028.3°)	+0.27	20.7	-	+6000	-170	-	RNP APCH
090	HM	TARUG (IAF)	Y	200°(200.0°)	+0.27	1 minute	L	+6000	-170	-	RNP APCH

**WAYPOINT LIST**

RNP a	
Waypoint Identifier	Coordinates
EMSEG	05° 45' 42.70" N 101° 08' 07.77" E
ERVES	06° 12' 07.88" N 101° 28' 53.20" E
ESGAL	05° 59' 24.18" N 101° 13' 06.39" E
GUBLU	05° 46' 44.55" N 101° 05' 18.06" E
KIBUG	05° 54' 01.26" N 101° 11' 08.97" E
MEVIT	05° 49' 34.52" N 101° 06' 19.81" E
PETAC	06° 17' 39.82" N 101° 19' 45.08" E
SY002	05° 48' 32.67" N 101° 09' 09.54" E
SY003	05° 56' 34.22" N 101° 12' 04.58" E
SY004	06° 01' 11.86" N 101° 16' 57.21" E
TARUG	06° 07' 54.03" N 101° 16' 11.86" E
TCART	06° 03' 30.16" N 101° 21' 53.78" E

