

VTPT AD 2.1 AERODROME LOCATION INDICATOR AND NAME

VTPT - TAK / TAK AIRPORT

VTPT AD 2.2 AERODROME GEOGRAPHICAL AND ADMINISTRATIVE DATA

| | | |
|---|--|--|
| 1 | ARP coordinates and site at AD | 165345.55N 0991513.42E |
| 2 | Direction and distance from (city) | 15 KM E, from city |
| 3 | Elevation/Reference temperature | 478 FT/38°C |
| 4 | Geoid Undulation at AD ELEV PSN | NIL |
| 5 | MAG VAR/Annual change | 0.72°W(2016)/0.01°E |
| 6 | AD Administration, address, telephone, telefax, telex, AFS | Director of Tak Airport Tak Airport Amphoe Muang Tak Province 63000 Thailand Tel: +665 551 2603 Fax: +665 551 4059 AFS: VTPTYDYX |
| 7 | Types of traffic permitted (IFR/VFR) | IFR/VFR |
| 8 | Remarks | Operator: Department of Airports |

VTPT AD 2.3 OPERATIONAL HOURS

| | | |
|----|----------------------------|---|
| 1 | Aerodrome Operator | 2300-1100 |
| 2 | Customs and immigration | NIL |
| 3 | Health and sanitation | NIL |
| 4 | AIS Briefing Office | NIL |
| 5 | ATS Reporting Office (ARO) | 2300-1100 |
| 6 | MET Briefing Office | NIL |
| 7 | ATS | Available on request 3 hours prior notice required in-advance to Phitsanulok approach control center via AFTN: VTTPZAZX VTTPPZTZX or FAX: +665 525 3016 |
| 8 | Fuelling | NIL |
| 9 | Handling | NIL |
| 10 | Security | NIL |
| 11 | De-icing | NIL |
| 12 | Remarks | ATS Reporting Office (ARO): Located at Phitsanulok Airport (1st floor of airport building) Tel: +665 530 1078 +669 2262 3140 Fax: +665 530 1077 |

VTPT AD 2.4 HANDLING SERVICES AND FACILITIES

| | | |
|---|---|-----|
| 1 | Cargo-handling facilities | NIL |
| 2 | Fuel/oil types | NIL |
| 3 | Fuelling facilities/capacity | NIL |
| 4 | De-icing facilities | NIL |
| 5 | Hangar space for visiting aircraft | NIL |
| 6 | Repair facilities for visiting aircraft | NIL |
| 7 | Remarks | NIL |

VTPT AD 2.5 PASSENGER FACILITIES

| | | |
|---|----------------------|-------------|
| 1 | Hotels | In the city |
| 2 | Restaurants | In the city |
| 3 | Transportation | NIL |
| 4 | Medical facilities | NIL |
| 5 | Bank and Post Office | NIL |
| 6 | Tourist Office | NIL |
| 7 | Remarks | NIL |

VTPT AD 2.6 RESCUE AND FIRE FIGHTING SERVICES

| | | |
|---|---|-----|
| 1 | AD category for fire fighting | NIL |
| 2 | Rescue equipment | NIL |
| 3 | Capability for removal of disabled aircraft | NIL |
| 4 | Remarks | NIL |

VTPT AD 2.7 SEASONAL AVAILABILITY - CLEARING

| | | |
|---|-----------------------------|--|
| 1 | Types of clearing equipment | NIL |
| 2 | Clearance priorities | NIL |
| 3 | Remarks | The aerodrome is available all seasons |

VTPT AD 2.8 APRONS, TAXIWAYS AND CHECK LOCATIONS/POSITIONS DATA

| | | |
|---|---|--|
| 1 | Apron surface and strength | Surface: Concrete and asphalt Strength: PCN 16/F/C/X/T |
| 2 | Taxiway width, surface and strength | Width: 15 M Surface: Concrete and asphalt Strength: PCN 16/F/C/X/T |
| 3 | Altimeter checkpoint location and elevation | NIL |
| 4 | VOR checkpoints | NIL |
| 5 | INS checkpoints | NIL |
| 6 | Remarks | NIL |

VTPT AD 2.9 SURFACE MOVEMENT GUIDANCE AND CONTROL SYSTEM AND MARKINGS

| | | |
|---|---|---------------------|
| 1 | Use of aircraft stand ID signs, TWY guide lines and visual docking/parking guidance system of aircraft stands | NIL |
| 2 | RWY and TWY markings and LGT | RWY and TWY: Marked |
| 3 | Stop bars | NIL |
| 4 | Remarks | NIL |

VTPT AD 2.10 AERODROME OBSTACLES

| In approach/TKOF areas | | | In circling areas and at AD | | Remarks |
|------------------------|---|------------------|--|-------------|--|
| 1 | | | 2 | | |
| RWY/Area affected | Obstacle type Elevation Markings/LGT | Coordinates | Obstacle type Elevation Markings/LGT | Coordinates | |
| a | b | c | a | b | |
| - | Radio mast HGT 98 FT, painted red/white LGTD on top | 164000N 0983300E | NIL | NIL | 1. DIST 600 M on radial 340 FM MST DVOR |
| | Radio mast HGT 82 FT, painted red/white LGTD on top | 164207N 0983218E | | | 2. DIST 1300 m on radial 270 FM MST DVOR |
| | *2 Radio mast HGT 60 M (See RMK) | | | | 3. Both painted red/white LGTD on top |

VTPT AD 2.11 METEOROLOGICAL INFORMATION PROVIDED

| | | |
|----|---|---|
| 1 | Associated MET Office | Aeronautical Meteorological Station-Tak, Northern Meteorological Center, Thai Meteorological Department (TMD) |
| 2 | Hours of service MET Office outside hours | 2200-1100 NIL |
| 3 | Office responsible for TAF preparation Periods of validity | Supply TAF from Northern Meteorological Center 24 HR |
| 4 | Type of landing forecast Interval of issuance | TREND 1 HR |
| 5 | Briefing/consultation provided | Personal Consultation Tel: +665 551 1967 |
| 6 | Flight documentation Language(s) used | NIL |
| 7 | Charts and other information available for briefing or consultation | S, U85, Daily Weather Forecast, satellite and radar images |
| 8 | Supplementary equipment available for providing information | Barometer, Anemometer and Thermometer Screen |
| 9 | ATS units provided with information | Tak TWR |
| 10 | Additional information (limitation of service, etc.) | NIL |

VTPT AD 2.12 RUNWAY PHYSICAL CHARACTERISTICS

| Designations RWY NR | TRUE BRG | Dimensions of RWY(M) | Strength (PCN) and surface of RWY and SWY | THR coordinates RWY end coordinates THR geoid undulation | THR elevation and highest elevation of TDZ of precision APP RWY |
|------------------------|----------|-------------------------|---|--|---|
| 1 | 2 | 3 | 4 | 5 | 6 |
| 09 | 090.54° | 1500x30 | PCN 16/F/C/X/T Concrete and asphalt | 165345.68N 0991446.72E | THR 469 FT TDZ 473 FT |
| 27 | 270.54° | 1500x30 | PCN 16/F/C/X/T Concrete and asphalt | 165345.43N 0991537.41E | THR 478 FT TDZ 478 FT |

| Slope of RWY-SWY | SWY dimensions (M) | CWY dimensions (M) | Strip dimensions (M) | OFZ | Remarks |
|------------------|-----------------------|-----------------------|-------------------------|-----|---------|
| 7 | 8 | 9 | 10 | 11 | 12 |
| NIL | 75x45 | NIL | 1770x150 | NIL | NIL |
| NIL | 75x45 | NIL | 1770x150 | NIL | NIL |

VTPT AD 2.13 DECLARED DISTANCES

| RWY Designator | TORA (M) | TODA (M) | ASDA (M) | LDA (M) | Remarks |
|-------------------|-------------|-------------|-------------|------------|---------|
| 1 | 2 | 3 | 4 | 5 | 6 |
| 09 | 1500 | 1500 | 1575 | 1500 | NIL |
| 27 | 1500 | 1500 | 1575 | 1500 | NIL |

VTPT AD 2.14 APPROACH AND RUNWAY LIGHTING

| RWY Designator | APCH LGT type LEN INTST | THR LGT colour WBAR | VASIS (MEHT) PAPI | TDZ, LGT LEN | RWY Centre Line LGT Length, spacing, colour, INTST | RWY edge LGT LEN, spacing, colour INTST | RWY End LGT colour WBAR | SWY LGT LEN (M) colour | Remarks |
|-------------------|-------------------------------|---------------------------|-------------------------|-----------------|---|--|----------------------------------|------------------------------|---------|
| 1 | 2 | 3 | 4 | 5 | 6 | 7 | 8 | 9 | 10 |
| 09 | NIL | NIL | NIL | NIL | NIL | 1 500 M NIL | NIL | NIL | NIL |
| 27 | NIL | NIL | PAPI BOTH 3° | NIL | NIL | 1 500 M NIL | NIL | NIL | NIL |

VTPT AD 2.15 OTHER LIGHTING, SECONDARY POWER SUPPLY

| | | |
|---|--|--|
| 1 | ABN/IBN location, characteristics and hours of operation | ABN: At Tower Building, FLG WG EV 7 SEC |
| 2 | LDI location and LGT Anemometer location and LGT | NIL |
| 3 | TWY edge and centre line lighting | NIL |
| 4 | Secondary power supply/switch-over time | Secondary power supply to all lighting at the airport, and ABN |
| 5 | Remarks | Flares 2 HR PN |

VTPT AD 2.16 HELICOPTER LANDING AREA

| | | |
|---|--|-----|
| 1 | Coordinates TLOF or THR of FATO Geoid undulation | NIL |
| 2 | TLOF and/or FATO elevation M/FT | NIL |
| 3 | TLOF and FATO area dimensions, surface, strength, marking | NIL |
| 4 | True and MAG BRG of FATO | NIL |
| 5 | Declared distance available | NIL |
| 6 | APP and FATO lighting | NIL |
| 7 | Remarks | NIL |

VTPT AD 2.17 ATS AIRSPACE

| | | |
|---|-----------------------------------|---|
| 1 | Designation and lateral limits | A circle of 5NM radius centred on Tak NDB (165358.24N 0991507.91E) |
| 2 | Vertical limits | 2000 FT/AGL |
| 3 | Airspace classification | C |
| 4 | ATS unit call sign Language(s) | Tak Tower English, Thai |
| 5 | Transition altitude | 11000FT |
| 6 | Remarks | NIL |

VTPT AD 2.18 ATS COMMUNICATION FACILITIES

| Service designation | Call sign | Frequency | Hours of operation | Remarks |
|---------------------|--------------|---|--------------------|-----------------------------------|
| 1 | 2 | 3 | 4 | 5 |
| APP | Tak Approach | 126.0 MHZ 121.5 MHZ ¹⁾ | As AD OPR HR | ¹⁾ Emergency frequency |
| TWR | Tak Tower | 121.5 MHZ ¹⁾ 118.8 MHZ 236.6 MHZ | As AD OPR HR | |

VTPT AD 2.19 RADIO NAVIGATION AND LANDING AIDS

| Type of aid, MAG VAR CAT of ILS/MLS (For VOR/ILS/MLS, give declination) | ID | Frequency | Hours of operation | Position of transmitting antenna coordinates | Elevation of DME transmitting antenna | Remarks |
|---|----|-----------|-----------------------|---|--|---|
| 1 | 2 | 3 | 4 | 5 | 6 | 7 |
| NDB | TK | 332 KHZ | H24 | 165358.24N 0991507.91E | NIL | 1. Route coverage checked and result found satisfactory as follows: <ul style="list-style-type: none"> - Bearing 098° from TK to PSL altitude 7 000 FT flown to 60 NM - Bearing 254° from TK to MST altitude 7 000 FT flown to 43 NM 2. Coverage 15 NM clockwise orbit data refer from commissioning checked as follows: <ul style="list-style-type: none"> - Bearing 001°-360° at altitude 3 500 FT |

VTPT AD 2.20 LOCAL AERODROME REGULATIONS

NIL

VTPT AD 2.21 NOISE ABATEMENT PROCEDURES

NIL

VTPT AD 2.22 FLIGHT PROCEDURES

NIL

VTPT AD 2.23 ADDITIONAL INFORMATION

NIL

VTPT AD 2.24 CHARTS RELATED TO AN AERODROME

Chart name

Page

Aerodrome Chart - ICAO

AD 2-VTPT-2-1

AERODROME CHART-ICAO

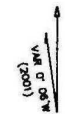
16° 53' 46" N
99° 15' 13" E

ELEV 478 ft
146 m

TWR 118.8
236.6

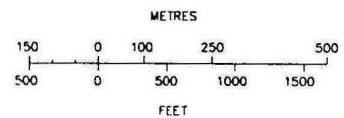
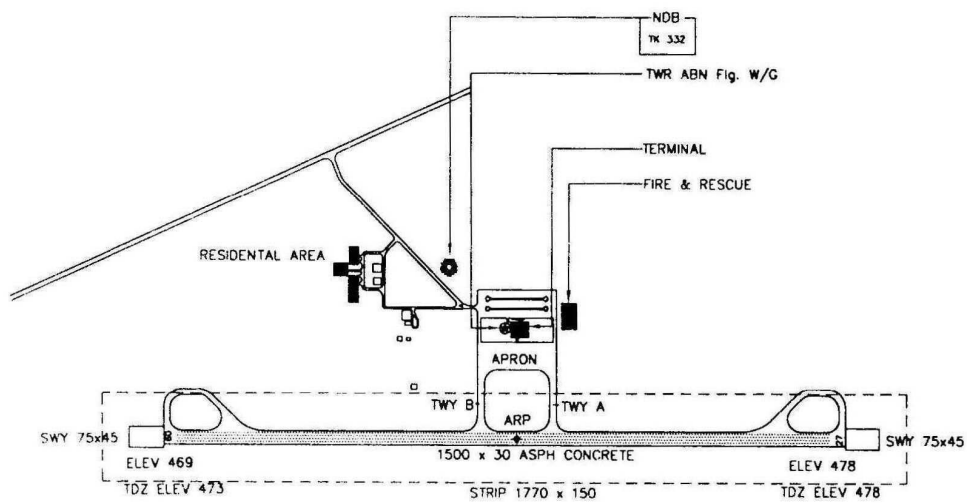
TAK / Tak

| RWY | DIRECTION | THR | BEARING STRENGTH |
|-------|-----------|---------------|------------------|
| 09 | 91° | 16° 53' 46" N | PCN 16/F/C/X/T |
| | | 99° 14' 47" E | |
| 27 | 271° | 16° 53' 45" N | |
| | | 99° 15' 37" E | |
| APRON | | | PCN 16/F/C/X/T |



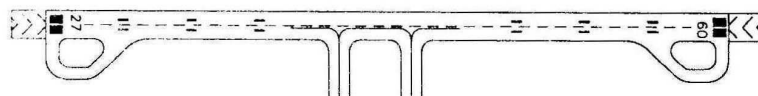
ANNUAL RATE OF CHANGE 3'E

ELEVATIONS IN FEET AND DIMENSIONS IN METRES
BEARINGS ARE MAGNETIC

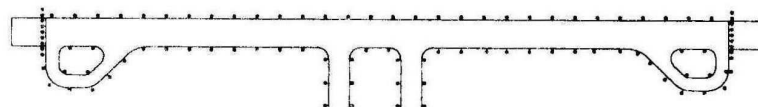


Remark : COORDINATE ARE WGS-84

MARKING AIDS RWY 09/27 AND EXIT TWY



LIGHTING AIDS RWY 09/27 AND EXIT TWY



INTENTIONALLY BLANK