

VTPP AD 2.1 AERODROME LOCATION INDICATOR AND NAME

VTPP - PHITSANULOK / PHITSANULOK AIRPORT

VTPP AD 2.2 AERODROME GEOGRAPHICAL AND ADMINISTRATIVE DATA

1	ARP coordinates and site at AD	164658.59N 1001644.88E
2	Direction and distance from (city)	8 KM SE, from city
3	Elevation/Reference temperature	148 FT/40°C
4	Geoid Undulation at AD ELEV PSN	-116 FT
5	MAG VAR/Annual change	1.00°W (2022)/ 0.04°W
6	AD Administration, address, telephone, telefax, telex, AFS	Director of Phitsanulok Airport Phitsanulok Airport Phitsanulok Province Thailand Tel: +665 530 1010 Fax: +665 530 1009 AFS: VTPPYDYX
7	Types of traffic permitted (IFR/VFR)	IFR/VFR
8	Remarks	Operator: Department of Airports

VTPP AD 2.3 OPERATIONAL HOURS

1	Aerodrome Operator	0000-1200
2	Customs and immigration	On request
3	Health and sanitation	On request
4	AIS Briefing Office	NIL
5	ATS Reporting Office (ARO)	0000-1200
6	MET Briefing Office	NIL
7	ATS	0000-1200
8	Fuelling	0000-1200
9	Handling	NIL
10	Security	NIL
11	De-icing	NIL
12	Remarks	ATS Reporting Office (ARO): Located at Phitsanulok Airport (1st floor of airport building) Tel: +665 530 1078 +669 2262 3140 Fax: +665 530 1077

VTPP AD 2.4 HANDLING SERVICES AND FACILITIES

1	Cargo-handling facilities	NIL
2	Fuel/oil types	JET A-1, AVGAS
3	Fuelling facilities/capacity	2 JET A-1 Refueller @ 12,000 L 1 AVGAS Refueller @ 3,000 L
4	De-icing facilities	NIL
5	Hangar space for visiting aircraft	NIL
6	Repair facilities for visiting aircraft	NIL
7	Remarks	NIL

VTPP AD 2.5 PASSENGER FACILITIES

1	Hotels	In the city
2	Restaurants	In the city
3	Transportation	Limousine and car hire from the airport
4	Medical facilities	NIL
5	Bank and Post Office	Bank: NIL Post Office: In the city
6	Tourist Office	NIL
7	Remarks	NIL

VTPP AD 2.6 RESCUE AND FIRE FIGHTING SERVICES

1	AD category for fire fighting	Category 6
2	Rescue equipment	Yes
3	Capability for removal of disabled aircraft	NIL
4	Remarks	NIL

VTPP AD 2.7 SEASONAL AVAILABILITY - CLEARING

1	Types of clearing equipment	NIL
2	Clearance priorities	NIL
3	Remarks	The aerodrome is available all seasons.

VTPP AD 2.8 APRONS, TAXIWAYS AND CHECK LOCATIONS/POSITIONS DATA

1	Apron surface and strength	Surface: Concrete Strength: PCN 57/R/C/X/T
2	Taxiway width, surface and strength	TWY A, B, C, D and E Width: 19 M Surface: Asphaltic concrete Strength: PCN 45/F/C/X/T TWY F and I Width: 23 M Surface: Asphaltic concrete Strength: PCN 61/F/C/X/T
3	Altimeter checkpoint location and elevation	NIL
4	VOR checkpoints	NIL
5	INS checkpoints	NIL
6	Remarks	NIL

VTPP AD 2.9 SURFACE MOVEMENT GUIDANCE AND CONTROL SYSTEM AND MARKINGS

1	Use of aircraft stand ID signs, TWY guide lines and visual docking/parking guidance system of aircraft stands	Aircraft stand ID signs: Marked TWY guide lines: Yes
2	RWY and TWY markings and LGT	RWY marking: RWY Designation, THR, TDZ, RCL, Aiming Point and Side Stripe RWY LGT: THR, RWY Edge and RWY End TWY marking: CL, Edge, Intermediate Holding Position and RWY Holding Position TWY LGT: TWY Edge
3	Stop bars	NIL
4	Remarks	NIL

VTPP AD 2.10 AERODROME OBSTACLES

In approach/TKOF areas			In circling areas and at AD		Remarks
1			2		
RWY/Area affected	Obstacle type Elevation Markings/LGT	Coordinates	Obstacle type Elevation Markings/LGT	Coordinates	3
a	b	c	a	b	
	Radio mast HGT 66 M painted red/white LGTD on top	164731N 1001658E	NIL	NIL	Microwave mast distance 1200 M from ARP, R-235 from PSL DVOR,
	Microwave mast HGT 45 M painted red/white LGTD on top	164650N 1001615E	NIL	NIL	
	TACAN HGT 15 M painted red/white LGTD on top	164630.63N 1001712.46E	NIL	NIL	

VTPP AD 2.11 METEOROLOGICAL INFORMATION PROVIDED

1	Associated MET Office	Aeronautical Meteorological Station-Phitsanulok, Northern Meteorological Center, Thai Meteorological Department (TMD)
2	Hours of service MET Office outside hours	2300-1200 NIL
3	Office responsible for TAF preparation Periods of validity	Supply TAF from Northern Meteorological Center 24 HR
4	Type of landing forecast Interval of issuance	TREND 1 HR
5	Briefing/consultation provided	Personal Consultation Tel: +665 530 1422 ext. 7078
6	Flight documentation Language(s) used	NIL
7	Charts and other information available for briefing or consultation	S, U85, Daily Weather Forecast, satellite and radar images
8	Supplementary equipment available for providing information	Automated Weather Observation System (AWOS), Weather Radar
9	ATS units provided with information	Phitsanulok TWR
10	Additional information (limitation of service, etc.)	NIL

VTPP AD 2.12 RUNWAY PHYSICAL CHARACTERISTICS

Designations RWY NR	TRUE BRG	Dimensions of RWY(M)	Strength (PCN) and surface of RWY and SWY	THR coordinates RWY end coordinates THR geoid undulation	THR elevation and highest elevation of TDZ of precision APP RWY
1	2	3	4	5	6
14	143.89°	3000x45	PCN 61/F/C/X/T Asphaltic concrete	164738.03N 1001615.01E -116 FT	THR 148 FT
32	323.89°	3000x45	PCN 61/F/C/X/T Asphaltic concrete	164619.13N 1001714.75E -116 FT	THR 148 FT

Slope of RWY-SWY	SWY dimensions (M)	CWY dimensions (M)	Strip dimensions (M)	RESA dimensions (M)	Location & description of arresting system	OFZ	Remarks
7	8	9	10	11	12	13	14
0%	NIL	NIL	3180x300	240x90	NIL	NIL	NIL
0%	60x60	NIL	3180x300	NIL	NIL	NIL	NIL

VTPP AD 2.13 DECLARED DISTANCES

RWY Designator	TORA (M)	TODA (M)	ASDA (M)	LDA (M)	Remarks
1	2	3	4	5	6
14	3000	3000	3000	3000	NIL
32	3000	3000	3060	3000	NIL

VTPP AD 2.14 APPROACH AND RUNWAY LIGHTING

RWY Designator	APCH LGT type LEN INTST	THR LGT colour WBAR	VASIS (MEHT) PAPI	TDZ, LGT LEN	RWY Centre Line LGT Length, spacing, colour, INTST	RWY edge LGT LEN, spacing, colour INTST	RWY End LGT colour WBAR	SWY LGT LEN (M) colour	Remarks
1	2	3	4	5	6	7	8	9	10
14	NIL	Green	PAPI Left 3°	NIL	NIL	3000 M 60 M White, LIM	Red	NIL	NIL
32	CAT1 900 M	Green	PAPI Left 3° (15.72 M)	NIL	NIL	3000 M 60 M White, LIM	Red	60 M Red	NIL

VTPP AD 2.15 OTHER LIGHTING, SECONDARY POWER SUPPLY

1	ABN/IBN location, characteristics and hours of operation	ABN: At Tower Building, FLG W G EV 6 SEC.. IBN: NIL
2	LDI location and LGT Anemometer location and LGT	LDI: NIL Anemometer: NIL
3	TWY edge and centre line lighting	TWY edge: All TWY TWY centre line: NIL
4	Secondary power supply/switch-over time	Secondary power supply to all lighting at the Air Field Lighting (AFL) building. Switch-over time: 15 SEC
5	Remarks	Flares 2 HR PN

VTPP AD 2.16 HELICOPTER LANDING AREA

1	Coordinates TLOF or THR of FATO Geoid undulation	NIL
2	TLOF and/or FATO elevation M/FT	NIL
3	TLOF and FATO area dimensions, surface, strength, marking	NIL
4	True and MAG BRG of FATO	NIL
5	Declared distance available	NIL
6	APP and FATO lighting	NIL
7	Remarks	NIL

VTPP AD 2.17 ATS AIRSPACE

1	Designation and lateral limits	A circle of 5 NM radius centred on PSL DVOR/DME (164613.34N 1001728.70E)
2	Vertical limits	2000 FT/AGL
3	Airspace classification	C
4	ATS unit call sign Language(s)	Phitsanulok Tower English, Thai
5	Transition altitude	11000 FT
6	Remarks	NIL

VTPP AD 2.18 ATS COMMUNICATION FACILITIES

Service designation	Call sign	Frequency	Hours of operation	Remarks
1	2	3	4	5
APP	Phitsanulok Approach	120.7 MHZ 284.0 MHZ 121.5 MHZ ¹⁾ 243.0 MHZ ¹⁾	As AD OPR HR	¹⁾ Emergency frequency
TWR	Phitsanulok Tower	118.9 MHZ 236.6 MHZ 121.5 MHZ ¹⁾ 243.0 MHZ ¹⁾	As AD OPR HR	
GND	Phitsanulok Ground	121.9 MHZ	As AD OPR HR	
ATIS	Phitsanulok Airport	127.4 MHZ	As AD OPR HR	

VTPP AD 2.19 RADIO NAVIGATION AND LANDING AIDS

Type of aid, MAG VAR CAT of ILS/MLS (For VOR/ILS/MLS, give declination)	ID	Frequency	Hours of operation	Position of transmitting antenna coordinates	Elevation of DME transmitting antenna	Remarks
1	2	3	4	5	6	7
NDB	PL	263 KHZ	H24	164745.44N 1001632.62E		Data refer from commissioning as follows: 40 NM clockwise orbit and result found satisfactory. <ul style="list-style-type: none"> - Bearing 011°-180° at altitude 6 000 FT - Bearing 181°-260° at altitude 1 500 FT - Bearing 261°-330° at altitude 5 000 FT - Bearing 331°-010° at altitude 1 500 FT
DVOR/DME	PSL	114.1 MHZ CH88X	H24	164613.34N 1001728.70E		DVOR/DME restriction due to mountainous terrain surround DVOR/DME station, coverage does not provide adequate signal to 40 NM at the required altitude in various areas as follows: <ul style="list-style-type: none"> - Radial 351°-120° altitude should not below 5 500 FT - Radial 121°-270° altitude should not below 3 000 FT - Radial 271°-300° altitude should not below 5 000 FT - Radial 301°-350° altitude should not below 3 500 FT
ILS CAT I LOC RWY32	IPSL	110.1 MHZ	H24	164746.19N 1001608.82E		Designated operational coverage 18 NM ±10° and 10 NM ±35° of localizer course, no back course and voice feature, the antenna array is located on extended runway centre line at distance 310 M. from THR of runway 14.
GP/DME		334.4 MHZ CH38X	H24	164629.87N 1001711.63E		Glide Path 3° DME co-located with Glide Slope power output 100 watts Uni-directional
TACAN		CH99		1647.6N 10016.7E		Military Facility, operation on request 30 MIN PN to ATC.

VTPP AD 2.20 LOCAL AERODROME REGULATIONS

1. 180 DEGREE TURN ON THE RUNWAY

To prevent runway pavement damage, all aircraft Maximum Takeoff Weight (MTOW) more than 5700 KG are not allowed to make 180 degree turn on the runway. The turn shall be made on the runway turn pad at the end of runway 14 and 32 only. Any breach done by the aircraft operator shall be recorded and reported to The Civil Aviation Authority of Thailand / The Headquarter of that operator shall be liable for the compensation caused by such violation.

VTPP AD 2.21 NOISE ABATEMENT PROCEDURES

NIL

VTPP AD 2.22 FLIGHT PROCEDURES

1. VFR PROCEDURES AND LOCAL PROCEDURES

1.1 Details of VFR entry and exit procedures, see charts.

1.2 Aerodrome traffic circuit

Using both sides of traffic circuit.

1.3 Overhead approach pattern.

- a) Using runway 14 by right turn pattern.
- b) Using runway 32 by left turn pattern.

2. SPEED CONTROL PROCEDURE IN PHITSANULOK TMA

- a) All arriving turbo-propeller and turbo-jet aircraft when flying below 10000 FT AMSL are subject to fly not faster than indicated air speed 250 knots unless authorized by ATC.
- b) Speed will be reduced to 220 knots during 20-25 track miles from touchdown.
- c) 180 knots at Intermediate fix (Including aircraft from RNAV STAR), or shortly before closing heading to intercept or to establish the final course,
- d) 150 to 160 knots at FAP or FAF; all speed to be flown as accurately as possible. At the other times, speed control may be applied on a tactical basis to extent determined by ATC.
- e) Pilots who unable to comply with the speed limits specifics above for reasons of flight safety and/or weather conditions should inform ATC and state the speed acceptable.
- f) ATC will notify that the aircraft may keep its preferred speed without restriction and will use the phrase "NO SPEED RESTRICTIONS". An instruction to notify that the aircraft need no longer comply with the previous issued speed restriction, the phrase "RESUME NORMAL SPEED" will be used.
- g) All aircraft navigating under conditions of RNAV STARs shall conform to speed limitation as published then at IF pilot shall comply with speed control procedures unless otherwise instructed by ATC.
- h) If the pilots do not comply, the flight shall follow ATC instruction for re-sequencing.

NOTE - an instruction to "RESUME NORMAL SPEED" does not cancel speed restrictions that applicable to published procedure of upcoming segments of flight, aircraft shall comply speed restrictions specified in a) b) c) and d)

VTPP AD 2.23 ADDITIONAL INFORMATION

1. BIRD CONCENTRATIONS

- Bird concentrations in the vicinity of an aerodrome.

VTPP AD 2.24 CHARTS RELATED TO AN AERODROME

Chart name	Page
Aerodrome Chart - ICAO	AD 2-VTPP-2-1
Aerodrome Ground Movement chart - ICAO	AD 2-VTPP-2-3
Standard Departure Chart - Instrument (SID) - ICAO - RNAV RWY 14 - PEBL1A PIBIK1A	AD 2-VTPP-6-1
Standard Departure Chart - Instrument (SID) - ICAO - RNAV RWY 14 - PEBL1A PIBIK1A (Tabular description)	AD 2-VTPP-6-3
Standard Departure Chart - Instrument (SID) - ICAO - RNAV RWY 32 - GOKON1B GOSTA1B NIROP1B PEBL1B PIBIK1B POLOB1B REMER1B	AD 2-VTPP-6-5
Standard Departure Chart - Instrument (SID) - ICAO - RNAV RWY 32 - GOKON1B GOSTA1B NIROP1B PEBL1B PIBIK1B POLOB1B REMER1B (Tabular description)	AD 2-VTPP-6-6
Standard Departure Chart - Instrument (SID) - ICAO - RNAV RWY 32 - GOKON1B GOSTA1B NIROP1B PEBL1B PIBIK1B POLOB1B REMER1B (Waypoint list table)	AD 2-VTPP-6-7
Instrument Approach Chart - ICAO - NDB RWY 14	AD 2-VTPP-8-1
Instrument Approach Chart - ICAO - NDB RWY 32	AD 2-VTPP-8-3
Instrument Approach Chart - ICAO - VOR RWY 14	AD 2-VTPP-8-5
Instrument Approach Chart - ICAO - VOR RWY 14 (Fix and point list table)	AD 2-VTPP-8-6
Instrument Approach Chart - ICAO - VOR RWY 32	AD 2-VTPP-8-7
Instrument Approach Chart - ICAO - VOR RWY 32 (Fix and point list table)	AD 2-VTPP-8-8
Instrument Approach Chart - ICAO - ILS or LOC RWY 32	AD 2-VTPP-8-9
Instrument Approach Chart - ICAO - ILS or LOC RWY 32 (Fix and point list table)	AD 2-VTPP-8-10
Instrument Approach Chart - ICAO - RNP RWY 14	AD 2-VTPP-8-11
Instrument Approach Chart - ICAO - RNP RWY 14 (Tabular description)	AD 2-VTPP-8-12
Instrument Approach Chart - ICAO - RNP RWY 32	AD 2-VTPP-8-13
Instrument Approach Chart - ICAO - RNP RWY 32 (Tabular description)	AD 2-VTPP-8-14
VFR ENTRY PROCEDURE CHART - RWY 14/32	AD 2-VTPP-9-1
VFR ENTRY PROCEDURE CHART - RWY 14/32 (Tabular description)	AD 2-VTPP-9-2
VFR EXIT PROCEDURE CHART - RWY 14	AD 2-VTPP-9-3
VFR EXIT PROCEDURE CHART - RWY 14 (Tabular description)	AD 2-VTPP-9-4
VFR EXIT PROCEDURE CHART - RWY 32	AD 2-VTPP-9-5
VFR EXIT PROCEDURE CHART - RWY 32 (Tabular description)	AD 2-VTPP-9-6

INTENTIONALLY BLANK

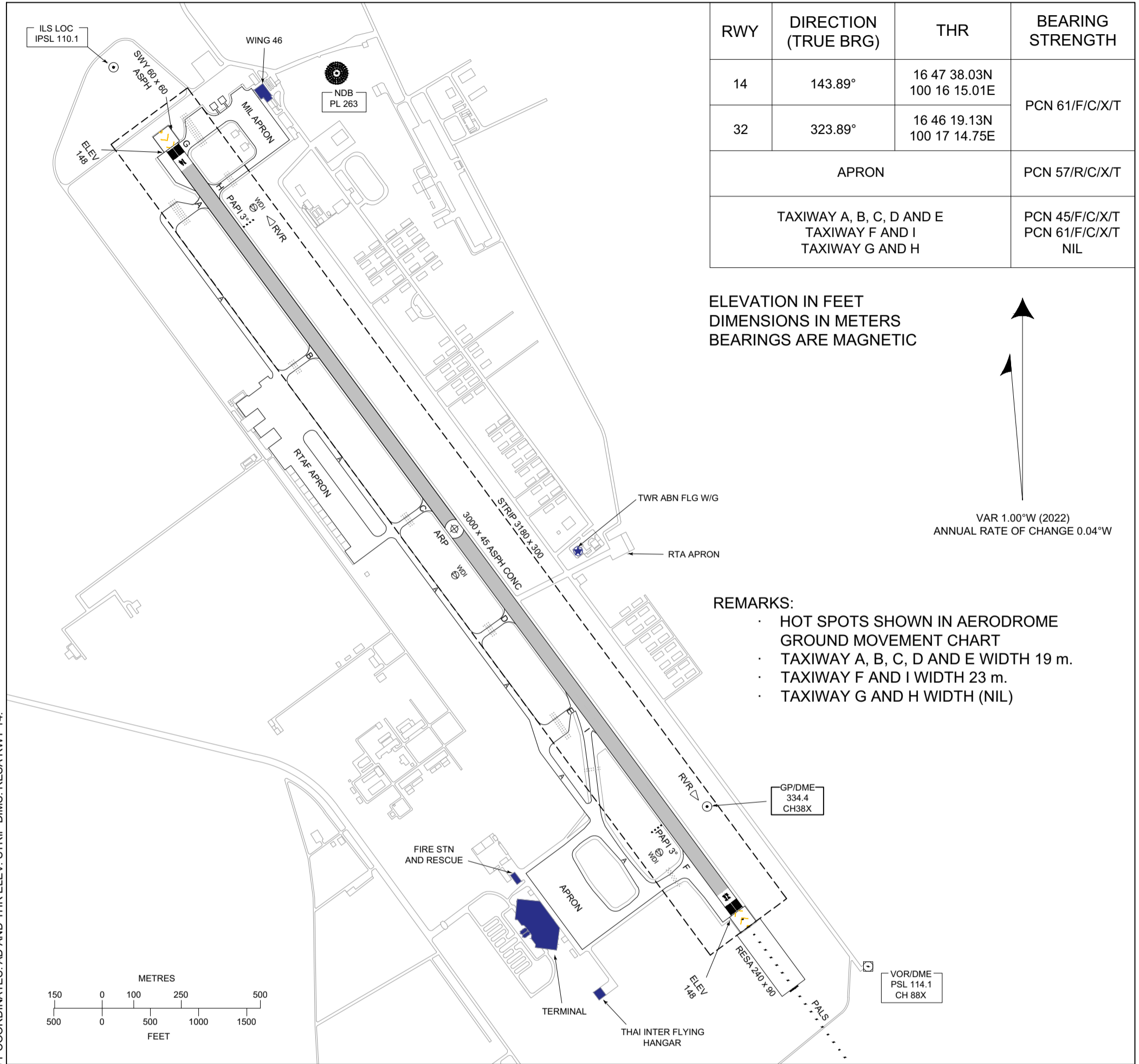
AERODROME CHART - ICAO

**16 46 58.59N
100 16 44.88E**

ELEV 148 FT

**TWR 118.9, 236.6
GND 121.9**

**PHITSANULOK /
Phitsanulok**

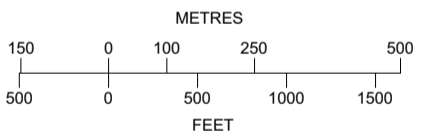


RWY	DIRECTION (TRUE BRG)	THR	BEARING STRENGTH
14	143.89°	16 47 38.03N 100 16 15.01E	PCN 61/F/C/X/T
32	323.89°	16 46 19.13N 100 17 14.75E	
APRON			PCN 57/R/C/X/T
TAXIWAY A, B, C, D AND E TAXIWAY F AND I TAXIWAY G AND H			PCN 45/F/C/X/T PCN 61/F/C/X/T NIL

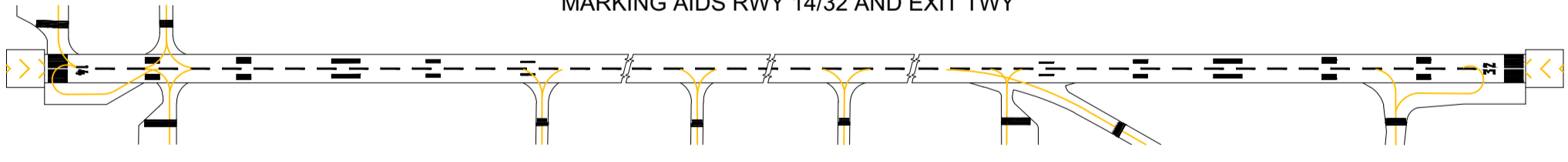
ELEVATION IN FEET
DIMENSIONS IN METERS
BEARINGS ARE MAGNETIC

VAR 1.00°W (2022)
ANNUAL RATE OF CHANGE 0.04°W

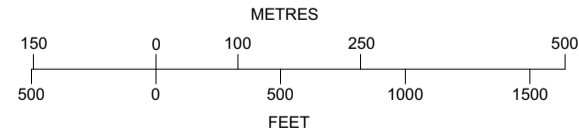
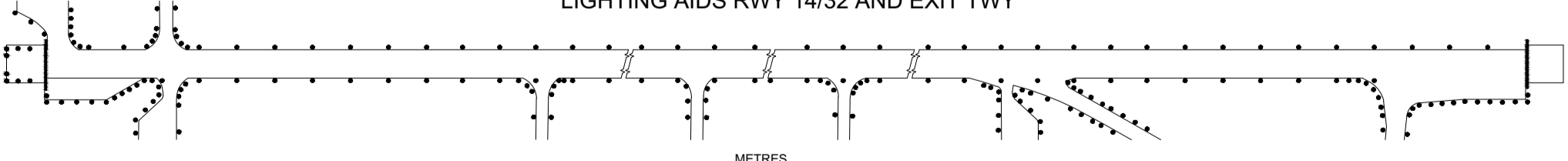
- REMARKS:
- HOT SPOTS SHOWN IN AERODROME GROUND MOVEMENT CHART
 - TAXIWAY A, B, C, D AND E WIDTH 19 m.
 - TAXIWAY F AND I WIDTH 23 m.
 - TAXIWAY G AND H WIDTH (NIL)



MARKING AIDS RWY 14/32 AND EXIT TWY



LIGHTING AIDS RWY 14/32 AND EXIT TWY



CHANGE: REVISED CHART. MAG VAR. ANNUAL RATE OF CHANGE. RWY COORDINATES. AD AND THR ELEV. STRIP DIMS. RESA RWY 14.

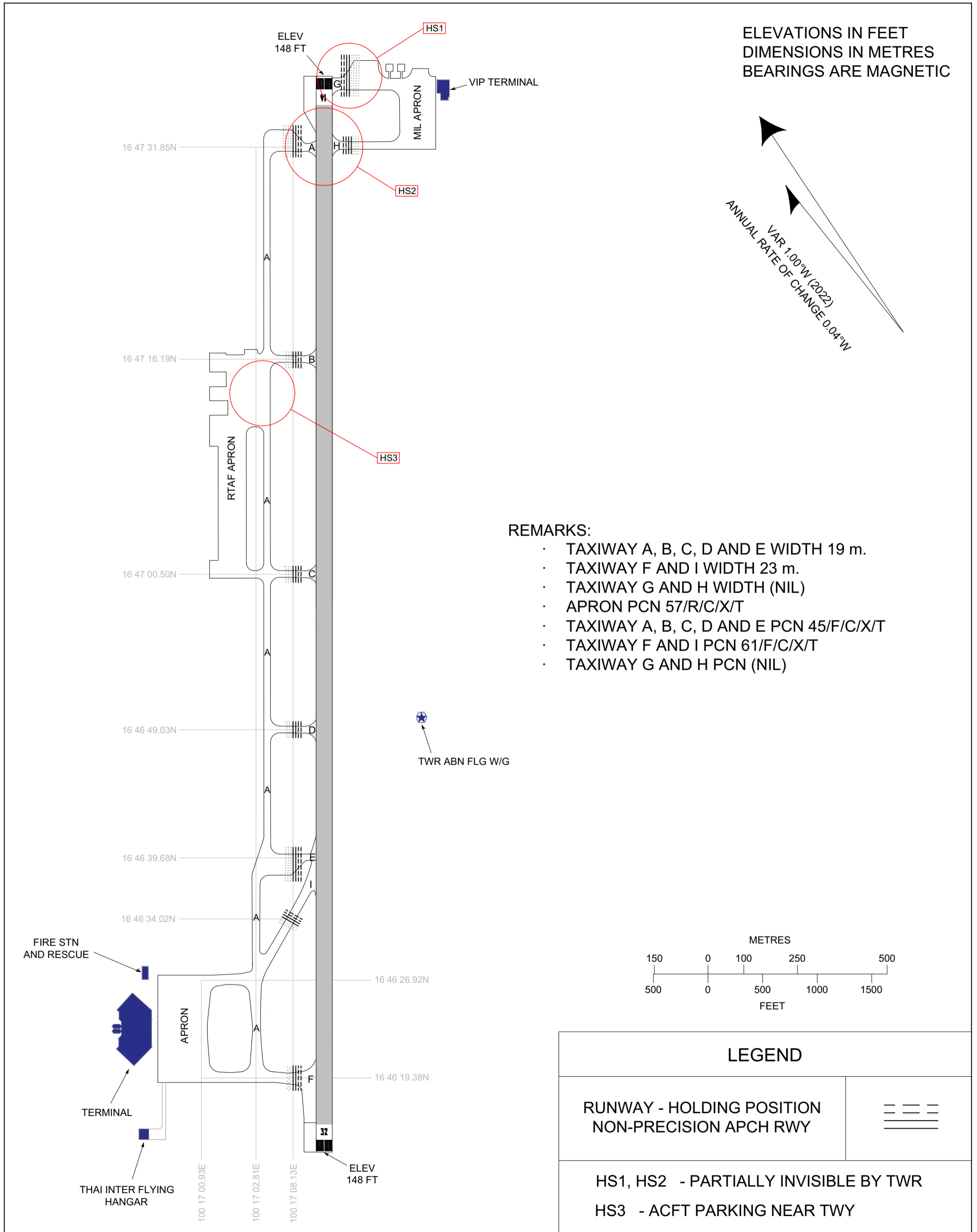
INTENTIONALLY BLANK

**AERODROME GROUND
MOVEMENT CHART - ICAO**

**APRON ELEV
150 FT**

TWR 118.9, 236.6
GND 121.9

PHITSANULOK / Phitsanulok



INTENTIONALLY BLANK

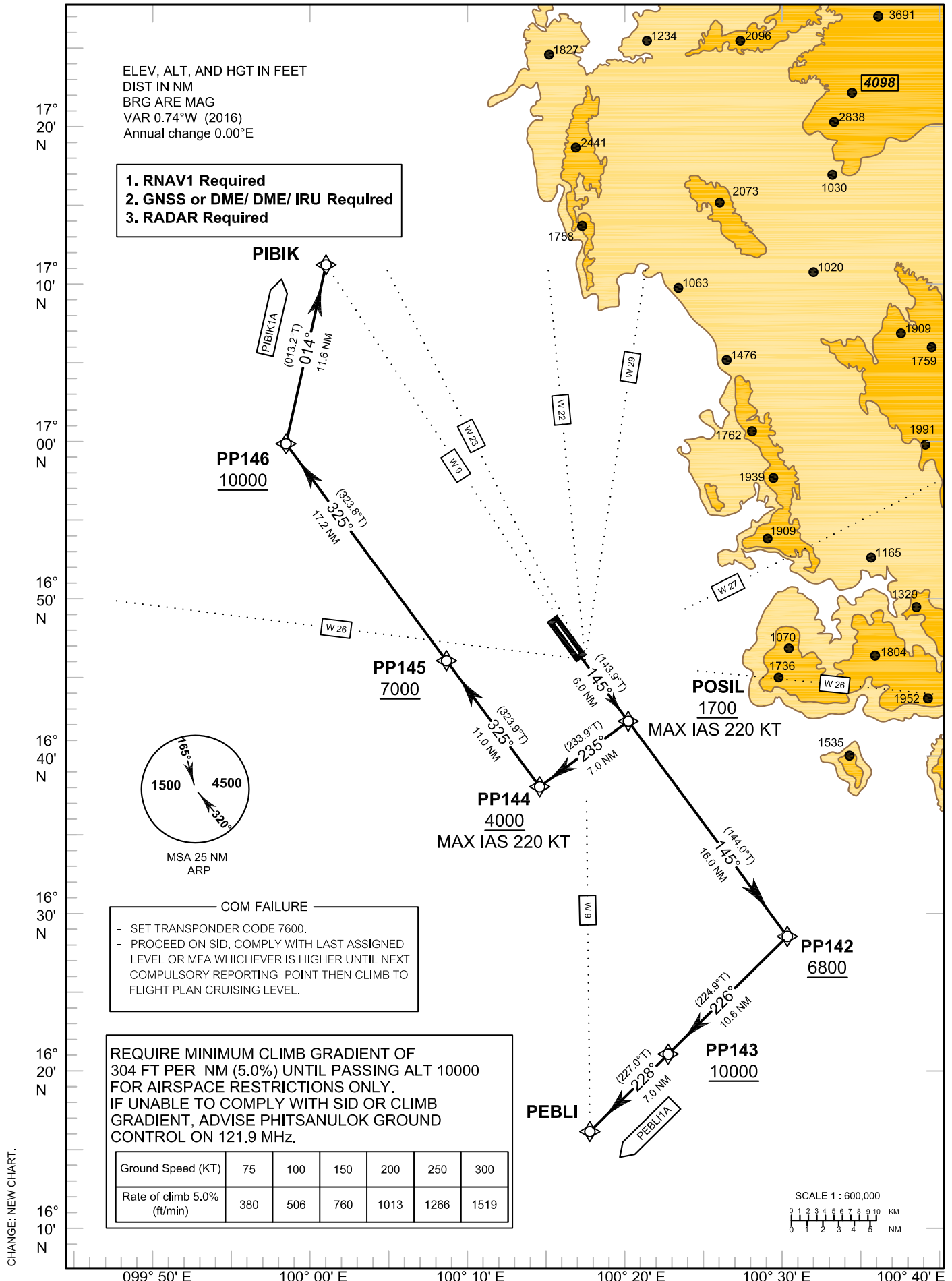
**STANDARD DEPARTURE CHART -
INSTRUMENT (SID) - ICAO**

TRANSITION ALTITUDE
11000

APP : 120.7, 284.0
TWR : 118.9, 236.6
GND : 121.9

**PHITSANULOK/Phitsanulok (VTPP)
RNAV RWY14**

PEBL1A PIBIK1A



INTENTIONALLY BLANK

STANDARD DEPARTURE CHART -
INSTRUMENT (SID) - ICAO

PHITSANULOK/Phitsanulok (VTPP)
RNAV RWY14

PEBLI1A PIBIK1A

TABULAR DESCRIPTION

RNAV RWY14											
Serial Number	Path Descriptor	Waypoint Identifier	Flyover	Course ° M (° T)	Magnetic Variation	Distance (NM)	Turn Direction	Altitude (FT)	Speed (KT)	VPA/ TCH	Navigation Specification
010	-	DER RWY 14	-	-	+0.74	-	-	-	-	-	RNAV 1
020	CF	POSIL	-	145°(143.9°)	+0.74	6.0	-	+1700	-220	-	RNAV 1
030	TF	PP142	-	145°(144.0°)	+0.74	16.0	R	+6800	-	-	RNAV 1
040	TF	PP143	-	226°(224.9°)	+0.74	10.6	R	+10000	-	-	RNAV 1
050	TF	PEBLI	-	228°(227.0°)	+0.74	7.0	-	-	-	-	RNAV 1
010	-	DER RWY 14	-	-	+0.74	-	-	-	-	-	RNAV 1
020	CF	POSIL	-	145°(143.9°)	+0.74	6.0	R	+1700	-220	-	RNAV 1
030	TF	PP144	-	235°(233.9°)	+0.74	7.0	R	+4000	-220	-	RNAV 1
040	TF	PP145	-	325°(323.9°)	+0.74	11.0	-	+7000	-	-	RNAV 1
050	TF	PP146	-	325°(323.8°)	+0.74	17.2	R	+10000	-	-	RNAV 1
060	TF	PIBK	-	014°(013.2°)	+0.74	11.6	-	-	-	-	RNAV 1

WAYPOINT LIST

RNAV RWY14		
Waypoint Identifier	Coordinates	
DER RWY 14	16° 46' 19.16" N	100° 17' 14.69" E
POSIL	16° 41' 27.08" N	100° 20' 55.71" E
PP144	16° 37' 18.47" N	100° 15' 02.36" E
PP145	16° 46' 13.74" N	100° 08' 16.95" E
PP146	17° 00' 10.25" N	099° 57' 41.76" E
PIBK	17° 11' 30.33" N	100° 00' 27.77" E
PP142	16° 28' 27.95" N	100° 30' 44.27" E
PP143	16° 20' 55.49" N	100° 22' 57.33" E
PEBLI	16° 16' 05.94" N	100° 17' 36.21" E

INTENTIONALLY BLANK

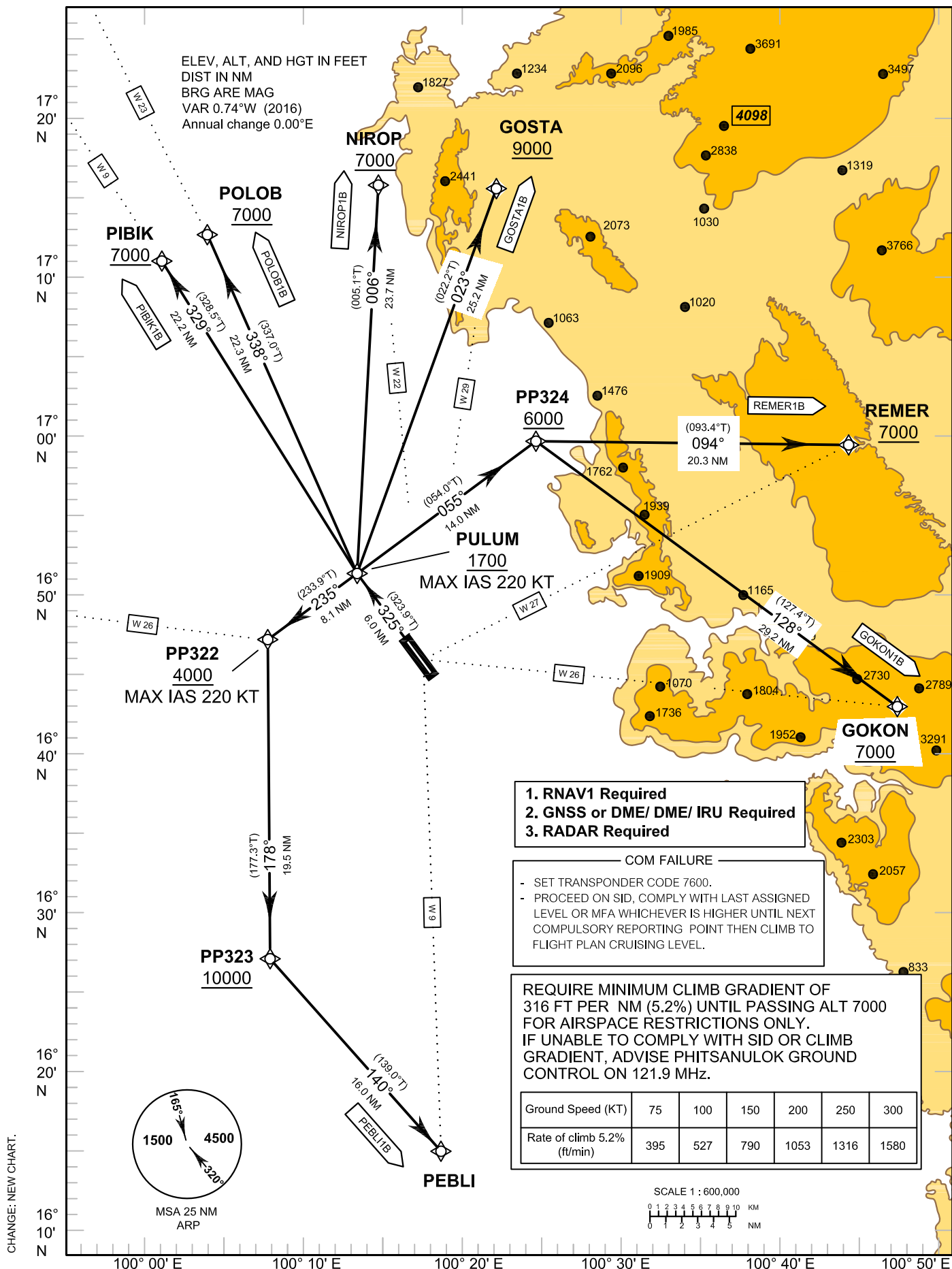
**STANDARD DEPARTURE CHART -
INSTRUMENT (SID) - ICAO**

TRANSITION ALTITUDE
11000

APP : 120.7, 284.0
TWR : 118.9, 236.6
GND : 121.9

**PHITSANULOK/Phitsanulok (VTPP)
RNAV RWY32**

GOKON1B GOSTA1B NIROP1B
PEBLI1B PIBIK1B POLOB1B REMER1B



STANDARD DEPARTURE CHART -
INSTRUMENT (SID) - ICAO

PHITSANULOK/Phitsanulok (VTPP)
RNAV RWY32

GOKON1B GOSTA1B NIROP1B
PEBLI1B PIBIK1B POLOB1B REMER1B

TABULAR DESCRIPTION

RNAV RWY32											
Serial Number	Path Descriptor	Waypoint Identifier	Flyover	Course ° M (° T)	Magnetic Variation	Distance (NM)	Turn Direction	Altitude (FT)	Speed (KT)	VPA/TCH	Navigation Specification
010	-	DER RWY 32	-	-	+0.74	-	-	-	-	-	RNAV 1
020	CF	PULUM	-	325°(323.9°)	+0.74	6.0	R	+1700	-220	-	RNAV 1
030	TF	PP324	-	055°(054.0°)	+0.74	14.0	R	+6000	-	-	RNAV 1
040	TF	GOKON	-	128°(127.4°)	+0.74	29.2	-	+7000	-	-	RNAV 1
010	-	DER RWY 32	-	-	+0.74	-	-	-	-	-	RNAV 1
020	CF	PULUM	-	325°(323.9°)	+0.74	6.0	R	+1700	-220	-	RNAV 1
030	TF	GOSTA	-	023°(022.2°)	+0.74	25.2	-	+9000	-	-	RNAV 1
010	-	DER RWY 32	-	-	+0.74	-	-	-	-	-	RNAV 1
020	CF	PULUM	-	325°(323.9°)	+0.74	6.0	R	+1700	-220	-	RNAV 1
030	TF	NIROP	-	006°(005.1°)	+0.74	23.7	-	+7000	-	-	RNAV 1
010	-	DER RWY 32	-	-	+0.74	-	-	-	-	-	RNAV 1
020	CF	PULUM	-	325°(323.9°)	+0.74	6.0	L	+1700	-220	-	RNAV 1
030	TF	PP322	-	235°(233.9°)	+0.74	8.1	L	+4000	-220	-	RNAV 1
040	TF	PP323	-	178°(177.3°)	+0.74	19.5	L	+10000	-	-	RNAV 1
050	TF	PEBLI	-	140°(139.0°)	+0.74	16.0	-	-	-	-	RNAV 1
010	-	DER RWY 32	-	-	+0.74	-	-	-	-	-	RNAV 1
020	CF	PULUM	-	325°(323.9°)	+0.74	6.0	R	+1700	-220	-	RNAV 1
030	TF	PIBIK	-	329°(328.5°)	+0.74	22.2	-	+7000	-	-	RNAV 1
010	-	DER RWY 32	-	-	+0.74	-	-	-	-	-	RNAV 1
020	CF	PULUM	-	325°(323.9°)	+0.74	6.0	R	+1700	-220	-	RNAV 1
030	TF	POLOB	-	338°(337.0°)	+0.74	22.3	-	+7000	-	-	RNAV 1
010	-	DER RWY 32	-	-	+0.74	-	-	-	-	-	RNAV 1
020	CF	PULUM	-	325°(323.9°)	+0.74	6.0	R	+1700	-220	-	RNAV 1
030	TF	PP324	-	055°(054.0°)	+0.74	14.0	R	+6000	-	-	RNAV 1
040	TF	REMER	-	094°(093.4°)	+0.74	20.3	-	+7000	-	-	RNAV 1

STANDARD DEPARTURE CHART -
INSTRUMENT (SID) - ICAO

PHITSANULOK/Phitsanulok (VTPP)
RNAV RWY32

GOKON1B GOSTA1B NIROP1B
PEBL1B PIBIK1B POLOB1B REMER1B

WAYPOINT LIST

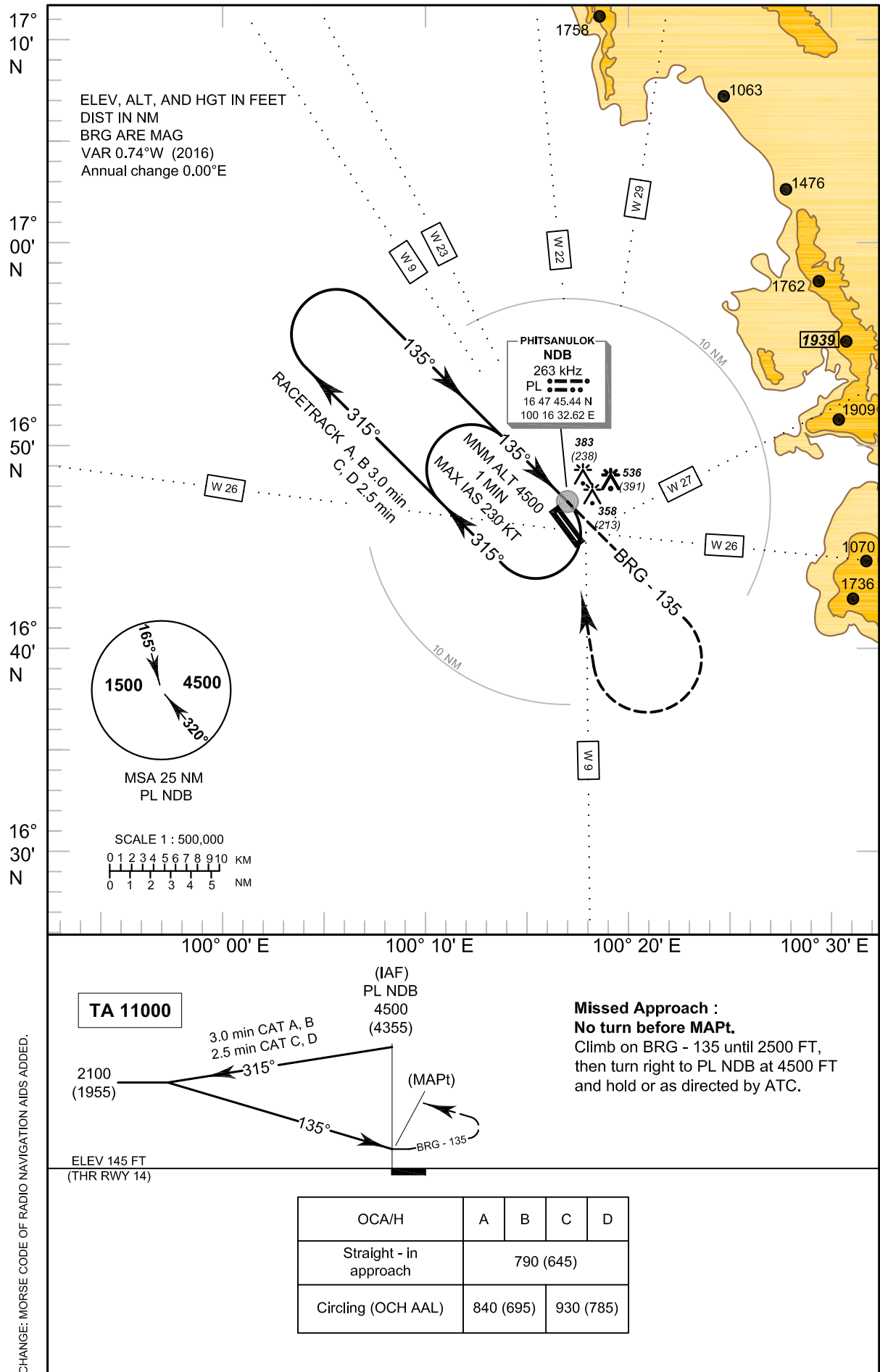
RNAV RWY32		
Waypoint Identifier		
Coordinates		
DER RWY 32	16° 47' 38.00" N	100° 16' 14.99" E
PULUM	16° 52' 29.99" N	100° 12' 33.73" E
PP322	16° 47' 42.31" N	100° 05' 44.78" E
PP323	16° 28' 10.46" N	100° 06' 42.36" E
PEBLI	16° 16' 05.94" N	100° 17' 36.21" E
PIBIK	17° 11' 30.33" N	100° 00' 27.77" E
POLOB	17° 13' 09.43" N	100° 03' 27.80" E
NIROP	17° 16' 13.74" N	100° 14' 44.33" E
GOSTA	17° 15' 57.30" N	100° 22' 29.83" E
PP324	17° 00' 46.69" N	100° 24' 22.00" E
REMER	16° 59' 34.56" N	100° 45' 31.34" E
GOKON	16° 43' 00.76" N	100° 48' 33.82" E

INTENTIONALLY BLANK

INSTRUMENT AERODROME ELEV 145 FT
APPROACH HEIGHTS RELATED TO
CHART - ICAO AERODROME ELEV

APP : 120.7, 284.0
 TWR : 118.9, 236.6
 GND : 121.9

PHITSANULOK/Phitsanulok (VTPP)
NDB RWY14

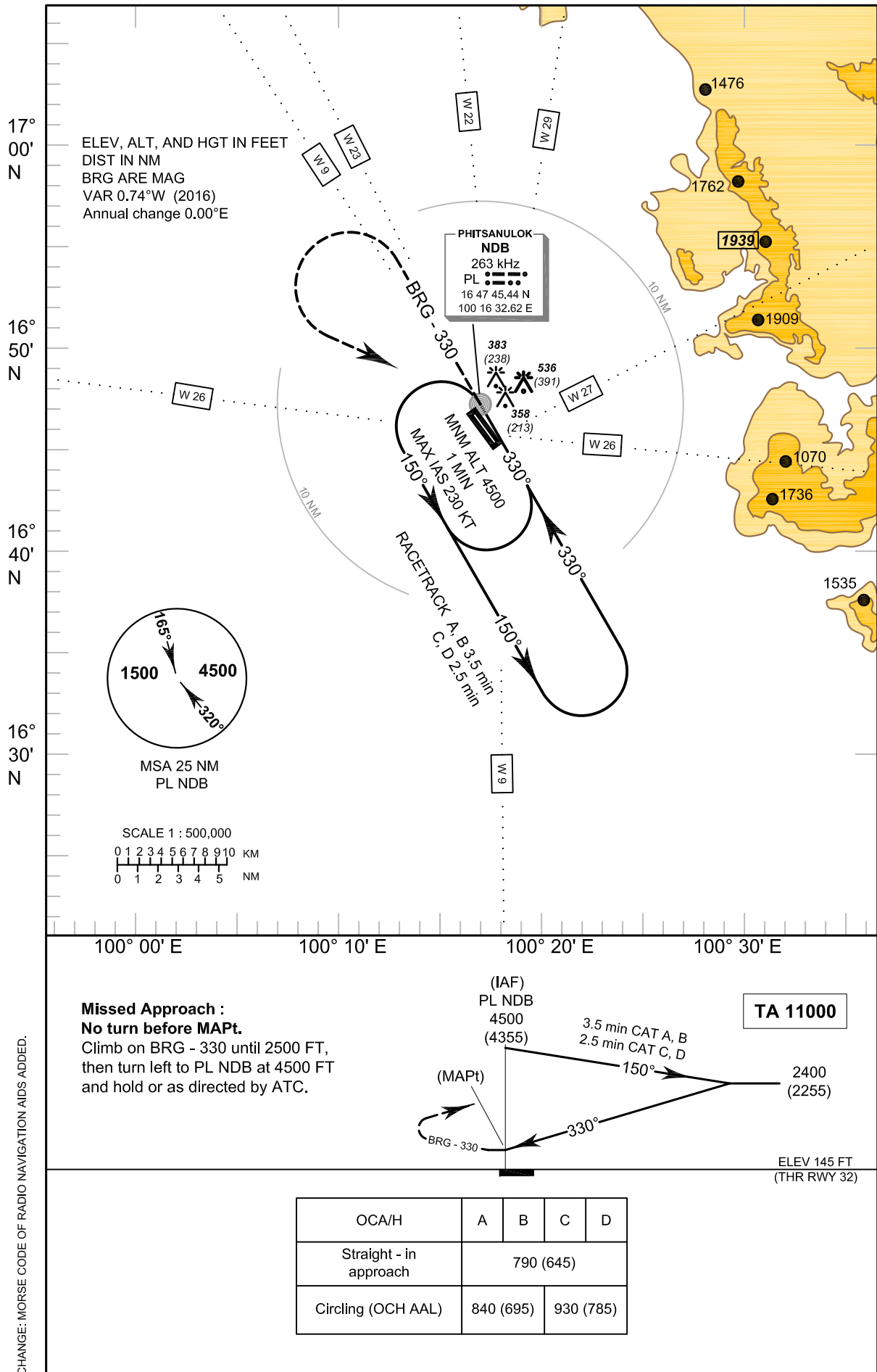


INTENTIONALLY BLANK

INSTRUMENT AERODROME ELEV 145 FT
APPROACH HEIGHTS RELATED TO
CHART - ICAO AERODROME ELEV

APP : 120.7, 284.0
TWR : 118.9, 236.6
GND : 121.9

PHITSANULOK/Phitsanulok (VTPP)
NDB RWY32



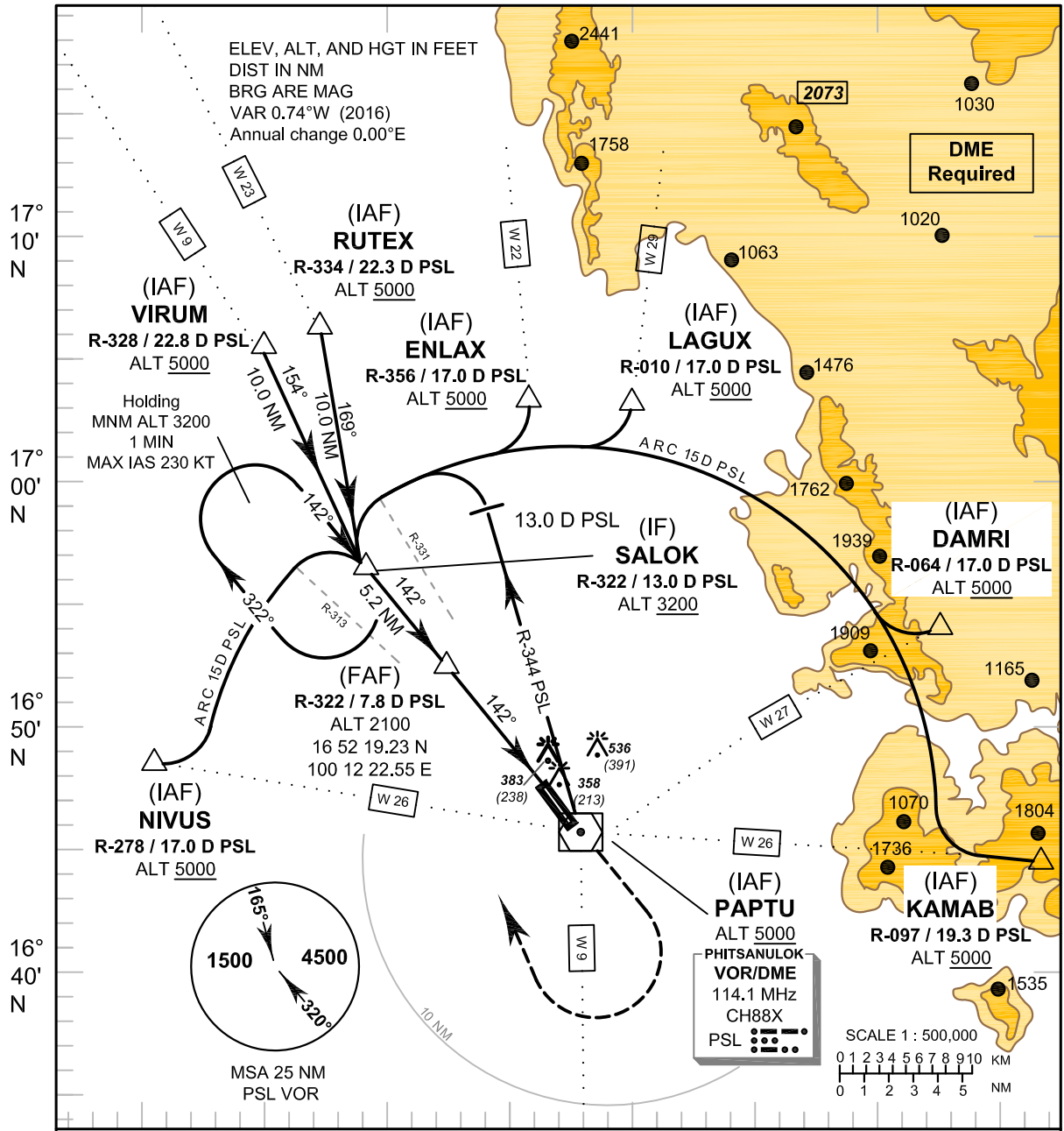
CHANGE: MORSE CODE OF RADIO NAVIGATION AIDS ADDED.

INTENTIONALLY BLANK

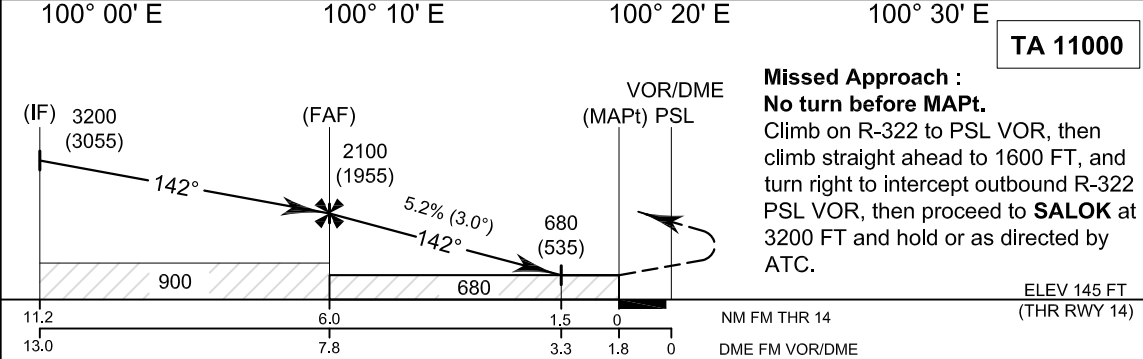
INSTRUMENT AERODROME ELEV 145 FT
APPROACH HEIGHTS RELATED TO
CHART - ICAO AERODROME ELEV

APP : 120.7, 284.0
TWR : 118.9, 236.6
GND : 121.9

PHITSANULOK/Phitsanulok (VTPP)
VOR RWY14



CHANGE: MORSE CODE OF RADIO NAVIGATION AIDS ADDED. WPT NAME.



OCA/H	A	B	C	D	Distance (PSL)	FAF	7 D	6 D	5 D	4 D	3,3 D	
Straight - in approach	680 (535)				Altitude (Height)	2100 (1955)	1835 (1690)	1520 (1375)	1205 (1060)	890 (745)	680 (535)	
					Ground Speed	knot	70	90	100	120	140	160
Circling (OCH AAL)	840 (695)		930 (785)		Rate of descent (5.2%)	ft/min	369	474	527	632	737	843

INSTRUMENT AERODROME ELEV 145 FT
APPROACH HEIGHTS RELATED TO
CHART-ICAO AERODROME ELEV

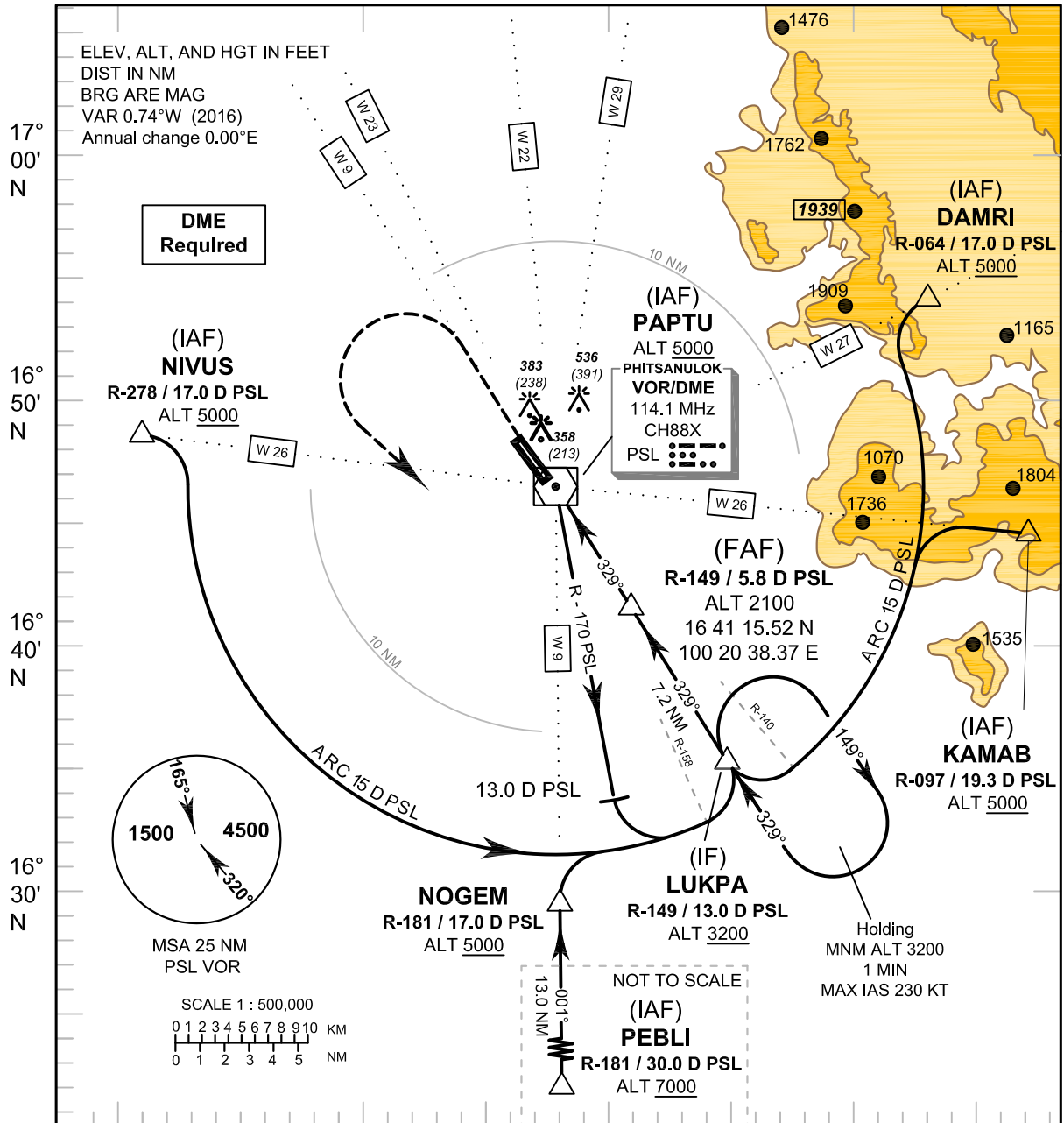
PHITSANULOK/Phitsanulok (VTPP)
VOR RWY14

Fix / Point		Coordinates	
PAPTU (IAF)	PSL	16° 46' 13.34" N	100° 17' 28.70" E
NIVUS (IAF)	R - 278 / 17.0 D PSL	16° 48' 26.33" N	099° 59' 54.50" E
RUTEX (IAF)	R - 334 / 22.3 D PSL	17° 06' 15.35" N	100° 07' 03.69" E
VIRUM (IAF)	R - 328 / 22.8 D PSL	17° 05' 28.31" N	100° 04' 31.92" E
ENLAX (IAF)	R - 356 / 17.0 D PSL	17° 03' 13.58" N	100° 15' 55.67" E
LAGUX (IAF)	R - 010 / 17.0 D PSL	17° 03' 04.27" N	100° 20' 19.14" E
DAMRI (IAF)	R - 064 / 17.0 D PSL	16° 53' 47.82" N	100° 33' 21.71" E
KAMAB (IAF)	R - 097 / 19.3 D PSL	16° 44' 09.72" N	100° 37' 31.28" E
SALOK (IF)	R - 322 / 13.0 D PSL	16° 56' 23.08" N	100° 08' 58.26" E
(FAF)	R - 322 / 7.8 D PSL	16° 52' 19.23" N	100° 12' 22.55" E
MAPt	R - 322 / 1.8 D PSL	16° 47' 39.33" N	100° 16' 16.79" E
VOR (IAF)	PSL	16° 46' 13.34" N	100° 17' 28.70" E

INSTRUMENT AERODROME ELEV 145 FT
APPROACH HEIGHTS RELATED TO
CHART - ICAO AERODROME ELEV

APP : 120.7, 284.0
TWR : 118.9, 236.6
GND : 121.9

PHITSANULOK/Phitsanulok (VTPP)
VOR RWY32



TA 11000

Missed Approach :
No turn before MAPt.
Climb straight ahead to 1600 FT, then turn left to intercept outbound R-149 PSL VOR, then proceed to **LUKPA** at 3200 FT and hold or as directed by ATC.

ELEV 145 FT
(THR RWY 32)

	NM	FM	THR	32	0	0.2	1.3	6.0	13.2
DME FM VOR/DME	0	1.1	5.8	13.0					

OCA/H	A	B	C	D	Distance (PSL)	1.1 D	2 D	3 D	4 D	5 D	FAF	
Straight - in approach	610 (465)				Altitude (Height)	610 (465)	890 (745)	1205 (1060)	1520 (1375)	1840 (1695)	2100 (1955)	
					Ground Speed	knot	70	90	100	120	140	160
Circling (OCH AAL)	840 (695)		930 (785)		Rate of descent (5.2%)	ft/min	369	474	527	632	737	843

CHANGE: MORSE CODE OF RADIO NAVIGATION AIDS ADDED. WPT NAME: PEBLI/ALT.

INSTRUMENT AERODROME ELEV 145 FT
APPROACH HEIGHTS RELATED TO
CHART-ICAO AERODROME ELEV

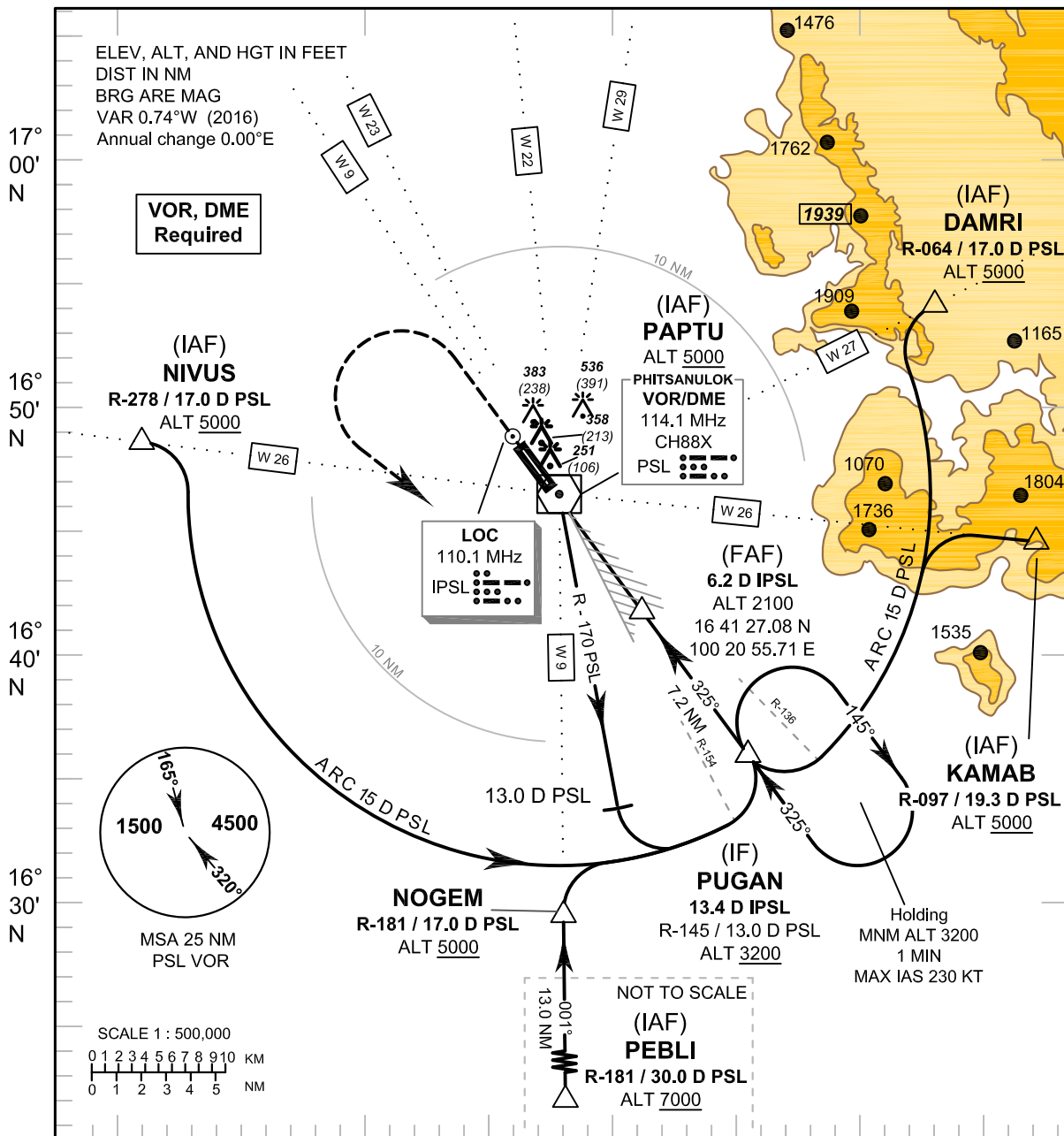
PHITSANULOK/Phitsanulok (VTPP)
VOR RWY32

Fix / Point		Coordinates	
PAPTU (IAF)	PSL	16° 46' 13.34" N	100° 17' 28.70" E
NIVUS (IAF)	R - 278 / 17.0 D PSL	16° 48' 26.33" N	099° 59' 54.50" E
PEBLI (IAF)	R - 181 / 30.0 D PSL	16° 16' 05.94" N	100° 17' 36.21" E
NOGEM	R - 181 / 17.0 D PSL	16° 29' 09.16" N	100° 17' 32.96" E
DAMRI (IAF)	R - 064 / 17.0 D PSL	16° 53' 47.82" N	100° 33' 21.71" E
KAMAB (IAF)	R - 097 / 19.3 D PSL	16° 44' 09.72" N	100° 37' 31.28" E
LUKPA (IF)	R - 149 / 13.0 D PSL	16° 35' 05.75" N	100° 24' 33.60" E
(FAF)	R - 149 / 5.8 D PSL	16° 41' 15.52" N	100° 20' 38.37" E
VOR (MAPt)	PSL	16° 46' 13.34" N	100° 17' 28.70" E

INSTRUMENT AERODROME ELEV 145 FT
APPROACH HEIGHTS RELATED TO
CHART - ICAO THR RWY32 - ELEV 145 FT

APP : 120.7, 284.0
TWR : 118.9, 236.6
GND : 121.9

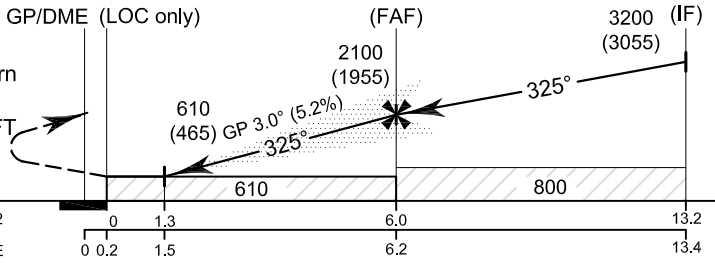
PHITSANULOK/Phitsanulok (VTPP)
ILS or LOC RWY32



100° 00' E 100° 10' E 100° 20' E 100° 30' E

TA 11000 **RDH 56 FT**

Missed Approach :
No turn before MAPt (for LOC only).
Climb straight ahead to 1600 FT, then turn left to intercept outbound R-145 PSL VOR, then proceed to **PUGAN** at 3200 FT and hold or as directed by ATC.



OCA/H	A	B	C	D	GS OUT	Distance (IPSL)							
						1.5 D	2 D	3 D	4 D	5 D	6 D	FAF	
Straight-in approach CAT I	370 (225)					Altitude (Height)	610 (465)	765 (620)	1080 (935)	1395 (1250)	1710 (1565)	2025 (1880)	2100 (1955)
LOC only	610 (465)					Ground Speed	knot	70	90	100	120	140	160
Circling (OCH AAL)	840 (695)		930 (785)			Rate of descent (3.0°)	ft/min	372	478	531	637	743	849

CHANGE: MORSE CODE OF RADIO NAVIGATION AIDS ADDED. WPT NAME: PEBLI ALT.

INSTRUMENT AERODROME ELEV 145 FT
APPROACH HEIGHTS RELATED TO
CHART-ICAO THR RWY32 - ELEV 145 FT

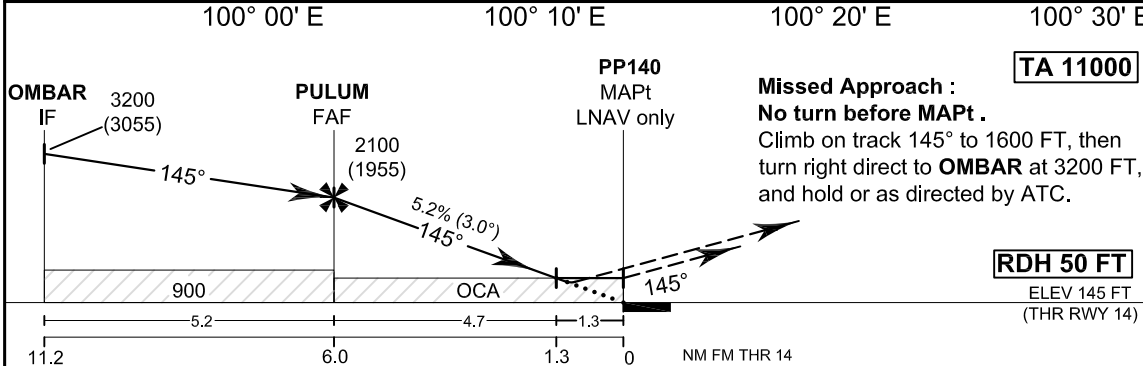
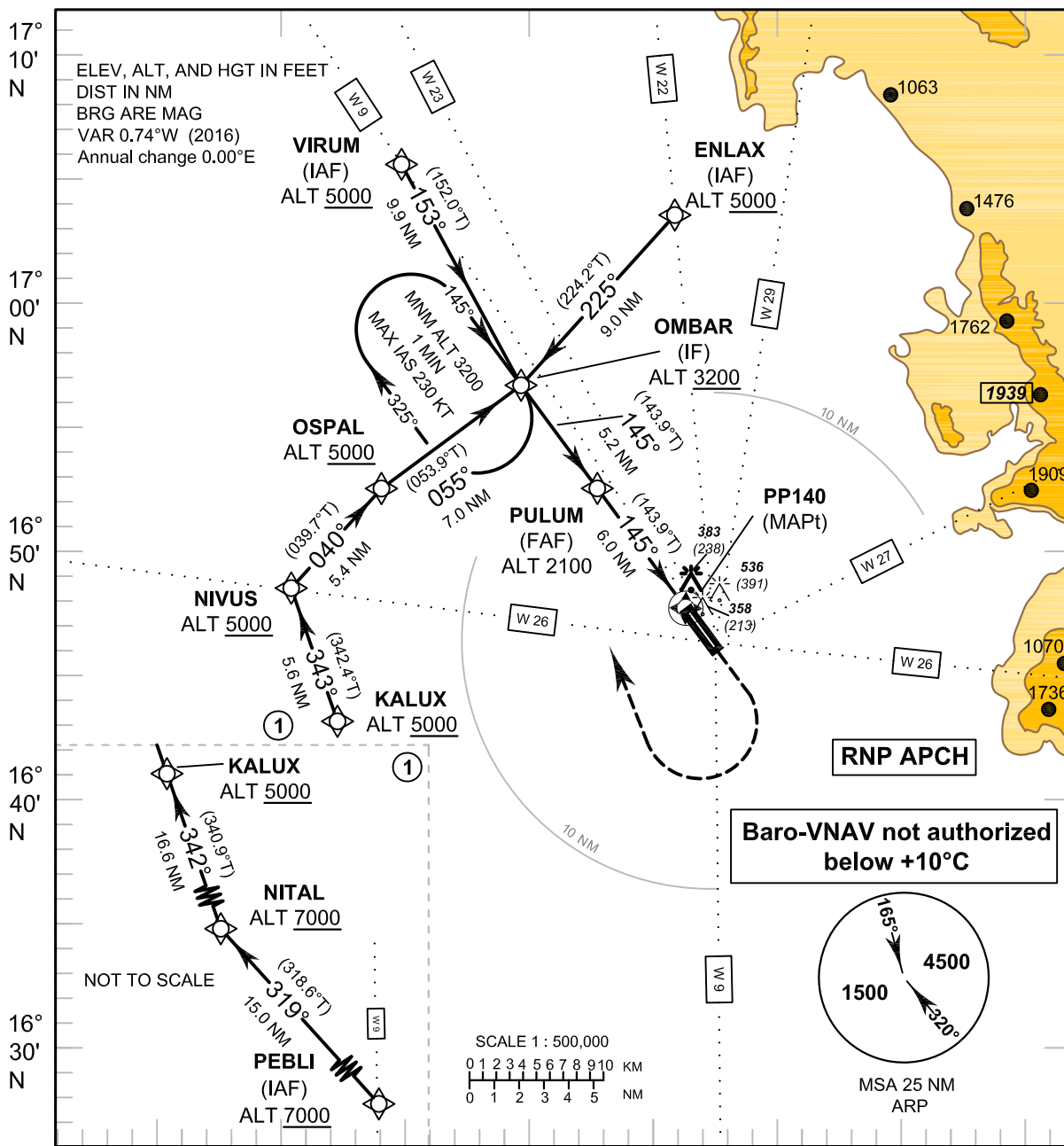
PHITSANULOK/Phitsanulok (VTPP)
ILS or LOC RWY32

Fix / Point		Coordinates	
PAPTU (IAF)	PSL	16° 46' 13.34" N	100° 17' 28.70" E
NIVUS (IAF)	R - 278 / 17.0 D PSL	16° 48' 26.33" N	099° 59' 54.50" E
PEBLI (IAF)	R - 181 / 30.0 D PSL	16° 16' 05.94" N	100° 17' 36.21" E
NOGEM	R - 181 / 17.0 D PSL	16° 29' 09.16" N	100° 17' 32.96" E
DAMRI (IAF)	R - 064 / 17.0 D PSL	16° 53' 47.82" N	100° 33' 21.71" E
KAMAB (IAF)	R - 097 / 19.3 D PSL	16° 44' 09.72" N	100° 37' 31.28" E
PUGAN (IF)	13.4 D IPSL	16° 35' 36.50" N	100° 25' 20.68" E
(FAF)	6.2 D IPSL	16° 41' 27.08" N	100° 20' 55.71" E
MAPt (LOC only) @ THR RWY32	0.2 D IPSL	16° 46' 19.16" N	100° 17' 14.69" E
LOC	IPSL	16° 47' 46.19" N	100° 16' 08.82" E
GP/DME	IPSL	16° 46' 29.87" N	100° 17' 11.63" E
VOR (IAF)	PSL	16° 46' 13.34" N	100° 17' 28.70" E

INSTRUMENT AERODROME ELEV 145 FT
APPROACH HEIGHTS RELATED TO
CHART - ICAO AERODROME ELEV

APP : 120.7, 284.0
TWR : 118.9, 236.6
GND : 121.9

PHITSANULOK/Phitsanulok (VTPP)
RNP RWY14



CHANGE: CHART TITLE.

OCA/H	A	B	C	D	NM to NEXT WPT	FAF	5 NM	4 NM	3 NM	2 NM	1.3 NM
LNAV/VNAV	550 (405)				Altitude (Height)	2100 (1955)	1775 (1630)	1460 (1315)	1140 (995)	825 (680)	610 (465)
LNAV	610 (465)				Ground Speed	knot	70	90	100	120	140
Circling (OCH AAL)	840 (695)		930 (785)		Rate of descent FAF-MAPt (5.2%)	ft/min	369	474	527	632	737

INSTRUMENT AERODROME ELEV 145 FT
APPROACH HEIGHTS RELATED TO
CHART - ICAO AERODROME ELEV

PHITSANULOK/Phitsanulok (VTPP)
RNP RWY14

TABULAR DESCRIPTION

RNP RWY14											
Serial Number	Path Descriptor	Waypoint Identifier	Flyover	Course ° M (° T)	Magnetic Variation	Distance (NM)	Turn Direction	Altitude (FT)	Speed (KT)	VPA/TCH	Navigation Specification
010	IF	PEBLI (IAF)	-	-	+0.74	-	-	+7000	-	-	RNP APCH
020	TF	NITAL	-	319°(318.6°)	+0.74	15.0	R	+7000	-	-	RNP APCH
030	TF	KALUX	-	342°(340.9°)	+0.74	16.6	R	+5000	-	-	RNP APCH
040	TF	NIVUS	-	343°(342.4°)	+0.74	5.6	R	+5000	-	-	RNP APCH
050	TF	OSPAL	-	040°(039.7°)	+0.74	5.4	R	+5000	-	-	RNP APCH
060	TF	OMBAR (IF)	-	055°(053.9°)	+0.74	7.0	-	+3200	-	-	RNP APCH
010	IF	VIRUM (IAF)	-	-	+0.74	-	-	+5000	-	-	RNP APCH
020	TF	OMBAR (IF)	-	153°(152.0°)	+0.74	9.9	-	+3200	-	-	RNP APCH
010	IF	ENLAX (IAF)	-	-	+0.74	-	-	+5000	-	-	RNP APCH
020	TF	OMBAR (IF)	-	225°(224.2°)	+0.74	9.0	-	+3200	-	-	RNP APCH
010	IF	OMBAR (IF)	-	-	+0.74	-	-	+3200	-	-	RNP APCH
020	TF	PULUM (FAF)	-	145°(143.9°)	+0.74	5.2	-	@2100	-	-	RNP APCH
030	TF	PP140 (MAPt)	Y	145°(143.9°)	+0.74	6.0	-	@195	-	-3.0/50	RNP APCH
040	CA	-	-	145°(143.9°)	+0.74	-	-	+1600	-	-	RNP APCH
050	DF	OMBAR (IF)	-	-	+0.74	-	R	+3200	-	-	RNP APCH
060	HM	OMBAR (IF)	Y	145°(143.9°)	+0.74	1 minute	R	+3200	-230	-	RNP APCH

WAYPOINT LIST

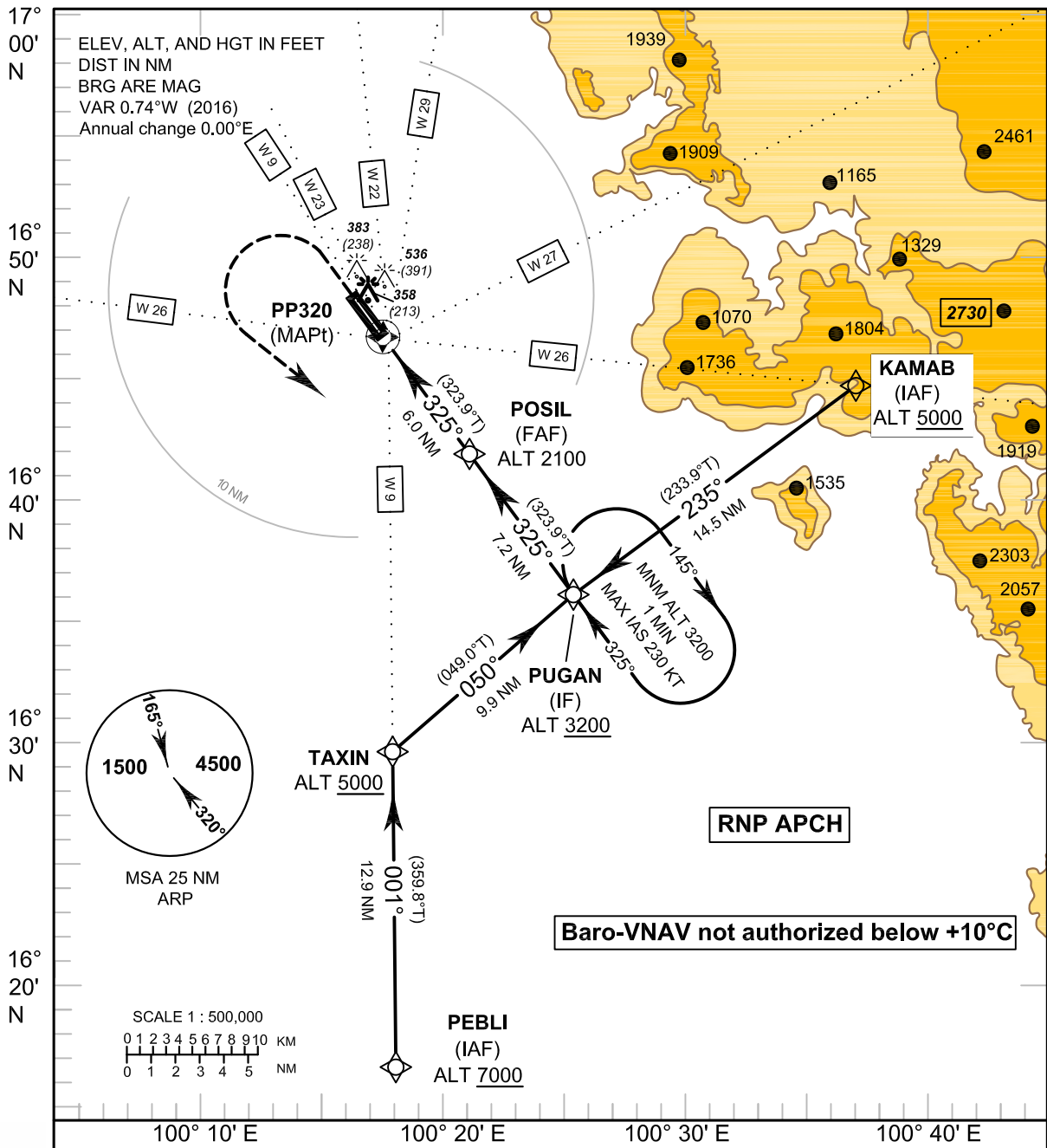
RNP RWY14			
Waypoint Identifier	Coordinates		
PEBLI	16° 16' 05.94" N	100° 17' 36.21" E	
NITAL	16° 27' 22.66" N	100° 07' 18.28" E	
KALUX	16° 43' 07.80" N	100° 01' 39.21" E	
NIVUS	16° 48' 26.33" N	099° 59' 54.50" E	
OSPAL	16° 52' 34.17" N	100° 03' 28.13" E	
VIRUM	17° 05' 28.31" N	100° 04' 31.92" E	
ENLAX	17° 03' 13.58" N	100° 15' 55.67" E	
OMBAR	16° 56' 42.99" N	100° 09' 21.83" E	
PULUM	16° 52' 29.99" N	100° 12' 33.73" E	
PP140 (THR14)	16° 47' 38.00" N	100° 16' 14.99" E	

CHANGE: CHART TITLE.

INSTRUMENT AERODROME ELEV 145 FT
APPROACH HEIGHTS RELATED TO
CHART - ICAO AERODROME ELEV

APP : 120.7, 284.0
TWR : 118.9, 236.6
GND : 121.9

PHITSANULOK/Phitsanulok (VTPP)
RNP RWY32

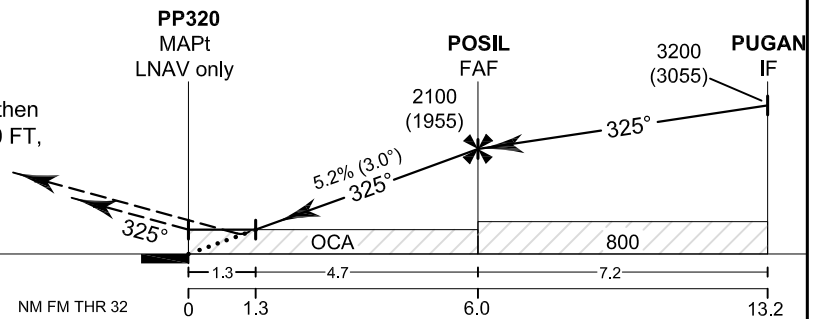


TA 11000

Missed Approach :
No turn before MAPt .
Climb on track 325° to 1600 FT, then
turn left direct to **PUGAN** at 3200 FT,
and hold or as directed by ATC.

RDH 50 FT

ELEV 145 FT
(THR RWY 32)



CHANGE: CHART TITLE.

OCA/H	A	B	C	D	NM to NEXT WPT	1.3 NM	2 NM	3 NM	4 NM	5 NM	FAF
LNAV/VNAV	460 (315)				Altitude (Height)	610 (465)	825 (680)	1140 (995)	1460 (1315)	1775 (1630)	2100 (1955)
LNAV	610 (465)				Ground Speed	knot	70	90	100	120	140
Circling (OCH AAL)	840 (695)	930 (785)		Rate of descent FAF-MAPt (5.2%)	ft/min	369	474	527	632	737	843

INSTRUMENT AERODROME ELEV 145 FT
APPROACH HEIGHTS RELATED TO
CHART - ICAO AERODROME ELEV

PHITSANULOK/Phitsanulok (VTPP)
RNP RWY32

TABULAR DESCRIPTION

RNP RWY32												
Serial Number	Path Descriptor	Waypoint Identifier	Flyover	Course ° M (° T)	Magnetic Variation	Distance (NM)	Turn Direction	Altitude (FT)	Speed (KT)	VPA/TCH	Navigation Specification	
010	IF	PEBLI (IAF)	-	-	+0.74	-	-	+7000	-	-	RNP APCH	
020	TF	TAXIN	-	001°(359.8°)	+0.74	12.9	R	+5000	-	-	RNP APCH	
030	TF	PUGAN (IF)	-	050°(049.0°)	+0.74	9.9	-	+3200	-	-	RNP APCH	
010	IF	KAMAB (IAF)	-	-	+0.74	-	-	+5000	-	-	RNP APCH	
020	TF	PUGAN (IF)	-	235°(233.9°)	+0.74	14.5	-	+3200	-	-	RNP APCH	
001	IF	PUGAN (IF)	-	-	+0.74	-	-	+3200	-	-	RNP APCH	
002	TF	POSIL (FAF)	-	325°(323.9°)	+0.74	7.2	-	@2100	-	-	RNP APCH	
003	TF	PP320 (MAPt)	Y	325°(323.9°)	+0.74	6.0	-	@195	-	-3.0/50	RNP APCH	
004	CA	-	-	325°(323.9°)	+0.74	-	-	+1600	-	-	RNP APCH	
005	DF	PUGAN (IF)	-	-	+0.74	-	L	+3200	-	-	RNP APCH	
006	HM	PUGAN (IF)	Y	325°(323.9°)	+0.74	1 minute	R	+3200	-230	-	RNP APCH	

WAYPOINT LIST

RNP RWY32		
Waypoint Identifier	Coordinates	
PEBLI	16° 16' 05.94" N	100° 17' 36.21" E
TAXIN	16° 29' 04.24" N	100° 17' 32.98" E
KAMAB	16° 44' 09.72" N	100° 37' 31.28" E
PUGAN	16° 35' 36.50" N	100° 25' 20.68" E
POSIL	16° 41' 27.08" N	100° 20' 55.71" E
PP320 (THR32)	16° 46' 19.16" N	100° 17' 14.69" E

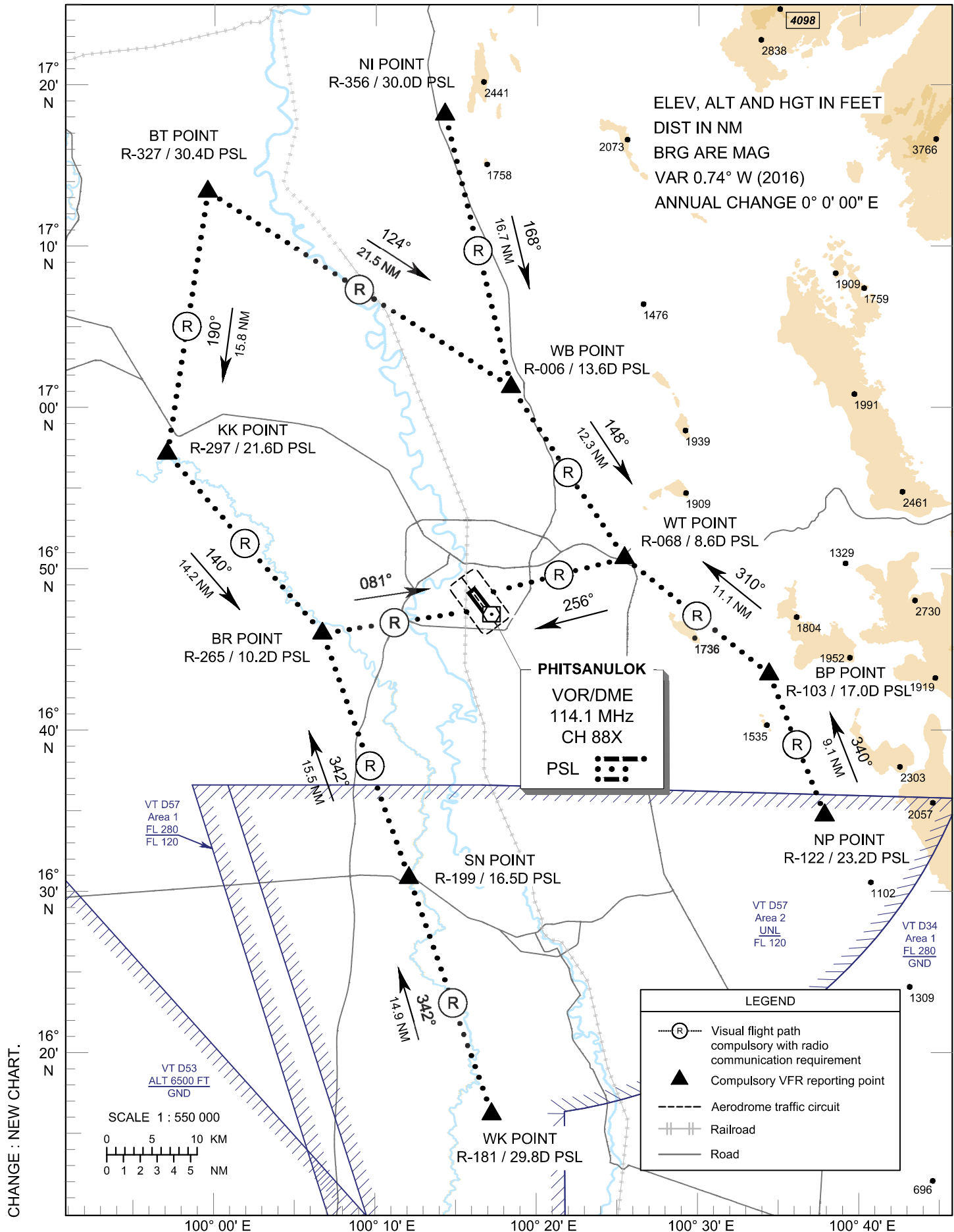
CHANGE: CHART TITLE.

**VFR ENTRY
PROCEDURE
CHART**

**AERODROME ELEV 145 FT
HEIGHT RELATED TO
AERODROME ELEV**

APP : 120.7, 284.0
TWR : 118.9, 236.6
GND : 121.9
ATIS : 127.4

**PHITSANULOK /
Phitsanulok (VTPP)
RWY 14/32**



**VFR ENTRY
PROCEDURE
CHART**

**AERODROME ELEV 145 FT
HEIGHT RELATED TO
AERODROME ELEV**

**PHITSANULOK /
Phitsanulok (VTPP)
RWY 14/32**

ARR-RWY14/32 (From North)

Enter via most direct route through the NI POINT, then heading 168° to WB POINT, heading 148° to WT POINT, then join aerodrome traffic circuit when direct by ATC.

ARR-RWY14/32 (From North - West)

Enter via most direct route through the BT POINT, then heading 124° to WB POINT, heading 148° to WT POINT, then join aerodrome traffic circuit when direct by ATC.

Enter via most direct route through the BT POINT, then heading 190° to KK POINT, heading 140° to BR POINT, then join aerodrome traffic circuit when direct by ATC.

ARR-RWY14/32 (From East)

Enter via most direct route through the NP POINT, then heading 340° to BP POINT, heading 310° to WT POINT, then join aerodrome traffic circuit when direct by ATC.

ARR-RWY14/32 (From South)

Enter via most direct route through the WK POINT, then heading 342° to SN POINT, heading 342° to BR POINT, then join aerodrome traffic circuit when direct by ATC.

Reporting points	Visual Reference	Radial / DME	Coordinates	
			Latitude	Longitude
"BP" or BRAVO - PAPA Point	Wat Nam Pat, Ban Nam Pat community	R-103 / 17.0D PSL	16° 42' 30.77" N	100° 34' 43.59" E
"BR" or BRAVO - ROMIO Point	Football pitch, Bo Wittaya Bang Rakam School	R-265 / 10.2D PSL	16° 45' 08.12" N	100° 06' 56.78" E
"BT" or BRAVO - TANGO Point	Bridge, Ban Thung Pa Krathin	R-327 / 30.4D PSL	17° 11' 39.79" N	099° 59' 57.75" E
"KK" or KILO - KILO Point	Wat Kong Krailat	R-297 / 21.6D PSL	16° 55' 58.33" N	099° 57' 20.73" E
"NI" or NOVEMBER - INDIA Point	Ridge near Na-In	R-356 / 30.0D PSL	17° 16' 12.50" N	100° 14' 47.31" E
"NP" or NOVEMBER - PAPA Point	Noen Maprang Junction	R-122 / 23.2D PSL	16° 34' 01.58" N	100° 38' 06.30" E
"SN" or SIERRA - NOVEMBER Point	Bridge Samngam district	R-199 / 16.5D PSL	16° 30' 26.88" N	100° 12' 14.18" E
"WB" or WHISKY - BRAVO Point	Wat Bot, Khwae Noi River bend	R-006 / 13.6D PSL	16° 59' 50.32" N	100° 18' 47.19" E
"WK" or WHISKY - KILO Point	Wat Yang Khao Sutthawat	R-181 / 29.8D PSL	16° 16' 15.31" N	100° 17' 17.11" E
"WT" or WHISKY - TANGO Point	Wang Thong Junction	R-068 / 8.6D PSL	16° 49' 32.39" N	100° 25' 47.00" E
PHITSANULOK VOR/DME (PSL)	PHITSANULOK VOR/DME Station	-	16° 46' 13.34" N	100° 17' 28.70" E

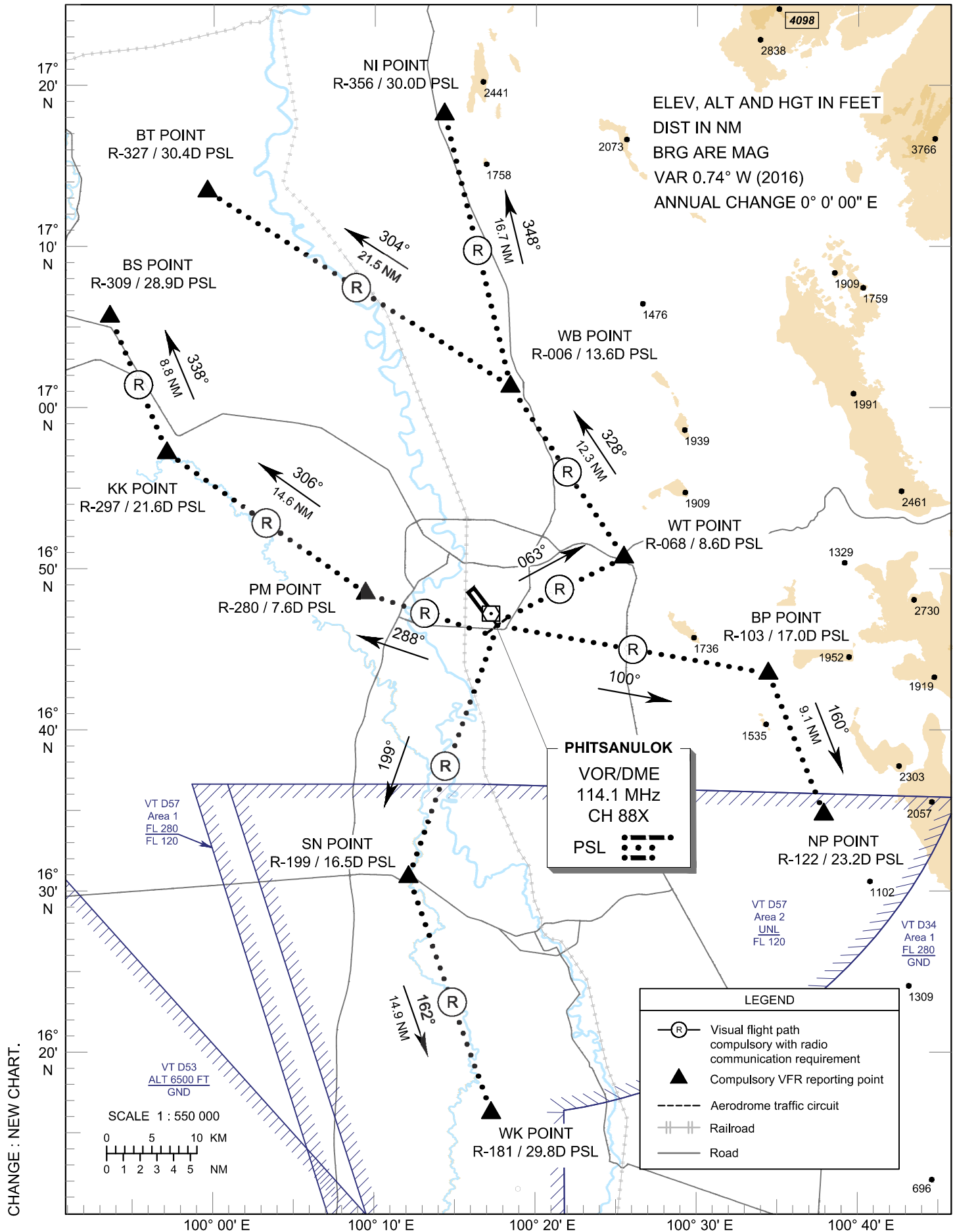
CHAGE : NEW CHART.

**VFR EXIT
PROCEDURE
CHART**

**AERODROME ELEV 145 FT
HEIGHT RELATED TO
AERODROME ELEV**

APP : 120.7, 284.0
TWR : 118.9, 236.6
GND : 121.9
ATIS : 127.4

**PHITSANULOK /
Phitsanulok (VTPP)
RWY 14**



**VFR EXIT
PROCEDURE
CHART**

AERODROME ELEV 145 FT
HEIGHT RELATED TO
AERODROME ELEV

**PHITSANULOK /
Phitsanulok (VTPP)
RWY 14**

DEP-RWY14 (To North)

After departure left turn heading 063° to WT POINT, then heading 328° to WB POINT, then heading 348° to NI POINT, then proceed to destination.

DEP-RWY14 (To North - West)

After departure left turn heading 063° to WT POINT, then heading 328° to WB POINT, then heading 304° to BT POINT, then proceed to destination.

After departure right turn heading 288° to PM POINT, then heading 306° to KK POINT, then heading 338° to BS POINT, then proceed to destination.

DEP-RWY14 (To East)

After departure left turn heading 100° to BP POINT, then heading 160° to NP POINT, then proceed to destination.

DEP-RWY14 (To South)

After departure right turn heading 199° to SN POINT, then heading 162° to WK POINT, then proceed to destination.

Reporting points	Visual Reference	Radial / DME	Coordinates	
			Latitude	Longitude
"BP" or BRAVO - PAPA Point	Wat Nam Pat, Ban Nam Pat community	R-103 / 17.0D PSL	16° 42' 30.77" N	100° 34' 43.59" E
"BS" or BRAVO - SIERRA Point	Bueng Yai Ban Suan district	R-309 / 28.9D PSL	17° 04' 10.76" N	099° 53' 49.35" E
"BT" or BRAVO - TANGO Point	Bridge, Ban Thung Pa Krathin	R-327 / 30.4D PSL	17° 11' 39.79" N	099° 59' 57.75" E
"KK" or KILO - KILO Point	Wat Kong Krailat	R-297 / 21.6D PSL	16° 55' 58.33" N	099° 57' 20.73" E
"NI" or NOVEMBER - INDIA Point	Ridge near Na-In	R-356 / 30.0D PSL	17° 16' 12.50" N	100° 14' 47.31" E
"NP" or NOVEMBER - PAPA Point	Noen Maprang Junction	R-122 / 23.2D PSL	16° 34' 01.58" N	100° 38' 06.30" E
"PM" or PAPA - MIKE Point	Wat Pong Mo Khao	R-280 / 7.6D PSL	16° 47' 27.25" N	100° 09' 40.51" E
"SN" or SIERRA - NOVEMBER Point	Bridge Samngam district	R-199 / 16.5D PSL	16° 30' 26.88" N	100° 12' 14.18" E
"WB" or WHISKY - BRAVO Point	Wat Bot, Khwae Noi River bend	R-006 / 13.6D PSL	16° 59' 50.32" N	100° 18' 47.19" E
"WK" or WHISKY - KILO Point	Wat Yang Khao Sutthawat	R-181 / 29.8D PSL	16° 16' 15.31" N	100° 17' 17.11" E
"WT" or WHISKY - TANGO Point	Wang Thong Junction	R-068 / 8.6D PSL	16° 49' 32.39" N	100° 25' 47.00" E
PHITSANULOK VOR/DME (PSL)	PHITSANULOK VOR/DME Station	-	16° 46' 13.34" N	100° 17' 28.70" E

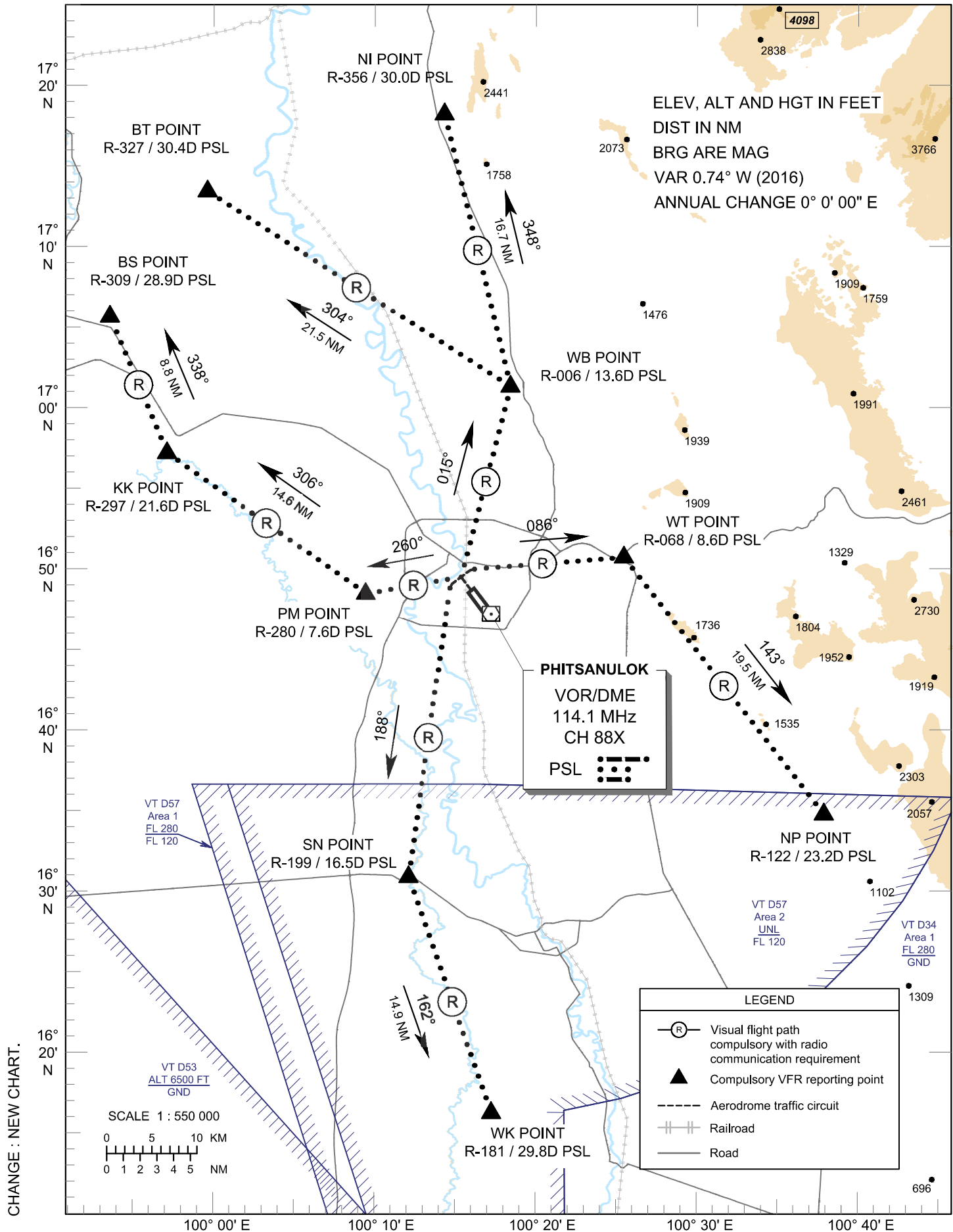
CHANGE : NEW CHART.

**VFR EXIT
PROCEDURE
CHART**

**AERODROME ELEV 145 FT
HEIGHT RELATED TO
AERODROME ELEV**

APP : 120.7, 284.0
TWR : 118.9, 236.6
GND : 121.9
ATIS : 127.4

**PHITSANULOK /
Phitsanulok (VTPP)
RWY 32**



**VFR EXIT
PROCEDURE
CHART**

AERODROME ELEV 145 FT
HEIGHT RELATED TO
AERODROME ELEV

**PHITSANULOK /
Phitsanulok (VTPP)
RWY 32**

DEP-RWY32 (To North)

After departure right turn heading 015° to WB POINT, then heading 348° to NI POINT, then proceed to destination.

DEP-RWY32 (To North - West)

After departure right turn heading 015° to WB POINT, then heading 304° to BT POINT, then proceed to destination.

After departure left turn heading 260° to PM POINT, then heading 306° to KK POINT, then heading 338° to BS POINT, then proceed to destination.

DEP-RWY32 (To East)

After departure right turn heading 086° to WT POINT, then heading 143° to NP POINT, then proceed to destination.

DEP-RWY32 (To South)

After departure left turn heading 188° to SN POINT, then heading 162° to WK POINT, then proceed to destination.

Reporting points	Visual Reference	Radial / DME	Coordinates	
			Latitude	Longitude
"BS" or BRAVO - SIERRA Point	Bueng Yai Ban Suan district	R-309 / 28.9D PSL	17° 04' 10.76" N	099° 53' 49.35" E
"BT" or BRAVO - TANGO Point	Bridge, Ban Thung Pa Krathin	R-327 / 30.4D PSL	17° 11' 39.79" N	099° 59' 57.75" E
"KK" or KILO - KILO Point	Wat Kong Krailat	R-297 / 21.6D PSL	16° 55' 58.33" N	099° 57' 20.73" E
"NI" or NOVEMBER - INDIA Point	Ridge near Na-In	R-356 / 30.0D PSL	17°16' 12.50" N	100° 14' 47.31" E
"NP" or NOVEMBER - PAPA Point	Noen Maprang Junction	R-122 / 23.2D PSL	16°34' 01.58" N	100° 38' 06.30" E
"PM" or PAPA - MIKE Point	Wat Pong Mo Khao	R-280 / 7.6D PSL	16°47' 27.25" N	100° 09' 40.51" E
"SN" or SIERRA - NOVEMBER Point	Bridge Samngam district	R-199 / 16.5D PSL	16° 30' 26.88" N	100° 12' 14.18" E
"WB" or WHISKY - BRAVO Point	Wat Bot, Khwae Noi River bend	R-006 / 13.6D PSL	16° 59' 50.32" N	100° 18' 47.19" E
"WK" or WHISKY - KILO Point	Wat Yang Khao Sutthawat	R-181 / 29.8D PSL	16° 16' 15.31" N	100° 17' 17.11" E
"WT" or WHISKY - TANGO Point	Wang Thong Junction	R-068 / 8.6D PSL	16° 49' 32.39" N	100° 25' 47.00" E
PHITSANULOK VOR/DME (PSL)	PHITSANULOK VOR/DME Station	-	16° 46' 13.34" N	100° 17' 28.70" E

CHANGE : NEW CHART.