

VTPH AD 2.1 AERODROME LOCATION INDICATOR AND NAME

VTPH - PRACHUAP KHIRI KHAN / HUA HIN AIRPORT

VTPH AD 2.2 AERODROME GEOGRAPHICAL AND ADMINISTRATIVE DATA

1	ARP coordinates and site at AD	123749.15N 0995712.40E
2	Direction and distance from (city)	7 KM, NE from city
3	Elevation/Reference temperature	62 FT/30°C
4	Geoid Undulation at AD ELEV PSN	NIL
5	MAG VAR/Annual change	0.56°W (2016) /0.01°E
6	AD Administration, address, telephone, telefax, telex, AFS	Director of Hua Hin Airport Hua Hin Airport Phetkasem Road, Amphoe Hua Hin Prachuap Khirikhan Province Thailand Tel: +663 252 0182 Fax: +663 252 0182 AFS: VTPHYDYX
7	Types of traffic permitted (IFR/VFR)	IFR/VFR
8	Remarks	Operator: Department of Airports

VTPH AD 2.3 OPERATIONAL HOURS

1	Aerodrome Operator	2300-1100
2	Customs and immigration	On request
3	Health and sanitation	On request
4	AIS Briefing Office	NIL
5	ATS Reporting Office (ARO)	2300-1100
6	MET Briefing Office	NIL
7	ATS	2300-1100
8	Fuelling	2330-1530 Other than this period 1 HR PN to airport
9	Handling	NIL
10	Security	H24
11	De-icing	NIL
12	Remarks	ATS Reporting Office (ARO): Located at Hua Hin Air Traffic Control Centre (1st floor of tower building) Tel: +663 252 2512 Fax: +663 252 0831 Ext. 5230

VTPH AD 2.4 HANDLING SERVICES AND FACILITIES

1	Cargo-handling facilities	NIL
2	Fuel/oil types	JET A-1, AVGAS 100KK, JP8
3	Fuelling facilities/capacity	2 JET A-1 Refuellers @ 12,000 L 1 AVGAS 100LL Refueller @ 5,000 L 750-1100 L/Min
4	De-icing facilities	NIL
5	Hangar space for visiting aircraft	NIL
6	Repair facilities for visiting aircraft	NIL
7	Remarks	NIL

VTPH AD 2.5 PASSENGER FACILITIES

1	Hotels	In the city
2	Restaurants	In the airport
3	Transportation	Limousines, car rent, Taxi
4	Medical facilities	First AID at AD and hospital in the city
5	Bank and Post Office	In the city
6	Tourist Office	NIL
7	Remarks	NIL

VTPH AD 2.6 RESCUE AND FIRE FIGHTING SERVICES

1	AD category for fire fighting	Category 6
2	Rescue equipment	Yes
3	Capability for removal of disabled aircraft	NIL
4	Remarks	NIL

VTPH AD 2.7 SEASONAL AVAILABILITY - CLEARING

1	Types of clearing equipment	NIL
2	Clearance priorities	NIL
3	Remarks	The aerodrome is available all seasons.

VTPH AD 2.8 APRONS, TAXIWAYS AND CHECK LOCATIONS/POSITIONS DATA

1	Apron surface and strength	Surface: Concrete Strength: PCN 45/R/B/Y/T
2	Taxiway width, surface and strength	Width: 23 M Surface: Concrete and asphalt Strength: PCN 42/F/B/Y/T
3	Altimeter checkpoint location and elevation	Location : At Apron Elevation : 6.786 M (22.258 FT)
4	VOR checkpoints	NIL
5	INS checkpoints	NIL
6	Remarks	NIL

VTPH AD 2.9 SURFACE MOVEMENT GUIDANCE AND CONTROL SYSTEM AND MARKINGS

1	Use of aircraft stand ID signs, TWY guide lines and visual docking/parking guidance system of aircraft stands	NIL
2	RWY and TWY markings and LGT	RWY and TWY Marked and lighted
3	Stop bars	NIL
4	Remarks	NIL

VTPH AD 2.10 AERODROME OBSTACLES

In approach/TKOF areas			In circling areas and at AD		Remarks
1			2		
RWY/Area affected	Obstacle type Elevation Markings/LGT	Coordinates	Obstacle type Elevation Markings/LGT	Coordinates	
a	b	c	a	b	
-	Radio mast HGT 85 M painted red/white LGTD on top	123430N 0995730E	NIL		NIL
	Radio mast HGT 60 M painted red/white LGTD on top	123748N 0995713E			
	Antenna HGT 156 FT AGL Marked and LGTD	124004.57N 0995704.23E			

VTPH AD 2.11 METEOROLOGICAL INFORMATION PROVIDED

1	Associated MET Office	Aeronautical Meteorological Station-Hua Hin, Southern East-Coast Meteorological Center, Thai Meteorological Department (TMD)
2	Hours of service MET Office outside hours	2200-1100 NIL
3	Office responsible for TAF preparation Periods of validity	Supply TAF from Southern East-Coast Meteorological Center 24 HR
4	Type of landing forecast Interval of issuance	TREND 1 HR
5	Briefing/consultation provided	Personal Consultation Tel: +663 252 0831 ext. 5229
6	Flight documentation Language(s) used	NIL
7	Charts and other information available for briefing or consultation	S, U85, Daily Weather Forecast, satellite and radar images
8	Supplementary equipment available for providing information	Automated Weather Observation System (AWOS) and Weather Radar
9	ATS units provided with information	Hua Hin TWR
10	Additional information (limitation of service, etc.)	NIL

VTPH AD 2.12 RUNWAY PHYSICAL CHARACTERISTICS

Designations RWY NR	TRUE BRG	Dimensions of RWY(M)	Strength (PCN) and surface of RWY and SWY	THR coordinates RWY end coordinates THR geoid undulation	THR elevation and highest elevation of TDZ of precision APP RWY
1	2	3	4	5	6
16	159.96°	2100x35	PCN 42/F/B/Y/T Concrete and asphalt	123841.01N 0995652.75E	THR 62 FT TDZ 62 FT
34	339.96°	2100x35	PCN 42/F/B/Y/T Concrete and asphalt	123741.54N 0995715.28E	THR 17 FT TDZ 22 FT

Slope of RWY-SWY	SWY dimensions (M)	CWY dimensions (M)	Strip dimensions (M)	OFZ	Remarks
7	8	9	10	11	12
NIL	NIL	NIL	2236x120	NIL	NIL
NIL	60x35	NIL	2236x120	NIL	NIL

VTPH AD 2.13 DECLARED DISTANCES

RWY Designator	TORA (M)	TODA (M)	ASDA (M)	LDA (M)	Remarks
1	2	3	4	5	6
16	2100	2100	2100	2100	NIL
34	2100	2100	2160	1950	NIL

VTPH AD 2.14 APPROACH AND RUNWAY LIGHTING

RWY Designator	APCH LGT type LEN INTST	THR LGT colour WBAR	VASIS (MEHT) PAPI	TDZ, LGT LEN	RWY Centre Line LGT Length, spacing, colour, INTST	RWY edge LGT LEN, spacing, colour INTST	RWY End LGT colour WBAR	SWY LGT LEN (M) colour	Remarks
1	2	3	4	5	6	7	8	9	10
16	NIL	NIL	PAPI Left 3° (15.72 M)	NIL	NIL	2100 M 60 M White, LIH	Red	NIL	NIL
34	NIL	NIL	NIL	NIL	NIL	2100 M 60 M White, LIH	Red	NIL	NIL

* RWY 16 PAPI restriction. Due mountain on right side of approach path, distance approximately 6 NM from RWY, 1300 FT height, aircraft approach to RWY 16 Should be careful,

VTPH AD 2.15 OTHER LIGHTING, SECONDARY POWER SUPPLY

1	ABN/IBN location, characteristics and hours of operation	ABN: At Tower Building, FLG W EV 7 SEC
2	LDI location and LGT Anemometer location and LGT	NIL
3	TWY edge and centre line lighting	EDGE: All TWY
4	Secondary power supply/switch-over time	Secondary power supply to all lighting at AD. Switch-over time 12 SEC.
5	Remarks	NIL

VTPH AD 2.16 HELICOPTER LANDING AREA

1	Coordinates TLOF or THR of FATO Geoid undulation	NIL
2	TLOF and/or FATO elevation M/FT	NIL
3	TLOF and FATO area dimensions, surface, strength, marking	NIL
4	True and MAG BRG of FATO	NIL
5	Declared distance available	NIL
6	APP and FATO lighting	NIL
7	Remarks	NIL

VTPH AD 2.17 ATS AIRSPACE

1	Designation and lateral limits	A circle of 5 NM radius centred on HHN DVOR/DME (123804.04N0995704.23E). Excluding VTR3.
2	Vertical limits	2000 FT/AGL
3	Airspace classification	D
4	ATS unit call sign Language(s)	Hua Hin Tower English, Thai
5	Transition altitude	11000 FT
6	Remarks	NIL

VTPH AD 2.18 ATS COMMUNICATION FACILITIES

Service designation	Call sign	Frequency	Hours of operation	Remarks
1	2	3	4	5
APP	Hua Hin Approach	126.2 MHZ 121.5 MHZ ¹⁾	As AD OPR HR	¹⁾ Emergency frequency
TWR	Hua Hin Tower	122.7 MHZ 236.6 MHZ 121.5 MHZ ¹⁾ 243.0 MHZ ¹⁾	As AD OPR HR	
GND	Hua Hin Ground	121.9 MHZ	As AD OPR HR	
ATIS	Hua Hin Airport	126.8 MHZ	As AD OPR HR	

VTPH AD 2.19 RADIO NAVIGATION AND LANDING AIDS

Type of aid, MAG VAR CAT of ILS/MLS (For VOR/ILS/ MLS, give declination)	ID	Frequency	Hours of operation	Position of transmitting antenna coordinates	Elevation of DME transmitting antenna	Remarks
1	2	3	4	5	6	7
NDB	HN	213 KHZ	H24	123842.03N 0995646.49E	NIL	The coverage orbit data refer to commissioning check as follows: <ol style="list-style-type: none"> 1. 50 NM orbit flown from bearing 001°-179° (CW) at altitude 1 500 FT 2. 30 NM orbit flown from bearing 180°-360° (CW) at altitude 4 000 FT (due to border limited) 3. Due to the fluctuation of needle is out of tolerance from bearing 180°-330°
DVOR/DME	HHN	113.3 MHZ CH80X	H24	123804.04N 0995704.23E	NIL	DVOR/DME restriction, due to terrain surround DVOR/DME station coverage check does not provide adequate signal 40 NM at required altitude in various areas as follows: <ol style="list-style-type: none"> 1. 40 NM clockwise orbit <ul style="list-style-type: none"> - Radial 001°-170° altitude should not below 3 000 FT - Radial 171°-210° altitude should not below 7 000 FT - Radial 301°-340° altitude should not below 10 000 FT - Radial 340°-360° altitude should not below 3 000 FT 2. 30 NM clockwise orbit (Due to border limited) <ul style="list-style-type: none"> - Radial 211°- 300° altitude should not below 10 000 FT 3. Radial 341° distance 10.3 DME at altitude 4 000 FT found roughness out of tolerance

VTPH AD 2.20 LOCAL AERODROME REGULATIONS

Aerodrome services are specified only for Government owned aircraft, State enterprise aircraft, Airline's scheduled flights and not be allowed to use as the alternate aerodrome

VTPH AD 2.21 NOISE ABATEMENT PROCEDURES

NIL

VTPH AD 2.22 FLIGHT PROCEDURES

1. Types of ATC Services

Within Hua Hin TMA (Class D Airspace), Hua Hin approach control will provide VFR/IFR flights with ATS surveillance services based on only partial radar coverage from Suvarnabhumi and Don Mueang SSRs. Procedural control service will be provided in the remaining areas.

2. VFR PROCEDURES

Details of VFR entry and exit procedures, see charts.

3. SPEED CONTROL PROCEDURE IN HUA HIN TMA

- a) All arriving turbo-propeller and turbo-jet aircraft when flying below 10000 FT AMSL are subject to fly not faster than indicated air speed 250 knots unless authorized by ATC.
- b) Speed will be reduced to 220 knots during 20-25 track miles from touchdown.
- c) 180 knots at Intermediate fix (Including aircraft from RNAV STAR), or shortly before closing heading to intercept or to establish the final course,
- d) 150 to 160 knots at FAP or FAF; all speed to be flown as accurately as possible. At the other times, speed control may be applied on a tactical basis to extent determined by ATC.
- e) Pilots who unable to comply with the speed limits specifics above for reasons of flight safety and/or weather conditions should inform ATC and state the speed acceptable.
- f) ATC will notify that the aircraft may keep its preferred speed without restriction and will use the phrase "NO SPEED RESTRICTIONS". An instruction to notify that the aircraft need no longer comply with the previous issued speed restriction, the phrase "RESUME NORMAL SPEED" will be used.
- g) All aircraft navigating under conditions of RNAV STARs shall conform to speed limitation as published then at IF pilot shall comply with speed control procedures unless otherwise instructed by ATC.
- h) If the pilots do not comply, the flight shall follow ATC instruction for re-sequencing.

NOTE - an instruction to "RESUME NORMAL SPEED" does not cancel speed restrictions that applicable to published procedure of upcoming segments of flight, aircraft shall comply speed restrictions specified in a) b) c) and d)

VTPH AD 2.23 ADDITIONAL INFORMATION**1. BIRD CONCENTRATIONS**

Bird concentration in the vicinity of an aerodrome.

VTPH AD 2.24 CHARTS RELATED TO AN AERODROME

Chart name	Page
Aerodrome Chart - ICAO	AD 2-VTPH-2-1
Instrument Approach Chart - ICAO - NDB RWY 16	AD 2-VTPH-8-1
Instrument Approach Chart - ICAO - VOR RWY 16	AD 2-VTPH-8-3
Instrument Approach Chart - ICAO - VOR RWY 16 (Fix and point list table)	AD 2-VTPH-8-4
Instrument Approach Chart - ICAO - RNP RWY 16	AD 2-VTPH-8-5
Instrument Approach Chart - ICAO - RNP RWY 16 (Tabular description)	AD 2-VTPH-8-6
VFR ENTRY PROCEDURE CHART - RWY 16/34	AD 2-VTPH-9-1
VFR ENTRY PROCEDURE CHART - RWY 16/34 (Tabular description)	AD 2-VTPH-9-2
VFR ENTRY PROCEDURE FOR HELICOPTER CHART - RWY 16/34	AD 2-VTPH-9-3
VFR ENTRY PROCEDURE FOR HELICOPTER CHART - RWY 16/34 (Tabular description)	AD 2-VTPH-9-4
VFR EXIT PROCEDURE CHART - RWY 16	AD 2-VTPH-9-5
VFR EXIT PROCEDURE CHART - RWY 16 (Tabular description)	AD 2-VTPH-9-6
VFR EXIT PROCEDURE CHART - RWY 34	AD 2-VTPH-9-7
VFR EXIT PROCEDURE CHART - RWY 34 (Tabular description)	AD 2-VTPH-9-8
VFR EXIT PROCEDURE FOR HELICOPTER CHART - RWY 16	AD 2-VTPH-9-9
VFR EXIT PROCEDURE FOR HELICOPTER CHART - RWY 16 (Tabular description)	AD 2-VTPH-9-10
VFR EXIT PROCEDURE FOR HELICOPTER CHART - RWY 34	AD 2-VTPH-9-11
VFR EXIT PROCEDURE FOR HELICOPTER CHART - RWY 34 (Tabular description)	AD 2-VTPH-9-12

INTENTIONALLY BLANK

AERODROME CHART-ICAO

12° 37' 49" N ELEV 62 ft
99° 57' 12" E 19 m

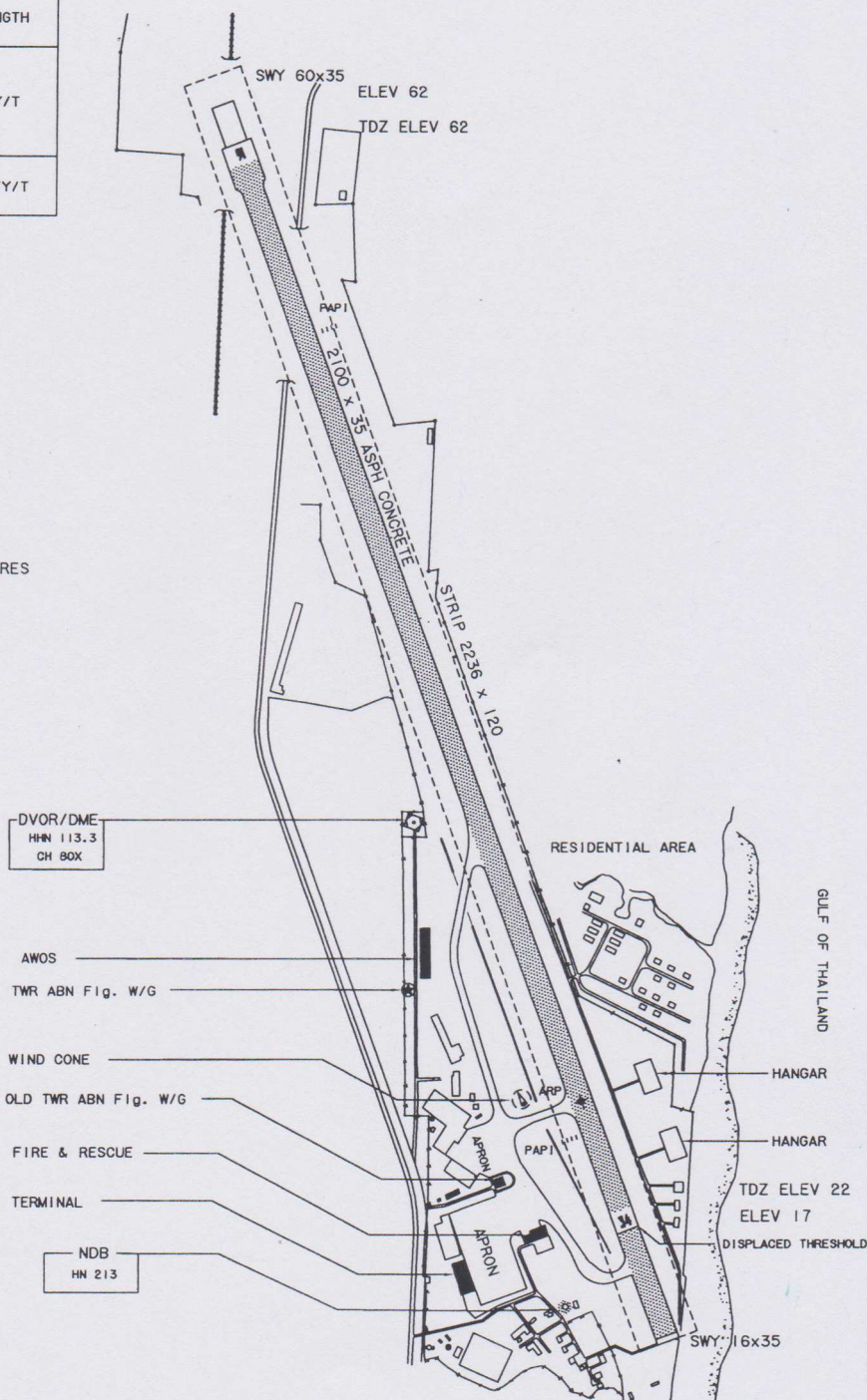
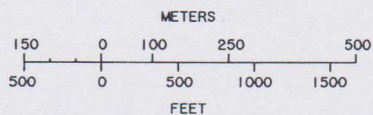
TWR 122.7

PRACHUAP KHIRI KHAN / Hua hin

RWY	DIRECTION	THR	BEARING STRENGTH
16	160°	12° 38' 41.01" N	PCN 42/F/B/Y/T
		99° 56' 52.76" E	
34	340°	12° 37' 41.54" N	PCN 45/R/B/Y/T
		99° 57' 15.28" E	
APRON			PCN 45/R/B/Y/T

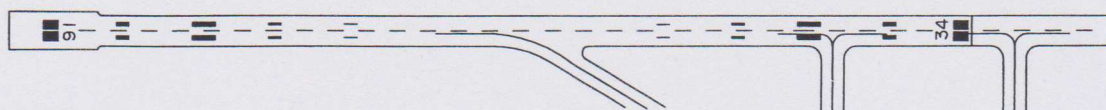
VAR 0° 06' W
(2001)
ANNUAL RATE OF CHANGE 3"E

ELEVATIONS IN FEET AND DIMENSIONS IN METRES
BEARINGS ARE MAGNETIC

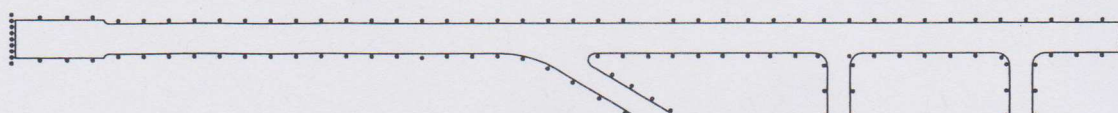


Remark : COORDINATE ARE WGS-84

MARKING AIDS RWY 16/34 AND EXIT TWY



LIGHTING AIDS RWY 16/34 AND EXIT TWY



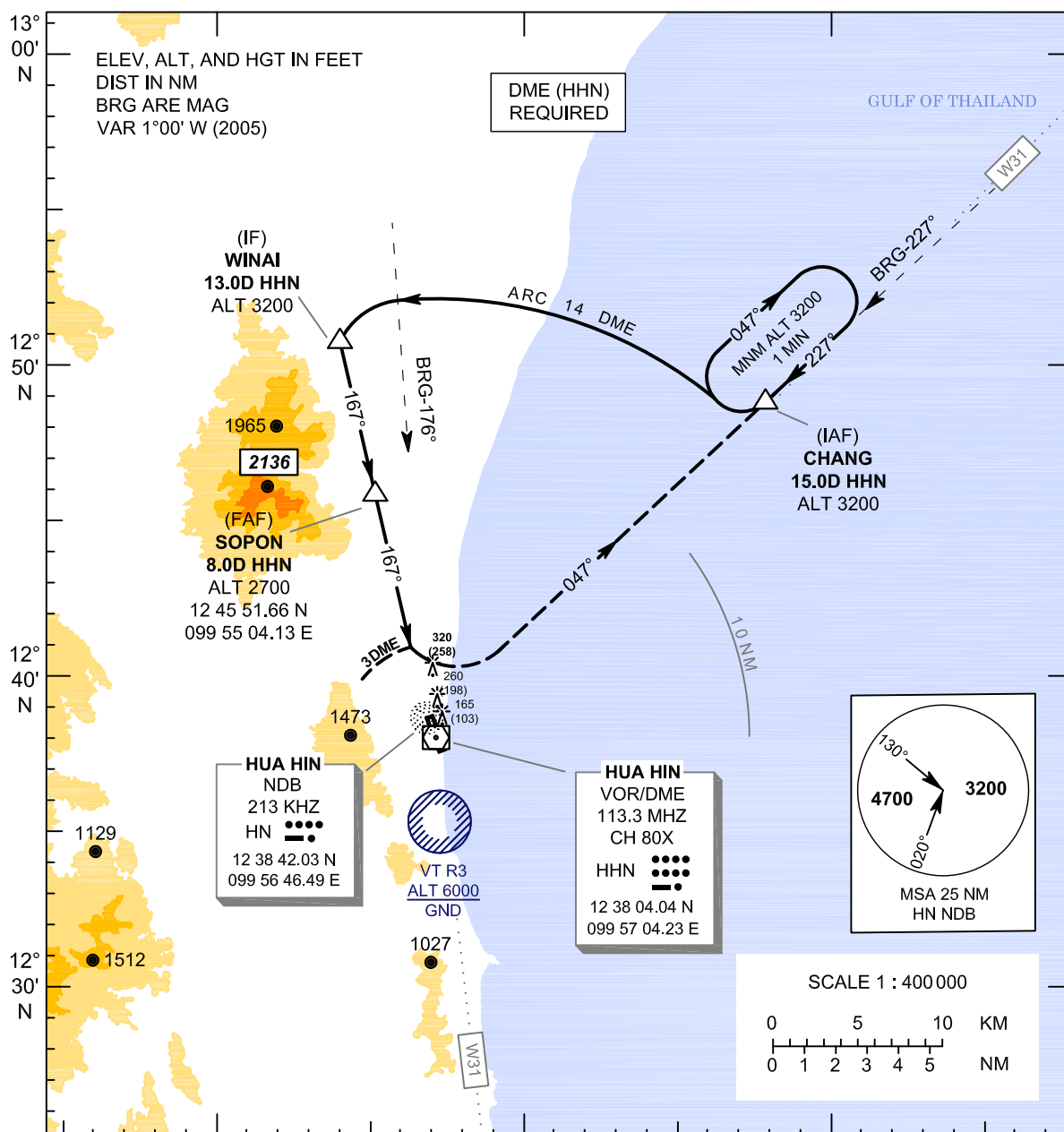
INTENTIONALLY BLANK

**INSTRUMENT
APPROACH
CHART - ICAO**

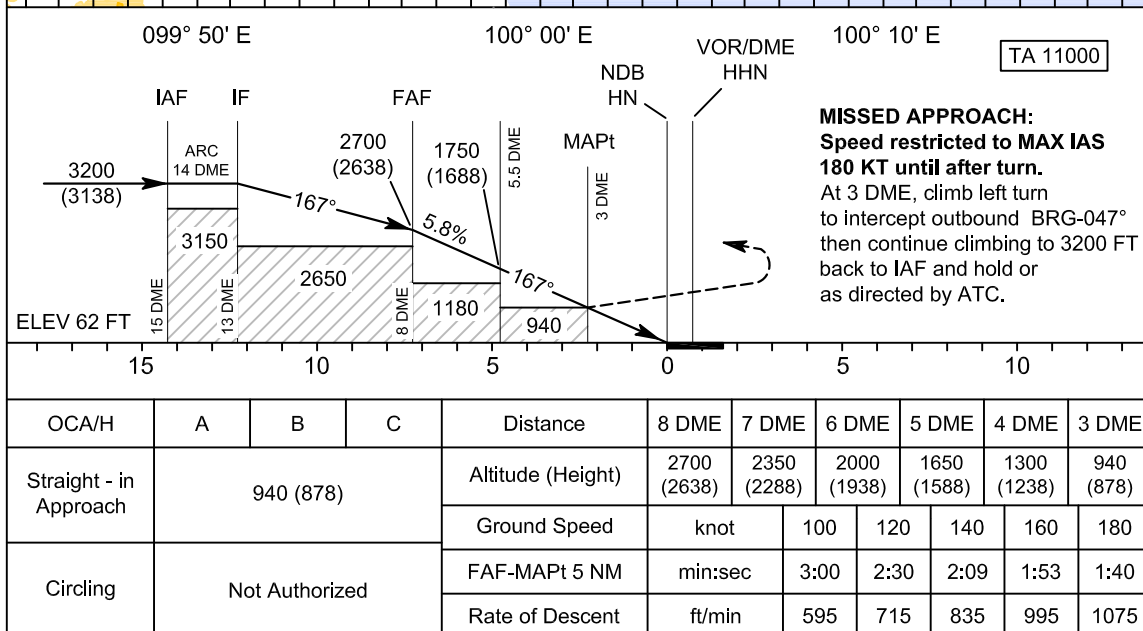
**AERODROME ELEV 62 FT
HEIGHTS RELATED TO
AERODROME ELEV**

APP : 126.2
TWR : 122.7, 236.6
GND : 121.9
ATIS : 126.8

**PRACHUAP KHIRI KHAN /
Hua Hin (VTPH)
NDB RWY16**



CHANGE: VTR3 BUFFER ZONE REMOVED. VTR3 ALT REVISED.
CONTOUR REVISED. MSA REVISED.



December 2019

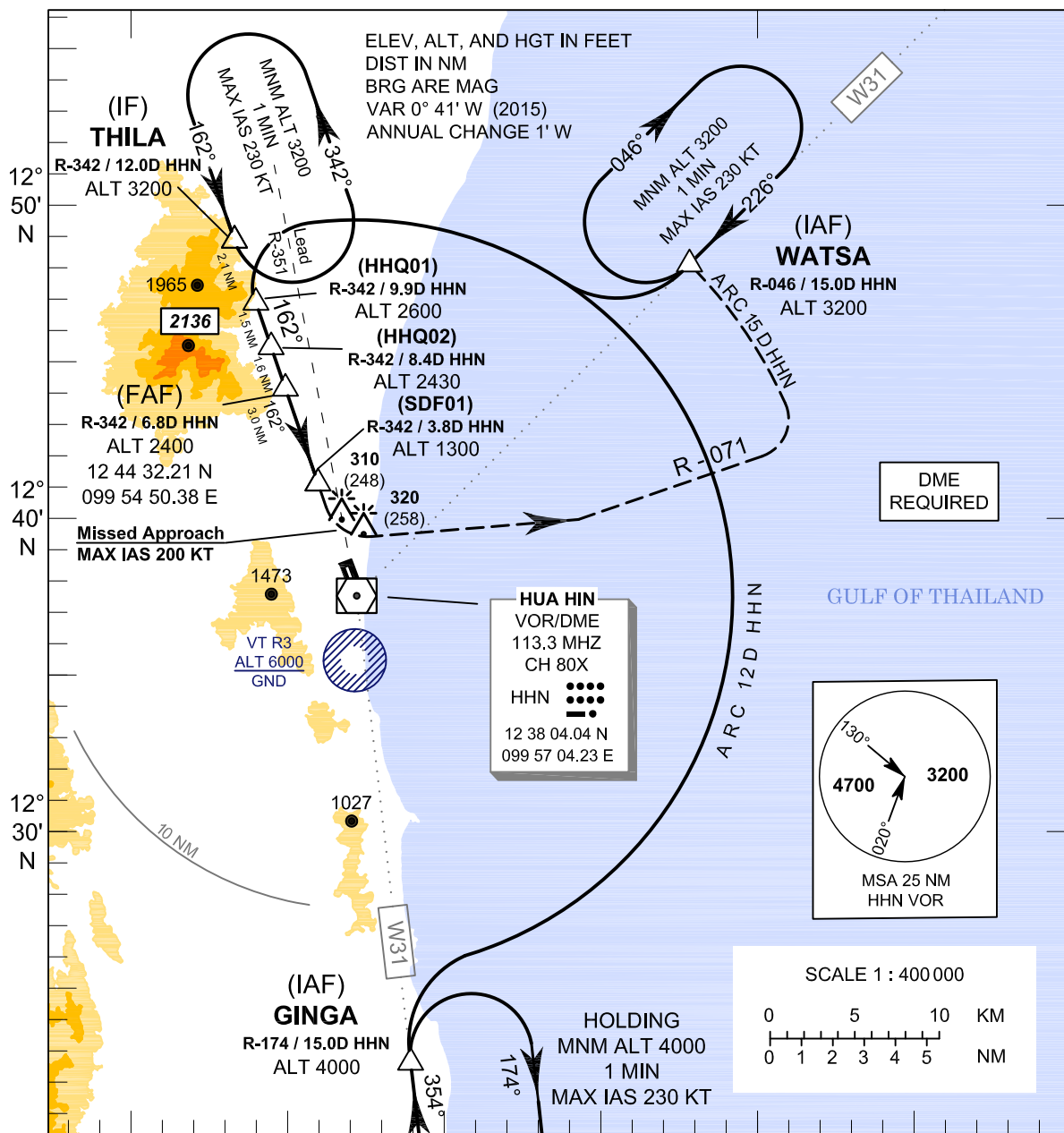
INTENTIONALLY BLANK

**INSTRUMENT
APPROACH
CHART - ICAO**

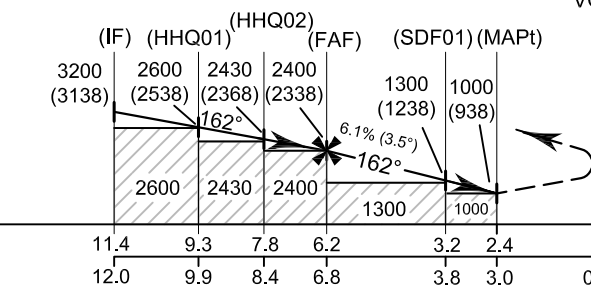
**AERODROME ELEV 62 FT
HEIGHTS RELATED TO
AERODROME ELEV**

APP : 126.2
TWR : 122.7, 236.6
GND : 121.9
ATIS : 126.8

**PRACHUAP KHIRI KHAN /
Hua Hin (VTPH)
VOR RWY16**



TA 11000



OCA/H	A	B	C	Distance (HHN)	FAF	6 D	5 D	4 D	SDF01	3.0 D	
Straight-in Approach	1000 (938)			Altitude (Height)	2400 (2338)	2115 (2053)	1740 (1678)	1370 (1308)	1300 (1238)	1000 (938)	
				Ground Speed	knot	70	90	100	120	140	160
Circling	Not Authorized			Rate of Descent	ft/min	432	556	618	741	865	988

CHANGE: VTR3 BUFFER ZONE REMOVED. VTR3 ALT REVISED. CONTOUR REVISED. MSA REVISED.

December 2019

PRACHUAP KHIRIKHAN/
Hua Hin (VTPH)
VOR RWY16

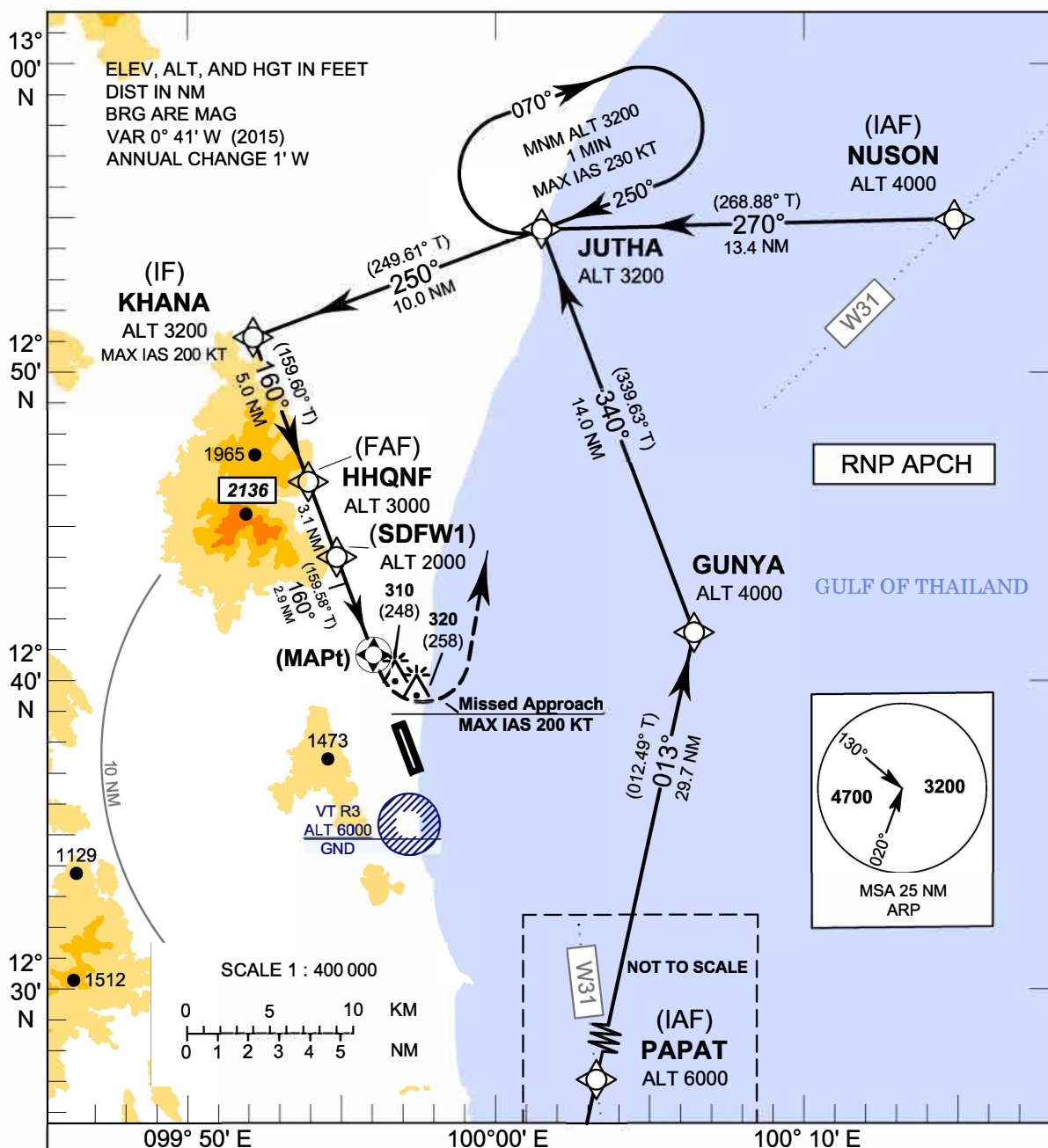
Fix / Point		Coordinates	
(IAF) GINGA	R - 174 / 15.0 D HHN	12 23 05.39 N	099 58 46.55 E
(IAF) WATSA	R - 046 / 15.0 D HHN	12 48 39.73 N	100 07 59.26 E
(IF) THILA	R - 342 / 12.0 D HHN	12 49 29.03 N	099 53 07.95 E
HHQ01	R - 342 / 9.9 D HHN	12 47 29.17 N	099 53 49.32 E
HHQ02	R - 342 / 8.4 D HHN	12 46 03.54 N	099 54 18.87 E
FAF	R - 342 / 6.8 D HHN	12 44 32.21 N	099 54 50.38 E
SDF01	R - 342 / 3.8 D HHN	12 41 40.96 N	099 55 49.45 E
MAPt	R - 342 / 3.0 D HHN	12 40 55.30 N	099 56 05.19 E
VOR	HHN	12 38 04.04 N	099 57 04.23 E

**INSTRUMENT
APPROACH
CHART - ICAO**

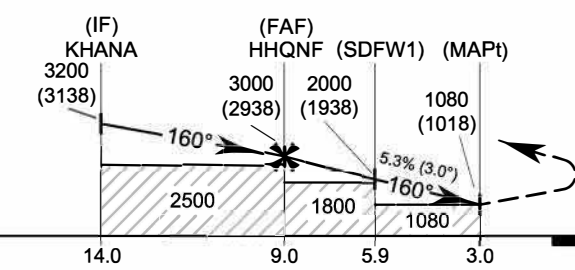
**AERODROME ELEV 62 FT
HEIGHTS RELATED TO
AERODROME ELEV**

APP	: 126.2
TWR	: 122.7, 236.6
GND	: 121.9
ATIS	: 126.8

**PRACHUAP KHIRI KHAN /
Hua Hin (VTPH)
RNP RWY16**



TA 11000



MISSED APPROACH :
No turn before MAPt.
Speed restricted to MAX IAS
200 KT until after turn.
At MAPt, turn left climb direct to
JUTHA at 3200 FT and hold or
as directed by ATC.

CHANGE : CHART TITLE:

OCA/H	A	B	C	NM to THR16	FAF	8 NM	7 NM	6 NM	5 NM	4 NM	3 NM
					Altitude (Height)	3000 (2938)	2690 (2628)	2365 (2303)	2045 (1983)	1720 (1658)	1400 (1338)
LNAV	1080 (1018)			Ground Speed	knot	70	90	100	120	140	160
	Circling			Rate of Descent	ft/min	376	483	537	644	751	859

PRACHUAP KHIRIKHAN/ Hua Hin (VTPH)

RNP RWY16

Serial Number	Path Descriptor	Waypoint Identifier	WGS-84 Coordinates		Flyover	Course ° M (° T)	Magnetic Variation	Distance (NM)	Turn Direction	Altitude (FT)	Speed (KT)	VPA/ TCH	Navigation Specification
			Latitude	Longitude									
001	IF	PAPAT (IAF)	12 13 06.29 N	099 59 54.70 E	-	013°(012.49°)	0.7°	29.7	-	6000	-	-	RNP APCH
002	TF	GUNYA	12 42 11.04 N	100 06 28.22 E	-	340°(339.63°)	0.7°	14.0	L	4000	-	-	RNP APCH
003	IF	NUSON (IAF)	12 55 38.26 N	100 15 11.32 E	-	270°(268.88°)	0.7°	13.4	-	4000	-	-	RNP APCH
004	TF	JUTHA	12 55 22.14 N	100 01 28.75 E	-	250°(249.61°)	0.7°	10.0	L	3200	-	-	RNP APCH
005	TF	KHANA (IF)	12 51 51.97 N	099 51 52.83 E	-	160°(159.60°)	0.7°	5.0	L	3200	200	-	RNP APCH
006	TF	HHQNF(FAF)	12 47 09.49 N	099 53 40.00 E	-	160°(159.58°)	0.7°	3.1	-	3000	-	-	RNP APCH
007	TF	SDFW1	12 44 14.31 N	099 54 46.43 E	-	160°(159.58°)	0.7°	2.9	-	2000	-	-	RNP APCH
008	-	MAPt (3.0 NM FM THR 16)	12 41 30.51 N	099 55 48.52 E	Y	-	0.7°	-	L	1080	200	-	RNP APCH
009	DF	JUTHA	12 55 22.14 N	100 01 28.75 E	-	-	0.7°	-	-	3200	-	-	RNP APCH
010	HM	JUTHA	12 55 22.14 N	100 01 28.75 E	Y	250°(249.61°)	0.7°	-	R	3200	-	-	RNP APCH

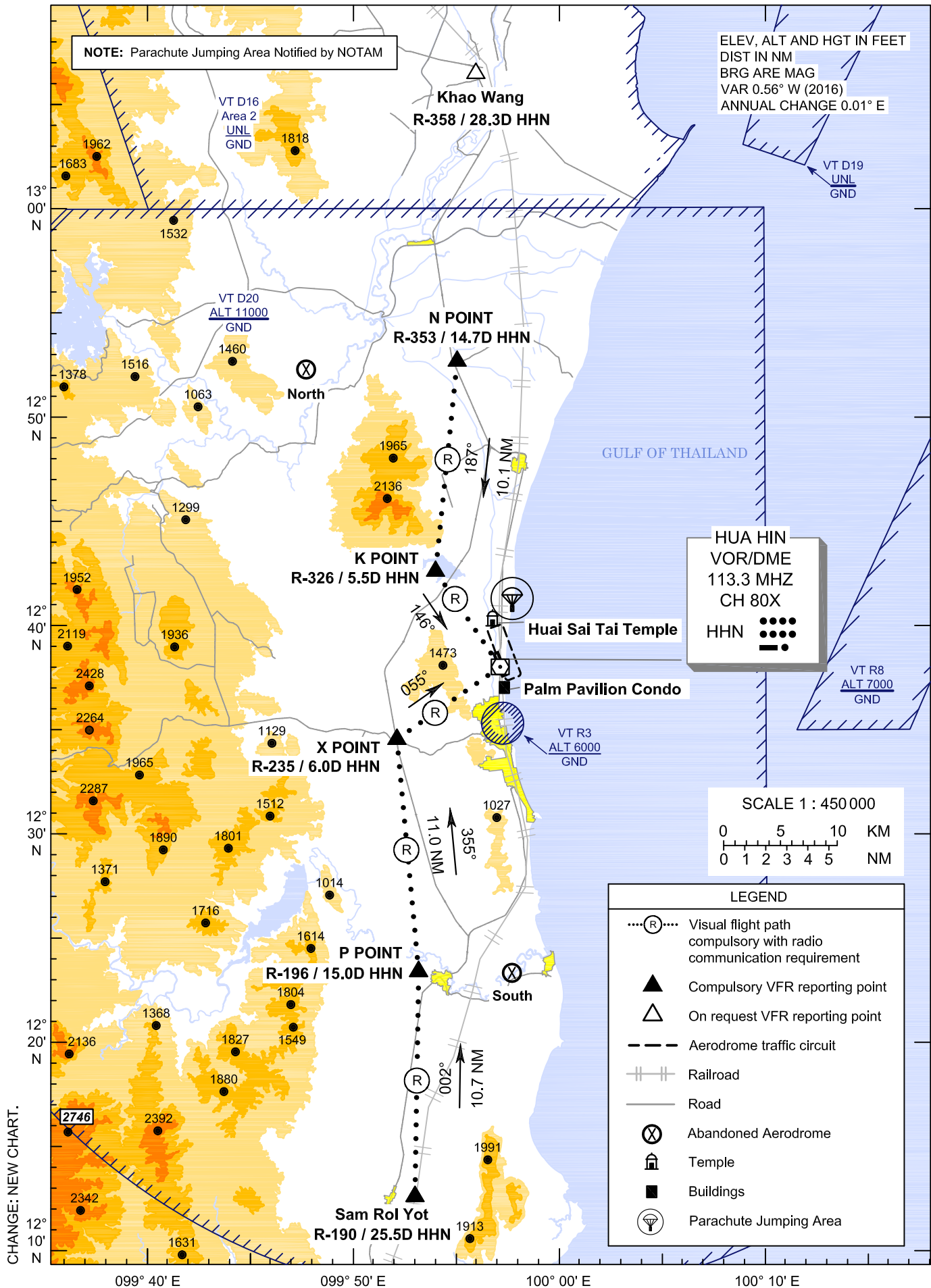
CHANGE : CHART TITLE.

**VFR ENTRY
PROCEDURE
CHART**

**AERODROME ELEV 62 FT
HEIGHTS RELATED TO
AERODROME ELEV**

APP : 126.20
TWR : 122.70, 236.60
GND : 121.90
ATIS : 126.8

**PRACHUAP KHIRI KHAN /
Hua Hin (VTPH)
RWY16/34**



**VFR ENTRY
PROCEDURE
CHART**

**AERODROME ELEV 62 FT
HEIGHTS RELATED TO
AERODROME ELEV**

**PRACHUAP KHIRI KHAN /
Hua Hin (VTPH)
RWY16/34**

ARR-RWY16/34 (From North)

Inbound via Khao Wang. Then heading 184° to N POINT, heading 187° to K POINT, then turn left heading 146° proceed to over aerodrome and join aerodrome traffic circuit when directed by ATC.

ARR-RWY16/34 (From South)

Inbound via Sam Roi Yot. Then heading 002° to P POINT, heading 355° to X POINT, then turn right heading 055° proceed to over aerodrome and join aerodrome traffic circuit when directed by ATC.

Reporting points	Landmark	Radial / DME from HHN VOR	Coordinates	
			Latitude	Longitude
"N" or NOVEMBER Point	Ban Nong Pao Tan (Road Intersection)	R-353 / 14.7D	12° 52' 42.02" N	099° 55' 01.80" E
"K" or KILO Point	Hill	R-326 / 5.5D	12° 42' 34.32" N	099° 53' 53.53" E
"P" or PAPA Point	Amphoe Pran Buri (Road Intersection)	R-196 / 15.0D	12° 23' 31.34" N	099° 53' 02.90" E
"X" or X-RAY Point	Road Intersection	R-235 / 6.0D	12° 34' 33.99" N	099° 52' 01.01" E
Khao Wang	Khao Wang Palace	R-358 / 28.3D	13° 06' 27.04" N	099° 55' 59.50" E
Sam Roi Yot	Sam Roi Yot Railway Station	R-190 / 25.5D	12° 12' 45.70" N	099° 52' 50.30" E
HUA HIN VOR/DME (HHN)	HUA HIN VOR/DME Station	-	12° 38' 04.04" N	099° 57' 04.23" E

Landmark	Radial / DME from HHN VOR	Coordinates	
		Latitude	Longitude
Parachute Jumping Area	R-011 / 3.3D	12° 41' 19.52" N	099° 57' 40.00" E
Abandoned Aerodrome (North)	R-328 / 16.9D	12° 52' 18.96" N	099° 47' 40.15" E
Huai Sai Tai Temple	R-351 / 2.1D	12° 40' 10.21" N	099° 56' 42.21" E
Palm Pavilion Condo	R-169 / 1.0D	12° 37' 04.75" N	099° 57' 16.34" E
Abandoned Aerodrome (South)	R-179 / 14.6D	12° 23' 25.95" N	099° 57' 35.30" E

NOTE: Parachute Jumping Area Notified by NOTAM

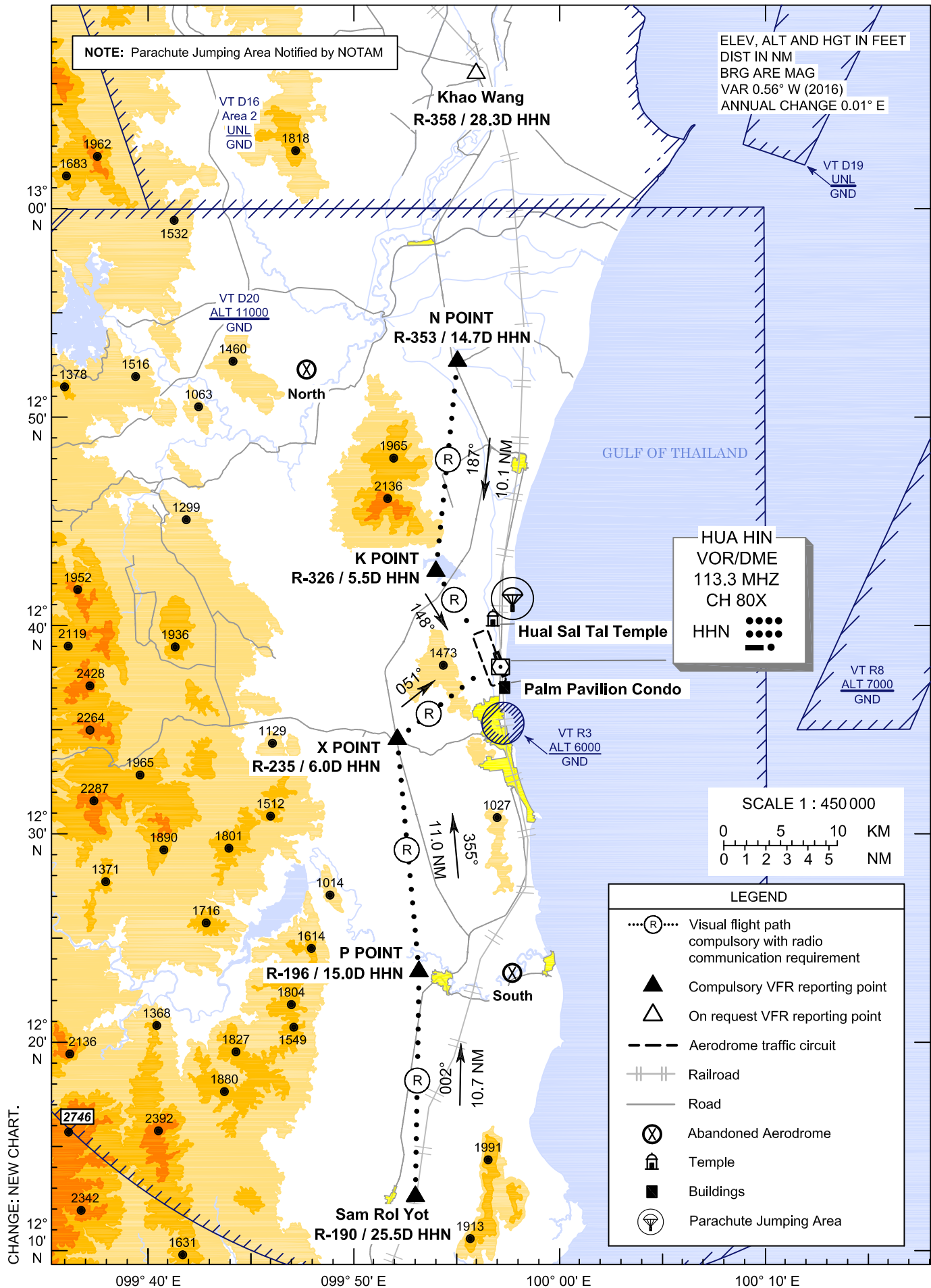
CHANGE: NEW CHART.

**VFR ENTRY
PROCEDURE
FOR HELICOPTER
CHART**

**AERODROME ELEV 62 FT
HEIGHTS RELATED TO
AERODROME ELEV**

APP : 126.20
TWR : 122.70, 236.60
GND : 121.90
ATIS : 126.8

**PRACHUAP KHIRI KHAN /
Hua Hin (VTPH)
RWY16/34**



**VFR ENTRY
PROCEDURE
FOR HELICOPTER
CHART**

AERODROME ELEV 62 FT
HEIGHTS RELATED TO
AERODROME ELEV

**PRACHUAP KHIRI KHAN /
Hua Hin (VTPH)
RWY16/34**

ARR-RWY16/34 (From North)

Inbound via Khao Wang. Then heading 184° to N POINT, heading 187° to K POINT, then turn left heading 148° to join aerodrome traffic circuit when directed by ATC.

ARR-RWY16/34 (From South)

Inbound via Sam Roi Yot. Then heading 002° to P POINT, heading 355° to X POINT, then turn right heading 051° to join aerodrome traffic circuit when directed by ATC.

Reporting points	Landmark	Radial / DME from HHN VOR	Coordinates	
			Latitude	Longitude
"N" or NOVEMBER Point	Ban Nong Pao Tan (Road Intersection)	R-353 / 14.7D	12° 52' 42.02" N	099° 55' 01.80" E
"K" or KILO Point	Hill	R-326 / 5.5D	12° 42' 34.32" N	099° 53' 53.53" E
"P" or PAPA Point	Amphoe Pran Buri (Road Intersection)	R-196 / 15.0D	12° 23' 31.34" N	099° 53' 02.90" E
"X" or X-RAY Point	Road Intersection	R-235 / 6.0D	12° 34' 33.99" N	099° 52' 01.01" E
Khao Wang	Khao Wang Palace	R-358 / 28.3D	13° 06' 27.04" N	099° 55' 59.50" E
Sam Roi Yot	Sam Roi Yot Railway Station	R-190 / 25.5D	12° 12' 45.70" N	099° 52' 50.30" E
HUA HIN VOR/DME (HHN)	HUA HIN VOR/DME Station	-	12° 38' 04.04" N	099° 57' 04.23" E

Landmark	Radial / DME from HHN VOR	Coordinates	
		Latitude	Longitude
Parachute Jumping Area	R-011 / 3.3D	12° 41' 19.52" N	099° 57' 40.00" E
Abandoned Aerodrome (North)	R-328 / 16.9D	12° 52' 18.96" N	099° 47' 40.15" E
Huai Sai Tai Temple	R-351 / 2.1D	12° 40' 10.21" N	099° 56' 42.21" E
Palm Pavilion Condo	R-169 / 1.0D	12° 37' 04.75" N	099° 57' 16.34" E
Abandoned Aerodrome (South)	R-179 / 14.6D	12° 23' 25.95" N	099° 57' 35.30" E

NOTE: Parachute Jumping Area Notified by NOTAM

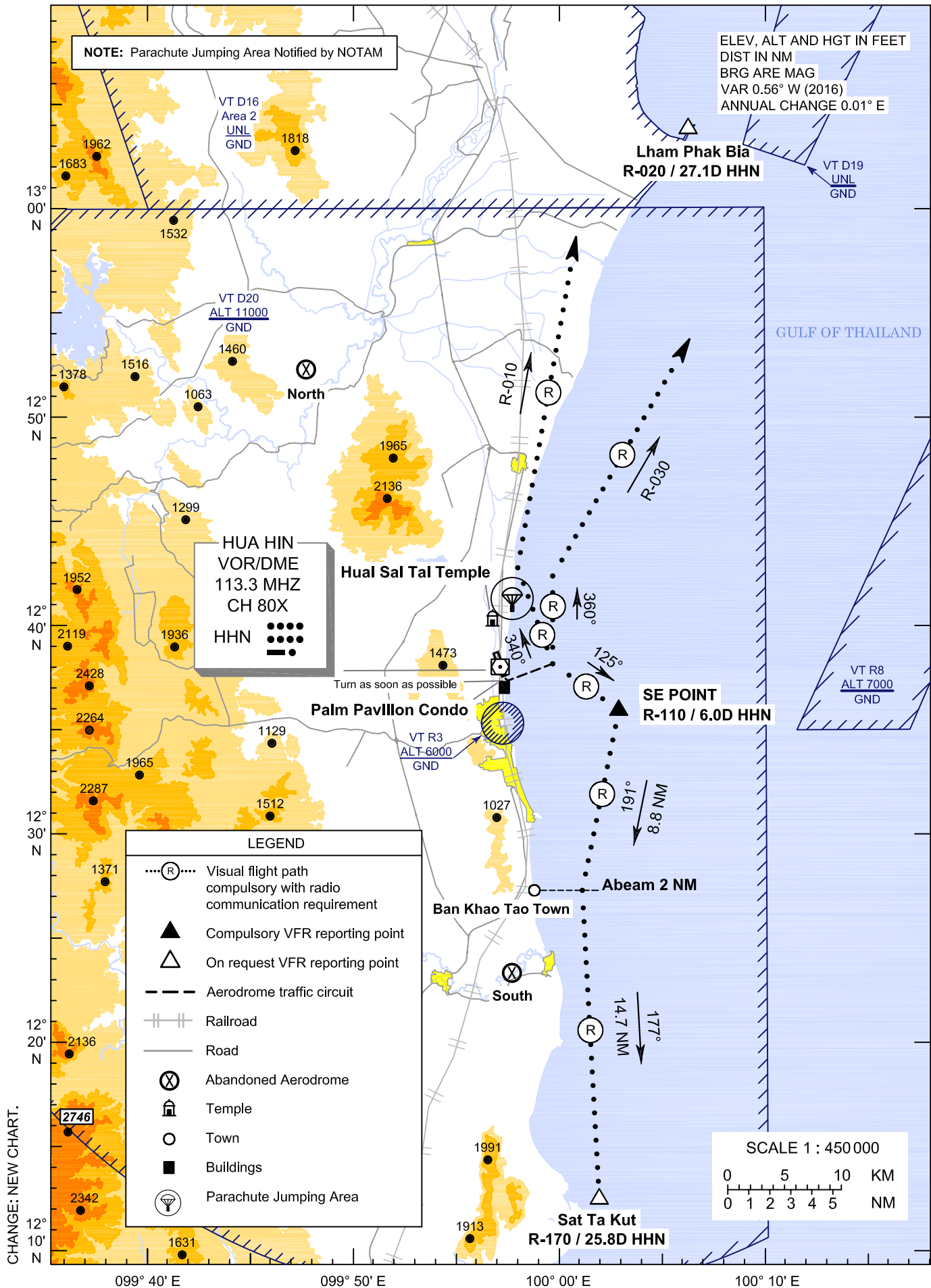
CHANGE: NEW CHART.

**VFR EXIT
PROCEDURE
CHART**

**AERODROME ELEV 62 FT
HEIGHTS RELATED TO
AERODROME ELEV**

APP : 126.20
TWR : 122.70, 236.60
GND : 121.90
ATIS : 126.8

**PRACHUAP KHIRI KHAN /
Hua Hin (VTPH)
RWY16**



**VFR EXIT
PROCEDURE
CHART**

**AERODROME ELEV 62 FT
HEIGHTS RELATED TO
AERODROME ELEV**

**PRACHUAP KHIRI KHAN /
Hua Hin (VTPH)
RWY16**

DEP-RWY16 (North)

To avoid VT R3, after departure turn left heading 070° as soon as possible until 2.5 DME for clear of traffic in circuit then turn left heading 340° to establish outbound R-010 HHN VOR.

In case of parachute jumping area active : To avoid VT R3, after departure turn left heading 070° as soon as possible until 2.5 DME for clear of traffic in circuit then turn left heading 360° to establish outbound R-030 HHN VOR.

DEP-RWY16 (South)

To avoid VT R3, after departure turn left heading 070° as soon as possible until 2.5 DME for clear of traffic in circuit then turn right heading 125° to SE POINT then turn right heading 191° to 2 NM abeam Ban Khao Tao and continue abeam shore line to Sat Ta Kut.

Reporting points	Landmark	Radial / DME from HHN VOR	Coordinates	
			Latitude	Longitude
"SE" or SOUTH EAST Point	-	R-110 / 6.0D	12° 36' 03.51" N	100° 02' 51.36" E
Lham Pak Bia	Lham Pak Bia	R-020 / 27.1D	13° 03' 46.72" N	100° 06' 19.72" E
Sat Ta Kut	Sat Ta Kut Island	R-170 / 25.8D	12° 12' 36.89" N	100° 01' 47.51" E
HUA HIN VOR/DME (HHN)	HUA HIN VOR/DME Station	-	12° 38' 04.04" N	099° 57' 04.23" E

Landmark	Radial / DME from HHN VOR	Coordinates	
		Latitude	Longitude
Parachute Jumping Area	R-011 / 3.3D	12° 41' 19.52" N	099° 57' 40.00" E
Abandoned Aerodrome (North)	R-328 / 16.9D	12° 52' 18.96" N	099° 47' 40.15" E
Huai Sai Tai Temple	R-351 / 2.1D	12° 40' 10.21" N	099° 56' 42.21" E
Palm Pavilion Condo	R-169 / 1.0D	12° 37' 04.75" N	099° 57' 16.34" E
Abandoned Aerodrome (South)	R-179 / 14.6D	12° 23' 25.95" N	099° 57' 35.30" E

NOTE: Parachute Jumping Area Notified by NOTAM

CHANGE: NEW CHART.

**VFR EXIT
PROCEDURE
CHART**

**AERODROME ELEV 62 FT
HEIGHTS RELATED TO
AERODROME ELEV**

**PRACHUAP KHIRI KHAN /
Hua Hin (VTPH)
RWY34**

DEP-RWY34 (North)

After departure turn right heading 070° until 3.0 DME for clear of traffic in circuit then turn left heading 340° to establish outbound R-010 HHN VOR.

In case of parachute jumping area active : To avoid parachute jumping area, after departure turn right heading 070° until 3.0 DME for clear of traffic in circuit then turn left heading 360° to establish outbound R-030 HHN VOR.

DEP-RWY34 (South)

To avoid parachute jumping area, after departure turn right heading 070° until 3.0 DME for clear of traffic in circuit then turn right heading 160° to establish outbound R-110 HHN VOR to SE POINT then turn right heading 191° to 2 NM abeam Ban Khao Tao and continue abeam shore line to Sat Ta Kut.

Reporting points	Landmark	Radial / DME from HHN VOR	Coordinates	
			Latitude	Longitude
"SE" or SOUTH EAST Point	-	R-110 / 6.0D	12° 36' 03.51" N	100° 02' 51.36" E
Lham Pak Bia	Lham Pak Bia	R-020 / 27.1D	13° 03' 46.72" N	100° 06' 19.72" E
Sat Ta Kut	Sat Ta Kut Island	R-170 / 25.8D	12° 12' 36.89" N	100° 01' 47.51" E
HUA HIN VOR/DME (HHN)	HUA HIN VOR/DME Station	-	12° 38' 04.04" N	099° 57' 04.23" E

Landmark	Radial / DME from HHN VOR	Coordinates	
		Latitude	Longitude
Parachute Jumping Area	R-011 / 3.3D	12° 41' 19.52" N	099° 57' 40.00" E
Abandoned Aerodrome (North)	R-328 / 16.9D	12° 52' 18.96" N	099° 47' 40.15" E
Huai Sai Tai Temple	R-351 / 2.1D	12° 40' 10.21" N	099° 56' 42.21" E
Palm Pavilion Condo	R-169 / 1.0D	12° 37' 04.75" N	099° 57' 16.34" E
Abandoned Aerodrome (South)	R-179 / 14.6D	12° 23' 25.95" N	099° 57' 35.30" E

NOTE: Parachute Jumping Area Notified by NOTAM

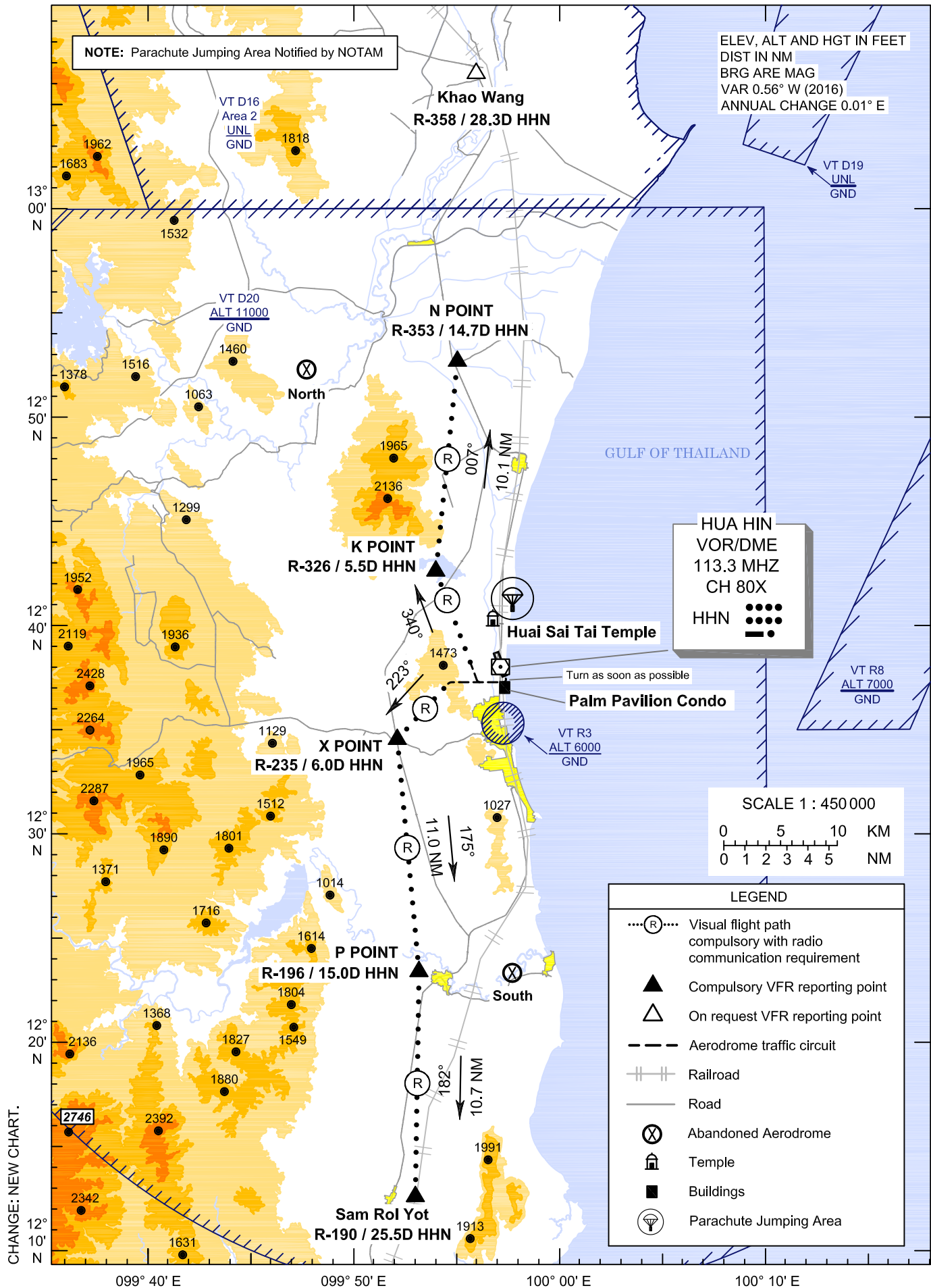
CHANGE: NEW CHART.

**VFR EXIT
PROCEDURE
FOR HELICOPTER
CHART**

**AERODROME ELEV 62 FT
HEIGHTS RELATED TO
AERODROME ELEV**

APP : 126.20
TWR : 122.70, 236.60
GND : 121.90
ATIS : 126.8

**PRACHUAP KHIRI KHAN /
Hua Hin (VTPH)
RWY16**



**VFR EXIT
PROCEDURE
FOR HELICOPTER
CHART**

**AERODROME ELEV 62 FT
HEIGHTS RELATED TO
AERODROME ELEV**

**PRACHUAP KHIRI KHAN /
Hua Hin (VTPH)
RWY16**

DEP-RWY16 (North)

To avoid VT R3, after departure turn right heading 270° as soon as possible. Then turn right to join right downwind and heading 340° to K POINT. Then turn right heading 007° to N POINT and proceed to Khao Wang.

DEP-RWY16 (South)

To avoid VT R3, after departure turn right heading 270° as soon as possible until 2.5 DME. Then turn left heading 223° to X POINT. Then turn left heading 175° to P POINT and heading 182° to Sam Roi Yot.

Reporting points	Landmark	Radial / DME from HHN VOR	Coordinates	
			Latitude	Longitude
"N" or NOVEMBER Point	Ban Nong Pao Tan (Road Intersection)	R-353 / 14.7D	12° 52' 42.02" N	099° 55' 01.80" E
"K" or KILO Point	Hill	R-326 / 5.5D	12° 42' 34.32" N	099° 53' 53.53" E
"P" or PAPA Point	Amphoe Pran Buri (Road Intersection)	R-196 / 15.0D	12° 23' 31.34" N	099° 53' 02.90" E
"X" or X-RAY Point	Road Intersection	R-235 / 6.0D	12° 34' 33.99" N	099° 52' 01.01" E
Khao Wang	Khao Wang palace	R-358 / 28.3D	13° 06' 27.04" N	099° 55' 59.50" E
Sam Roi Yot	Sam Roi Yot Railway station	R-190 / 25.5D	12° 12' 45.70" N	099° 52' 50.30" E
HUA HIN VOR/DME (HHN)	HUA HIN VOR/DME Station	-	12° 38' 04.04" N	099° 57' 04.23" E

Landmark	Radial / DME from HHN VOR	Coordinates	
		Latitude	Longitude
Parachute Jumping Area	R-011 / 3.3D	12° 41' 19.52" N	099° 57' 40.00" E
Abandoned Aerodrome (North)	R-328 / 16.9D	12° 52' 18.96" N	099° 47' 40.15" E
Huai Sai Tai Temple	R-351 / 2.1D	12° 40' 10.21" N	099° 56' 42.21" E
Palm Pavilion Condo	R-169 / 1.0D	12° 37' 04.75" N	099° 57' 16.34" E
Abandoned Aerodrome (South)	R-179 / 14.6D	12° 23' 25.95" N	099° 57' 35.30" E

NOTE: Parachute Jumping Area Notified by NOTAM

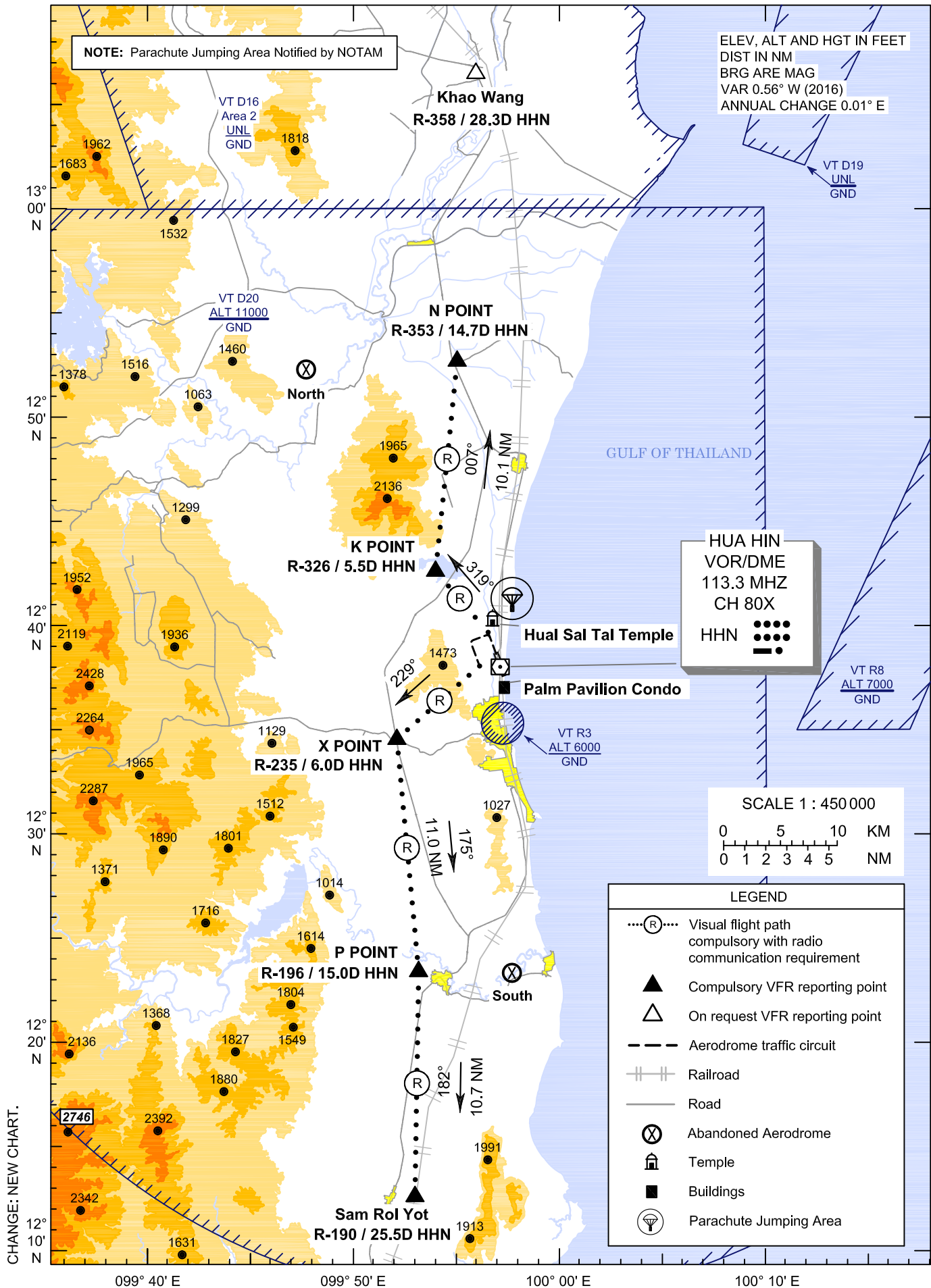
CHANGE: NEW CHART.

**VFR EXIT
PROCEDURE
FOR HELICOPTER
CHART**

**AERODROME ELEV 62 FT
HEIGHTS RELATED TO
AERODROME ELEV**

APP : 126.20
TWR : 122.70, 236.60
GND : 121.90
ATIS : 126.8

**PRACHUAP KHIRI KHAN /
Hua Hin (VTPH)
RWY34**



**VFR EXIT
PROCEDURE
FOR HELICOPTER
CHART**

AERODROME ELEV 62 FT
HEIGHTS RELATED TO
AERODROME ELEV

**PRACHUAP KHIRI KHAN /
Hua Hin (VTPH)
RWY34**

DEP-RWY34 (North)

After departure turn left heading 319° to K POINT. Then turn right heading 007° to N POINT and proceed to Khao Wang.

DEP-RWY34 (South)

After departure turn left to join left downwind. Continue on left downwind until mid of runway. Then turn right heading 229 ° to X POINT. Then turn left heading 175° to P POINT and heading 182° to Sam Roi Yot.

Reporting points	Landmark	Radial / DME from HHN VOR	Coordinates	
			Latitude	Longitude
"N" or NOVEMBER Point	Ban Nong Pao Tan (Road Intersection)	R-353 / 14.7D	12° 52' 42.02" N	099° 55' 01.80" E
"K" or KILO Point	Hill	R-326 / 5.5D	12° 42' 34.32" N	099° 53' 53.53" E
"P" or PAPA Point	Amphoe Pran Buri (Road Intersection)	R-196 / 15.0D	12° 23' 31.34" N	099° 53' 02.90" E
"X" or X-RAY Point	Road Intersection	R-235 / 6.0D	12° 34' 33.99" N	099° 52' 01.01" E
Khao Wang	Khao Wang Palace	R-358 / 28.3D	13° 06' 27.04" N	099° 55' 59.50" E
Sam Roi Yot	Sam Roi Yot Railway Station	R-190 / 25.5D	12° 12' 45.70" N	099° 52' 50.30" E
HUA HIN VOR/DME (HHN)	HUA HIN VOR/DME Station	-	12° 38' 04.04" N	099° 57' 04.23" E

Landmark	Radial / DME from HHN VOR	Coordinates	
		Latitude	Longitude
Parachute Jumping Area	R-011 / 3.3D	12° 41' 19.52" N	099° 57' 40.00" E
Abandoned Aerodrome (North)	R-328 / 16.9D	12° 52' 18.96" N	099° 47' 40.15" E
Huai Sai Tai Temple	R-351 / 2.1D	12° 40' 10.21" N	099° 56' 42.21" E
Palm Pavilion Condo	R-169 / 1.0D	12° 37' 04.75" N	099° 57' 16.34" E
Abandoned Aerodrome (South)	R-179 / 14.6D	12° 23' 25.95" N	099° 57' 35.30" E

NOTE: Parachute Jumping Area Notified by NOTAM

CHANGE: NEW CHART.