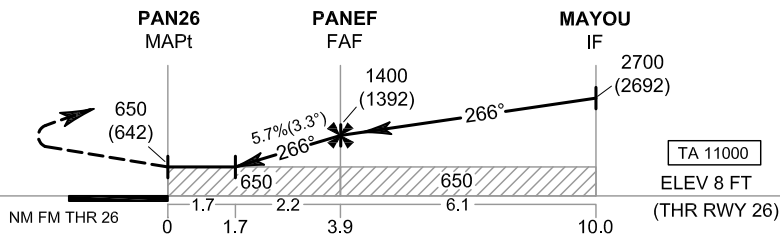


MISSED APPROACH :

No turn before MAPt.

Climb on track 266° to 2000 FT,
then turn right direct to DATOE
at 3500 FT and hold or
as directed by ATC.



OCA/H	A	B	NM to NEXT WPT	1.7 NM	2 NM	3 NM	FAF			
LNAV	650 (642)		Altitude (Height)	650 (642)	750 (742)	1095 (1087)	1400 (1392)			
			Ground speed	knot	70	90	100	120	140	160
Circling (OCH AAL)	1900 (1892)		Rate of descent FAF-MAPt (5.7%)	(ft/min)	404	519	577	693	808	924