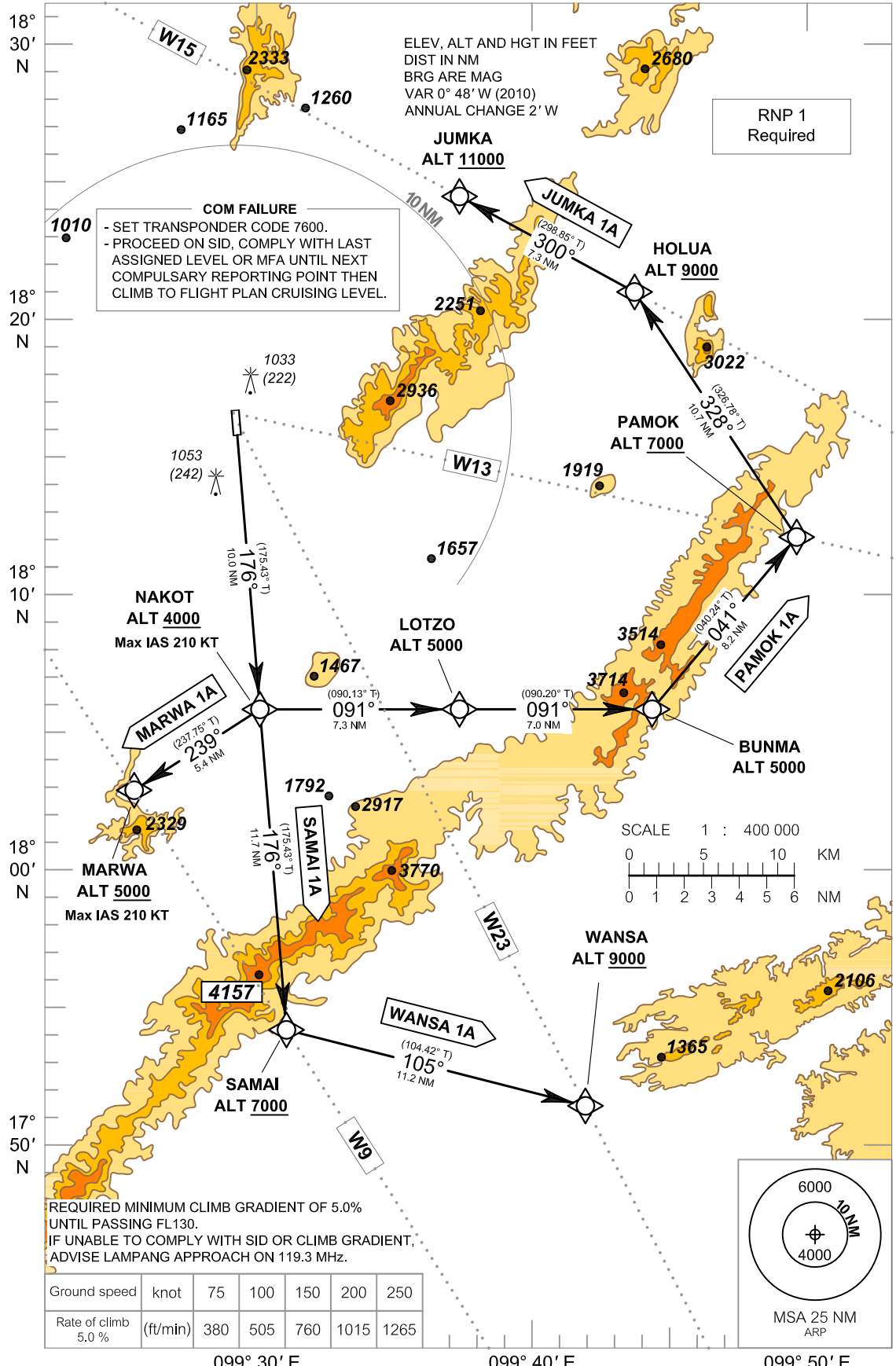


STANDARD DEPARTURE CHART - INSTRUMENT (SID) - ICAO

APP : 119.3
TWR : 122.3 , 236.6

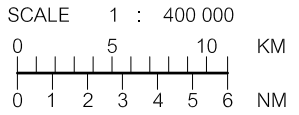
**LAMPANG (VTCL)
RNAV RWY18**
**JUMKA 1A MARWA 1A
PAMOK 1A SAMAI 1A WANSA 1A**



COM FAILURE
- SET TRANSPONDER CODE 7600.
- PROCEED ON SID, COMPLY WITH LAST ASSIGNED LEVEL OR MFA UNTIL NEXT COMPULSARY REPORTING POINT THEN CLIMB TO FLIGHT PLAN CRUISING LEVEL.

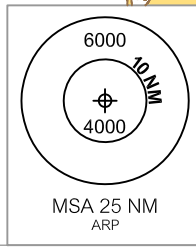
ELEV, ALT AND HGT IN FEET
DIST IN NM
BRG ARE MAG
VAR 0° 48' W (2010)
ANNUAL CHANGE 2' W

RNP 1
Required



REQUIRED MINIMUM CLIMB GRADIENT OF 5.0% UNTIL PASSING FL130.
IF UNABLE TO COMPLY WITH SID OR CLIMB GRADIENT, ADVISE LAMPANG APPROACH ON 119.3 MHZ.

| | | | | | | |
|------------------------|----------|-----|-----|-----|------|------|
| Ground speed | knot | 75 | 100 | 150 | 200 | 250 |
| Rate of climb 5.0 % | (ft/min) | 380 | 505 | 760 | 1015 | 1265 |



099° 30' E 099° 40' E 099° 50' E