

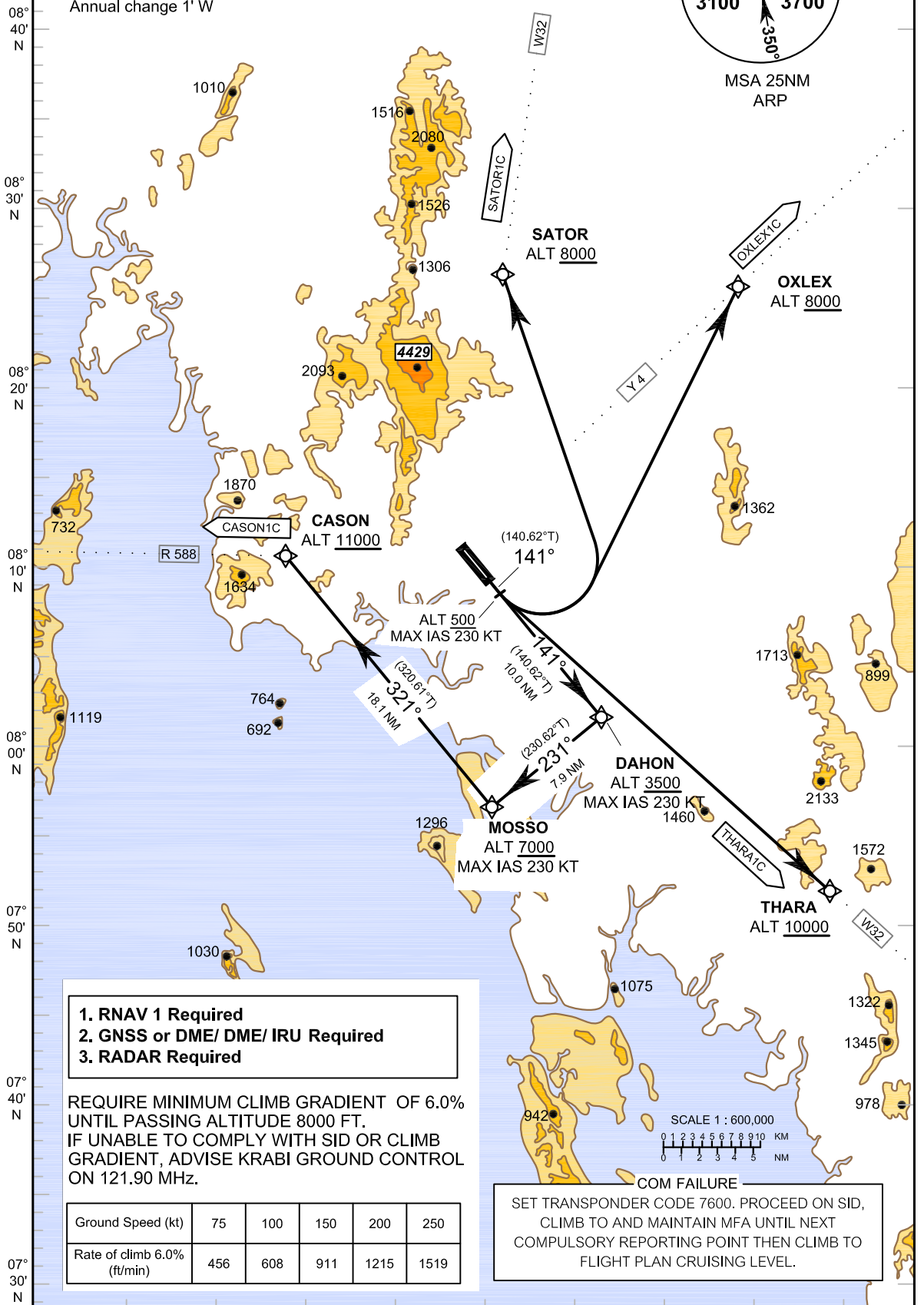
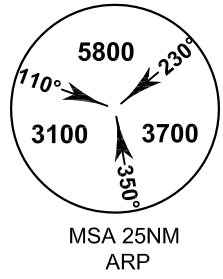
**STANDARD DEPARTURE CHART - INSTRUMENT (SID) - ICAO**

APP : 120.05  
 TWR : 122.5, 236.60  
 GND : 121.90  
 ATIS : 132.40

**KRABI /Krabi (VTSG)  
 RNAV RWY 14  
 CASON1C OXLEX1C  
 SATOR1C THARA1C**

ELEV, ALT, AND HGT IN FEET  
 DIST IN NM  
 BRG ARE MAG  
 VAR 0° 32' W (2010)  
 Annual change 1' W

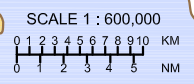
TRANSITION ALTITUDE  
 11000



- 1. RNAV 1 Required
- 2. GNSS or DME/ DME/ IRU Required
- 3. RADAR Required

REQUIRE MINIMUM CLIMB GRADIENT OF 6.0% UNTIL PASSING ALTITUDE 8000 FT. IF UNABLE TO COMPLY WITH SID OR CLIMB GRADIENT, ADVISE KRABI GROUND CONTROL ON 121.90 MHz.

Ground Speed (kt)	75	100	150	200	250
Rate of climb 6.0% (ft/min)	456	608	911	1215	1519



**COM FAILURE**  
 SET TRANSPONDER CODE 7600. PROCEED ON SID, CLIMB TO AND MAINTAIN MFA UNTIL NEXT COMPULSORY REPORTING POINT THEN CLIMB TO FLIGHT PLAN CRUISING LEVEL.