

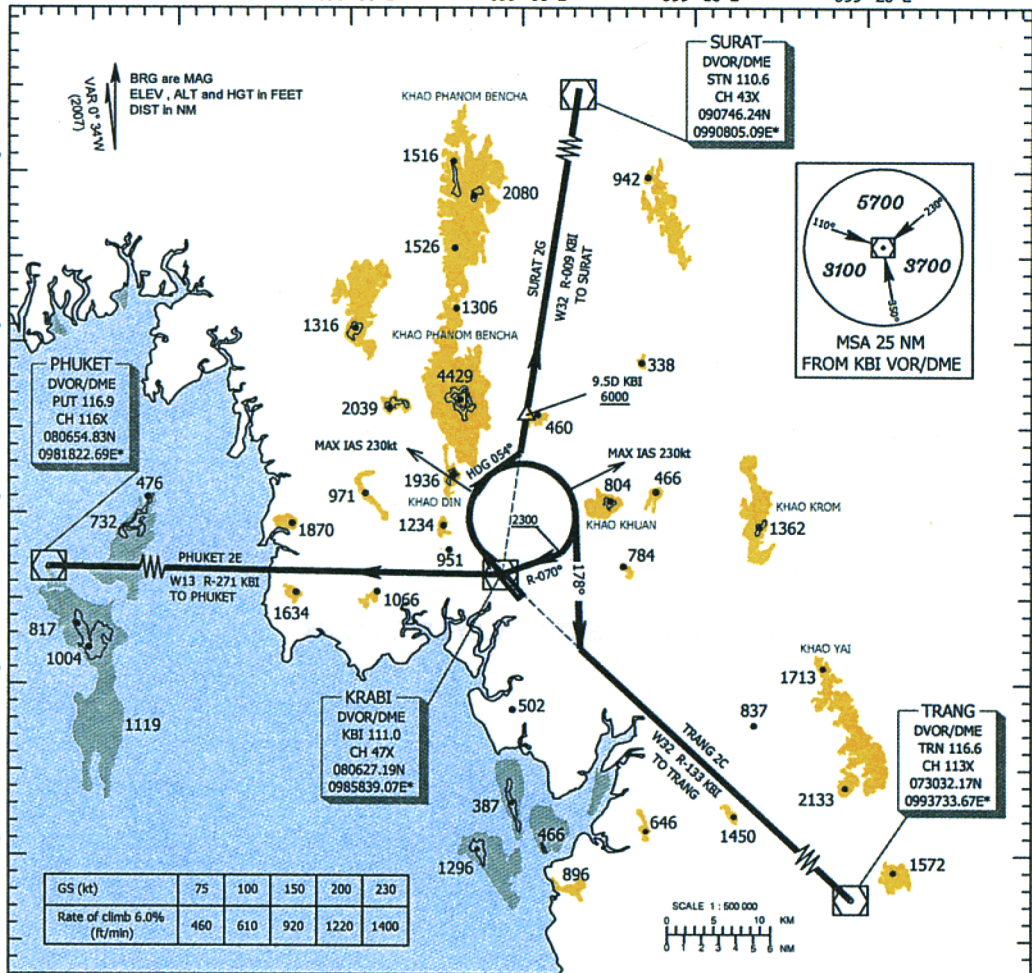
STANDARD INSTRUMENT DEPARTURE (SID)
CHART - ICAO

KRABI / Krabi (VTG)
RWY32

TRANSITION ALTITUDE 11 000 R
APP : 120.05
TWR : 118.8, 236.6

SURAT 2G DEPARTURE
TRANG 2C DEPARTURE
PHUKET 2E DEPARTURE

098° 40' E 098° 50' E 099° 00' E 099° 10' E 099° 20' E



COMMUNICATION FAILURE PROCEDURE

- Squawk A7600
- Comply with last assigned level until next reporting point then climb to flight plan cruising level.

WARNING

- No turn before Departure End of Runway
- Min Procedure Design Gradient = 6.0 %
- Max IAS 230kt for turning after departure

SURAT TWO GOLF :
(SURAT 2G)

Climb on runway heading until 800ft, then continue climbing turn right heading 054° to intercept and proceed along KBI R-009 outbound and maintain 6000ft or above at 9.5D KBI to SURAT DVOR/DME

TRANG TWO CHALIE :
(TRANG 2C)

Climb on runway heading until 800ft, then continue climbing turn right heading 178° to intercept and proceed along KBI R-133 to TRANG DVOR/DME

PHUKET TWO ECHO :
(PHUKET 2E)

Climb on runway heading until 800ft, then continue climbing turn right to intercept KBI R-070 at 2300ft or above to KBI and proceed along KBI R-271 outbound to PHUKET DVOR/DME