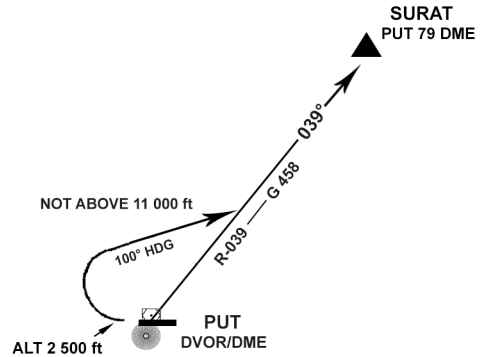


STANDARD INSTRUMENT DEPARTURE RUNWAY 27

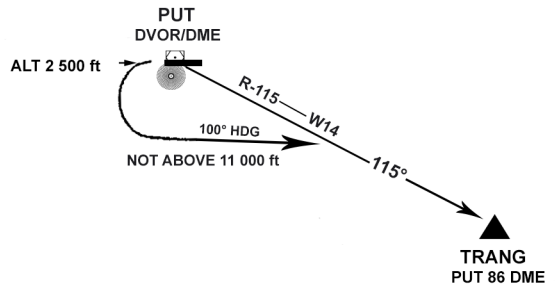
SURAT ONE BRAVO (STN 1 B)

Take off, climb runway heading until 2 500 ft or above. Then turn right heading 070° to intercept and proceed on PUT R-039 not above 11 000 ft. Expect radar control. Contact Phuket Approach on 124.7, 284.0 MHz after take-off.



TRANG ONE BRAVO (TRN 1 B)

Take off, climb runway heading until 2 500 ft or above. Then turn left heading 100° to intercept and proceed on PUT R-115 not above 11 000 ft. Expect radar control. Contact Phuket Approach on 124.7, 284.0 MHz after take-off.



UTHAI ONE BRAVO (UTHAI 1 B)

Take off, climb runway heading until 2 500 ft or above. Then turn left heading 100° to intercept and proceed on PUT R-134 not above 11 000 ft. Expect radar control. Contact Phuket Approach on 124.7, 284.0 Mhz after take off.

