

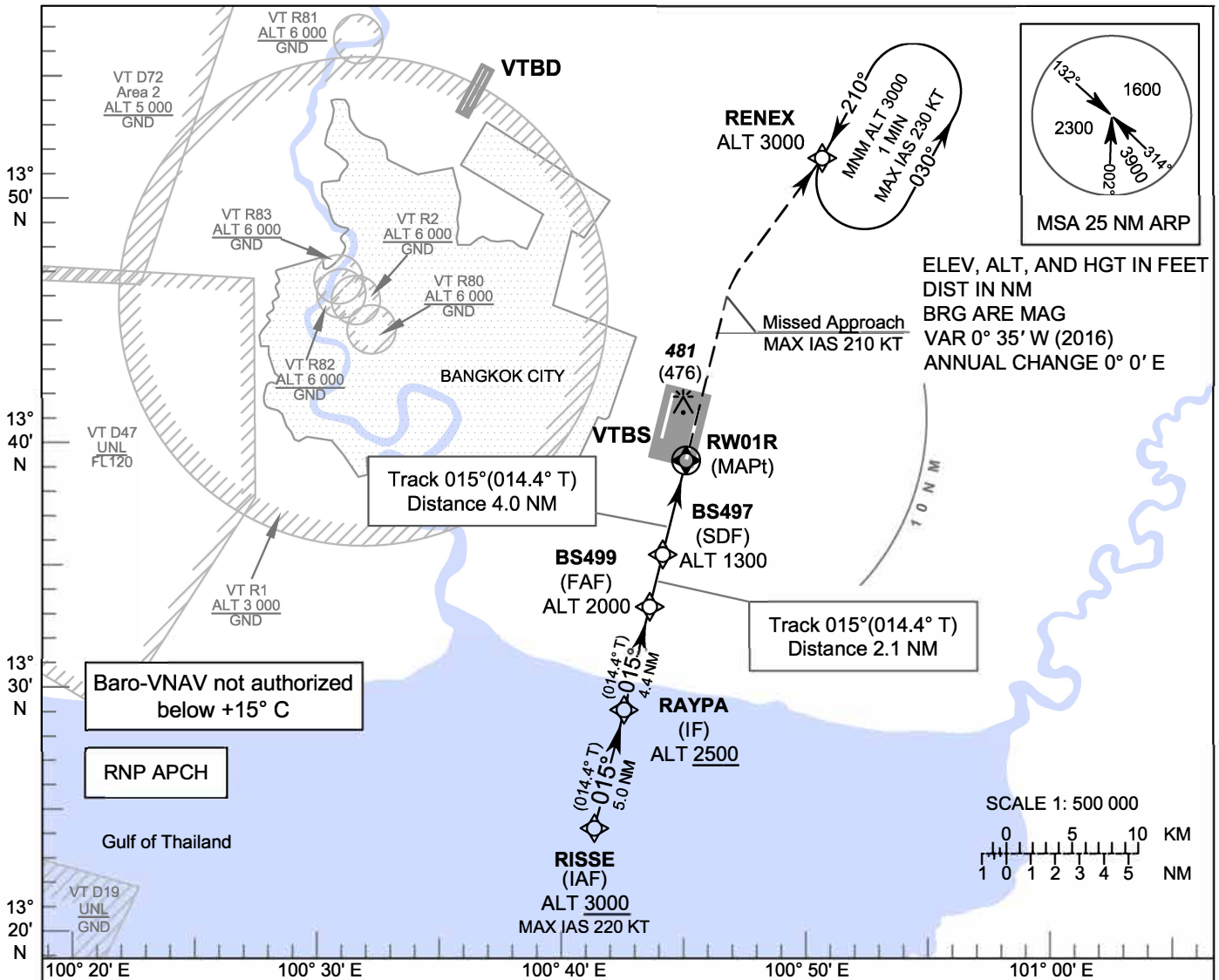
**INSTRUMENT  
APPROACH  
CHART - ICAO**

**AERODROME ELEV 5 FT  
HEIGHTS RELATED TO  
THR RWY01R - ELEV 5 FT**

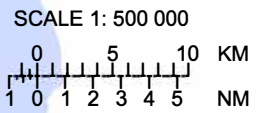
APP	: 119.1, 262.5
	: 120.3, 262.5
	: 133.4, 262.5
	: 122.35, 262.5
	: 124.35, 262.5
	: 125.2, 262.5
ARR	: 121.1
	: 126.3
TWR	: 118.2, 274.5
	: 119.0
ARR ATIS	: 133.6, 278.6

**BANGKOK / Suvarnabhumi Intl (VTBS)**

**RNP RWY01R**

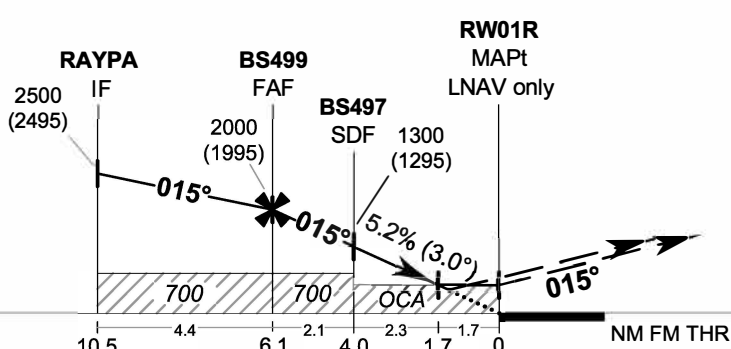


ELEV, ALT, AND HGT IN FEET  
DIST IN NM  
BRG ARE MAG  
VAR 0° 35' W (2016)  
ANNUAL CHANGE 0° 0' E



Baro-VNAV not authorized  
below +15° C

RNP APCH



**MISSED APPROACH:**  
No turn before MAPt.  
Speed restricted to  
**MAX IAS 210 KT** until after turn.  
Climb to 1500 FT on track 015°,  
then climbing right turn direct to  
RENEX at 3000 FT and hold or as  
directed by ATC.  
(If unable to reach 3000 FT  
at RENEX, continue climb  
in the holding pattern.)

RDH 50 FT  
TA 11000  
ELEV 5 FT  
(THR RWY01R)

OCA/H	A	B	C	D	NM to NEXT WPT	FAF	6 NM	5 NM	4 NM	3 NM	2 NM	1.7 NM
LNAV / VNAV	540 (535)				Altitude (Height)	2000 (1995)	1950 (1945)	1635 (1630)	1320 (1315)	1005 (1000)	690 (685)	600 (595)
LNAV	600 (595)				Ground speed	knot	70	90	100	120	140	160
Circling (OCH AAL)	800 (795)		900 (895)		Rate of descent FAF-MAPt 5.2%	ft/min	369	474	527	632	737	843

CHANGE APP FREQUENCY.