

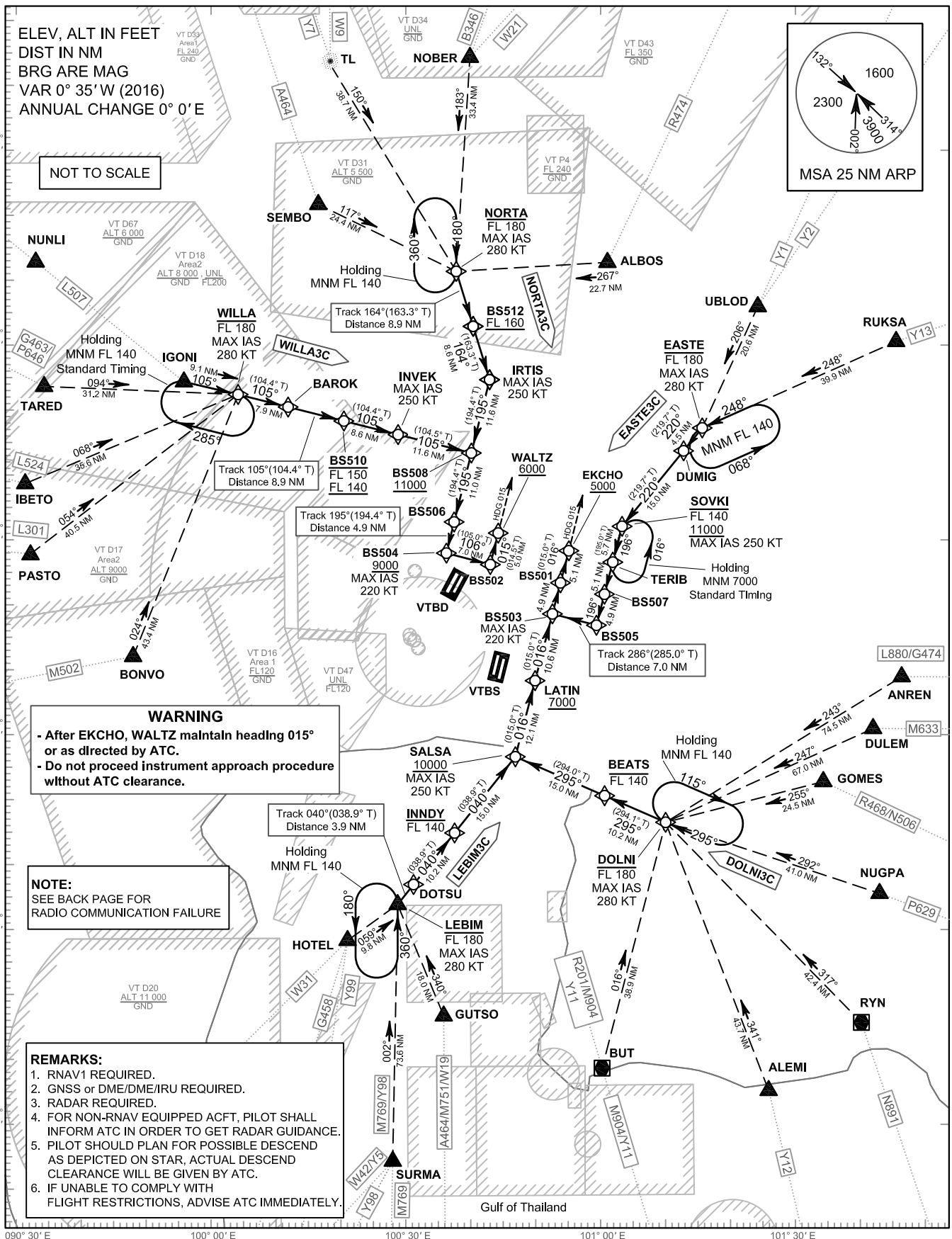
**STANDARD ARRIVAL CHART-  
INSTRUMENT (STAR) - ICAO**

TRANSITION ALTITUDE 11000 FT
<b>SPEED RESTRICTION</b> MAX IAS 250 KT AT OR BELOW ALT 10000 FT UNLESS OTHERWISE AUTHORIZED BY ATC.

APP	: 119.1, 262.5
	: 120.3, 262.5
	: 133.4, 262.5
	: 122.35, 262.5
	: 124.35, 262.5
	: 125.2, 262.5
ARR	: 121.1
	: 126.3
TWR	: 118.2, 274.5
	: 119.0
ARR ATIS	: 133.6, 278.6

**BANGKOK/Suvarnabhumi Intl (VTBS)  
RNAV RWY19L/19R**

DOLNI3C EASTE3C  
LEBIM3C NORTA3C WILLA3C



CHANGE: APP FREQUENCY.