

STANDARD DEPARTURE CHART - INSTRUMENT (SID) - ICAO

TRANSITION ALTITUDE 11000 FT
SPEED RESTRICTION MAX IAS 250 KT AT OR BELOW ALT 10000 FT UNLESS OTHERWISE AUTHORIZED BY ATC.

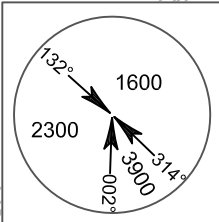
APP	: 119.1, 262.5
	: 120.3, 262.5
	: 133.4, 262.5
	: 122.35, 262.5
	: 124.35, 262.5
	: 125.2, 262.5
ARR	: 121.1
	: 126.3
TWR	: 118.2, 274.5
	: 119.0
DEP ATIS	: 127.65

**BANGKOK/Suvarnabhumi Intl (VTBS)
RNAV RWY19L**

DOSBU3J GORSI3J HHN3J
KASNI3J KIGOB3J REGOS3J
RYN3J SABIS3J UKERA3J

ELEV, ALT IN FEET
DIST IN NM
BRG ARE MAG
VAR 0° 35' W (2016)
ANNUAL CHANGE 0° 0' E

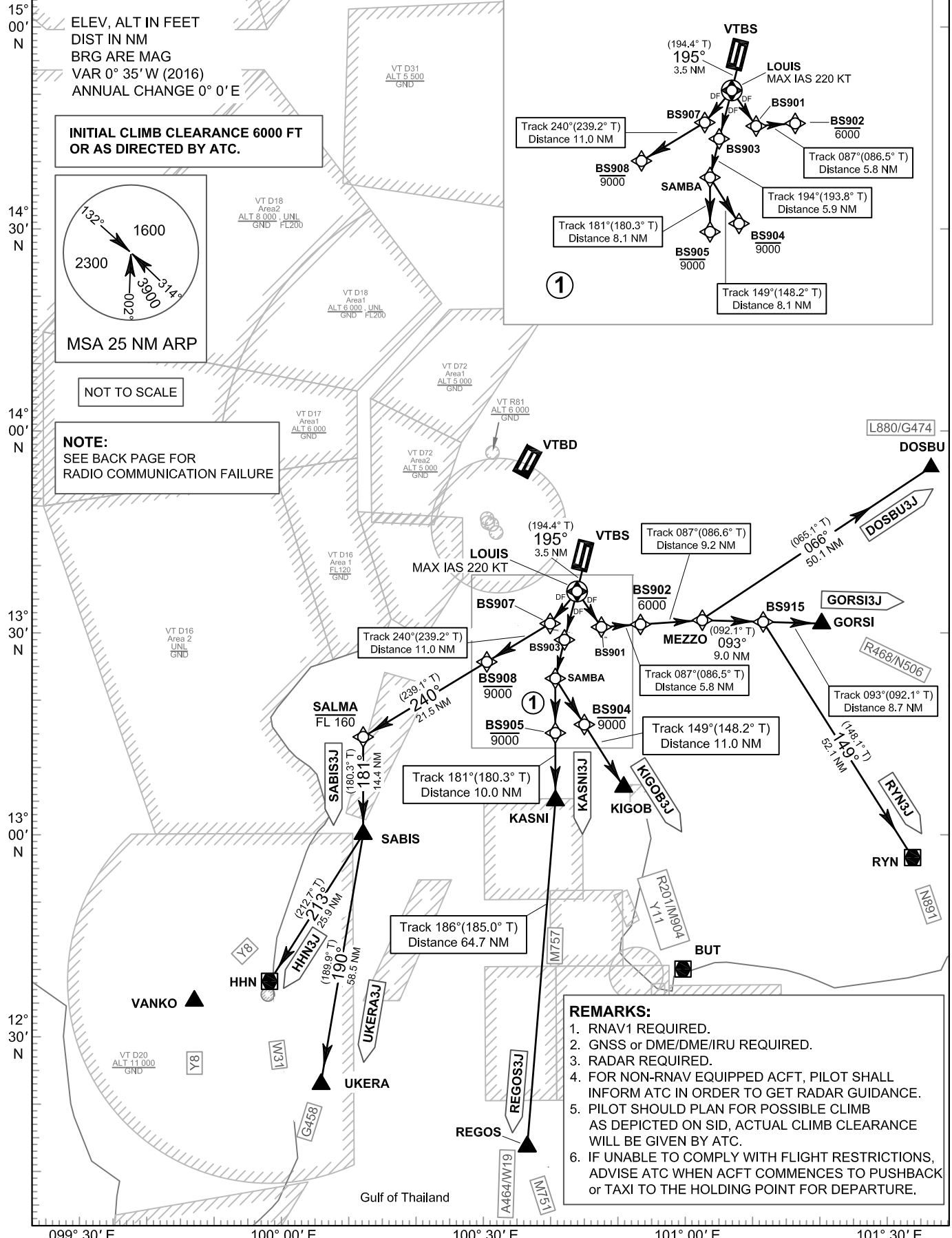
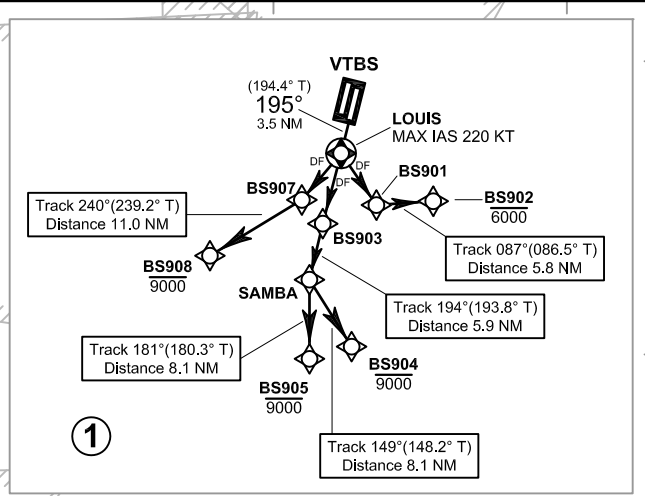
**INITIAL CLIMB CLEARANCE 6000 FT
OR AS DIRECTED BY ATC.**



MSA 25 NM ARP

NOT TO SCALE

NOTE:
SEE BACK PAGE FOR
RADIO COMMUNICATION FAILURE



- REMARKS:**
1. RNAV1 REQUIRED.
 2. GNSS or DME/DME/IRU REQUIRED.
 3. RADAR REQUIRED.
 4. FOR NON-RNAV EQUIPPED ACFT, PILOT SHALL INFORM ATC IN ORDER TO GET RADAR GUIDANCE.
 5. PILOT SHOULD PLAN FOR POSSIBLE CLIMB AS DEPICTED ON SID, ACTUAL CLIMB CLEARANCE WILL BE GIVEN BY ATC.
 6. IF UNABLE TO COMPLY WITH FLIGHT RESTRICTIONS, ADVISE ATC WHEN ACFT COMMENCES TO PUSHBACK OR TAXI TO THE HOLDING POINT FOR DEPARTURE.

CHANGE: APP FREQUENCY.