

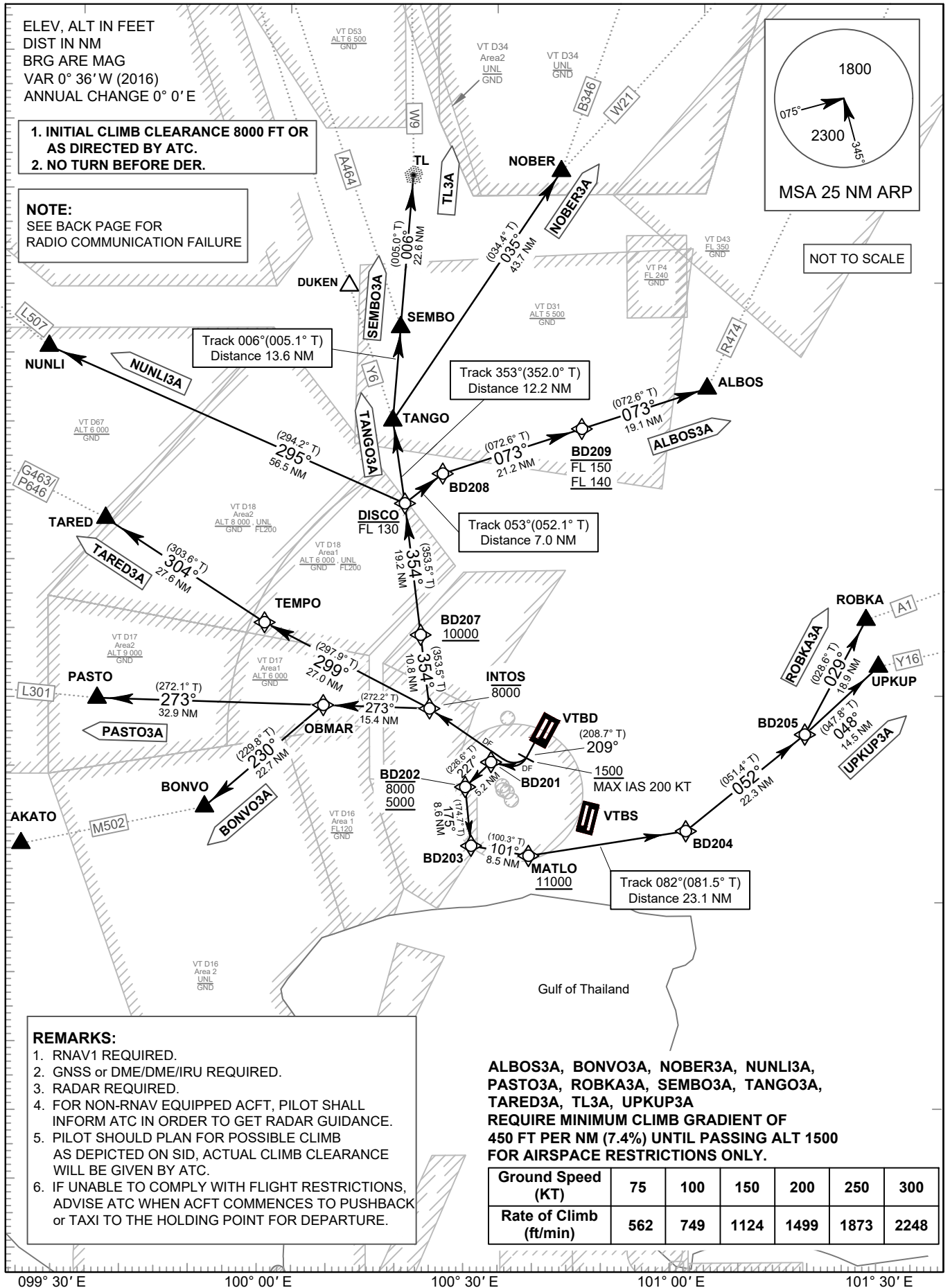
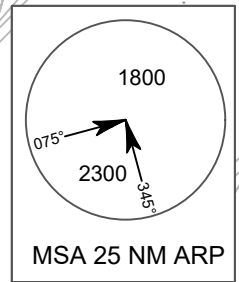
**STANDARD DEPARTURE CHART-  
INSTRUMENT (SID) - ICAO**

TRANSITION ALTITUDE 11000 FT
<b>SPEED RESTRICTION</b> MAX IAS 250 KT AT OR BELOW ALT 10000 FT UNLESS OTHERWISE AUTHORIZED BY ATC.

APP	: 119.1, 262.5
	: 119.4, 262.5
	: 120.3, 262.5
	: 133.4, 262.5
	: 122.35, 262.5
	: 124.35, 262.5
	: 125.2, 262.5
DAR	: 133.0, 262.5
TWR	: 118.1, 236.6
DEP ATIS	: 118.55

**BANGKOK/Don Mueang Intl (VTBD)  
RNAV RWY21R**

ALBOS3A BONVO3A  
NOBER3A NUNLI3A PASTO3A  
ROBKA3A SEMBO3A TANGO3A  
TARED3A TL3A UPKUP3A



**1. INITIAL CLIMB CLEARANCE 8000 FT OR  
AS DIRECTED BY ATC.  
2. NO TURN BEFORE DER.**

**NOTE:**  
SEE BACK PAGE FOR  
RADIO COMMUNICATION FAILURE

Track 006°(005.1° T)  
Distance 13.6 NM

Track 353°(352.0° T)  
Distance 12.2 NM

Track 053°(052.1° T)  
Distance 7.0 NM

Track 073°(072.6° T)  
Distance 19.1 NM

Track 082°(081.5° T)  
Distance 23.1 NM

**REMARKS:**

1. RNAV1 REQUIRED.
2. GNSS or DME/DME/IRU REQUIRED.
3. RADAR REQUIRED.
4. FOR NON-RNAV EQUIPPED ACFT, PILOT SHALL INFORM ATC IN ORDER TO GET RADAR GUIDANCE.
5. PILOT SHOULD PLAN FOR POSSIBLE CLIMB AS DEPICTED ON SID. ACTUAL CLIMB CLEARANCE WILL BE GIVEN BY ATC.
6. IF UNABLE TO COMPLY WITH FLIGHT RESTRICTIONS, ADVISE ATC WHEN ACFT COMMENCES TO PUSHBACK or TAXI TO THE HOLDING POINT FOR DEPARTURE.

**ALBOS3A, BONVO3A, NOBER3A, NUNLI3A,  
PASTO3A, ROBKA3A, SEMBO3A, TANGO3A,  
TARED3A, TL3A, UPKUP3A  
REQUIRE MINIMUM CLIMB GRADIENT OF  
450 FT PER NM (7.4%) UNTIL PASSING ALT 1500  
FOR AIRSPACE RESTRICTIONS ONLY.**

Ground Speed (KT)	75	100	150	200	250	300
Rate of Climb (ft/min)	562	749	1124	1499	1873	2248

CHANGE: APP FREQUENCY.