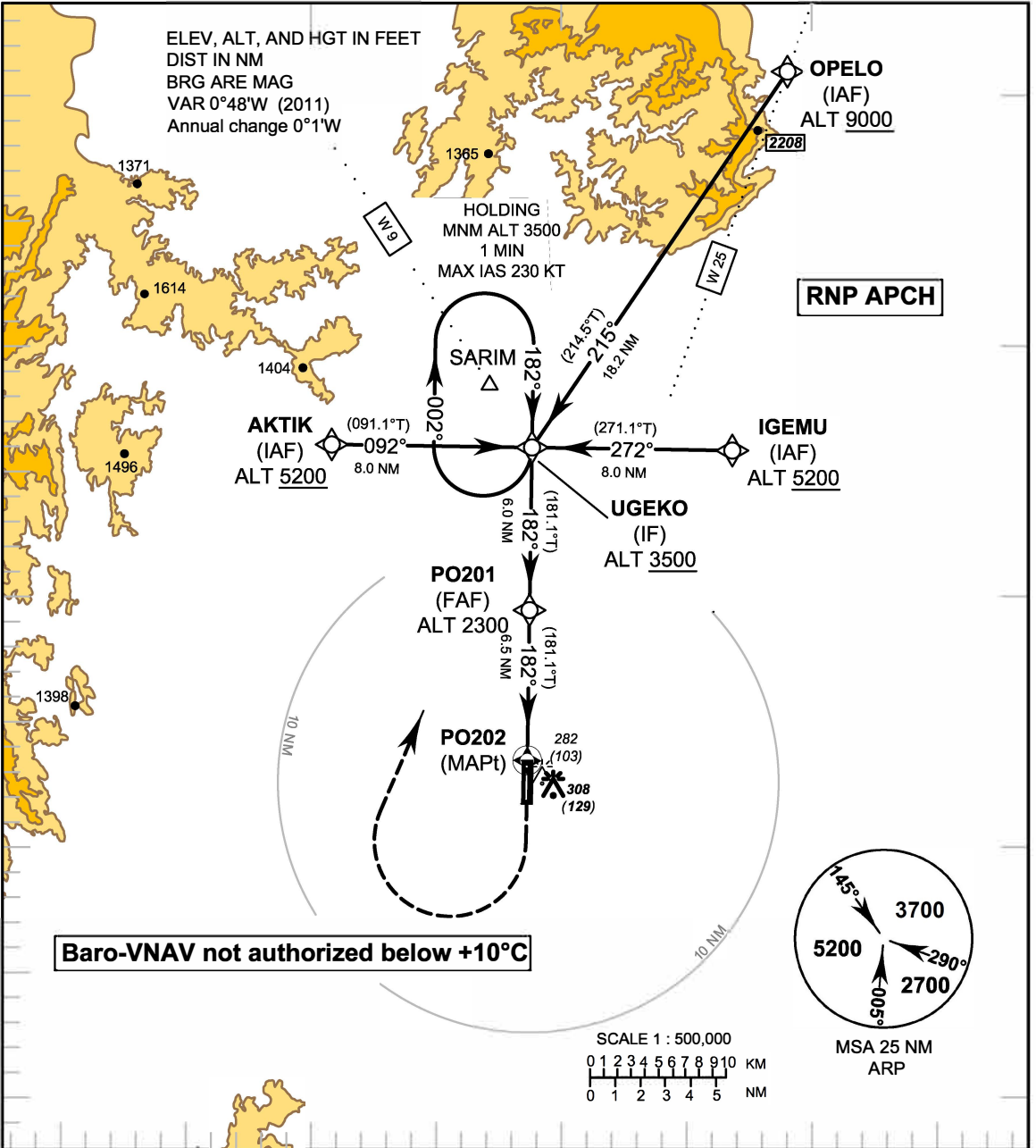
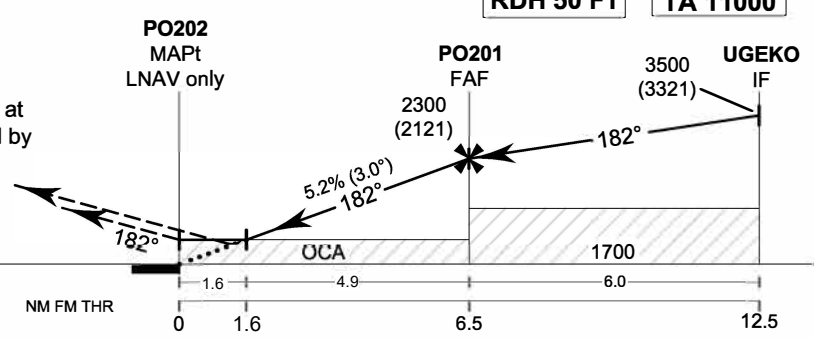


17° 40' N
 17° 30' N
 17° 20' N
 17° 10' N
 17° 00' N



099° 30' E 099° 40' E 099° 50' E 100° 00' E

Missed Approach :
No turn before MAPt.
 Climb on track 182° to 1700 FT,
 then turn right direct to **UGEKO** at
 3500 FT and hold or as directed by
 ATC.



OCA/H	A	B	C	D	NM to NEXT WPT	1.6 NM	2 NM	3 NM	4 NM	5 NM	6 NM	FAF	
LNAV/VNAV	470 (291)				Altitude (Height)	730 (551)	860 (681)	1175 (996)	1495 (1316)	1810 (1631)	2125 (1946)	2300 (2121)	
LNAV	730 (551)				Ground Speed	knot		70	90	100	120	140	160
Circling (OCH AAL)	800 (621)	910 (731)			Rate of descent FAF-MAPt (5.2%)	(ft/min)		369	474	527	632	737	843

CHANGE: PROFILE VIEW, MSA ALT.