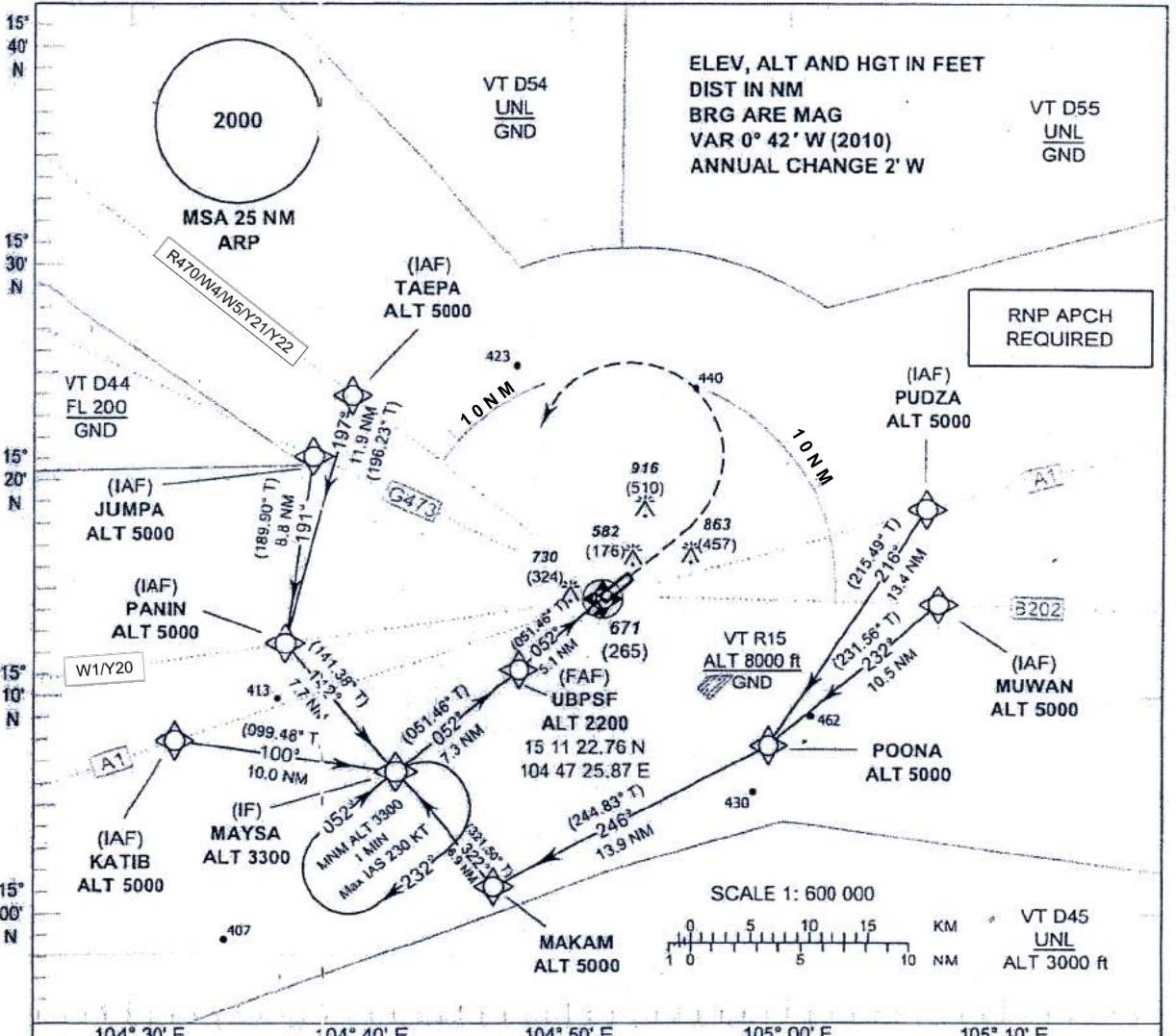


**INSTRUMENT APPROACH CHART - ICAO**

**AERODROME ELEV 406 FT  
HEIGHTS RELATED TO  
AERODROME ELEV  
BARO-VNAV NA BELOW 0°C**

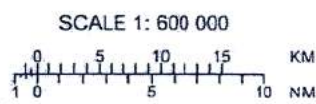
APP: 123.5, 257.8  
TWR: 119.9, 274.5  
GND: 121.9, 275.8

**UBON RATCHATHANI /  
Ubun Ratchathani (VTUU)  
RNP RWY05**



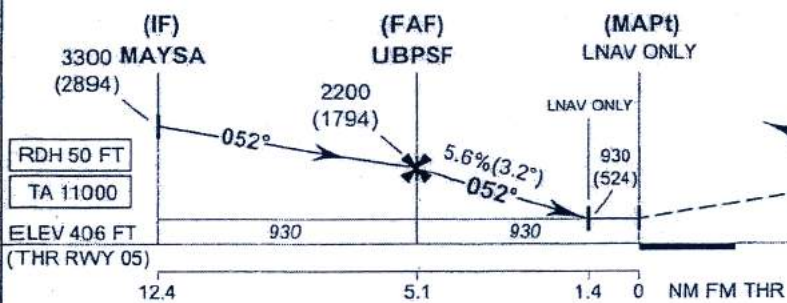
ELEV, ALT AND HGT IN FEET  
DIST IN NM  
BRG ARE MAG  
VAR 0° 42' W (2010)  
ANNUAL CHANGE 2' W

RNP APCH  
REQUIRED



**MISSED APPROACH:**  
No turn before MAPt.  
Climb on track 052° to 1400 (994) FT then turn left to IF at 3300 (2894) FT and hold or as directed by ATC.

Descent gradient not coincident with PAPI (3.0°).



OCA/H	A	B	C	D	NM to THR 05	FAF	5 NM	4 NM	3 NM	2 NM	1.4 NM	
LNAV / VNAV	860 (454)	920 (514)			Altitude (Height)	2200 (1794)	2155 (1749)	1815 (1409)	1475 (1069)	1135 (729)	930 (524)	
LNAV	930 (524)				Ground speed (GS)	knot	100	120	140	160	180	200
Circling (OCH AAL)	1350 (944)				Rate of descent	(ft/min)	565	680	795	905	1020	1135

CHANGE ROUTE Y20, Y21, Y22 ADDED.