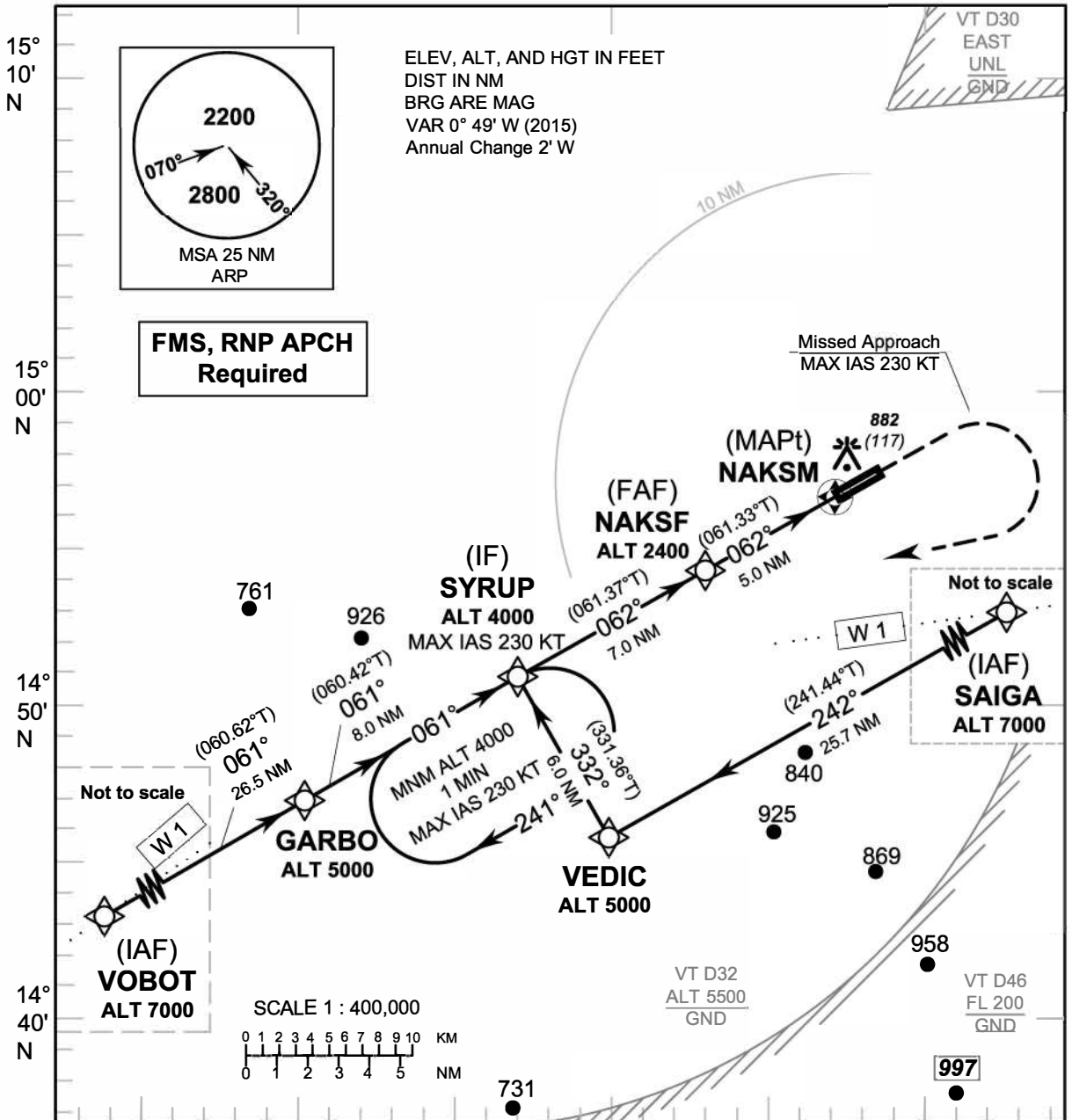


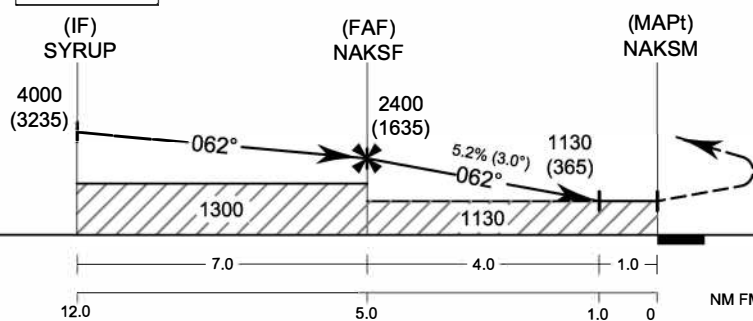
INSTRUMENT AERODROME ELEV 765 FT
APPROACH HEIGHTS RELATED TO
CHART-ICAO AERODROME ELEV

APP : 123.6
 TWR : 119.8, 236.6
 ATIS : 126.6

NAKHON RATCHASIMA/
Nakhon Ratchasima (VTUQ)
RNP RWY06



TA 11000 102° 00' E 102° 10' E 102° 20' E



Missed Approach :
No turn before MAPt.
 Climb on track 062° to 2000 FT,
 then turn right direct to **SYRUP**
 at 4000 FT and hold or as
 directed by ATC.

ELEV 765 FT
(THR RWY 06)

CHANGE: ATIS FREQUENCY ADDED.

OCA/H	A	B	C	D	NM to THR06	FAF	4 NM	3 NM	2 NM	1.0 NM		
LNAV	1130 (365)				Altitude (Height)	2400 (1635)	2080 (1315)	1760 (995)	1445 (680)	1130 (365)		
					Ground Speed	knot	70	90	100	120	140	160
Circling (OCH AAL)	1300 (535)		1500 (735)		Rate of descent (5.2%)	(ft/min)	369	474	527	632	737	843