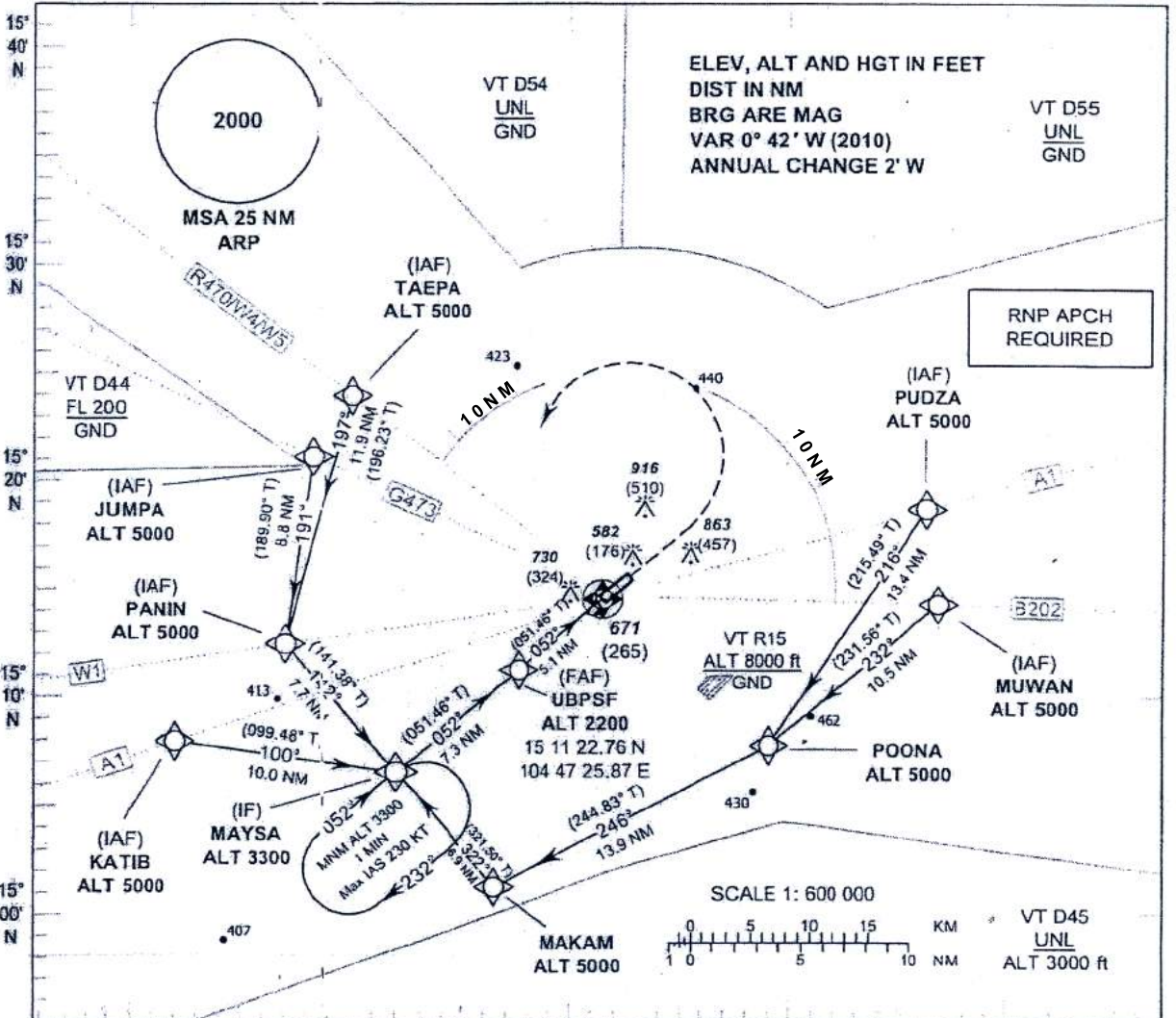


INSTRUMENT APPROACH CHART - ICAO

**AERODROME ELEV 406 FT
HEIGHTS RELATED TO AERODROME ELEV
BARO-VNAV NA BELOW 0°C**

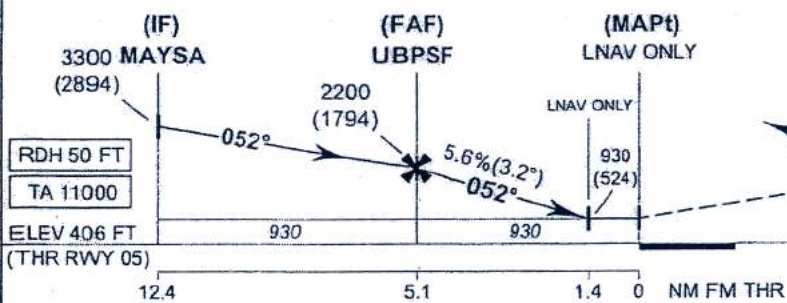
APP : 123.5 , 257.8
TWR : 119.9 , 274.5
GND : 121.9 , 275.8

**UBON RATCHATHANI /
Ubong Ratchathani (VTUU)
RNP RWY05**



MISSED APPROACH:
No turn before MAPt.
Climb on track 052° to 1400 (994) FT then turn left to IF at 3300 (2894) FT and hold or as directed by ATC.

Descent gradient not coincident with PAPI (3.0°).



OCA/H	A	B	C	D	NM to THR 05	FAF	5 NM	4 NM	3 NM	2 NM	1.4 NM	
LNAV / VNAV	860 (454)	920 (514)					2200 (1794)	2155 (1749)	1815 (1409)	1475 (1069)	1135 (729)	930 (524)
LNAV	930 (524)											
Circling (OCH AAL)	1350 (944)											

CHANGE: CHART TITLE: