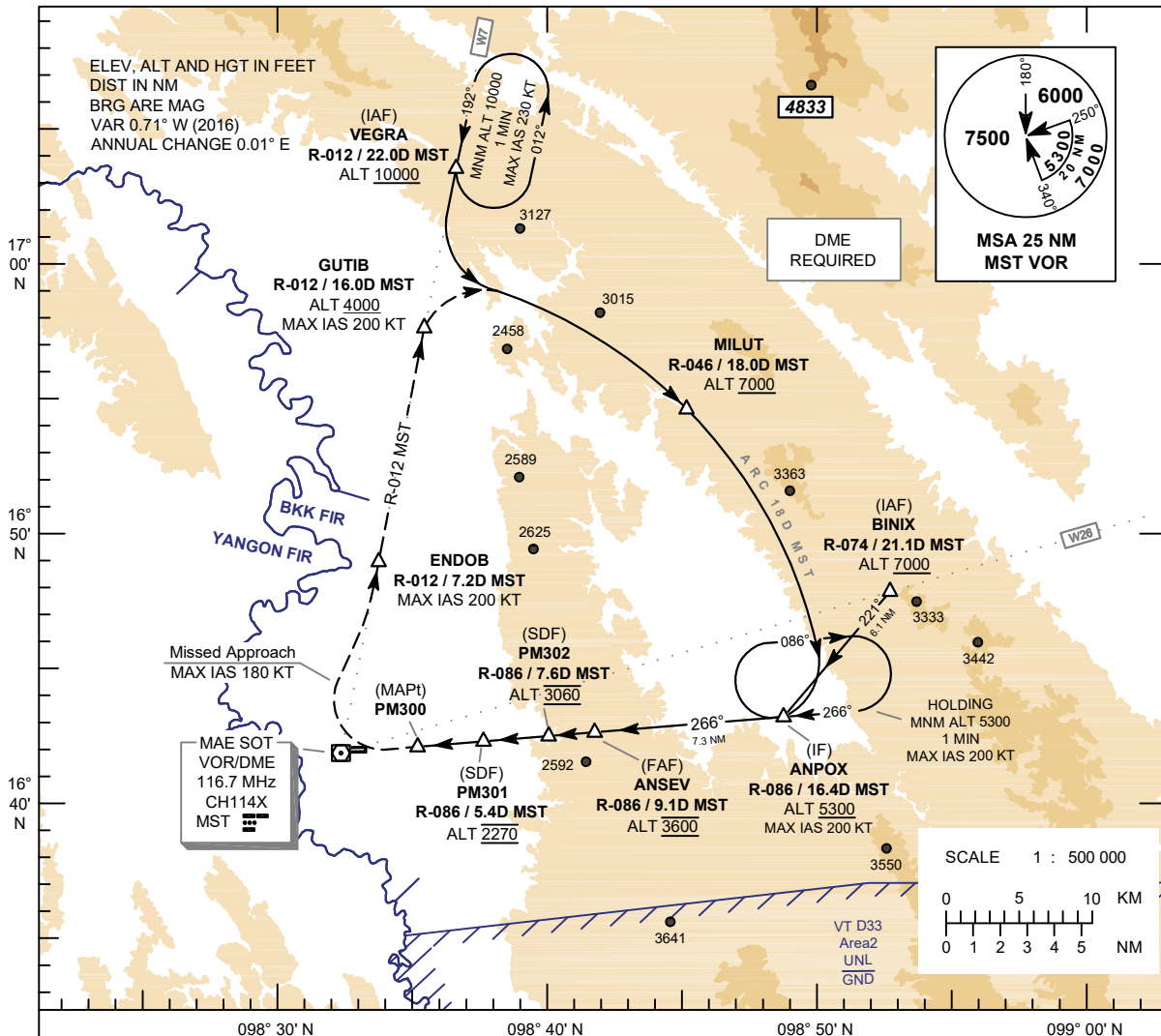


**INSTRUMENT
APPROACH
CHART - ICAO**

**AERODROME ELEV 693 FT
HEIGHTS RELATED TO
THR RWY27 - ELEV 681 FT**

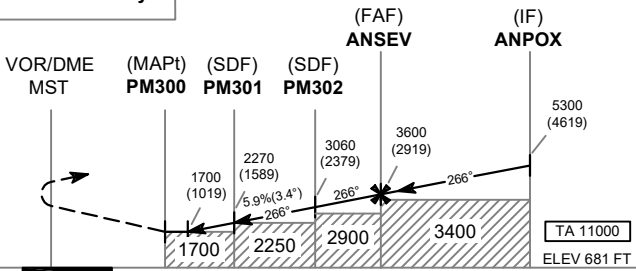
APP : 120.65 MHz
TWR : 118.35 , 236.6 MHz
ATIS : 316.0 KHz

**TAK / Mae Sot (VTPM)
VOR RWY27**



CAUTION : Missed approach procedure shall be within BKK FIR only

MISSED APPROACH :
No turn before MAPt.
Speed restricted to MAX IAS 180 KT until after turn.
At MAPt, turn right climb to intercept outbound R-012 MST VOR at ENDOB, then proceed on R-012 MST VOR to GUTIB at minimum ALT 4000 ft and follow ARC 18 D MST to MILUT at minimum ALT 7000 ft, then to ANPOX at minimum ALT 5300 FT and hold or as directed by ATC.



CHANGE: ENDOB SPEED RESTRICTION ADDED.

OCA/H	A	B	C	Distance (MST)	DME FM VOR/DME									
					3.8 D	4 D	5 D	PM301	6 D	7 D	PM302	8 D	FAF	
Straight-in Approach	1700 (1019)			Altitude (Height)	1700 (1019)	1770 (1089)	2130 (1449)	2270 (1589)	2490 (1809)	2845 (2164)	3060 (2379)	3205 (2524)	3600 (2919)	5300 (4619)
					Ground speed	knot			70	90	100	120	140	160
Circling (OCH AAL)	NOT AUTHORIZED			Rate of descent (5.9%)	ft/min			418	538	597	717	836	956	