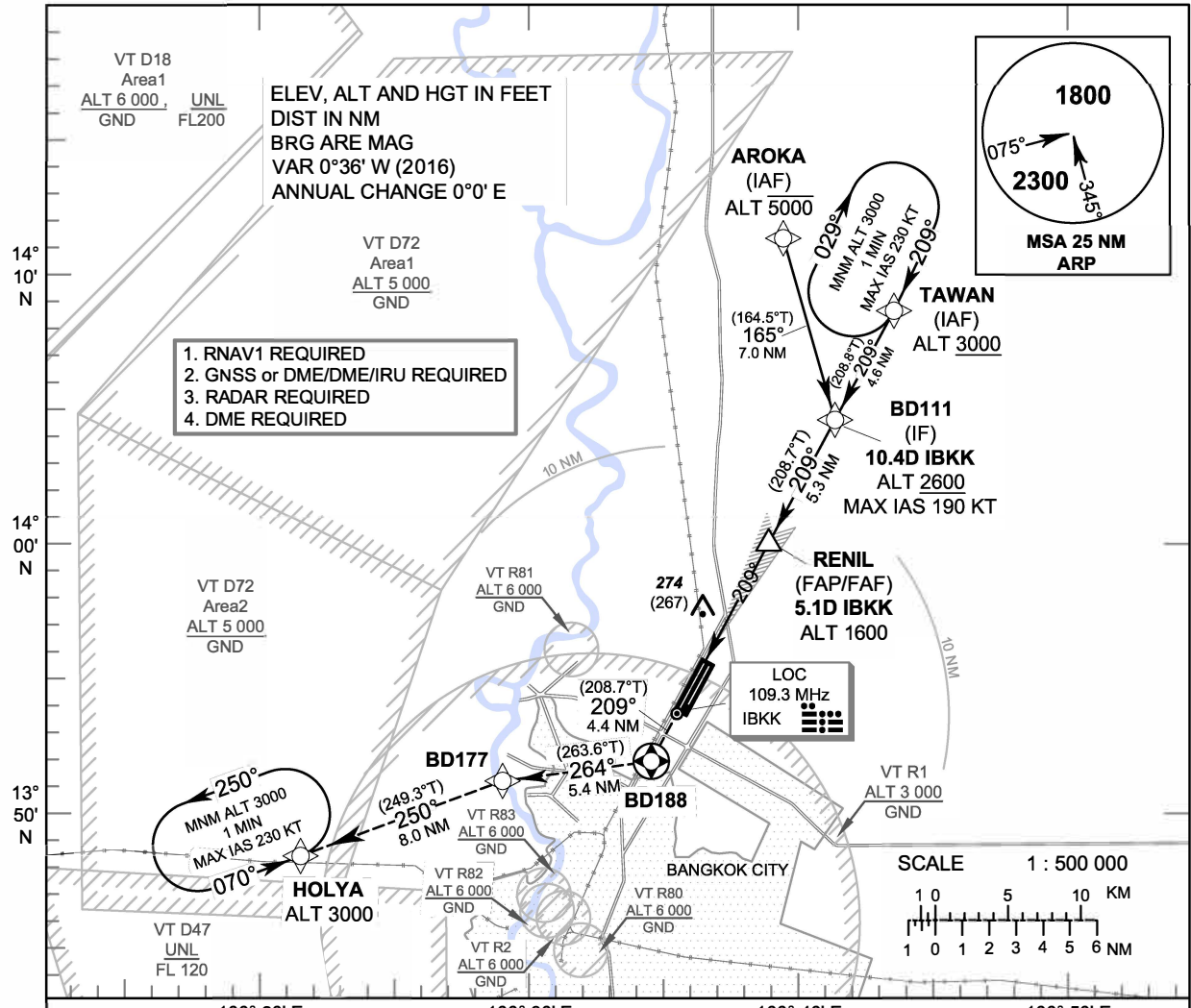


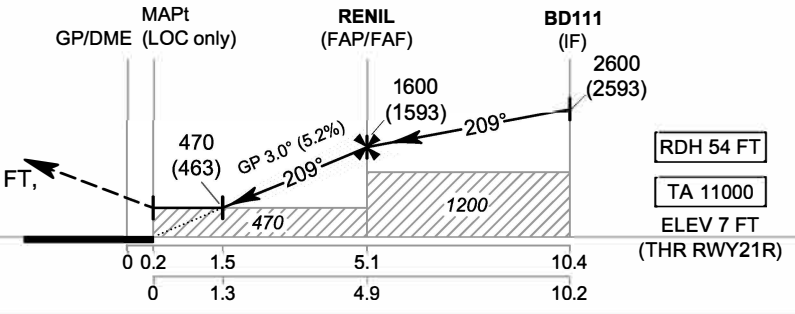
INSTRUMENT APPROACH CHART - ICAO **AERODROME ELEV 9 FT**
HEIGHTS RELATED TO THR RWY21R - ELEV 7 FT

APP	: 119.1, 262.5
	: 119.4, 262.5
	: 120.3, 262.5
	: 133.4, 262.5
	: 122.35, 262.5
	: 124.35, 262.5
	: 125.2, 262.5
DAR	: 133.0, 262.5
TWR	: 118.1, 236.6
ATIS	: 126.4, 344.6

BANGKOK / Don Mueang Intl (VTBD)
ILS or LOC z RWY21R
CAT II



MISSED APPROACH :
No turn before MAPt (for LOC only).
 Climb on track 209° to BD188, then turn right to BD177, then proceed to HOLYA at 3000 FT, and hold or as directed by ATC.



CHANGE: APP FREQUENCY.

OCA/H		A	B	C	D	GS OUT	Distance (IBKK)	1.5 D	2 D	3 D	4 D	5 D	FAF
Straight - in Approach	CAT I	220 (213)					Ground speed	Altitude (Height)	470 (463)	625 (618)	940 (933)	1260 (1253)	1575 (1568)
	CAT II	120 (113)	150 (143)			knot		70	90	100	120	140	160
LOC only		470 (463)				Rate of descent (5.2%)	(ft/min)	369	474	527	632	737	843
Circling (OCH AAL)		800 (791)		1100 (1091)									