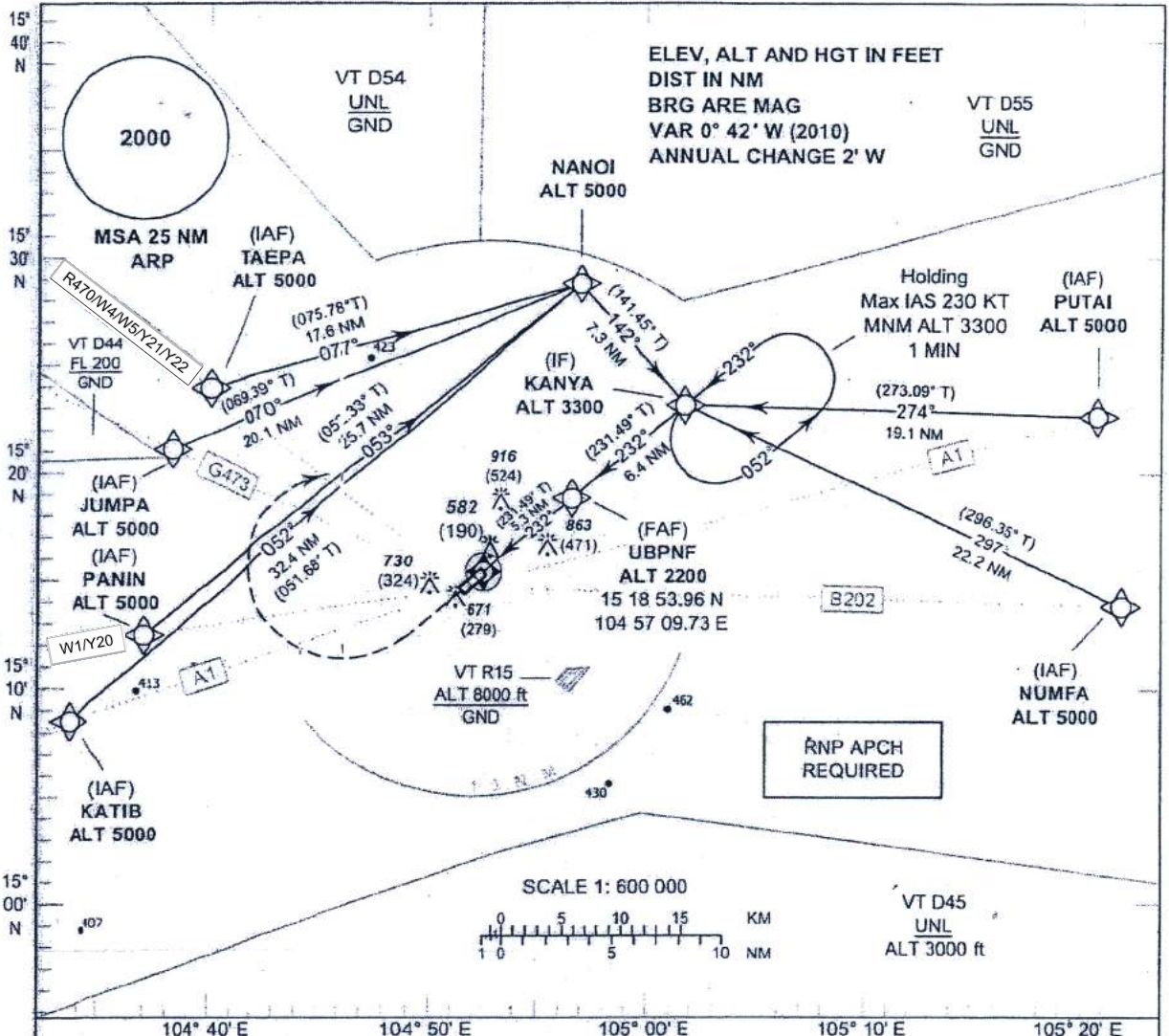


**INSTRUMENT APPROACH CHART - ICAO**  
**AERODROME ELEV 406 FT**  
**HEIGHTS RELATED TO THR RWY 23 - ELEV 392 FT**  
**BARO-VNAV NA BELOW 0°C**

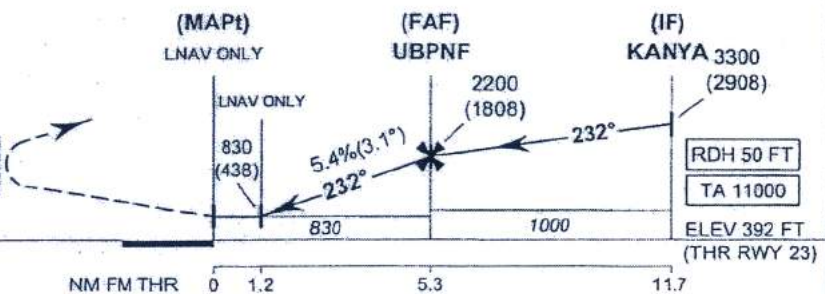
APP : 123.5 , 257.8  
 TWR : 119.9 , 274.5  
 GND : 121.9 , 275.8

**UBON RATCHATHANI /**  
**Ubon Ratchathani (VTUU)**  
**RNP RWY23**



**MISSED APPROACH:**  
 No turn before MAPt.  
 Climb on track 232° to 1400 (1008) FT then turn right to IF at 3300 (2908) FT and hold or as directed by ATC.

Descent gradient not coincident with PAPI (3.0°).



OCA/H	A	B	C	D	NM to THR 23	1.2 NM	2 NM	3 NM	4 NM	5 NM	FAF	
LNAV / VNAV	740 (348)	750 (358)	790 (398)	820 (428)	Altitude (Height)	830 (438)	1100 (708)	1425 (1033)	1755 (1363)	2080 (1688)	2200 (1808)	
LNAV	830 (438)				Ground speed (GS)	knot	100	120	140	160	180	200
Circling (OCH AAL)	1350 (944)				Rate of descent (ft/min)		545	655	765	875	985	1095

CHANGE-ROUTE Y20, Y21, Y22 ADDED.