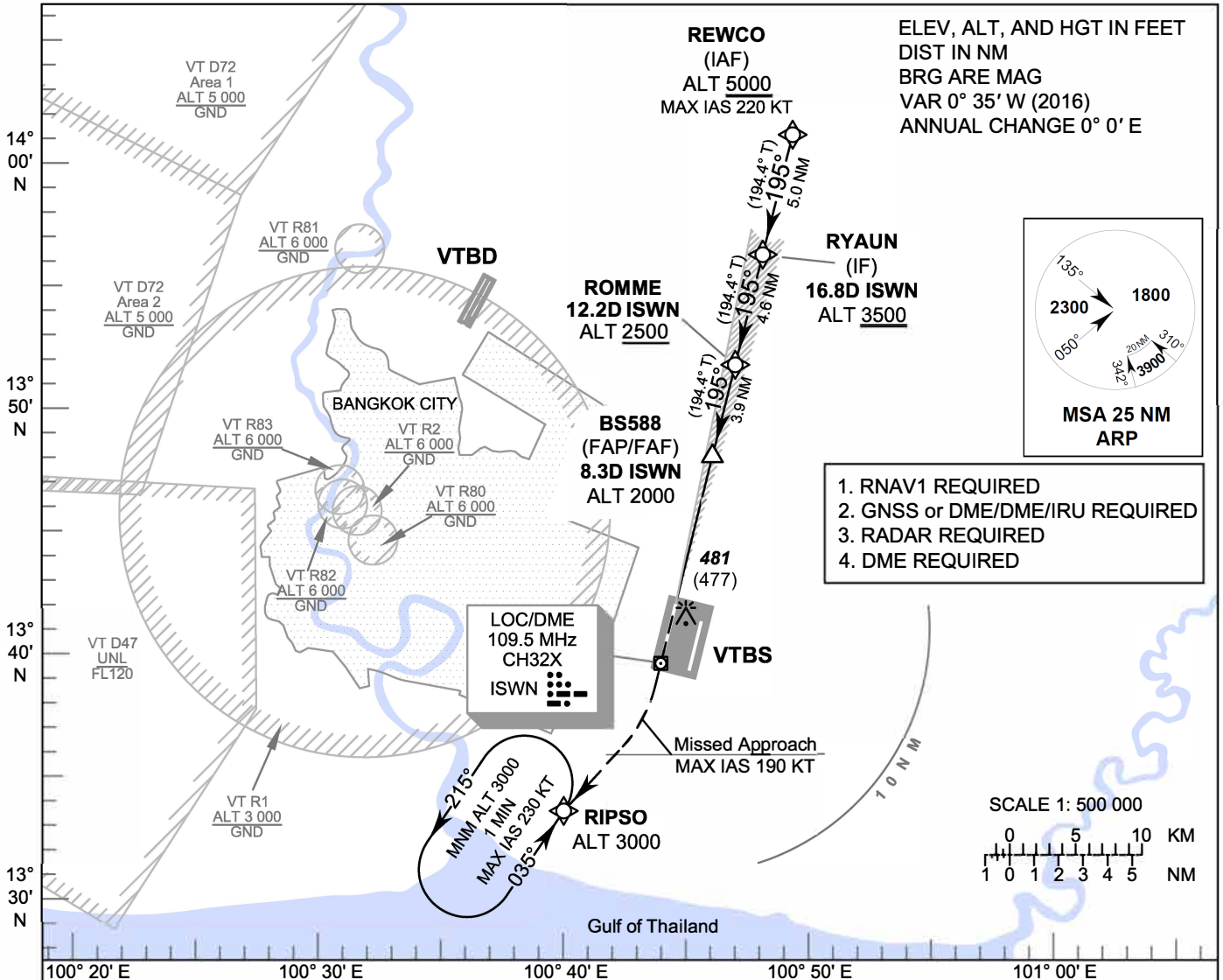


INSTRUMENT APPROACH CHART - ICAO **AERODROME ELEV 4 FT**
HEIGHTS RELATED TO THR RWY19R - ELEV 4 FT

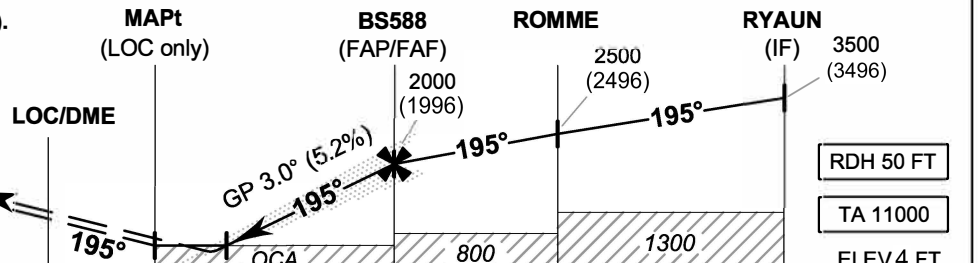
APP	: 119.1, 262.5
	: 120.3, 262.5
	: 133.4, 262.5
	: 122.35, 262.5
	: 124.35, 262.5
	: 125.2, 262.5
ARR	: 121.1
	: 126.3
TWR	: 118.2, 274.5
	: 119.0
ARR ATIS	: 133.6, 278.6

BANGKOK / Suvarnabhumi Intl (VTBS)

ILS or LOC z RWY19R
CAT II



MISSED APPROACH:
No turn before MAPt (for LOC only).
Speed restricted to MAX IAS 190 KT until after turn.
 Climb to 1000 FT on track 195°, then climbing right turn direct to RIPSO at 3000 FT and hold or as directed by ATC.
 (If unable to reach 3000 FT at RIPSO, continue climb in the holding pattern.)



	DME FM LOC/DME	0	2.2	4.0	8.3	12.2	16.8						
	NM FM THR	0	1.8	6.1	10.0	14.6							
	OCA/H	A	B	C	D								
Straight-in Approach	CAT I	205 (201)				Distance (ISWN)	4 D	5 D	6 D	7 D	8 D	FAF	
	CAT II	105 (101)				Altitude (Height)	620 (616)	940 (936)	1255 (1251)	1570 (1566)	1890 (1886)	2000 (1996)	
	LOC only	620 (616)				Ground speed	knot	70	90	100	120	140	160
	Circling (OCH AAL)	800 (796)	900 (896)			Rate of descent (5.2%)	ft/min	369	474	527	632	737	843

CHANGE: MSA, AD ELEV, THR ELEV.