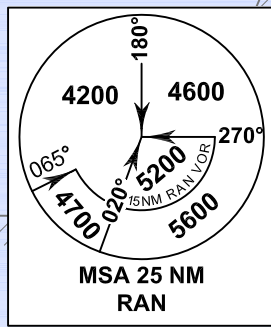
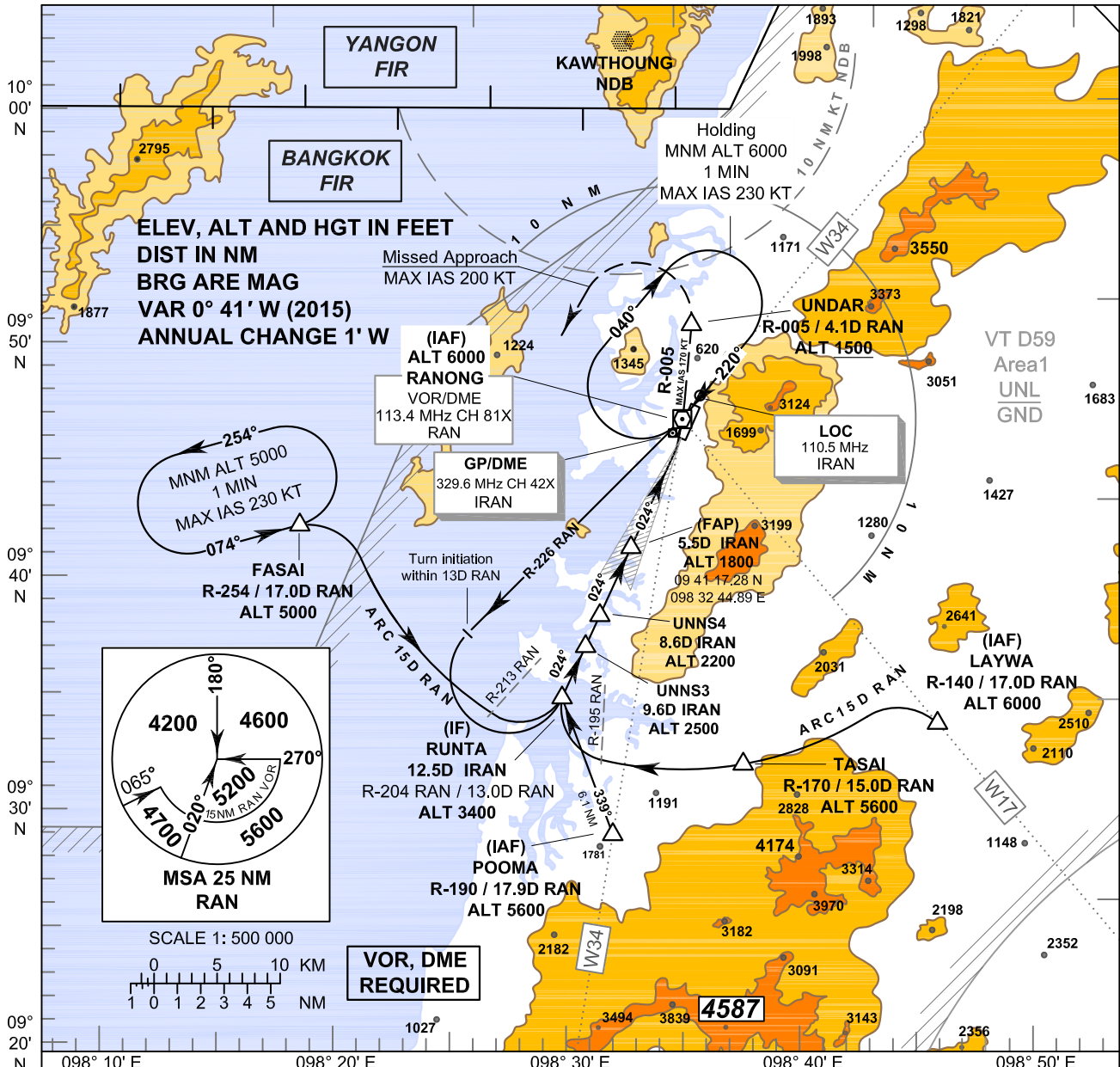


INSTRUMENT APPROACH CHART - ICAO

AERODROME ELEV 57 FT
HEIGHTS RELATED TO THR RWY 02 - ELEV 36 FT

APP : 125.1
 TWR : 122.25 , 236.6
 ATIS : 126.475

RANONG / Ranong (VTSR) ILS RWY02



VOR, DME REQUIRED

OCA/H	(IF) RUNTA				(FAP)		GP/DME	UNDAR	MISSED APPROACH:							
	A	B	C	D	Ground speed	knot			70	90	100	120	140	160		
RDH 50 FT TA 11000 ELEV 36 FT (THR RWY 02)	12.5	9.6	8.6	5.5	970	970	970 (934)	CG 3.0°	CG 2.5%	CG 5.0%	Speed restricted to MAX IAS 170 KT until UNDAR and 200 KT until after turn. At OCA, turn left climb to intercept R-005 RAN VOR until UNDAR at or above 1500 FT. After UNDAR, turn left to intercept outbound R-254 RAN VOR, then proceed to FASAI at 5000 FT and hold or as directed by ATC.					
	12.4	9.5	8.5	5.4	970	970										
Straight - in Approach	CAT I	970 (934)				970 (934)		Rate of descent (3.0°)	(ft/min)	372	478	531	637	743	849	
Circling (OCH AAL)	Not Authorized															

NOTE : OCA (OCH): 580 (544) FT can be achieved for all aircraft categories which can commence a missed approach climb gradient of 5.0%(304 FT/NM) until passing UNDAR.

CHANGE : OCA.