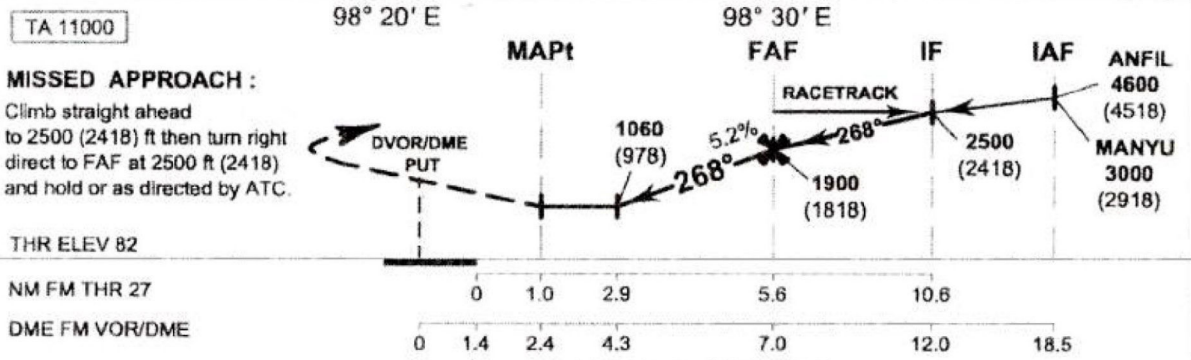
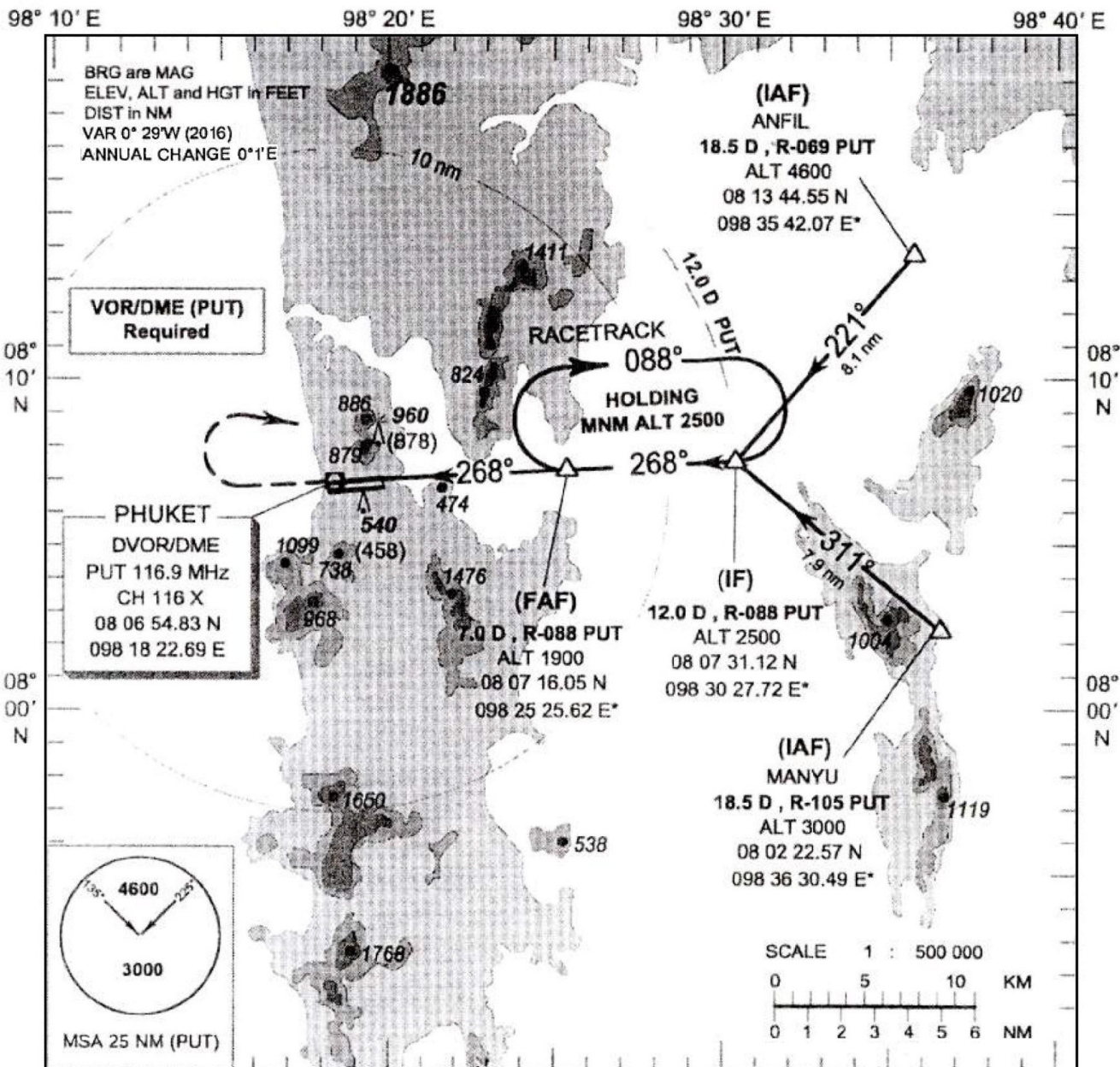


**INSTRUMENT APPROACH CHART - ICAO** **AERODROME ELEV 82 ft**  
 HEIGHTS RELATED TO AERODROME ELEV.

APP : 124.7, 284.0  
 ARR : 120.7  
 TWR : 118.1, 236.6  
 GND : 121.9  
 ATIS : 128.0

**PHUKET / Phuket Intl (VTSP)**  
**VOR Z RWY 27**



OCA/H	A	B	C	D	Ground speed (GS) knot	Distance (PUT)					
						5D	6D	7D	8D	9D	
Straight - in approach	1060 (978)				Rate of descent (ft/min)	530	635	745	850	955	1060
Circling (OCH AAL)	1300 (1218)		1400 (1318)		FAF-MAPT 4.6 nm (min/s)	2:46	2:18	1:59	1:44	1:32	1:23

REMARK : Circling to the Right (North of aerodrome) only.

CHANGE : MAG VAR.