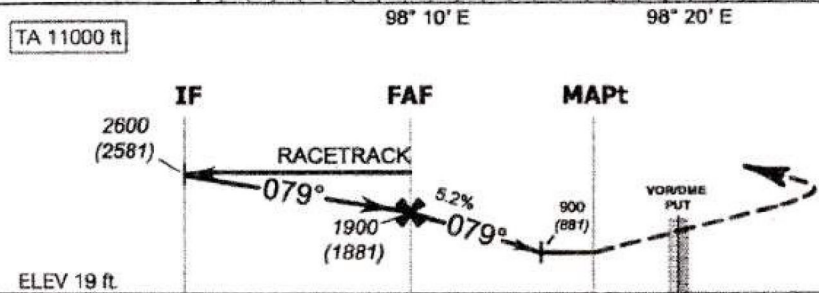
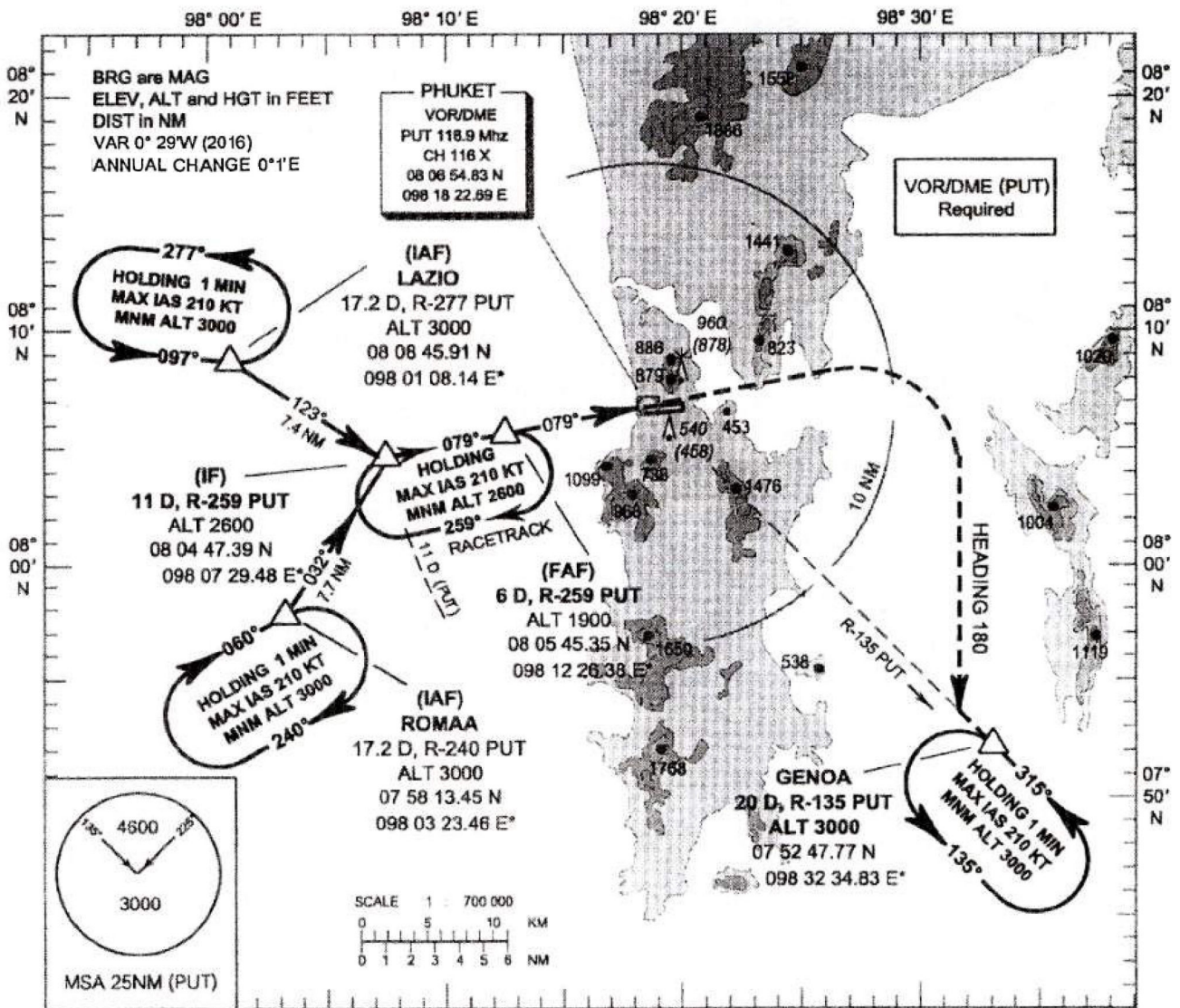


INSTRUMENT AERODROME ELEV. 82 ft  
 APPROACH HEIGHTS RELATED TO  
 CHART - ICAO THR RWY 09 ELEV 19 ft

APP : 124.7, 284.0  
 ARR : 120.7  
 TWR : 118.1, 236.6  
 GND : 121.9  
 ATIS : 128.0

PHUKET / Phuket Intl (VTSP)  
 VOR Z RWY 09



MISSED APPROACH :  
 Climb straight ahead to 2500 (2481) ft then turn right continue climb on heading 180 to intercept R-135 (PUT) direct to GENOA at 3000 (2981) ft and hold or as directed by ATC.

	10.8	5.8	2.6	1.3	0	NM FM THR 09							
	11.0	6.0	2.8	1.5	0.2	DME FM VOR/DME (PUT)							
						Distance (PUT)	FAF	5 D	4 D	3 D	2.8 D		
OCA/H	A	B	C	D		Altitude (Height)	1900 (1881)	1600 (1581)	1280 (1261)	960 (941)	900 (881)		
Straight-in approach	900 (881)					Ground speed (GS)	knot	100	120	140	160	180	200
Circling (OCH AAL)	1300 (1218)		1400 (1318)			Rate of descent (ft/min)	530	635	745	850	955	1060	
REMARK : Circling to the Left (North of aerodrome) only.						FAF-MAPt 4.5 NM	(min:s)	2:42	2:15	1:56	1:42	1:30	1:21

CHANGE : MAG VAR.