

**STANDARD ARRIVAL CHART - INSTRUMENT (STAR) - ICAO**

TRANSITION ALTITUDE  
11000 FT

**SPEED RESTRICTION**  
MAX IAS 250 KT AT OR BELOW ALT 10000 FT UNLESS OTHERWISE AUTHORIZED BY ATC.

APP : 119.1, 262.5  
: 119.4, 262.5  
: 120.3, 262.5  
: 133.4, 262.5  
: 122.35, 262.5  
: 124.35, 262.5  
: 125.2, 262.5  
DAR : 133.0, 262.5  
TWR : 118.1, 236.6  
ATIS : 126.4, 344.6

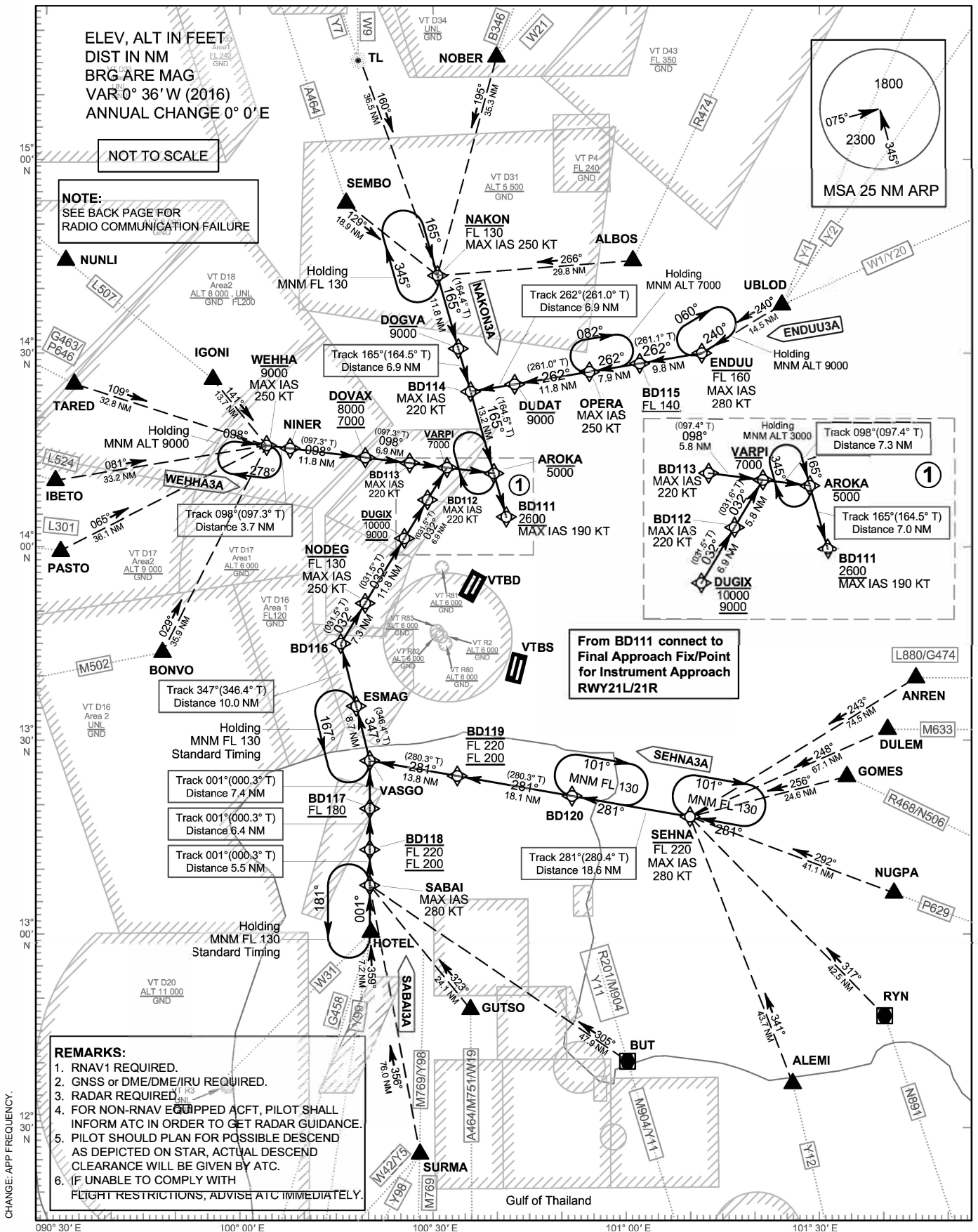
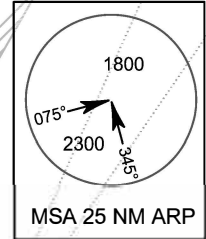
**BANGKOK/Don Mueang Intl (VTBD)  
RNAV RWY21L/21R**

ENDUU3A NAKON3A  
SABAI3A SEHNA3A WEHHA3A

ELEV, ALT IN FEET  
DIST IN NM  
BRG ARE MAG  
VAR: 0° 36' W (2016)  
ANNUAL CHANGE 0° 0' E

NOT TO SCALE

**NOTE:**  
SEE BACK PAGE FOR RADIO COMMUNICATION FAILURE



CHANGE APP FREQUENCY.