

**STANDARD DEPARTURE CHART-  
INSTRUMENT (SID) - ICAO**

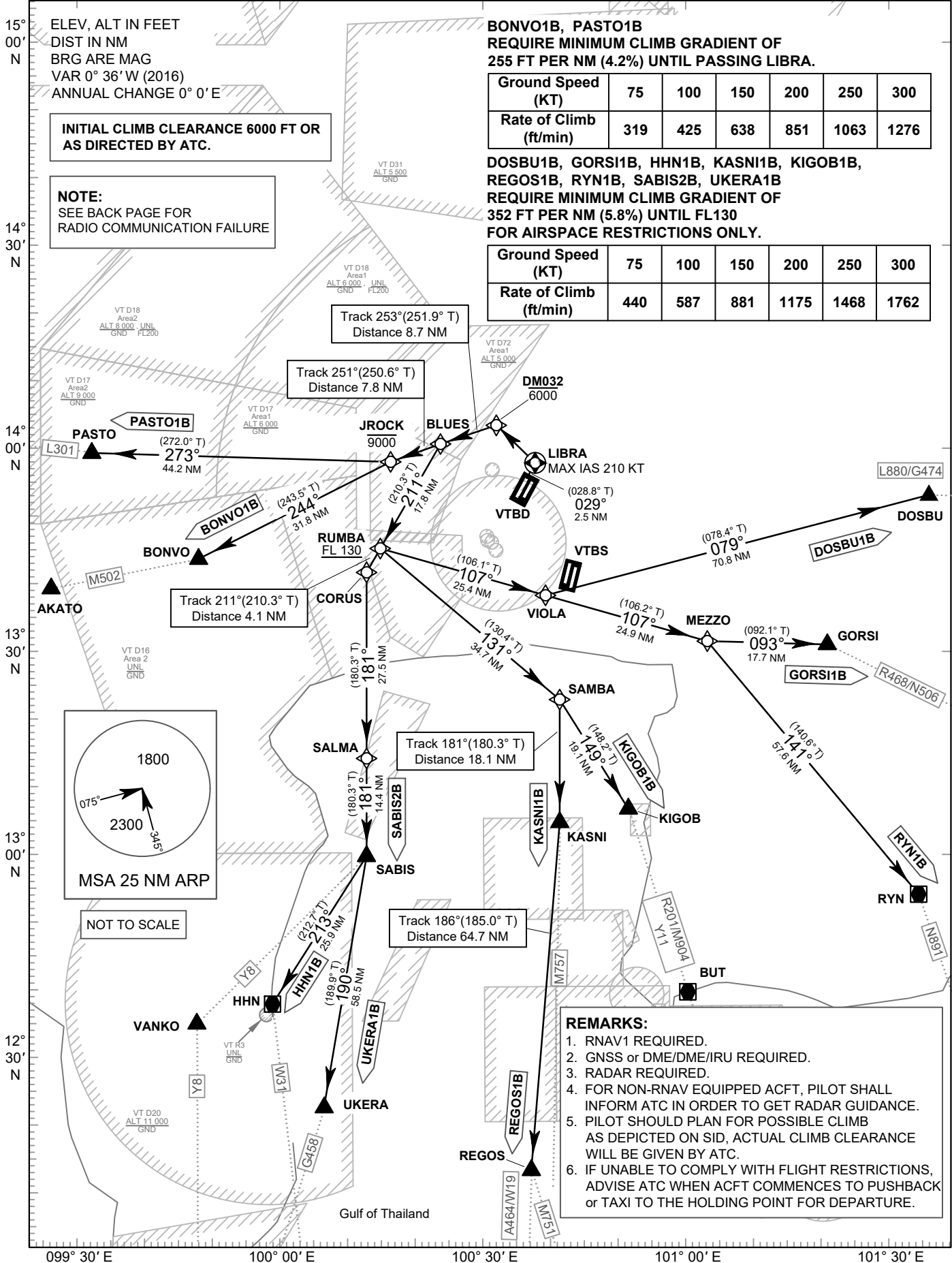
TRANSITION ALTITUDE  
11000 FT

**SPEED RESTRICTION**  
MAX IAS 250 KT AT OR  
BELOW ALT 10000 FT  
UNLESS OTHERWISE  
AUTHORIZED BY ATC.

APP : 119.1, 262.5  
: 119.4, 262.5  
: 120.3, 262.5  
: 133.4, 262.5  
: 122.35, 262.5  
: 124.35, 262.5  
: 125.2, 262.5  
DAR : 133.0, 262.5  
TWR : 118.1, 236.6  
DEP ATIS : 118.55

**BANGKOK/Don Mueang Intl (VTBD)  
RNAV RWY03L**

BONVO1B DOSBU1B GORSI1B  
HHN1B KASNI1B KIGOB1B  
PASTO1B REGOS1B  
RYN1B SABIS2B UKERA1B



**INITIAL CLIMB CLEARANCE 6000 FT OR  
AS DIRECTED BY ATC.**

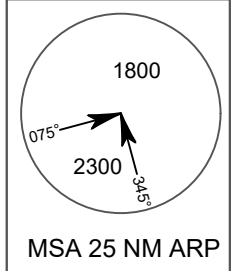
**NOTE:**  
SEE BACK PAGE FOR  
RADIO COMMUNICATION FAILURE

**BONVO1B, PASTO1B  
REQUIRE MINIMUM CLIMB GRADIENT OF  
255 FT PER NM (4.2%) UNTIL PASSING LIBRA.**

|                        |     |     |     |     |      |      |
|------------------------|-----|-----|-----|-----|------|------|
| Ground Speed (KT)      | 75  | 100 | 150 | 200 | 250  | 300  |
| Rate of Climb (ft/min) | 319 | 425 | 638 | 851 | 1063 | 1276 |

**DOSBU1B, GORSI1B, HHN1B, KASNI1B, KIGOB1B,  
REGOS1B, RYN1B, SABIS2B, UKERA1B  
REQUIRE MINIMUM CLIMB GRADIENT OF  
352 FT PER NM (5.8%) UNTIL FL130  
FOR AIRSPACE RESTRICTIONS ONLY.**

|                        |     |     |     |      |      |      |
|------------------------|-----|-----|-----|------|------|------|
| Ground Speed (KT)      | 75  | 100 | 150 | 200  | 250  | 300  |
| Rate of Climb (ft/min) | 440 | 587 | 881 | 1175 | 1468 | 1762 |



- REMARKS:**
1. RNAV1 REQUIRED.
  2. GNSS or DME/DME/IRU REQUIRED.
  3. RADAR REQUIRED.
  4. FOR NON-RNAV EQUIPPED ACFT, PILOT SHALL INFORM ATC IN ORDER TO GET RADAR GUIDANCE.
  5. PILOT SHOULD PLAN FOR POSSIBLE CLIMB AS DEPICTED ON SID, ACTUAL CLIMB CLEARANCE WILL BE GIVEN BY ATC.
  6. IF UNABLE TO COMPLY WITH FLIGHT RESTRICTIONS, ADVISE ATC WHEN ACFT COMMENCES TO PUSHBACK or TAXI TO THE HOLDING POINT FOR DEPARTURE.

CHANGE: APP FREQUENCY.