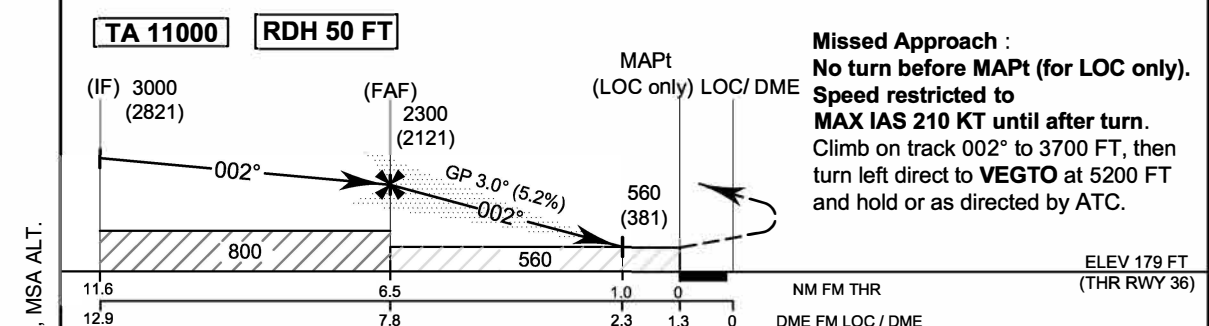


099° 30' E 099° 40' E 099° 50' E 100° 00' E



OCA/H	A	B	C	D	GS out	Distance (ISKT)	FAF	7 D	6 D	5 D	4 D	3 D	2.3 D
						Altitude (Height)	2300 (2121)	2030 (1851)	1715 (1536)	1400 (1221)	1080 (901)	765 (586)	560 (381)
Straight-in approach CAT I	420 (241)					Ground Speed	knot	70	90	100	120	140	160
LOC Only	560 (381)					Rate of descent (3.0°)	(ft/min)	372	478	531	637	743	849
Circling (OCH AAL)	800 (621)	910 (731)											

CHANGE: PROFILE VIEW, MSA ALT.