

**STANDARD DEPARTURE CHART-  
INSTRUMENT (SID) - ICAO**

TRANSITION ALTITUDE  
11000 FT

**SPEED RESTRICTION**  
MAX IAS 250 KT AT OR  
BELOW ALT 10000 FT  
UNLESS OTHERWISE  
AUTHORIZED BY ATC.

APP : 119.7 , 134.5  
238.3 , 273.3

TWR : 118.3 , 227.0

GND : 121.9 , 275.8

ATIS : 127.2

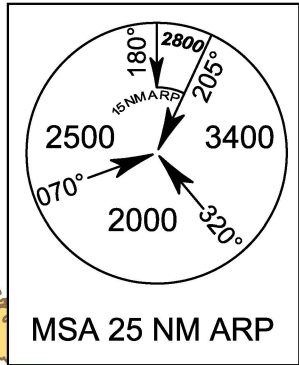
**RAYONG / U-TAPAO RAYONG  
PATTAYA Intl (VTBU)  
RNAV RWY36**

BKK1B

ELEV, ALT, AND HGT IN FEET  
DIST IN NM  
BRG ARE MAG  
VAR 0.55° W (2016)  
ANNUAL CHANGE 0.00° E

NO TURN BEFORE DER

**1. RNP1 REQUIRED**  
**2. GNSS REQUIRED**



BAN MAP TA PHUT  
GAS SEPARATION  
PLANT, 2000 FT

VT D23  
ALT 6000  
GND

VT D22  
FL 150  
GND

VT D21  
Area1  
ALT 6000  
GND

VT D21  
Area2  
FL 150  
GND

VT D21  
Area3  
FL 150  
GND

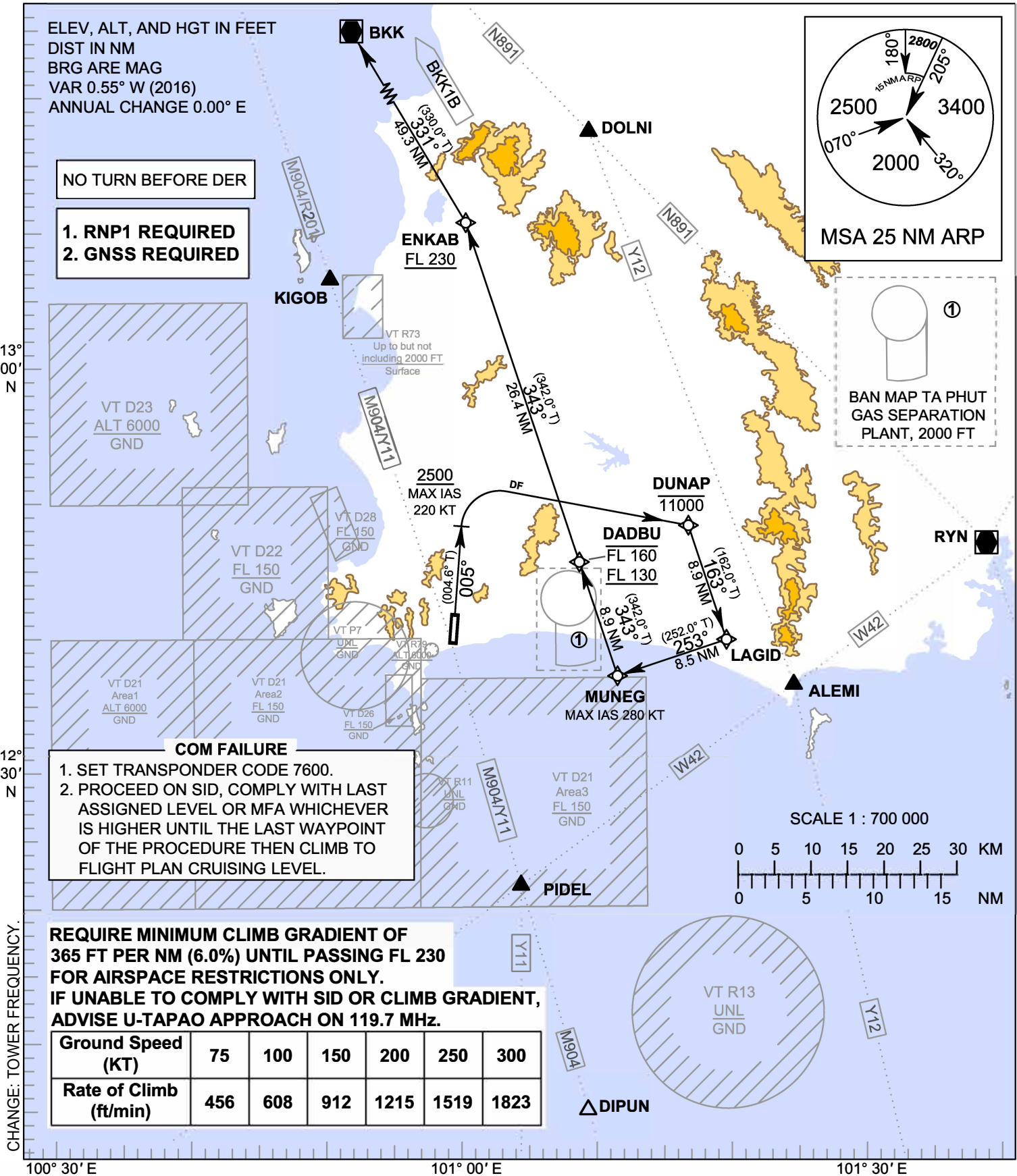
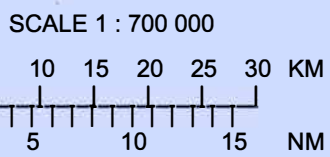
**COM FAILURE**

1. SET TRANSPONDER CODE 7600.

2. PROCEED ON SID, COMPLY WITH LAST ASSIGNED LEVEL OR MFA WHICHEVER IS HIGHER UNTIL THE LAST WAYPOINT OF THE PROCEDURE THEN CLIMB TO FLIGHT PLAN CRUISING LEVEL.

**REQUIRE MINIMUM CLIMB GRADIENT OF 365 FT PER NM (6.0%) UNTIL PASSING FL 230 FOR AIRSPACE RESTRICTIONS ONLY. IF UNABLE TO COMPLY WITH SID OR CLIMB GRADIENT, ADVISE U-TAPAO APPROACH ON 119.7 MHz.**

<b>Ground Speed (KT)</b>	75	100	150	200	250	300
<b>Rate of Climb (ft/min)</b>	456	608	912	1215	1519	1823



CHANGE: TOWER FREQUENCY.

13° 00' N

12° 30' N

100° 30' E

101° 00' E

101° 30' E