

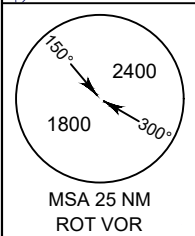
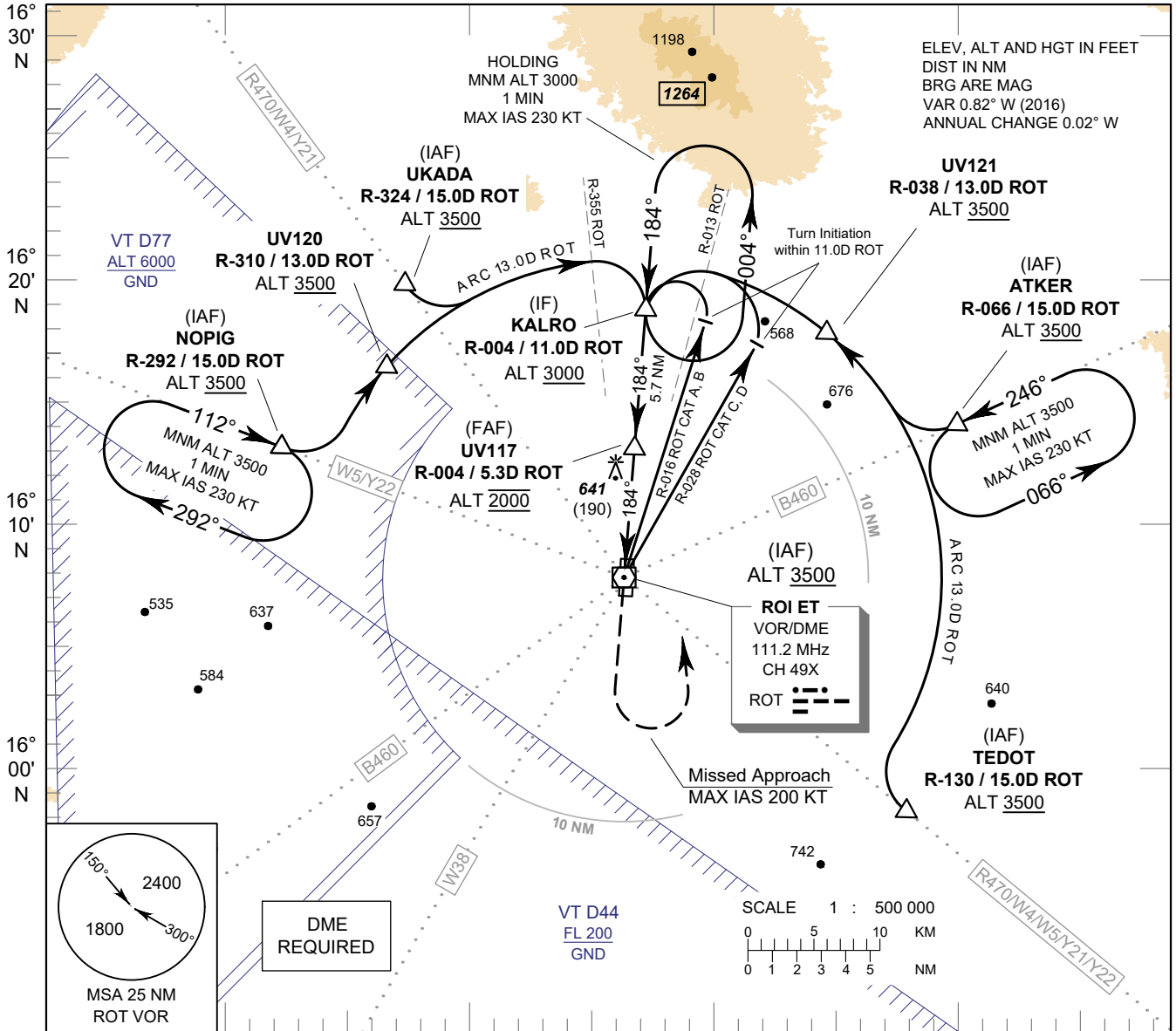
**INSTRUMENT  
APPROACH  
CHART - ICAO**

**AERODROME ELEV 451 FT  
HEIGHTS RELATED TO  
AERODROME ELEV**

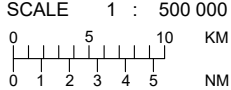
APP : 125.4  
TWR : 119.75 , 236.6  
ATIS : 128.275

**ROI ET / Roi Et (VTUV)**

**VOR RWY18**

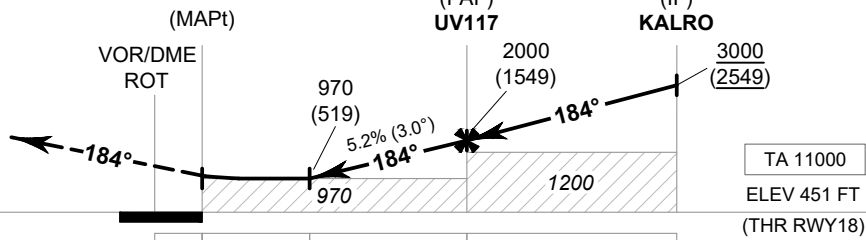


**DME  
REQUIRED**



103° 30' E      103° 40' E      103° 50' E      104° 00' E

**MISSED APPROACH :**  
No turn before MAPt.  
Speed restricted to  
**MAX IAS 200 KT** until after turn.  
Climb on track 184° to 1500 FT,  
then turn left to intercept  
outbound R-004 ROT VOR and  
proceed to KALRO at minimum 3000 FT  
and hold or as directed by ATC.



DME FM VOR/DME      0    0.6    2.1    5.3    11.0  
NM FM THR            0    1.5    4.7    10.4

OCA/H	A	B	C	D	Distance (ROT)	2.1D	3D	4D	5D	FAF			
Straight - in Approach	970 (519)				Altitude (Height)	970 (519)	1260 (809)	1575 (1124)	1890 (1439)	2000 (1549)			
					Ground Speed	knot	70	90	100	120	140	160	
Circling (OCH AAL)	1200 (749)				Rate of Descent	5.2%	ft/min	369	474	527	632	737	843

CHANGE: ROUTE Y21, Y22 ADDED.