

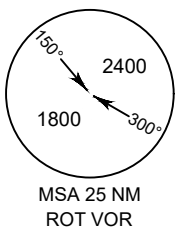
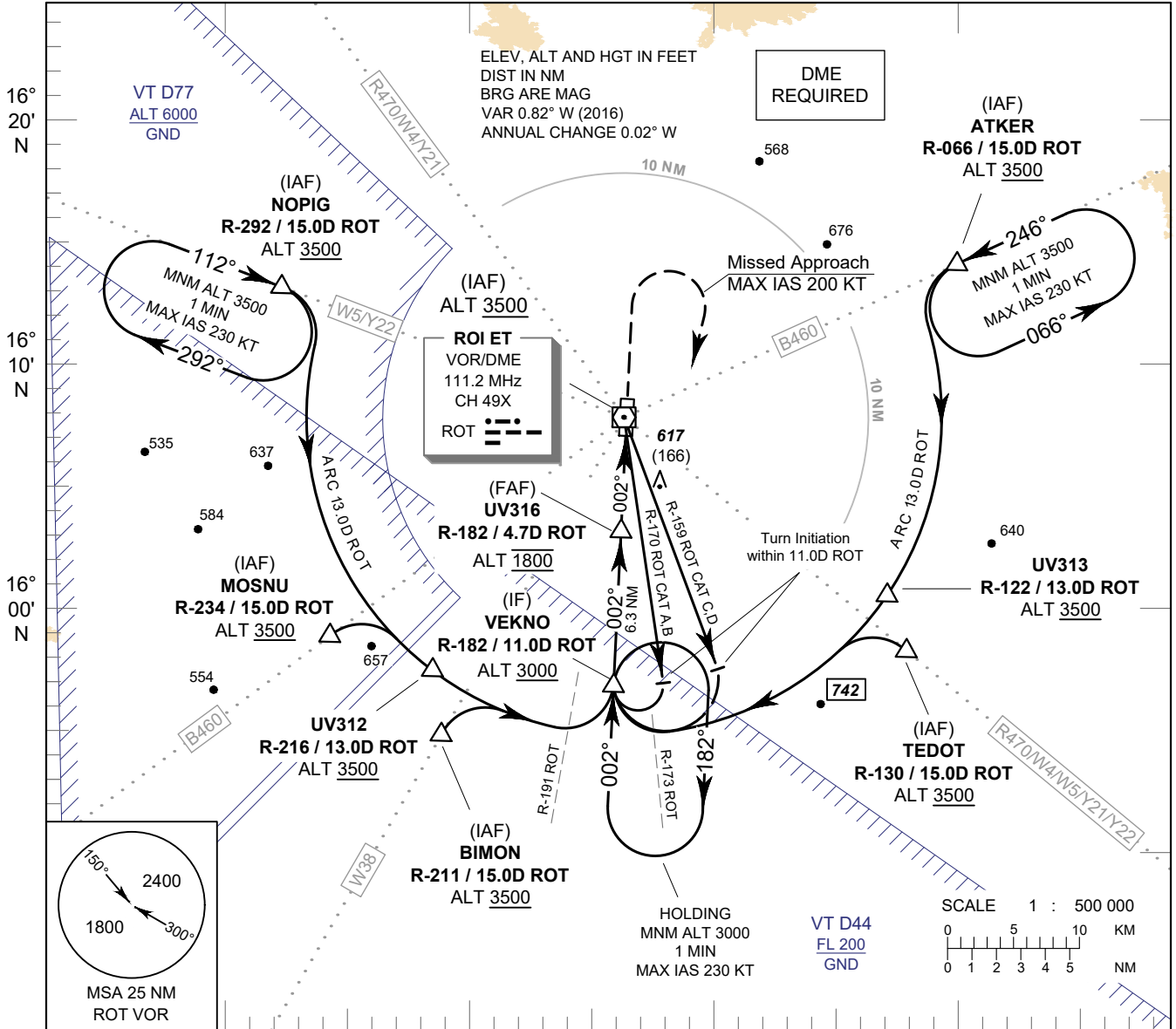
**INSTRUMENT  
APPROACH  
CHART - ICAO**

**AERODROME ELEV 451 FT  
HEIGHTS RELATED TO  
AERODROME ELEV**

APP : 125.4  
TWR : 119.75 , 236.6  
ATIS : 128.275

**ROI ET / Roi Et (VTUV)**

**VOR RWY36**



		103° 30' E	103° 40' E	103° 50' E	104° 00' E								
		(IF) VEKNO	(FAF) UV316	(MAPt)	VOR/DME ROT	<b>MISSED APPROACH :</b> No turn before MAPt. Speed restricted to <b>MAX IAS 200 KT</b> until after turn. Climb on track 002° to 1500 FT, then turn right to intercept outbound R-182 ROT VOR and proceed to VEKNO at minimum 3000 FT and hold or as directed by ATC.							
		3000 (2549)	1800 (1349)	970 (519)									
		TA 11000	1200	970									
		ELEV 451 FT (THR RWY36)											
		11.0	4.7	2.1	0.6	0	DME FM VOR/DME						
		10.4	4.1	1.5	0	0	NM FM THR						
OCA/H		A	B	C	D	Distance (ROT)	FAF	4D	3D	2.1D			
Straight - in Approach						Altitude (Height)	1800 (1349)	1575 (1124)	1260 (809)	970 (519)			
						Ground Speed	knot	70	90	100	120	140	160
Circling (OCH AAL)						Rate of Descent	ft/min	369	474	527	632	737	843

CHANGE: ROUTE Y21, Y22 ADDED.