

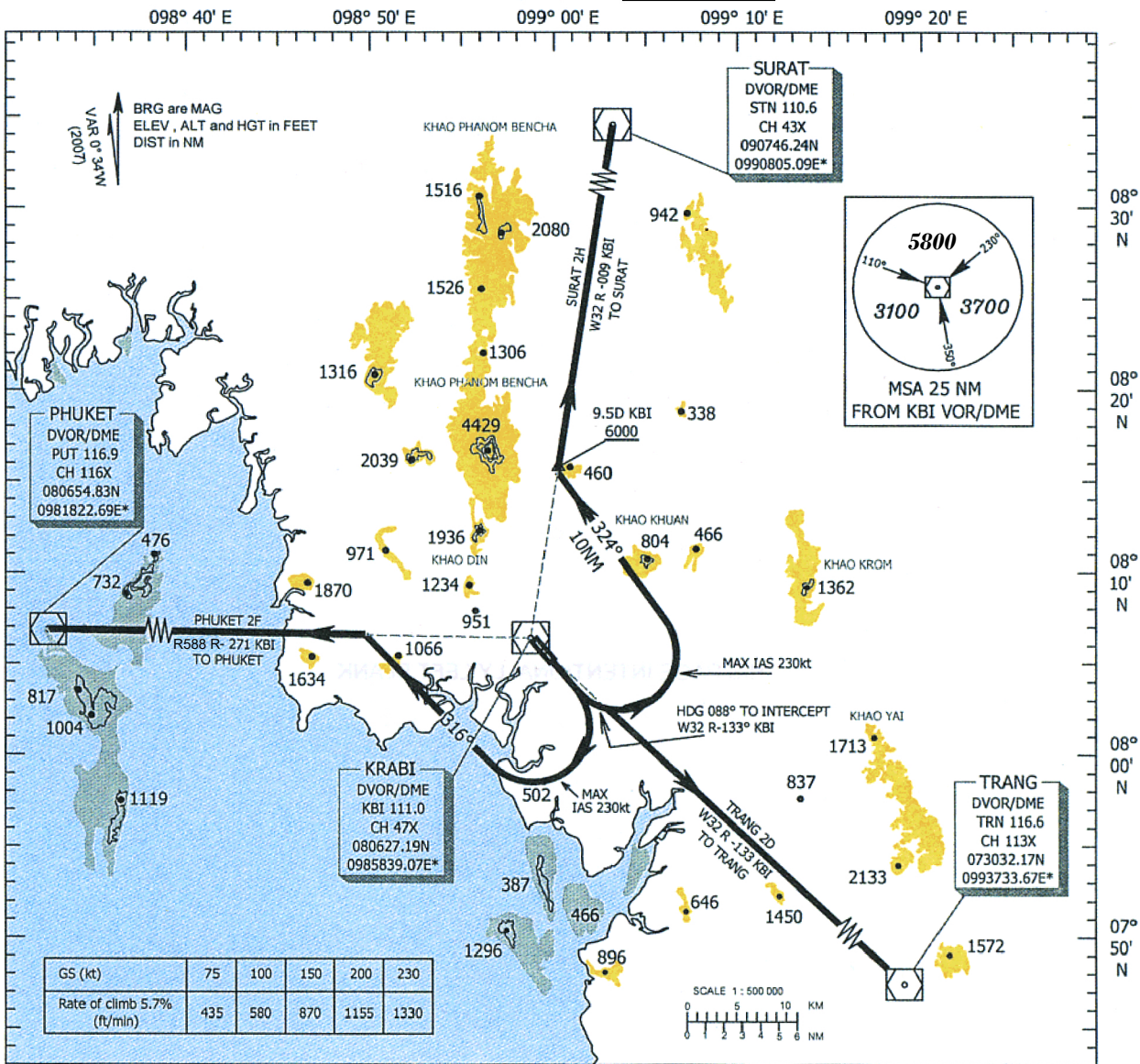
STANDARD INSTRUMENT DEPARTURE (SID)
CHART - ICAO

KRABI / Krabi (VTSG)
RWY14

TRANSITION ALTITUDE
11 000 ft

APP : 120.05
TWR : 122.5, 236.6
GND : 121.9
ATIS : 132.4

SURAT 2H DEPARTURE
TRANG 2D DEPARTURE
PHUKET 2F DEPARTURE



COMMUNICATION FAILURE PROCEDURE

- Squawk A7600
- Comply with last assigned level until next reporting point then climb to flight plan cruising level.

WARNING

- No turn before Departure End of Runway
- Min Procedure Design Gradient = 5.7 %
- Max IAS 230kt for turning after departure

SURAT TWO HOTEL :
(SURAT 2H)

Climb on runway heading until 800ft, then continue climbing turn left heading 324° to intercept and proceed along KBI R-009 outbound and maintain 6000ft or above at 9.5D KBI to SURAT DVOR/DME

TRANG TWO DELTA :
(TRANG 2D)

Climb on runway heading until 800ft, then continue climbing turn left heading 088° to intercept and proceed along KBI R-133 to TRANG DVOR/DME

PHUKET TWO FOXTROT :
(PHUKET 2F)

Climb on runway heading until 800ft, then continue climbing turn right heading 316° to intercept and proceed along KBI R-271 outbound to PHUKET DVOR/DME

CHANGE: TWR FREQUENCY, GND FREQUENCY ADDED. ATIS FREQUENCY ADDED. R588 ADDED. CANCEL W13.