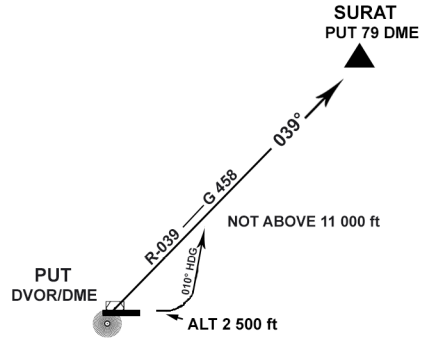


STANDARD INSTRUMENT DEPARTURE RUNWAY 09

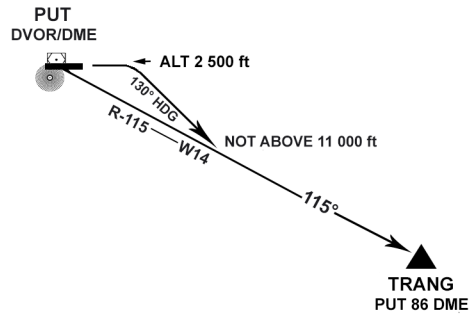
**SURAT ONE ALFA (STN 1 A)**

Departure gradient 4.3 % Take off, climb runway heading until 2 500 ft or above. Then turn left heading 010° to intercept and proceed on PUT R-039 not above 11 000 ft. Expect radar control. Contact Phuket Approach on 124.7, 284.0 MHz after take-off.



**TRANG ONE ALFA (TRN 1 A)**

Departure gradient 4.3 % Take off, climb runway heading until 2 500 ft or above. Then turn right heading 130° to intercept and proceed on PUT R-115 not above 11 000 ft. Expect radar control. Contact Phuket Approach on 124.7, 284.0 MHz after take-off.



**UTHAI ONE ALFA (UTHAI 1 A)**

Departure gradient 4.3 % Take off, climb runway heading until 2 500 ft or above. Then turn right heading 160° to intercept and proceed on PUT R-134 not above 11 000 ft. Expect radar control. Contact Phuket Approach on 124.7, 284.0 MHz after take-off.

