

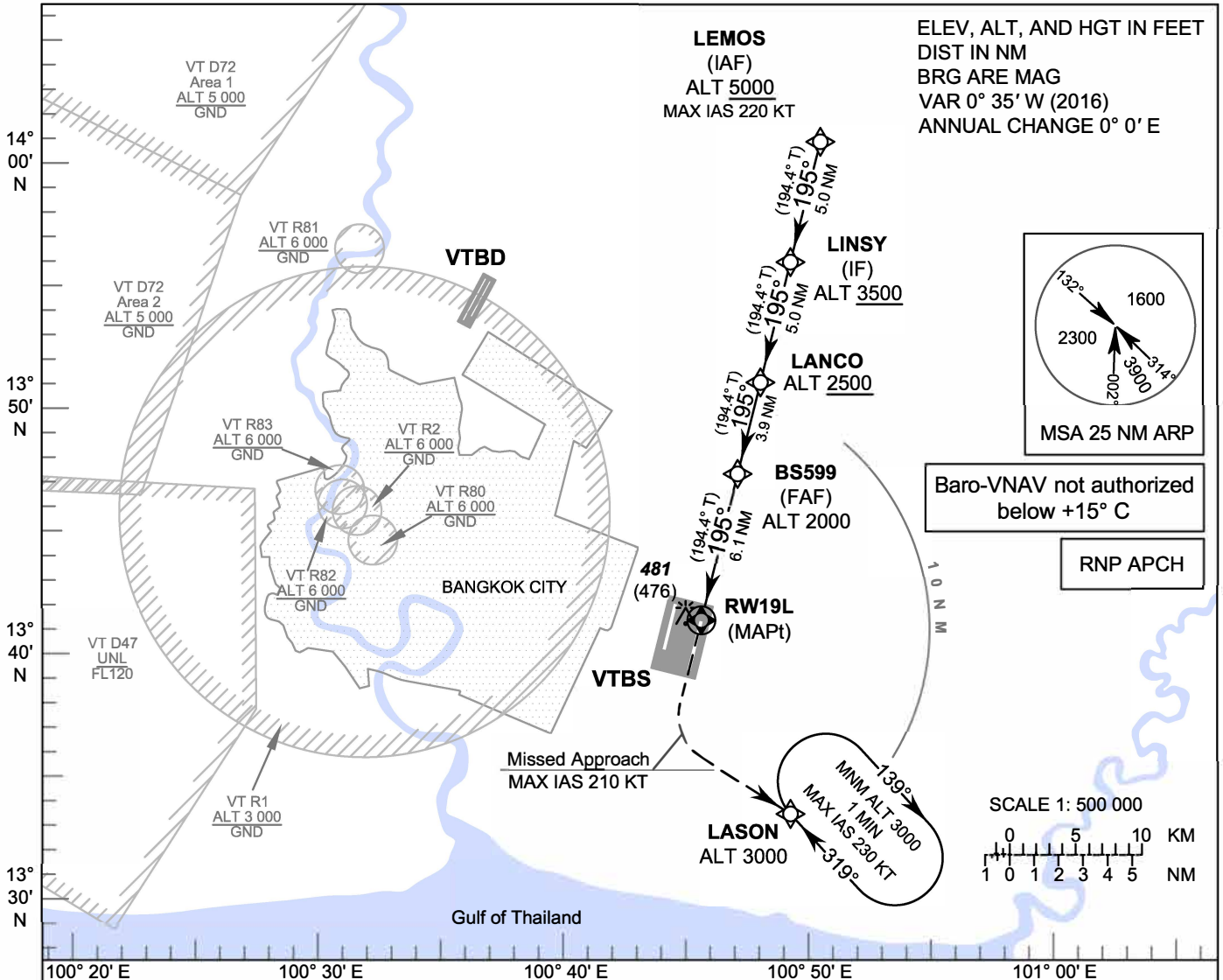
**INSTRUMENT
APPROACH
CHART - ICAO**

**AERODROME ELEV 5 FT
HEIGHTS RELATED TO
THR RWY19L - ELEV 5 FT**

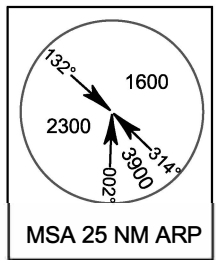
APP	: 119.1, 262.5
	: 120.3, 262.5
	: 133.4, 262.5
	: 122.35, 262.5
	: 124.35, 262.5
	: 125.2, 262.5
ARR	: 121.1
	: 126.3
TWR	: 118.2, 274.5
	: 119.0
ARR ATIS	: 133.6, 278.6

BANGKOK / Suvarnabhumi Intl (VTBS)

RNP RWY19L

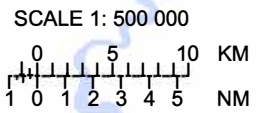


ELEV, ALT, AND HGT IN FEET
DIST IN NM
BRG ARE MAG
VAR 0° 35' W (2016)
ANNUAL CHANGE 0° 0' E

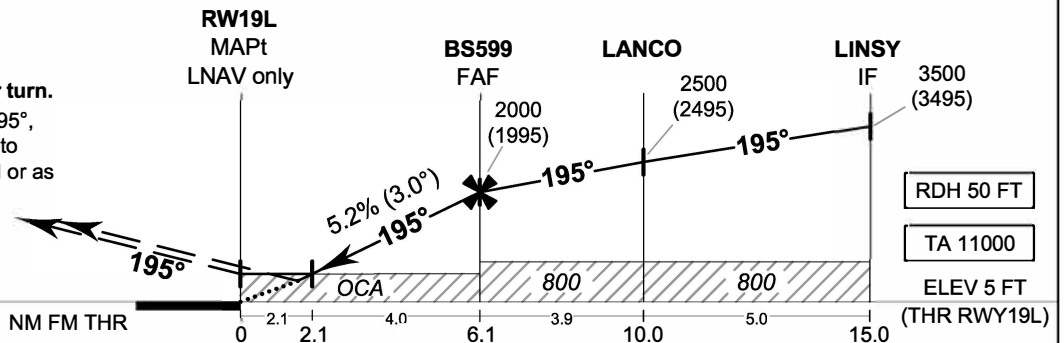


Baro-VNAV not authorized
below +15° C

RNP APCH



MISSED APPROACH:
No turn before MAPt.
Speed restricted to
MAX IAS 210 KT until after turn.
Climb to 1500 FT on track 195°,
then climbing left turn direct to
LASON at 3000 FT and hold or as
directed by ATC.
(If unable to reach 3000 FT
at LASON, continue climb
in the holding pattern.)



RDH 50 FT
TA 11000
ELEV 5 FT
(THR RWY19L)

CHANGE: APP FREQUENCY.

OCA/H	A	B	C	D	NM to NEXT WPT	2.1 NM	3 NM	4 NM	5 NM	6 NM	FAF	
LNAV / VNAV	600 (595)				Altitude (Height)	730 (725)	1005 (1000)	1320 (1315)	1635 (1630)	1950 (1945)	2000 (1995)	
LNAV	730 (725)				Ground speed	knot	70	90	100	120	140	160
Circling (OCH AAL)	800 (795)		900 (895)		Rate of descent FAF-MAPt 5.2%	ft/min	369	474	527	632	737	843