

**STANDARD DEPARTURE CHART - INSTRUMENT (SID) - ICAO**

TRANSITION ALTITUDE  
11000 FT

**SPEED RESTRICTION**  
MAX IAS 250 KT AT OR BELOW ALT 10000 FT UNLESS OTHERWISE AUTHORIZED BY ATC.

APP : 119.1, 262.5  
: 120.3, 262.5  
: 133.4, 262.5  
: 122.35, 262.5  
: 124.35, 262.5  
: 125.2, 262.5

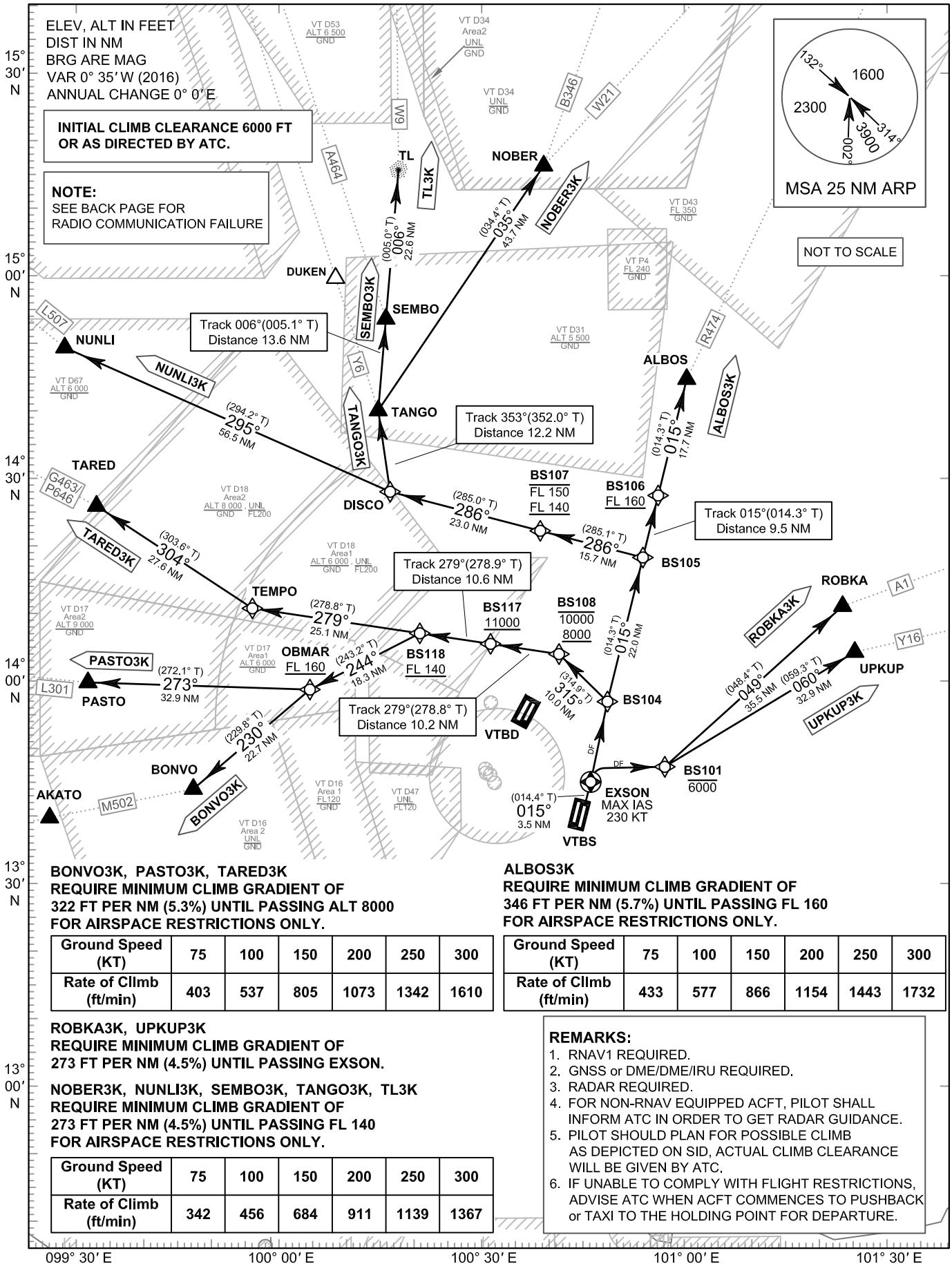
ARR : 121.1  
: 126.3

TWR : 118.2, 274.5  
: 119.0

DEP ATIS : 127.65

**BANGKOK/Suvarnabhumi Intl (VTBS)  
RNAV RWY01R**

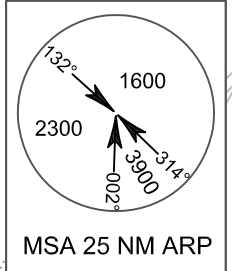
ALBOS3K BONVO3K  
NOBER3K NUNLI3K PASTO3K  
ROBKA3K SEMBO3K TANGO3K  
TARED3K TL3K UPKUP3K



ELEV, ALT IN FEET  
DIST IN NM  
BRG ARE MAG  
VAR 0° 35' W (2016)  
ANNUAL CHANGE 0° 0' E

**INITIAL CLIMB CLEARANCE 6000 FT OR AS DIRECTED BY ATC.**

**NOTE:**  
SEE BACK PAGE FOR RADIO COMMUNICATION FAILURE



NOT TO SCALE

**BONVO3K, PASTO3K, TARED3K**  
REQUIRE MINIMUM CLIMB GRADIENT OF 322 FT PER NM (5.3%) UNTIL PASSING ALT 8000 FOR AIRSPACE RESTRICTIONS ONLY.

Ground Speed (KT)	75	100	150	200	250	300
Rate of Climb (ft/min)	403	537	805	1073	1342	1610

**ALBOS3K**  
REQUIRE MINIMUM CLIMB GRADIENT OF 346 FT PER NM (5.7%) UNTIL PASSING FL 160 FOR AIRSPACE RESTRICTIONS ONLY.

Ground Speed (KT)	75	100	150	200	250	300
Rate of Climb (ft/min)	433	577	866	1154	1443	1732

**ROBKA3K, UPKUP3K**  
REQUIRE MINIMUM CLIMB GRADIENT OF 273 FT PER NM (4.5%) UNTIL PASSING EXSON.

**NOBER3K, NUNLI3K, SEMBO3K, TANGO3K, TL3K**  
REQUIRE MINIMUM CLIMB GRADIENT OF 273 FT PER NM (4.5%) UNTIL PASSING FL 140 FOR AIRSPACE RESTRICTIONS ONLY.

Ground Speed (KT)	75	100	150	200	250	300
Rate of Climb (ft/min)	342	456	684	911	1139	1367

**REMARKS:**

- RNAV1 REQUIRED.
- GNSS or DME/DME/IRU REQUIRED.
- RADAR REQUIRED.
- FOR NON-RNAV EQUIPPED ACFT, PILOT SHALL INFORM ATC IN ORDER TO GET RADAR GUIDANCE.
- PILOT SHOULD PLAN FOR POSSIBLE CLIMB AS DEPICTED ON SID, ACTUAL CLIMB CLEARANCE WILL BE GIVEN BY ATC.
- IF UNABLE TO COMPLY WITH FLIGHT RESTRICTIONS, ADVISE ATC WHEN ACFT COMMENCES TO PUSHBACK or TAXI TO THE HOLDING POINT FOR DEPARTURE.

CHANGE: APP FREQUENCY.

099° 30' E      100° 00' E      100° 30' E      101° 00' E      101° 30' E