

STANDARD DEPARTURE CHART - INSTRUMENT (SID) - ICAO

TRANSITION ALTITUDE
11000 FT

SPEED RESTRICTION
MAX IAS 250 KT AT OR BELOW ALT 10000 FT UNLESS OTHERWISE AUTHORIZED BY ATC.

APP : 119.1, 262.5
: 120.3, 262.5
: 133.4, 262.5
: 122.35, 262.5
: 124.35, 262.5
: 125.2, 262.5

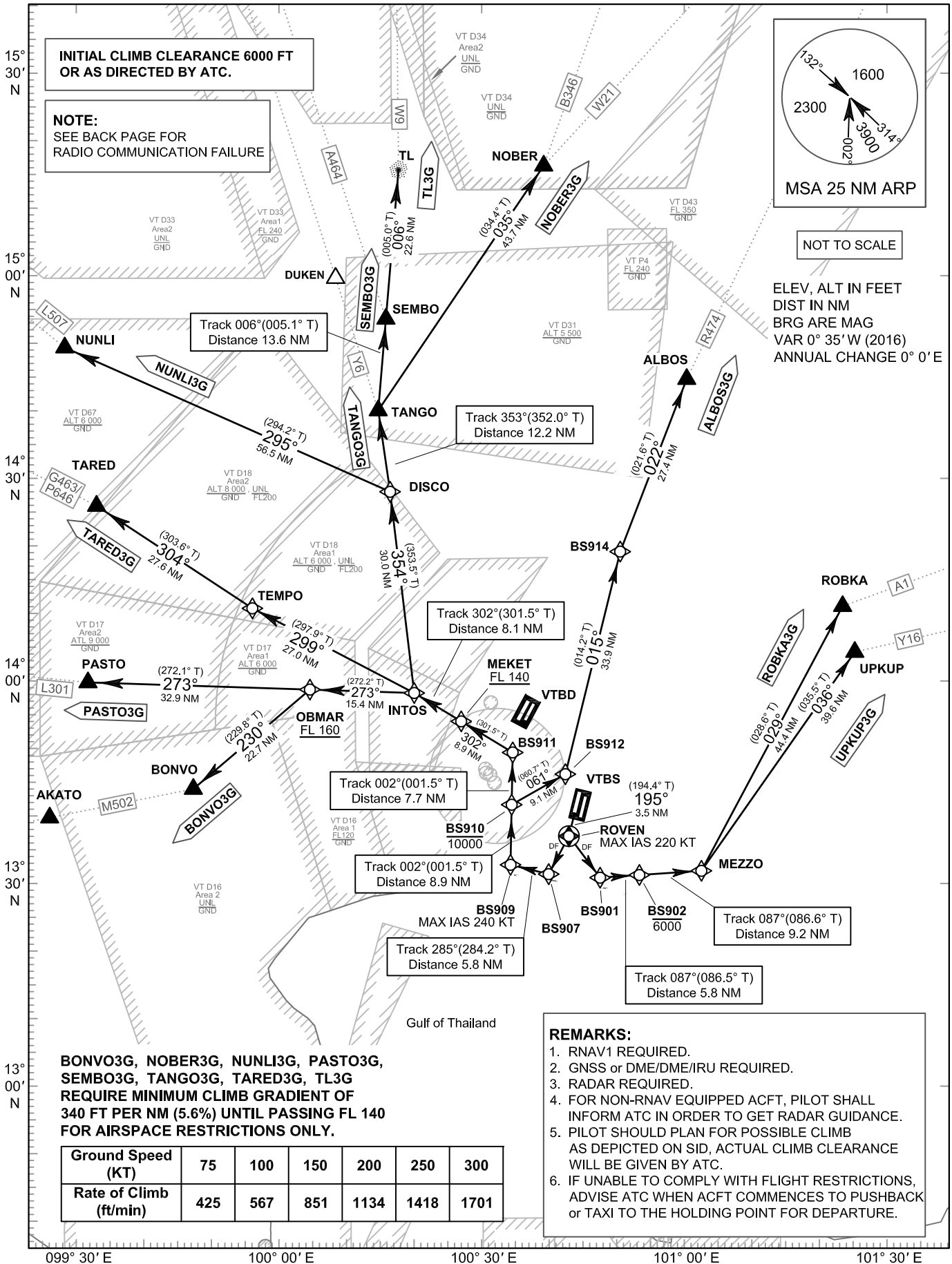
ARR : 121.1
: 126.3

TWR : 118.2, 274.5
: 119.0

DEP ATIS : 127.65

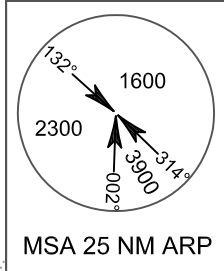
**BANGKOK/Suvarnabhumi Intl (VTBS)
RNAV RWY19R**

ALBOS3G BONVO3G
NOBER3G NUNLI3G PASTO3G
ROBKA3G SEMBO3G TANGO3G
TARED3G TL3G UPKUP3G



INITIAL CLIMB CLEARANCE 6000 FT OR AS DIRECTED BY ATC.

NOTE:
SEE BACK PAGE FOR RADIO COMMUNICATION FAILURE



NOT TO SCALE

ELEV, ALT IN FEET
DIST IN NM
BRG ARE MAG
VAR 0° 35' W (2016)
ANNUAL CHANGE 0° 0' E

BONVO3G, NOBER3G, NUNLI3G, PASTO3G, SEMBO3G, TANGO3G, TARED3G, TL3G REQUIRE MINIMUM CLIMB GRADIENT OF 340 FT PER NM (5.6%) UNTIL PASSING FL 140 FOR AIRSPACE RESTRICTIONS ONLY.

Ground Speed (KT)	75	100	150	200	250	300
Rate of Climb (ft/min)	425	567	851	1134	1418	1701

REMARKS:

- RNAV1 REQUIRED.
- GNSS or DME/DME/IRU REQUIRED.
- RADAR REQUIRED.
- FOR NON-RNAV EQUIPPED ACFT, PILOT SHALL INFORM ATC IN ORDER TO GET RADAR GUIDANCE.
- PILOT SHOULD PLAN FOR POSSIBLE CLIMB AS DEPICTED ON SID, ACTUAL CLIMB CLEARANCE WILL BE GIVEN BY ATC.
- IF UNABLE TO COMPLY WITH FLIGHT RESTRICTIONS, ADVISE ATC WHEN ACFT COMMENCES TO PUSHBACK OR TAXI TO THE HOLDING POINT FOR DEPARTURE.

CHANGE: APP FREQUENCY.