

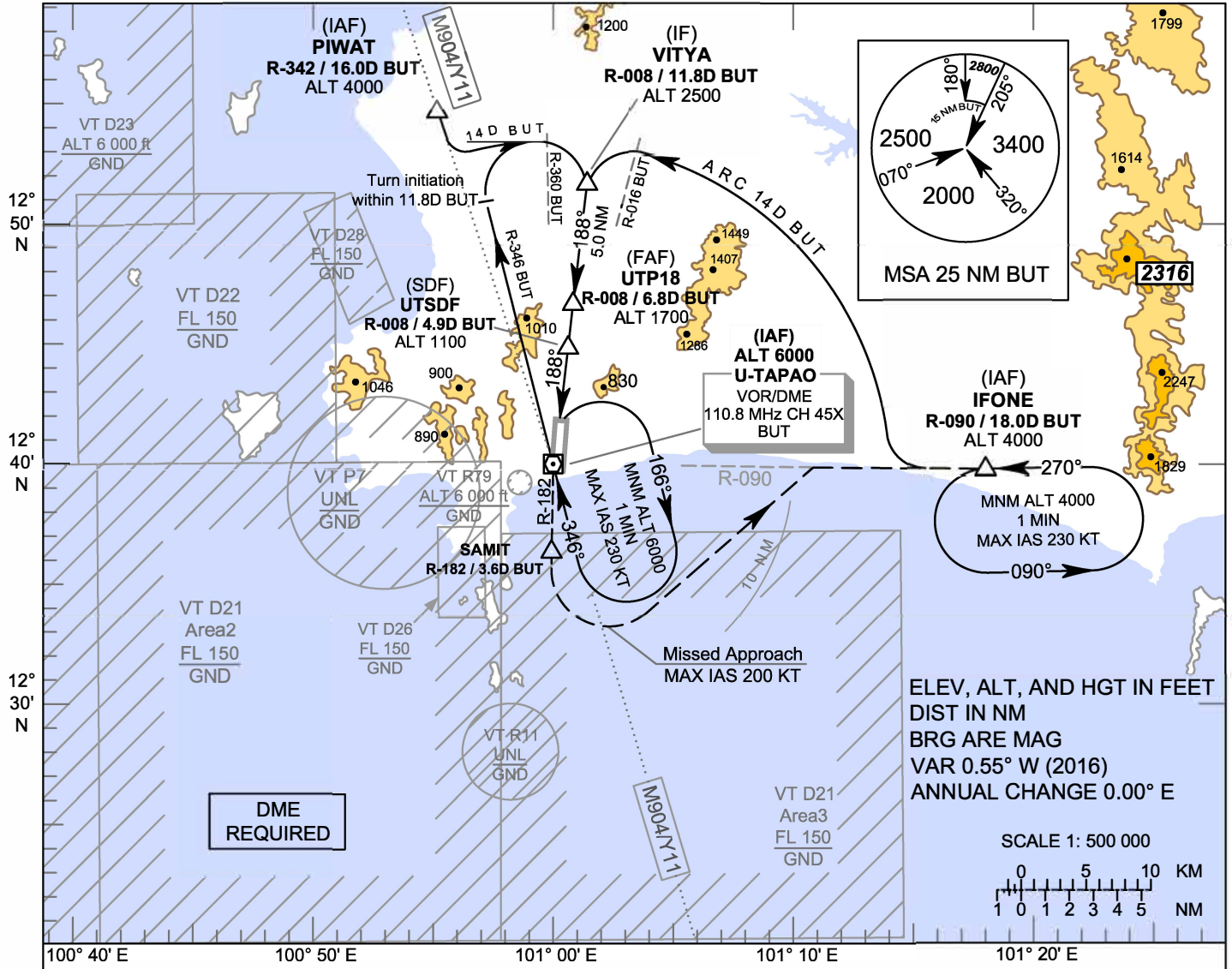
**INSTRUMENT
APPROACH
CHART - ICAO**

**AERODROME ELEV 59 FT
HEIGHTS RELATED TO
AERODROME ELEV**

APP : 119.7 , 134.5
238.3 , 273.3
TWR : 118.3 , 227.0
GND : 121.9 , 275.8
ATIS : 127.2

**RAYONG / U-TAPAO RAYONG
PATTAYA INTL (VTBU)**

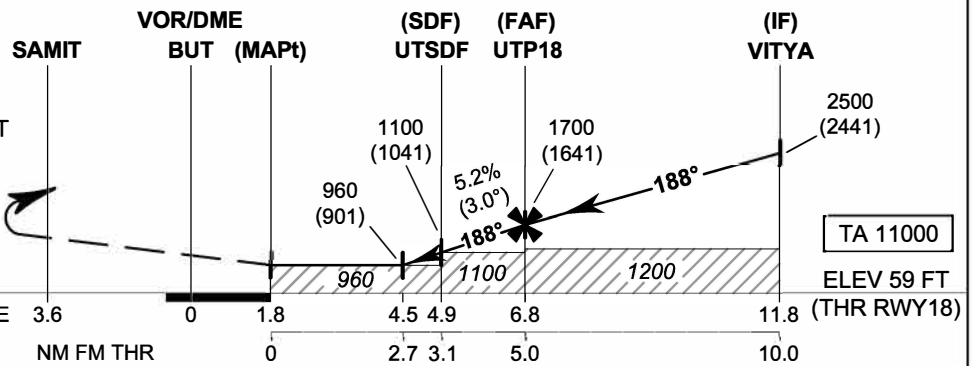
VOR RWY18



CAUTION: Aircraft shall avoid entering VT R11

MISSED APPROACH:
No turn before MAPt.
Speed restricted to
MAX IAS 200 KT until after turn.

Climb to intercept outbound R-182 BUT
VOR to SAMIT. After SAMIT and ALT
passing 1500 FT, turn left to intercept
outbound R-090 BUT VOR, then
proceed to IFONE and hold
or as directed by ATC



	DME FM VOR/DME				NM FM THR				Distance (BUT)	Altitude (Height)	Ground speed	Rate of descent			
	A	B	C	D	0	1.8	4.5	4.9					6.8	11.8	
OCA/H	A	B	C	D					4.5 D	5 D	6 D	FAF			
Straight-in Approach	960 (901)								960 (901)	1120 (1061)	1435 (1376)	1700 (1641)			
									knot	70	90	100	120	140	160
Circling (OCH AAL)	1200 (1141)		1450 (1391)						(ft/min)	369	474	527	632	737	843

CHANGE: TOWER FREQUENCY.