

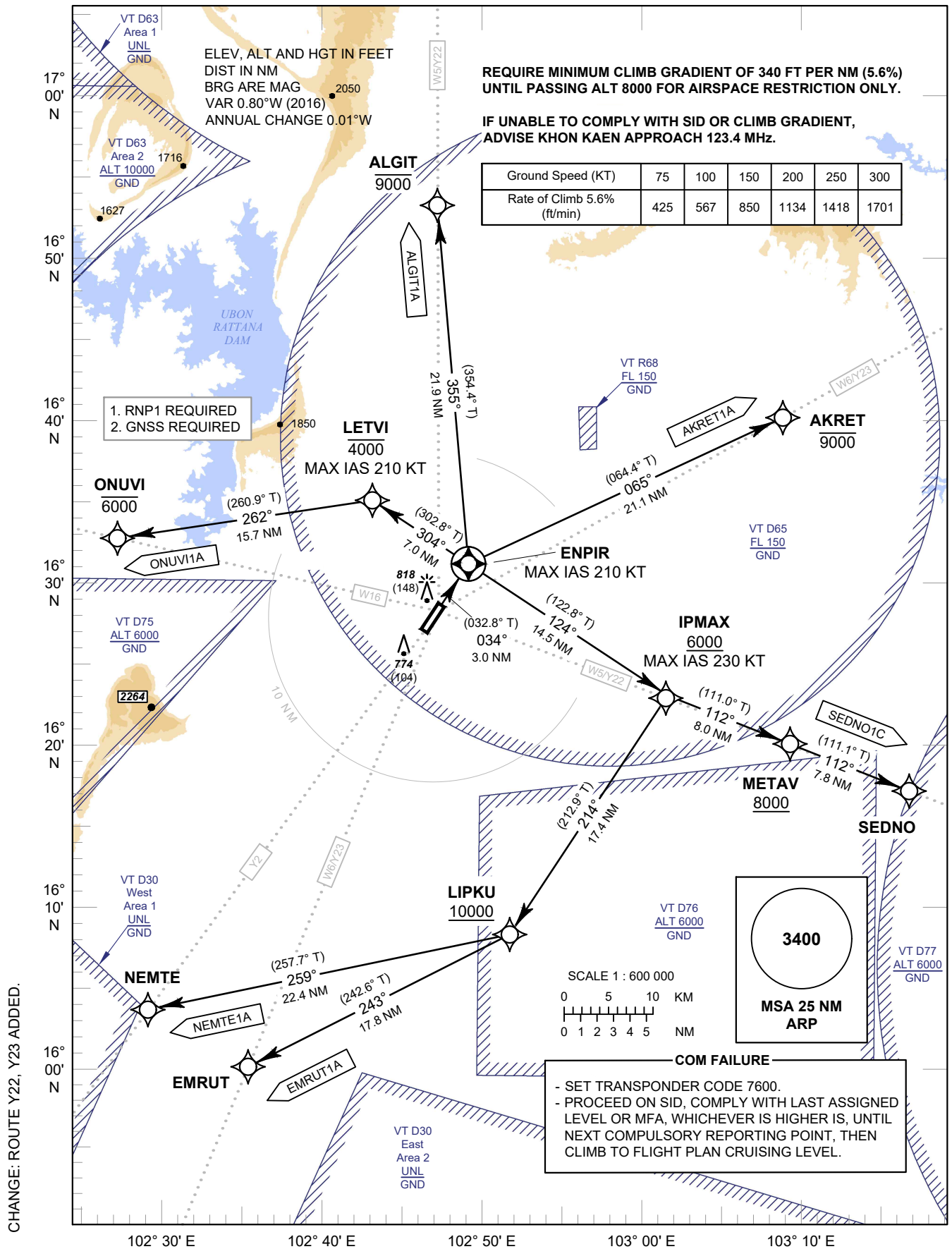
**STANDARD DEPARTURE CHART -  
INSTRUMENT (SID) - ICAO**

TRANSITION ALTITUDE  
11000 FT

APP : 123.4 , 240.0  
TWR : 122.25 , 236.6  
GND : 121.9  
ATIS : 126.85

**KHON KAEN /  
Khon Kaen (VTUK)  
RNAV RWY03**

AKRET1A ALGIT1A EMRUT1A  
NEMTE1A ONUVI1A SEDNO1C



Ground Speed (KT)	75	100	150	200	250	300
Rate of Climb 5.6% (ft/min)	425	567	850	1134	1418	1701

CHANGE: ROUTE Y22, Y23 ADDED.