

# STANDARD DEPARTURE CHART - INSTRUMENT (SID) - ICAO

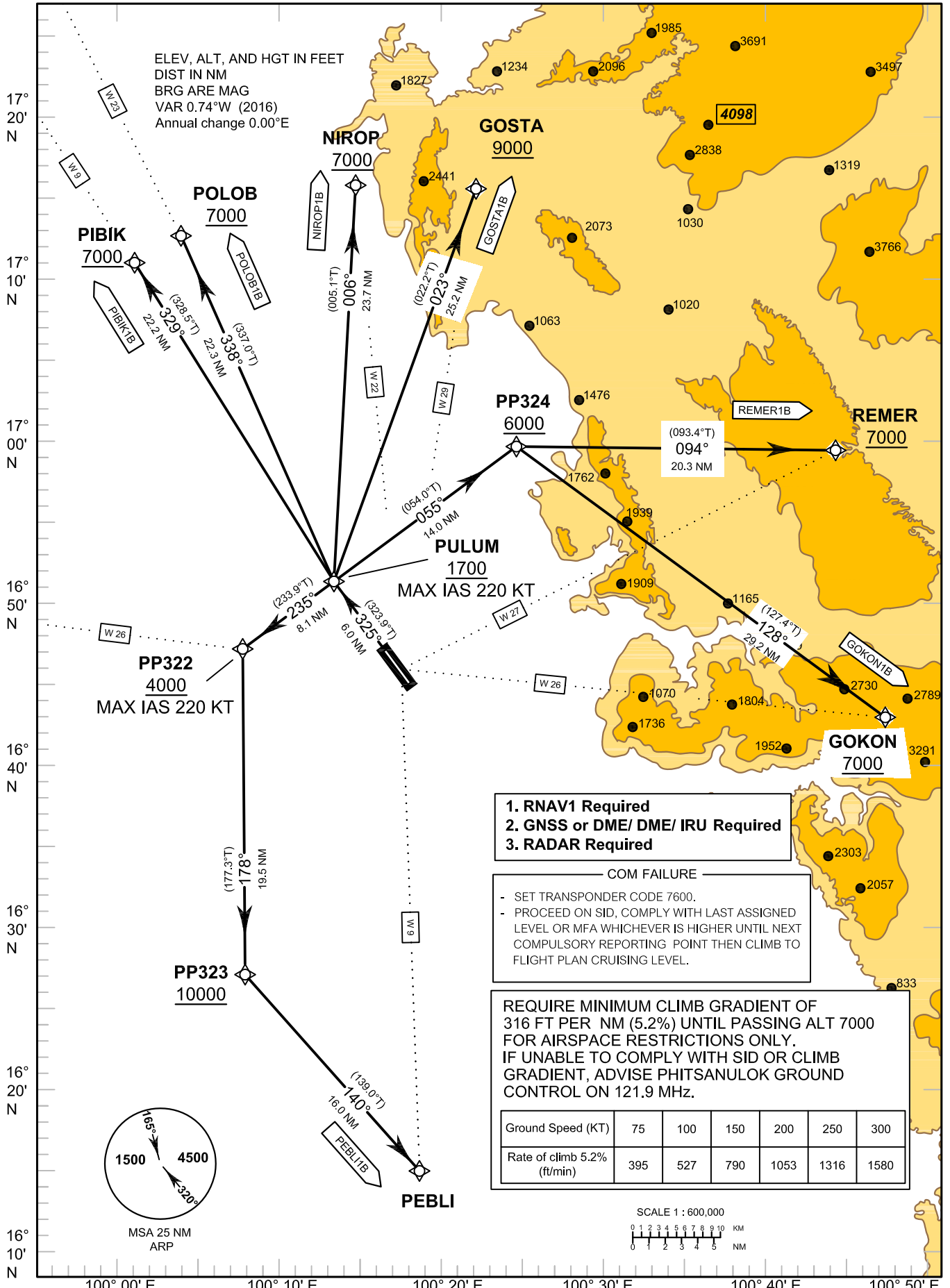
TRANSITION ALTITUDE  
11000

APP : 120.7, 284.0  
TWR : 118.9, 236.6  
GND : 121.9

PHITSANULOK/Phitsanulok (VTPP)  
RNAV RWY32

GOKON1B GOSTA1B NIROP1B  
PEBLI1B PIBIK1B POLOB1B REMER1B

ELEV, ALT, AND HGT IN FEET  
DIST IN NM  
BRG ARE MAG  
VAR 0.74°W (2016)  
Annual change 0.00°E



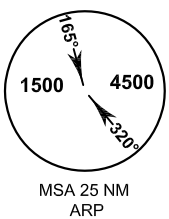
1. RNAV1 Required
2. GNSS or DME/ DME/ IRU Required
3. RADAR Required

COM FAILURE

- SET TRANSPONDER CODE 7600.
- PROCEED ON SID, COMPLY WITH LAST ASSIGNED LEVEL OR MFA WHICHEVER IS HIGHER UNTIL NEXT COMPULSORY REPORTING POINT THEN CLIMB TO FLIGHT PLAN CRUISING LEVEL.

REQUIRE MINIMUM CLIMB GRADIENT OF 316 FT PER NM (5.2%) UNTIL PASSING ALT 7000 FOR AIRSPACE RESTRICTIONS ONLY. IF UNABLE TO COMPLY WITH SID OR CLIMB GRADIENT, ADVISE PHITSANULOK GROUND CONTROL ON 121.9 MHz.

Ground Speed (KT)	75	100	150	200	250	300
Rate of climb 5.2% (ft/min)	395	527	790	1053	1316	1580



SCALE 1 : 600,000



CHANGE: NEW CHART.