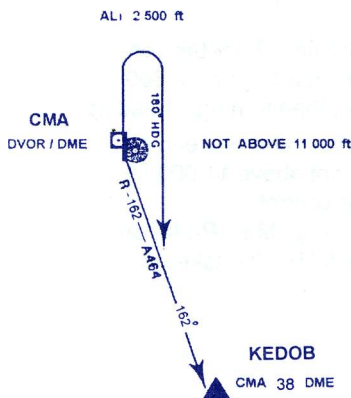


STANDARD INSTRUMENT DEPARTURE RUNWAY 36

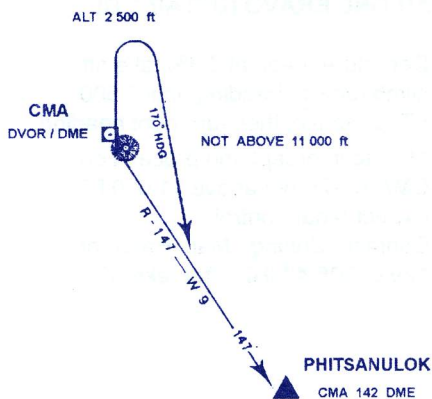
**KEDOB ONE BRAVO (KEDOB 1 B)**

Departure gradient 3.3% take off, climb runway heading until 2 500 FT, or above, then turn right heading 180° to intercept and proceed on CMA R-162 not above 11 000 FT. Expect radar control. Contact Chiang Mai Radar on 129.6, 305.4 MHZ after take-off.



**PHITSANULOK ONE BRAVO (PSL 1 B)**

Departure gradient 3.3% take off, climb runway heading until 2 500 FT, or above, then turn right heading 170° to intercept and proceed on CMA R-147 not above 11 000 FT. Expect radar control. Contact Chiang Mai Radar on 129.6, 305.4 MHZ after take-off.



**MAE HONG SON ONE BRAVO (MHS 1 B)**

Departure gradient 3.3% take off, climb runway heading until 2 500 FT, or above, then turn right heading 180° to cross CMA R-130 not below 6 500 FT turn right heading 310° to intercept and proceed on CMA R-147 not above 11 000 FT. Expect radar control. Contact Chiang Mai Radar on 129.6, 305.4 MHZ after take-off.

