

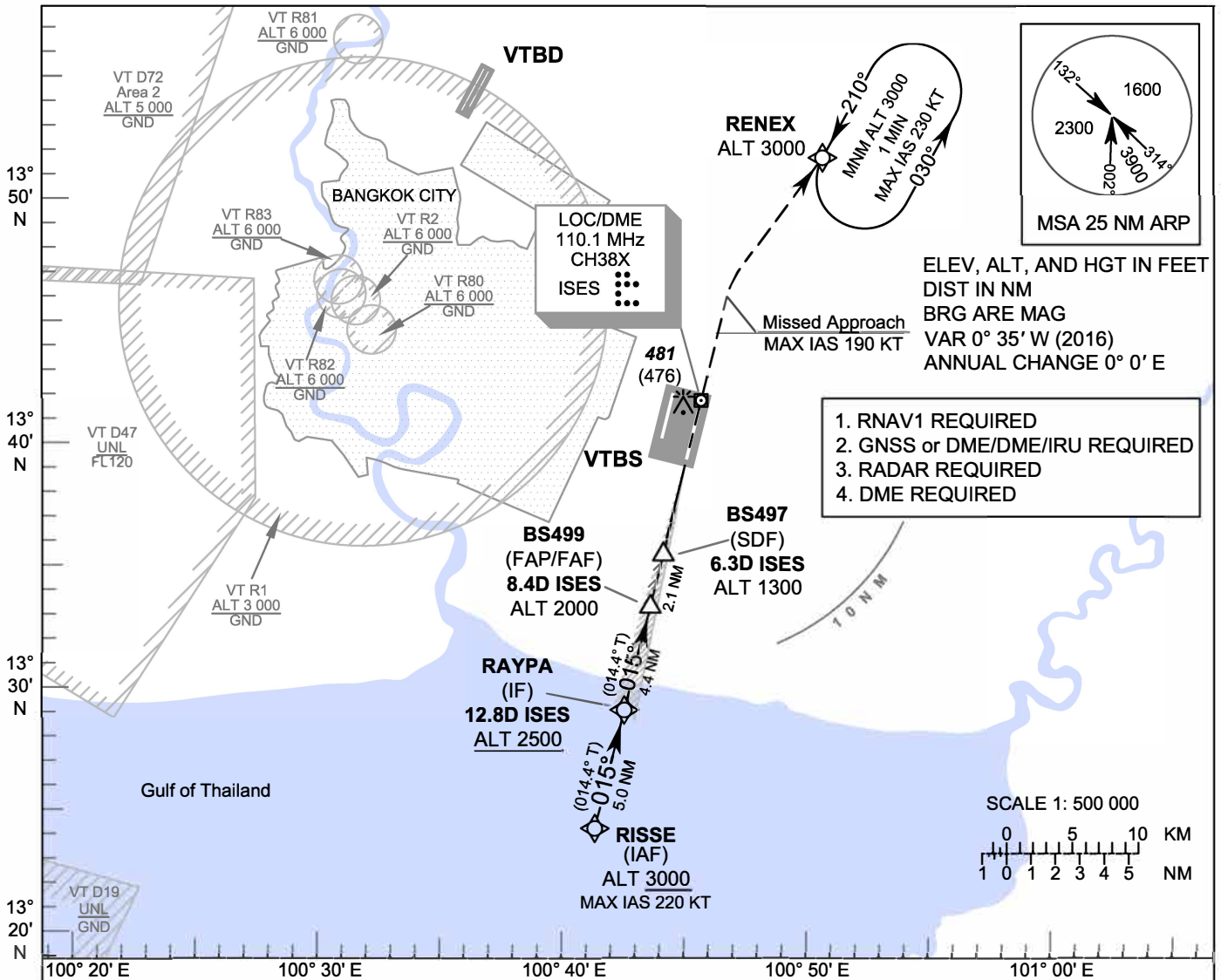
**INSTRUMENT
APPROACH
CHART - ICAO**

**AERODROME ELEV 5 FT
HEIGHTS RELATED TO
THR RWY01R - ELEV 5 FT**

APP	: 119.1, 262.5
	: 120.3, 262.5
	: 133.4, 262.5
	: 122.35, 262.5
	: 124.35, 262.5
	: 125.2, 262.5
ARR	: 121.1
	: 126.3
TWR	: 118.2, 274.5
	: 119.0
ARR ATIS	: 133.6, 278.6

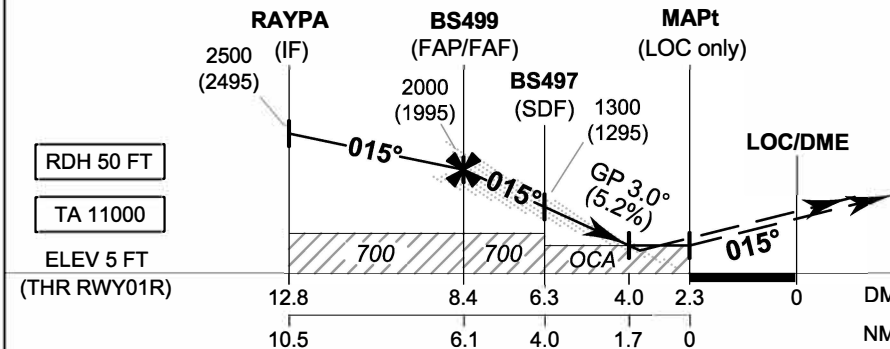
BANGKOK / Suvarnabhumi Intl (VTBS)

**ILS or LOC z RWY01R
CAT II**



1. RNAV1 REQUIRED
2. GNSS or DME/DME/IRU REQUIRED
3. RADAR REQUIRED
4. DME REQUIRED

MISSED APPROACH:
No turn before MAPt (for LOC only).
Speed restricted to
MAX IAS 190 KT until after turn.
Climb to 1000 FT on track 015°, then climbing right turn direct to RENEX at 3000 FT and hold or as directed by ATC.
(If unable to reach 3000 FT at RENEX, continue climb in the holding pattern.)



OCA/H		A	B	C	D	GS OUT	Distance (ISES)	FAF	8 D	7 D	6 D	5 D	4 D							
Straight-in Approach	CAT I	205 (200)					Altitude (Height)	2000	1855	1540	1225	910	600	Ground speed	knot	70	90	100	120	140
	CAT II	105 (100)				1995		1850	1535	1220	905	595	Rate of descent (5.2%)		ft/min	369	474	527	632	737
LOC only		600 (595)																		
Circling (OCH AAL)		800 (795)	900 (895)																	

CHANGE: APP FREQUENCY.