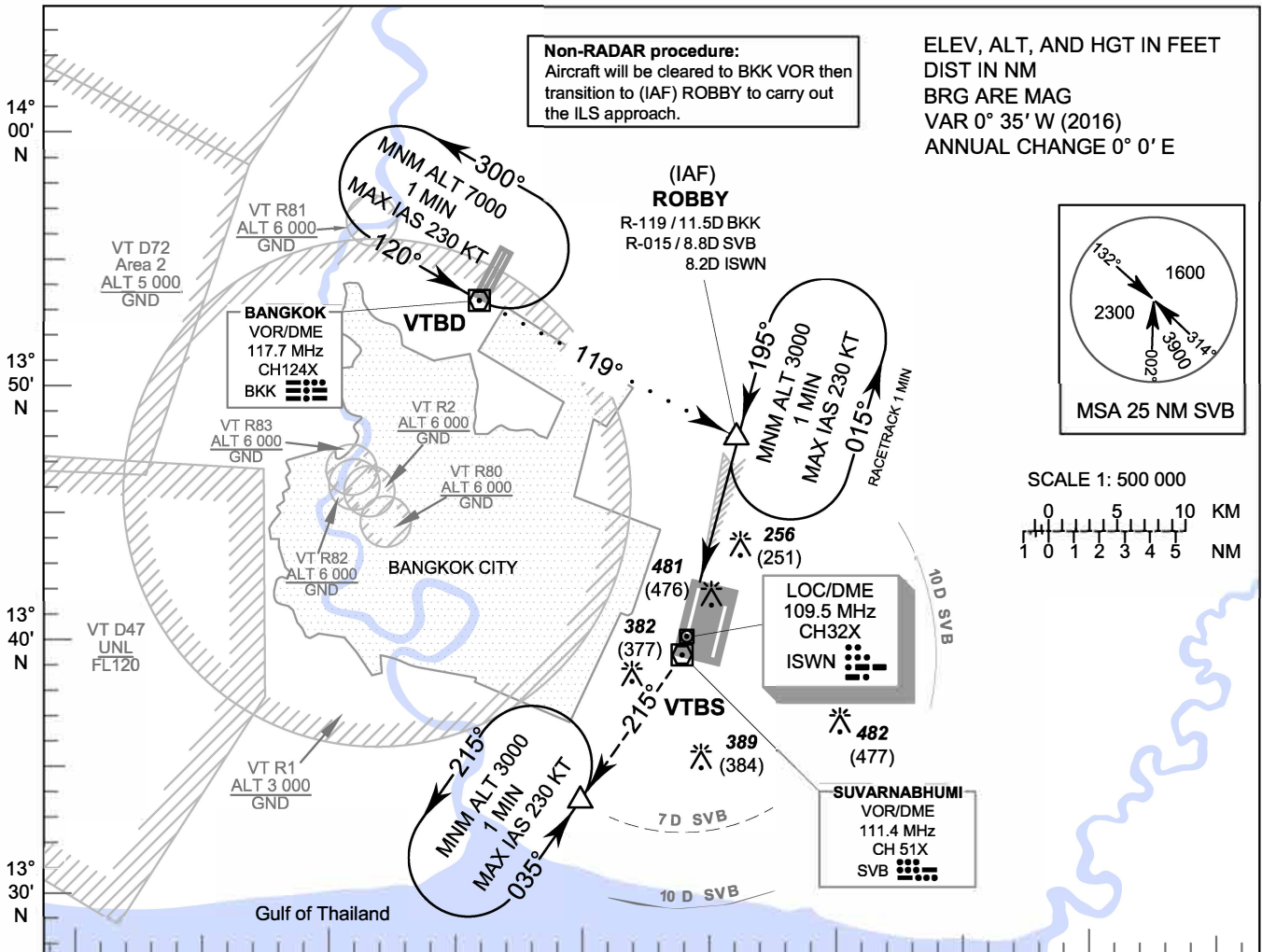


INSTRUMENT APPROACH CHART - ICAO **AERODROME ELEV 5 FT**
HEIGHTS RELATED TO THR RWY19R - ELEV 5 FT

APP	: 119.1, 262.5
	: 120.3, 262.5
	: 133.4, 262.5
	: 122.35, 262.5
	: 124.35, 262.5
	: 125.2, 262.5
ARR	: 121.1
	: 126.3
TWR	: 118.2, 274.5
	: 119.0
ARR ATIS	: 133.6, 278.6

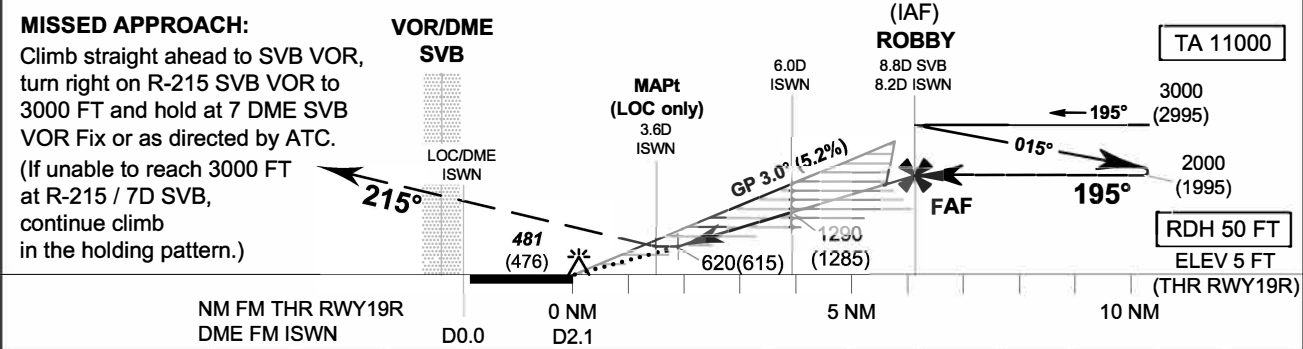
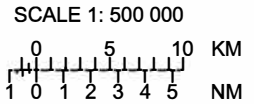
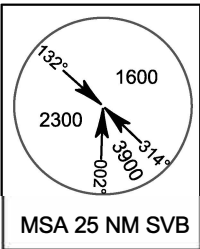
BANGKOK / Suvarnabhumi Intl (VTBS)

ILS or LOC y RWY19R
CAT II



Non-RADAR procedure:
Aircraft will be cleared to BKK VOR then transition to (IAF) ROB to carry out the ILS approach.

ELEV, ALT, AND HGT IN FEET
DIST IN NM
BRG ARE MAG
VAR 0° 35' W (2016)
ANNUAL CHANGE 0° 0' E



	NM FM THR RWY19R				ISWN DME	MAPt	4.0	5.0	6.0	7.0	8.0	FAF
	A	B	C	D								
Straight-in Approach	DME FM ISWN				Altitudes	Speed / Knots	2 : 45	2 : 18	1 : 58	1 : 43	1 : 32	
	CAT I	205 (200)										
LOC only	620 (615)			FAF - MAPt 4.6 NM				530	640	745	850	955
Circling (OCH AAL)	800 (795)		900 (895)		Rate of descent (ft/min)		530	640	745	850	955	

CHANGE: APP FREQUENCY.