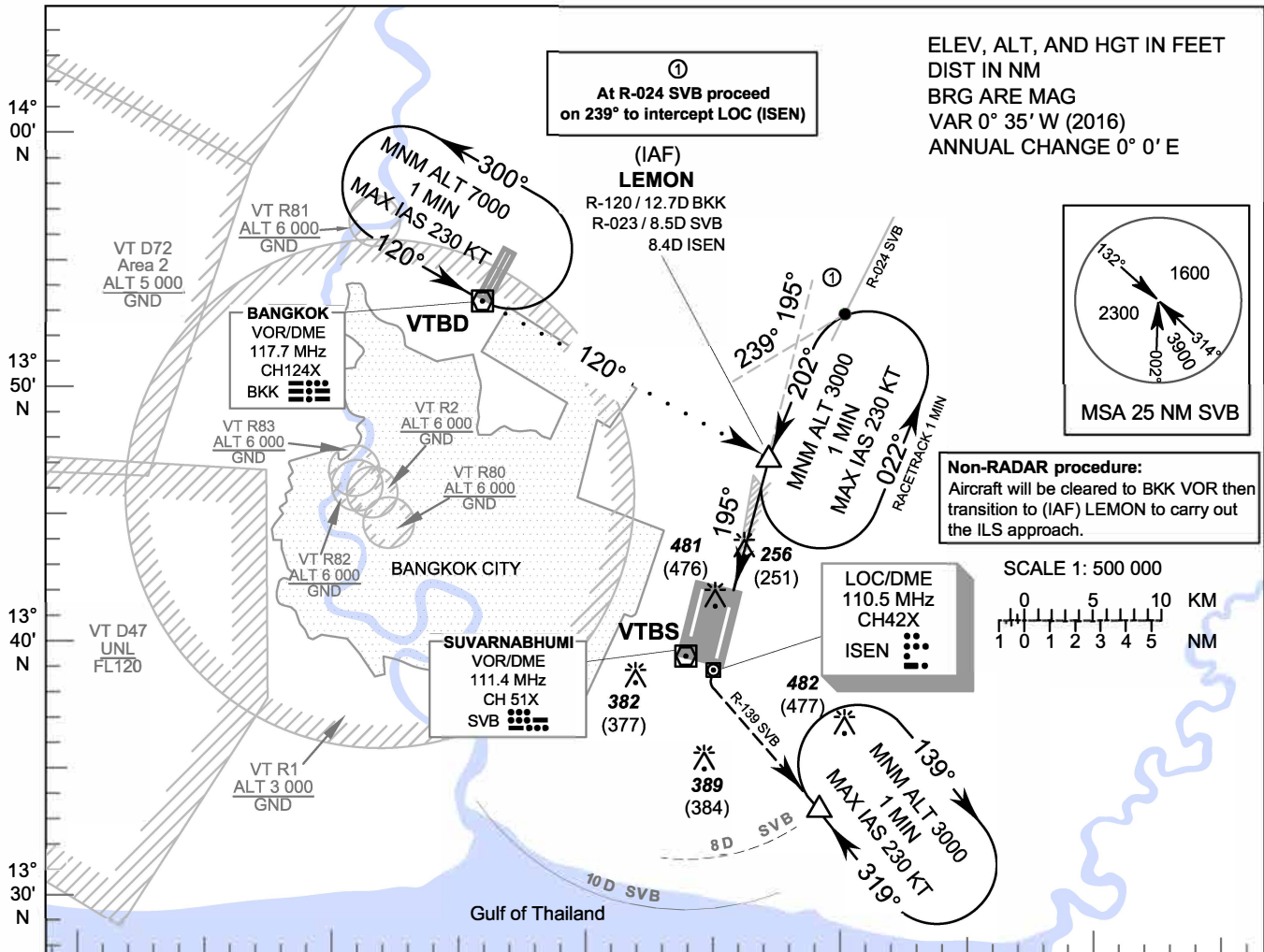


**INSTRUMENT APPROACH CHART - ICAO**      **AERODROME ELEV 5 FT HEIGHTS RELATED TO THR RWY19L - ELEV 5 FT**

APP	: 119.1, 262.5
	: 120.3, 262.5
	: 133.4, 262.5
	: 122.35, 262.5
	: 124.35, 262.5
	: 125.2, 262.5
ARR	: 121.1
	: 126.3
TWR	: 118.2, 274.5
	: 119.0
ARR ATIS	: 133.6, 278.6

**BANGKOK / Suvarnabhumi Intl (VTBS)**

**ILS or LOC y RWY19L CAT II**



ELEV, ALT, AND HGT IN FEET  
DIST IN NM  
BRG ARE MAG  
VAR 0° 35' W (2016)  
ANNUAL CHANGE 0° 0' E

①  
At R-024 SVB proceed on 239° to intercept LOC (ISEN)

(IAF) **LEMON**  
R-120 / 12.7D BKK  
R-023 / 8.5D SVB  
8.4D ISEN

②  
Non-RADAR procedure:  
Aircraft will be cleared to BKK VOR then transition to (IAF) LEMON to carry out the ILS approach.

SCALE 1: 500 000

0 5 10 KM  
1 0 1 2 3 4 5 NM

**MISSED APPROACH:**  
Climb straight ahead to intercept and proceed on R-139 SVB VOR to 3000 FT and hold at 8 DME SVB VOR Fix or as directed by ATC.  
(If unable to reach 3000 FT at R-139 / 8D SVB, continue climb in the holding pattern.)

**VOR/DME SVB**  
LOC/DME ISEN

**MAPt (LOC only)**  
4.0D ISEN

**(IAF) LEMON**  
8.5D SVB  
8.4D ISEN

TA 11000

3000 (2995)  
2000 (1995)

GP 3.0° (5.2%)

139°

481 (476)

590(585)

1300 (1295)

FAF

202°

022°

195°

RDH 50 FT  
ELEV 5 FT  
(THR RWY19L)

NM FM THR RWY19L  
DME FM ISEN

D0.0      0 NM D2.3      5 NM      10 NM

OCA/H		A	B	C	D	ISEN DME	MAPt	5.0	6.0	7.0	8.0	FAF
Straight-in Approach	CAT I	205 (200)				Altitudes	590	920	1240	1550	1870	2000
	CAT II	105 (100)				Speed / Knots		100	120	140	160	180
LOC only		590 (585)				FAF - MAPt 4.4 NM		2 : 38	2 : 12	1 : 53	1 : 39	1 : 28
Circling (OCH AAL)		800 (795)	900 (895)		Rate of descent (ft/min)		530	640	745	850	955	

CHANGE: APP FREQUENCY.