

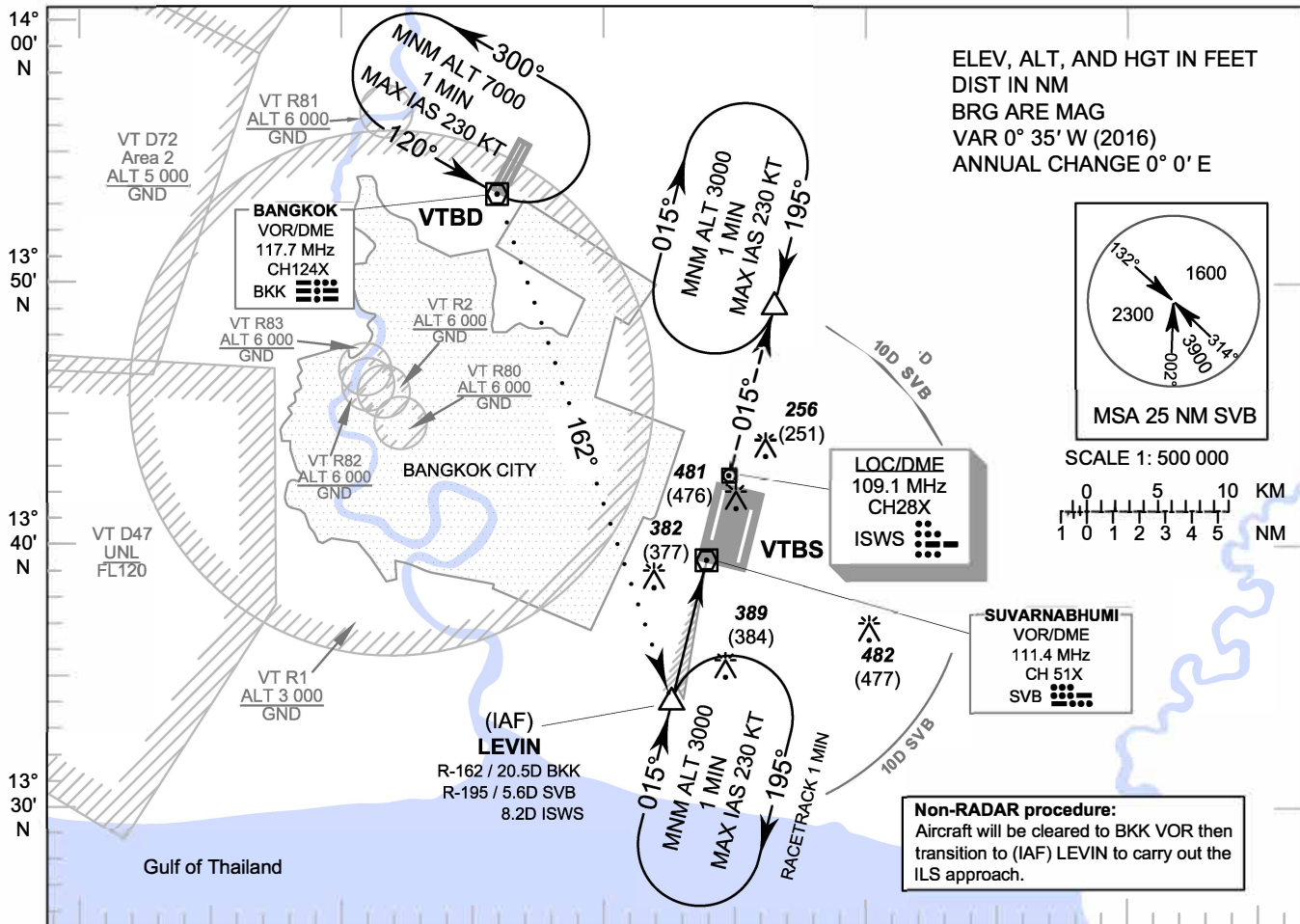
INSTRUMENT APPROACH CHART - ICAO

AERODROME ELEV 5 FT HEIGHTS RELATED TO THR RWY01L - ELEV 5 FT

APP	: 119.1, 262.5
	: 120.3, 262.5
	: 133.4, 262.5
	: 122.35, 262.5
	: 124.35, 262.5
	: 125.2, 262.5
ARR	: 121.1
	: 126.3
TWR	: 118.2, 274.5
	: 119.0
ARR ATIS	: 133.6, 278.6

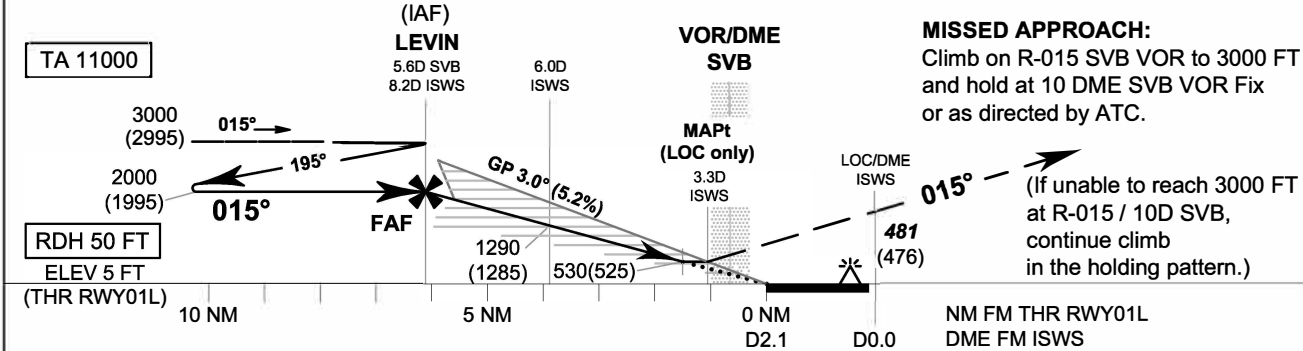
BANGKOK / Suvarnabhumi Intl (VTBS)

ILS or LOC y RWY01L CAT II



Non-RADAR procedure:
Aircraft will be cleared to BKK VOR then transition to (IAF) LEVIN to carry out the ILS approach.

100° 20' E 100° 30' E 100° 40' E 100° 50' E 101° 00' E



OCA/H	A	B	C	D	ISWS DME	FAF	8.0	7.0	6.0	5.0	4.0	MAPt	
Straight-in Approach	CAT I	230 (225)*				Altitudes	2000	1920	1610	1290	970	650	530
	CAT II	105 (100)**				Speed / Knots		100	120	140	160	180	
LOC only	530 (525)				FAF-MAPt 4.9 NM		2 : 56	2 : 27	2 : 06	1 : 50	1 : 38		
Circling (OCH AAL)	800 (795)	900 (895)			Rate of descent (ft/min)		530	640	745	850	955		

*These procedures require a missed approach climb gradient of 5% (304 FT/NM) until passing ALT 1000 FT. For aircraft which only achieve a 2.5% (152 FT/NM) climb gradient, the CAT I OCA (OCH) is 370 (365) FT
 **These procedures require a missed approach climb gradient of 4% (243 FT/NM) until passing ALT 1000 FT. For aircraft which only achieve a 2.5% (152 FT/NM) climb gradient, the CAT II OCA (OCH) is 295 (290) FT

CHANGE: APP FREQUENCY.