

STANDARD DEPARTURE CHART - INSTRUMENT (SID) - ICAO

TRANSITION ALTITUDE
11000 FT

SPEED RESTRICTION
MAX IAS 250 KT AT OR BELOW ALT 10000 FT UNLESS OTHERWISE AUTHORIZED BY ATC.

APP : 119.1, 262.5
: 120.3, 262.5
: 133.4, 262.5
: 122.35, 262.5
: 124.35, 262.5
: 125.2, 262.5

ARR : 121.1
: 126.3

TWR : 118.2, 274.5
: 119.0

DEP ATIS : 127.65

**BANGKOK/Suvarnabhumi Intl (VTBS)
RNAV RWY01R**

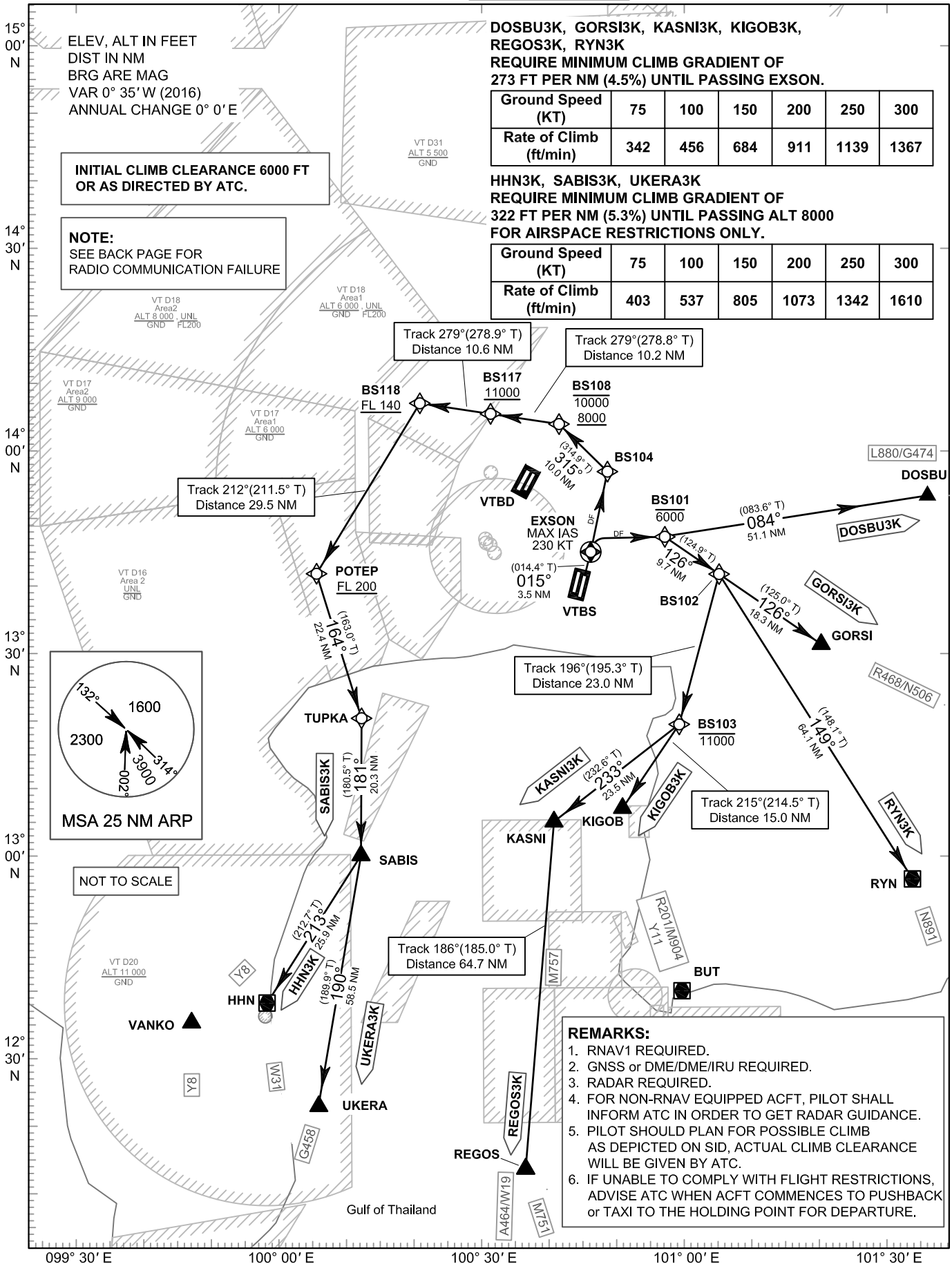
DOSBU3K GORSI3K HHN3K
KASNI3K KIGOB3K REGOS3K
RYN3K SABIS3K UKERA3K

**DOSBU3K, GORSI3K, KASNI3K, KIGOB3K, REGOS3K, RYN3K
REQUIRE MINIMUM CLIMB GRADIENT OF 273 FT PER NM (4.5%) UNTIL PASSING EXSON.**

| Ground Speed (KT) | 75 | 100 | 150 | 200 | 250 | 300 |
|------------------------|-----|-----|-----|-----|------|------|
| Rate of Climb (ft/min) | 342 | 456 | 684 | 911 | 1139 | 1367 |

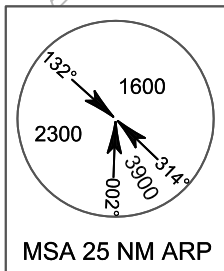
**HHN3K, SABIS3K, UKERA3K
REQUIRE MINIMUM CLIMB GRADIENT OF 322 FT PER NM (5.3%) UNTIL PASSING ALT 8000 FOR AIRSPACE RESTRICTIONS ONLY.**

| Ground Speed (KT) | 75 | 100 | 150 | 200 | 250 | 300 |
|------------------------|-----|-----|-----|------|------|------|
| Rate of Climb (ft/min) | 403 | 537 | 805 | 1073 | 1342 | 1610 |



INITIAL CLIMB CLEARANCE 6000 FT OR AS DIRECTED BY ATC.

NOTE:
SEE BACK PAGE FOR RADIO COMMUNICATION FAILURE



REMARKS:

1. RNAV1 REQUIRED.
2. GNSS or DME/DME/IRU REQUIRED.
3. RADAR REQUIRED.
4. FOR NON-RNAV EQUIPPED ACFT, PILOT SHALL INFORM ATC IN ORDER TO GET RADAR GUIDANCE.
5. PILOT SHOULD PLAN FOR POSSIBLE CLIMB AS DEPICTED ON SID, ACTUAL CLIMB CLEARANCE WILL BE GIVEN BY ATC.
6. IF UNABLE TO COMPLY WITH FLIGHT RESTRICTIONS, ADVISE ATC WHEN ACFT COMMENCES TO PUSHBACK or TAXI TO THE HOLDING POINT FOR DEPARTURE.

CHANGE: APP FREQUENCY.