

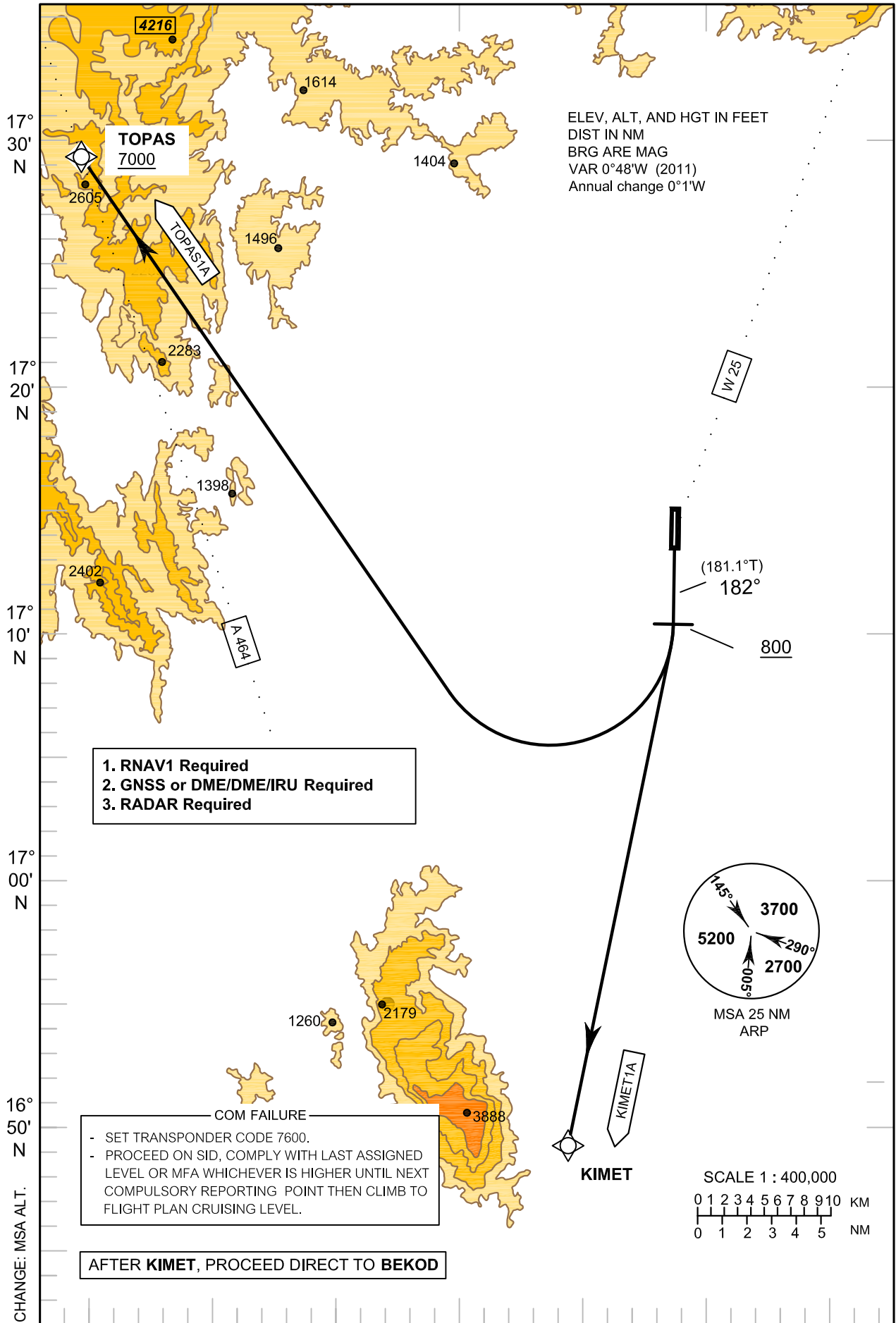
**STANDARD DEPARTURE CHART -  
INSTRUMENT (SID) - ICAO**

TRANSITION ALTITUDE  
11000 FT

APP : 120.7  
TWR : 122.9

**SUKHOTHAI/Sukhothai (VTPO)  
RNAV RWY18**

KIMET1A TOPAS1A



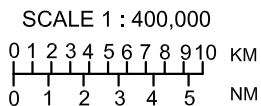
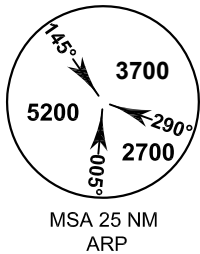
ELEV, ALT, AND HGT IN FEET  
DIST IN NM  
BRG ARE MAG  
VAR 0°48'W (2011)  
Annual change 0°1'W

1. RNAV1 Required
2. GNSS or DME/DME/IRU Required
3. RADAR Required

COM FAILURE

- SET TRANSPONDER CODE 7600.
- PROCEED ON SID, COMPLY WITH LAST ASSIGNED LEVEL OR MFA WHICHEVER IS HIGHER UNTIL NEXT COMPULSORY REPORTING POINT THEN CLIMB TO FLIGHT PLAN CRUISING LEVEL.

**AFTER KIMET, PROCEED DIRECT TO BEKOD**



17° 30' N  
17° 20' N  
17° 10' N  
17° 00' N  
16° 50' N  
CHANGE: MSA ALT.

099° 30' E                      099° 40' E                      099° 50' E