

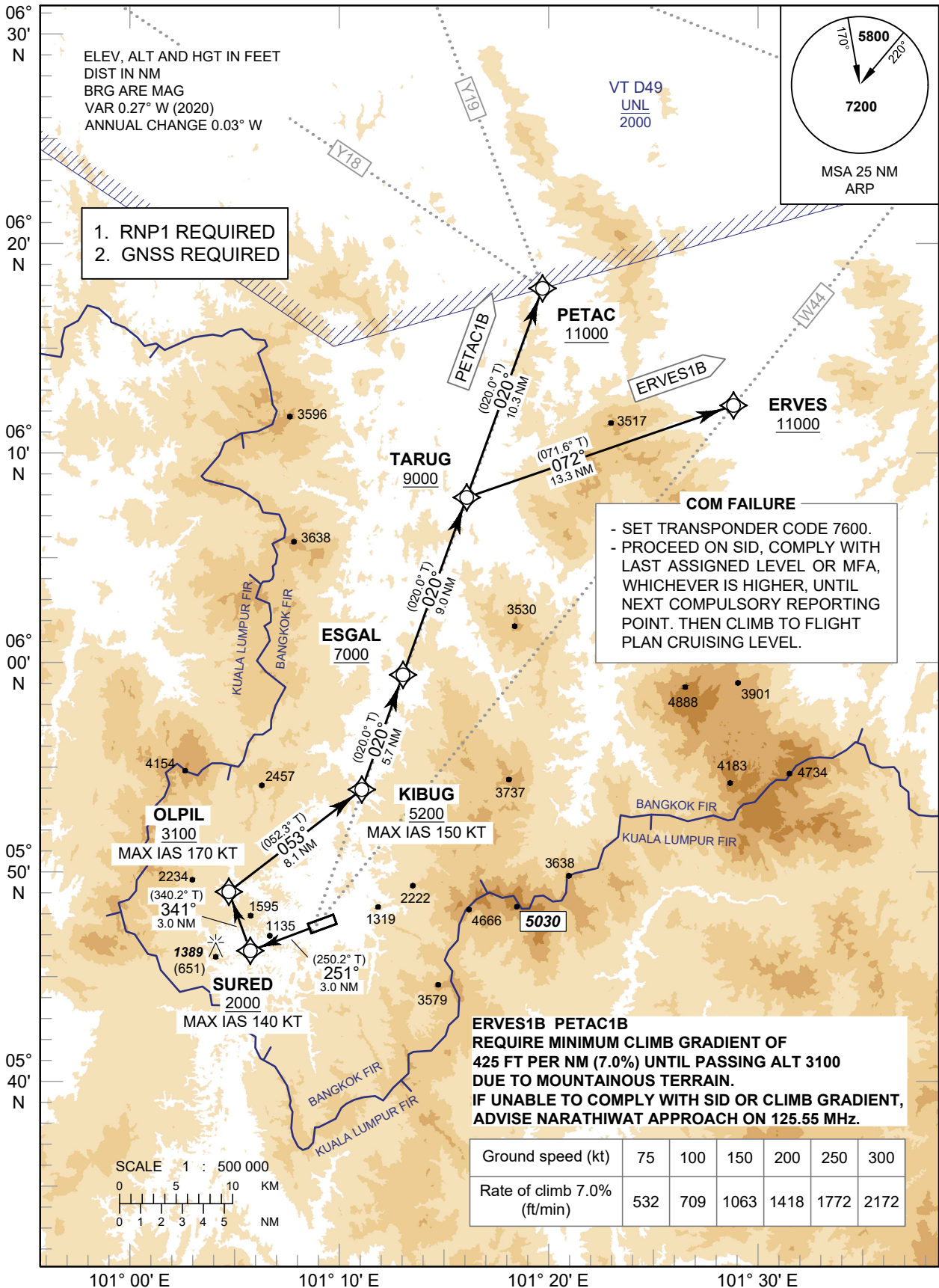
**STANDARD DEPARTURE CHART
INSTRUMENT (SID) - ICAO**

TRANSITION ALTITUDE
11000

APP : 125.55
TWR : 124.15, 236.6
GND : 122.15
ATIS : 128.50

**YALA / Betong (VTSY)
RNAV RWY25**

ERVES1B PETAC1B



CHANGE: OBSTACLE AND SPOT HEIGHT ADDED.