

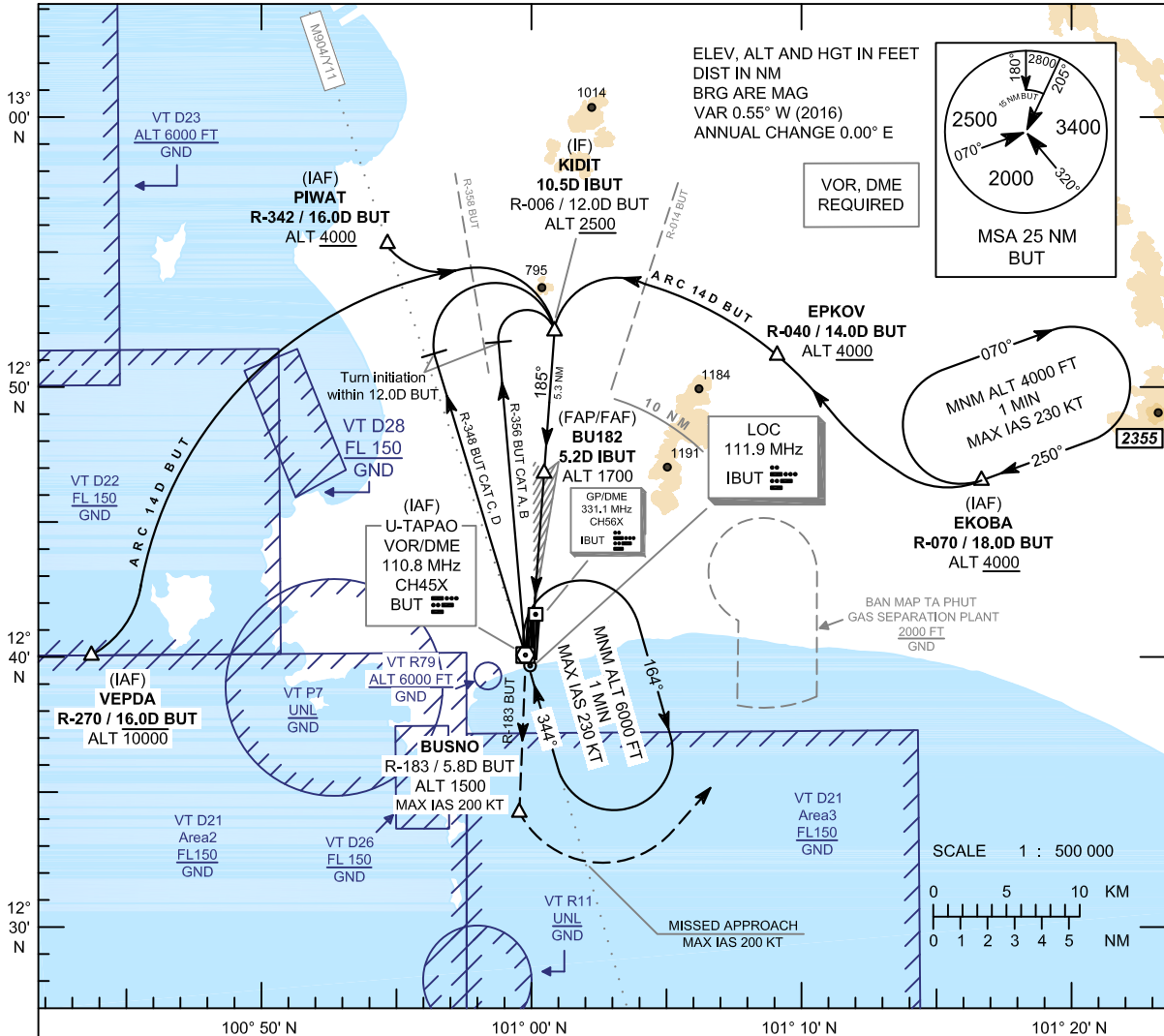
**INSTRUMENT
APPROACH
CHART - ICAO**

AERODROME ELEV 59 FT
HEIGHTS RELATED TO
THR RWY18 - ELEV 59 FT

APP : 119.7 , 134.5
238.3 , 273.3
TWR : 118.3 , 227.0
GND : 121.9 , 275.8
ATIS : 127.2

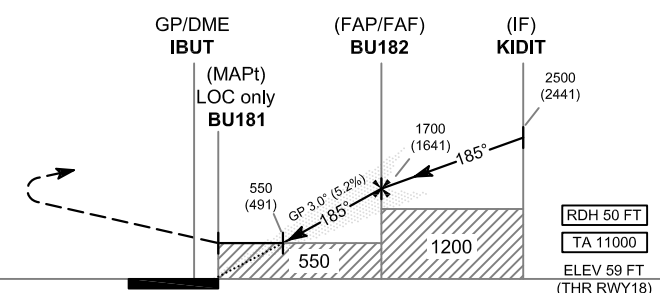
**RAYONG / U-TAPAO RAYONG
PATTAYA INTL (VTBU)**

ILS or LOC y RWY18



CAUTION : Aircraft shall avoid entering VT R11

MISSED APPROACH :
No turn before MAPt (for LOC only).
Speed restricted to **MAX IAS 200 KT until after turn.**
climb to intercept outbound R-183 BUT
VOR to BUSNO at or above 1500 FT.
After BUSNO turn left to intercept outbound
R-070 BUT VOR, then proceed to EKOBA at ALT
4000FT or above and hold or as directed by ATC.



DME FM GP/DME	0	0.2	1.6	5.2	10.5
NM FM THR	0	0.2	1.4	5.0	10.3

CHANGE: NEW CHART.

OCA/H	A	B	C	D	GS OUT	Distance (IBUT)	1.6 D	2 D	3 D	4 D	5 D	FAF
Straight-in Approach CAT I	300 (241)					Altitude (Height)	550 (491)	680 (621)	995 (936)	1310 (1251)	1625 (1566)	1700 (1641)
LOC only	550 (491)				Ground speed	knot	70	90	100	120	140	160
Circling (OCH AAL)	1200 (1141)	1450 (1391)			Rate of descent (5.2%)	ft/min	369	474	527	632	737	843